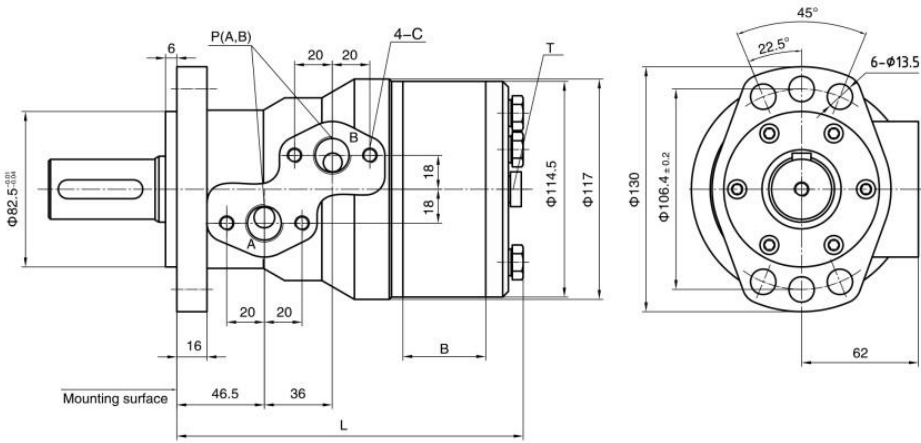


■ BMH Installation

6-hole oval flange AIV



TYPE	BMH-200	BMH-250	BMH-315	BMH-400	BMH-500
L	168	175	184	196	205
B	28	35	44	56	65

■ BMH PORTS CODE

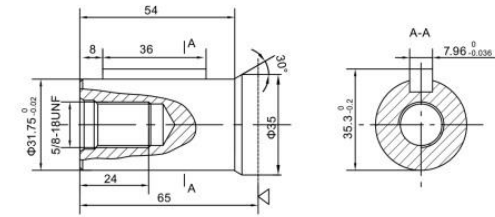
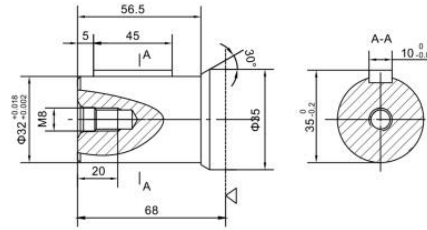
Code	Ports	P(A, B)(deep)	C (deep)	T (deep)
Y		G1/2 (15)	M8 (13)	G1/4 (12)
Y5		7/8-14UNF (15)	3/8-16UNC (13)	7/16-20UNF (12)
Y8		NPT1/2 (15)	5/16-18UNC (13)	7/16-20UNF (12)
Y25		7/8-14UNF (15)	M8 (13)	7/16-20UNF (12)

Note:P(A, B)--Ports, C--Mounting Thread (—Indicates no this thread) , T--Drain connettion

■ BMH SHAFT VERSION

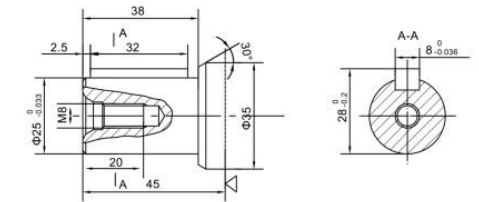
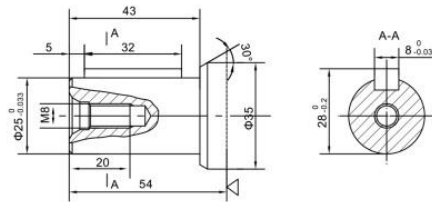
P1: Ø32Cylindrical shaft, parallel key10 × 8 × 45

P2: Ø31.75Cylindrical shaft, parallel key7.96 × 7.96 × 36



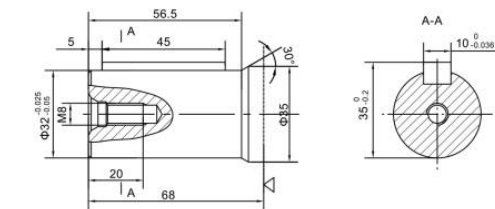
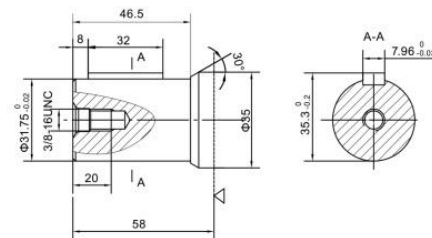
P3: Ø25Cylindrical shaft, parallel key8 × 7 × 32

P4: Ø25Cylindrical shaft, parallel key8 × 7 × 32



P5: Ø31.75 Cylindrical shaft, parallel key7.96 × 7.96 × 32

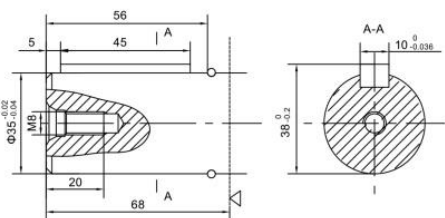
P6: Ø32 Cylindrical shaft, parallel key10 × 8 × 45



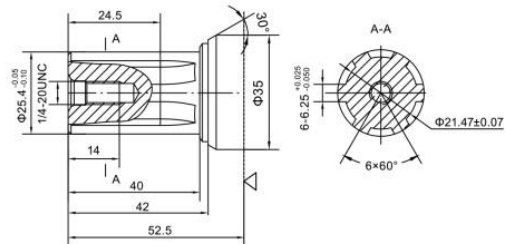
◁ : Motor mounting surface

■ BMH SHAFT VERSION

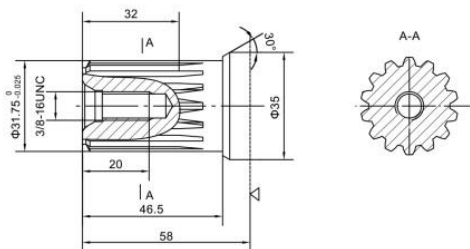
P7: $\Phi 35$ Cylindrical shaft, parallel key $10 \times 8 \times 45$



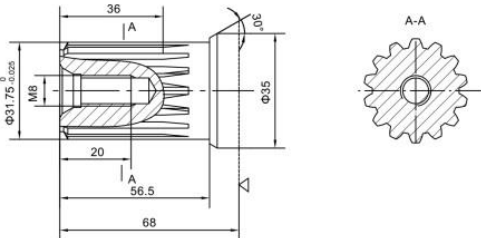
H3: $\Phi 25.4$ Splined shaft, 6-25.4 \times 21.47 \times 6.25



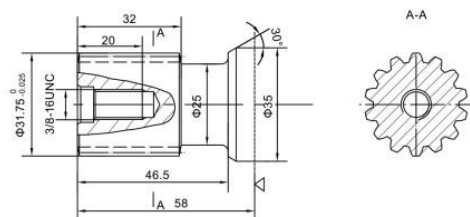
K1: $\Phi 31.75$ involute splined shaft 14-DP12/24 $a=30^\circ$



K2: $\Phi 31.75$ involute splined shaft 14-DP12/24 $a=30^\circ$



K11: $\Phi 31.75$ involute splined shaft 14-DP12/24 $a=30^\circ$



◁ : Motor mounting surface

■ BMH Series Motor

Direction of shaft rotation: Standard

When facing shaft end of motor, shaft to rotate:
 Clockwise when port "A" is pressurized.
 Counter-clockwise port "B" is pressurized.

