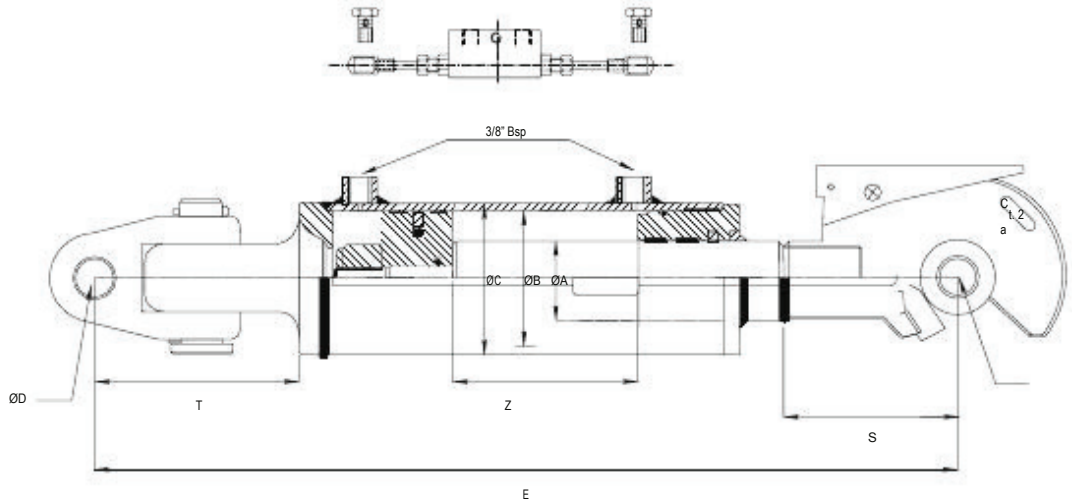


SERIES 620 - HYDRAULIC TOP LINK (RAPID HOOK)



Working pressure: 180 bars.
 Speed: 0.5 m/s.
 Working temperature: -25°C - +80°C.
 Oil: Mineral oil.
 Rod: C45 f7 25 microns.
 Tube: St52.3 Din2393 Iso H9

Option : Dual pilot operated check valve set. (VADP008EX).
 Ball joints welded.

ORDER CODE	ØA	Z STROKE	E	B	C	ØD	S	RANGE	T	VOL	WEIGHT
620/020		200	550		70					0.55	12.5
620/025	35	250	600	60		19.40				0.7	13.5
621/020		200	550	70	80	20.40	105	Cat.2		0.95	14
621/025		250	600			22.40			95	1.15	15.5
622/020		200	600	80	95	25.40				1.1	18
622/025	40	250	650			28.40				1.35	20
623/020		200	600	90	105	30.40	132	Cat.3		1.3	19.5
623/025		250	650			30.40				1.65	22
624/020		200	600	100	115	32.40				1.55	22.5
624/025	45	250	650							1.9	25.5