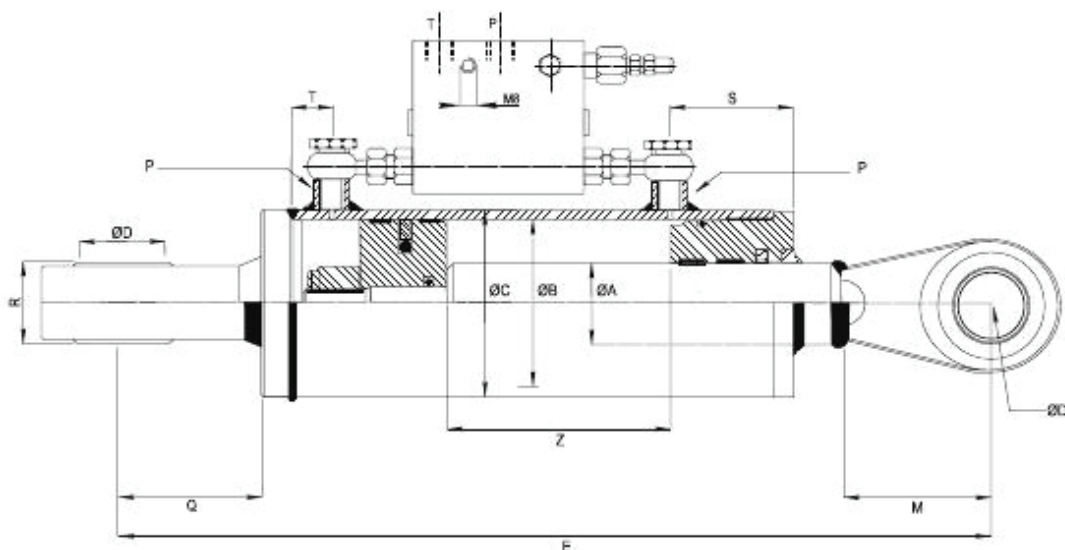


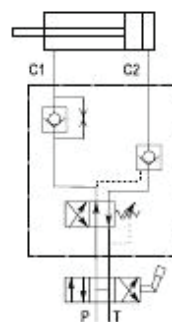
SERIES 590 - TURN-OVER PLOUGH CYLINDER



Hydraulic valve diagram

Operation: Can be mounted on a circuit of single and double acting. It is equipped with TAC and TPN ball joints for easier mounting.

Reference of the turn-over plough valve: VSEB03802. (Mounting in pipe Din2353).



ORDER CODE	ØA	Z STROKE	E	B	C	D	Q	M	S	R	P	T	VOL	WEIGHT
591/016	30		50	60		51	51	43	28	3/8"	20	0.3	8.5	
592/016	40		70	80		51	51	51	28	3/8"	26	0.6	11.8	
593/016	40		80	90		51	51	56	28	3/8"	26	0.85	13.2	