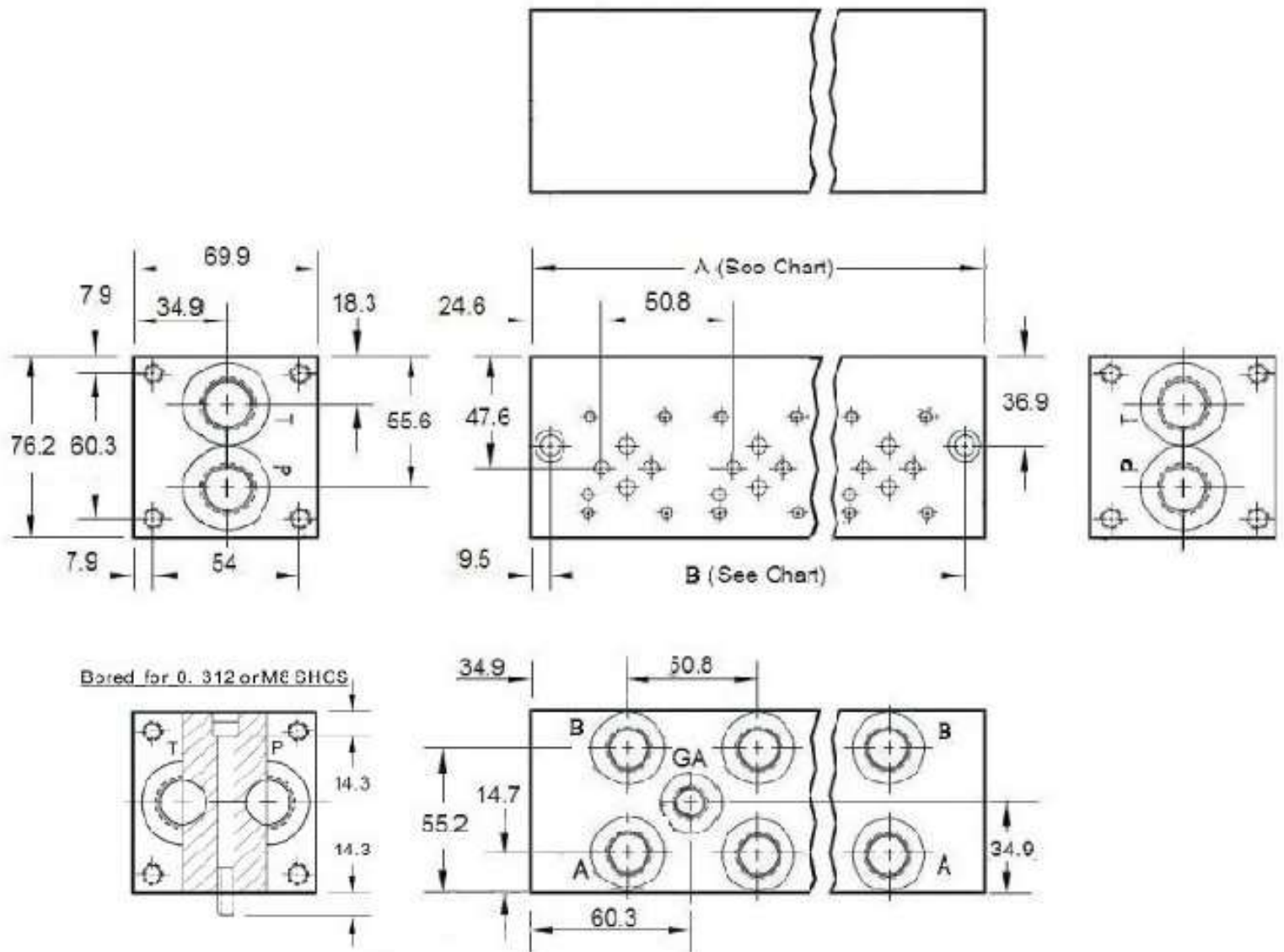
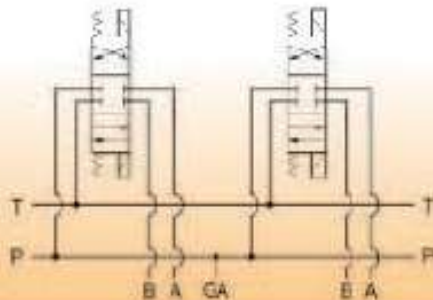


FLOWFIT CETOP 3 NG6 STEEL PARALLEL CIRCUIT MANIFOLD



Parallel Circuit



WEIGHT/ DIMENSIONS	NUMBER OF STATIONS									
	1	2	3	4	5	6	7	8	9	10
WEIGHT (KGS)	2.57	4.45	6.33	8.21	10.09	11.97	13.85	15.73	17.61	19.49
LENGTH 'A' (MM)	69.9	120.7	171.5	222.3	273.1	323.9	374.7	425.5	476.3	527.1
LENGTH 'B' (MM)	50.8	101.6	152.4	203.2	254	304.8	355.6	406.4	457.2	508

NOTE: GAUGE PORT IS NOT AVAILABLE ON 1 STATION MANIFOLD