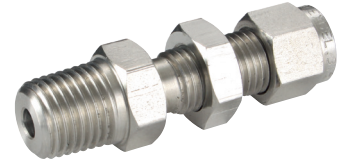
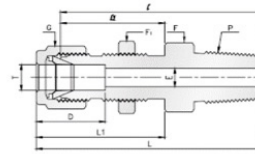


316 Stainless Steel Twin Ferrule Metric Tube Fittings



Bulkhead Male Connectors

Male Thread, NPT



PART NO	T mm	P (NPT)	E mm	F	F2	G	D	C	I1	L	L1	Panel Hole Drill Size	Max Panel Thickness
BMC-6-125N	6	1/8	2.28	14	17	14	17	42	26.0	51.0	35	11.60	12
BMC-6-250N	6	1/4	4.82	14	17	14	17	47	26.0	56.0	35	11.60	12
BMC-10-250N	10	1/4	7.11	17	19	19	18	52	29.50	60.50	38	16.40	10
BMC-12-250N	12	1/4	10.40	22	24	22	24	60	32.0	71.0	43	19.50	14