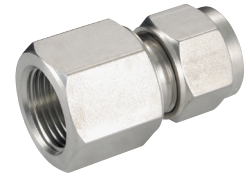
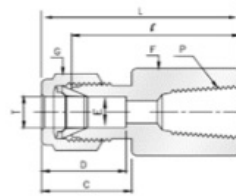


316 Stainless Steel Twin Ferrule Metric Tube Fittings



Female Connectors

Female Thread, NPT



PART NO	T mm	P (NPT)	E mm	F	G	D	C	I	L
FC-3-125N	3	1/8	2.4	14	12	12.9	15.3	22.1	28.7
FC-3-250N	3	1/4	2.4	19	12	12.9	15.3	26.9	33.5
FC-4-125N	4	1/8	2.4	14	12	13.7	16.1	23.1	29.7
FC-6-125N	6	1/8	4.8	14	14	15.3	17.7	23.9	31.3
FC-6-250N	6	1/4	4.8	19	14	15.3	17.7	28.4	35.8
FC-6-375N	6	3/8	4.8	22	14	15.3	17.7	29.5	36.9
FC-6-500N	6	1/2	4.8	27	14	15.3	17.7	35.1	42.5
FC-8-125N	8	1/8	6.4	15	16	16.2	18.6	24.6	32.1
FC-8-250N	8	1/4	6.4	19	16	16.2	18.6	29.5	37.0
FC-8-375N	8	3/8	6.4	22	16	16.2	18.6	30.2	37.7
FC-8-500N	8	1/2	6.4	27	16	16.2	19.5	35.8	43.3
FC-10-250N	10	1/4	7.9	19	19	17.2	19.5	30.2	37.8
FC-10-375N	10	3/8	7.9	22	19	17.2	19.5	31.0	38.6
FC-10-500N	10	1/2	7.9	27	19	17.2	22.0	36.6	44.2
FC-12-250N	12	1/4	9.5	22	22	22.8	22.0	30.2	40.3
FC-12-375N	12	3/8	9.5	22	22	22.8	22.0	31.0	41.1
FC-12-500N	12	1/2	9.5	27	22	22.8	22.0	36.6	46.7
FC-15-500N	15	1/2	11.9	27	25	24.4	22.0	36.6	46.7
FC-16-500N	16	1/2	12.7	27	25	24.4	22.0	36.8	46.9
FC-20-500N	20	1/2	15.9	30	32	26.0	22.0	37.8	47.9
FC-20-750N	20	3/4	15.9	35	32	26.0	22.0	39.6	49.7
FC-22-750N	22	3/4	18.3	35	32	26.0	22.0	39.6	49.7
FC-22-1000N	22	1	18.3	41	32	26.0	22.0	47.8	57.9
FC-25-750N	25	3/4	21.8	35	38	31.3	26.5	41.1	53.4
FC-25-1000N	25	1	21.8	41	38	31.3	26.5	50.0	62.3