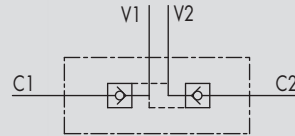
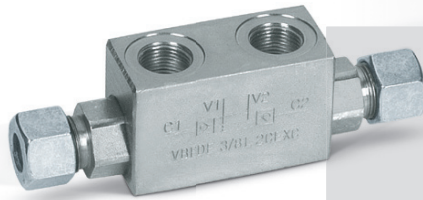


## 1.2 - VALVOLE DI BLOCCO PILOTATE DOPPIO EFFETTO CON 2 CARTUCCE EXTRACORTE DIN 2353

## 1.2 - DOUBLE PILOT OPERATED CHECK VALVES FOR 12 mm PIPE MOUNTING (DIN 2353)

TIPO / TYPE  
VBPDE 2 CEXC

SCHEMA IDRAULICO  
HYDRAULIC DIAGRAM



### IMPIEGO:

Valvola utilizzata per bloccare in posizione un cilindro in entrambi i sensi, consentendo il flusso in una direzione ed impedendolo in senso contrario fino a quando non viene applicata la pressione di pilotaggio. Questa valvola risulta particolarmente adatta per il montaggio su cilindro. A richiesta si fornisce kit di raccordi a misura per il montaggio a interasse definito.

### MATERIALI E CARATTERISTICHE:

**Corpo:** acciaio zincato.

**Componenti interni:** acciaio temprato termicamente e rettificato

**Guarnizioni:** BUNA N standard

**Tenuta:** a cono guidato. Non ammette trafilamenti

### MONTAGGIO:

Collegare V1 e V2 all'alimentazione e C1 e C2 all'attuatore attraverso appositi raccordi a occhio.

### A RICHIESTA:

- Senza guarnizione OR sul pilota
- Senza dado e ogiva
- Molla 1 Bar
- Molla 8 bar

### PERDITE DI CARICO PRESSURE DROPS CURVE

### USE AND OPERATION

Pilot check valves are used to block the actuator in both directions. Flow is free in one direction and blocked in the reverse direction until pilot pressure is applied. They are easily assembled on a cylinder. We supply on request fittings kit for mounting on cylinders with a specific centre distance.

### MATERIALS AND FEATURES

**Body:** zinc-plated steel

**Internal parts:** hardened and ground steel

**Seals:** BUNA N standard

**Poppet type:** any leakage.

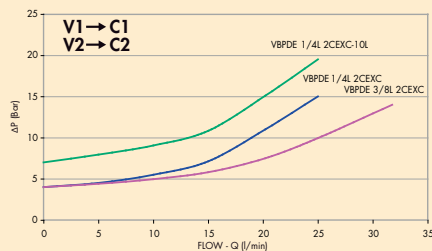
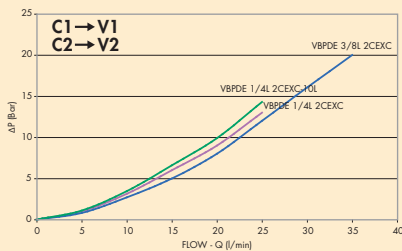
### APPLICATIONS

Connect V1 and V2 to the pressure flow and C1 and C2 to the actuator with the pipe.

### ON REQUEST

- without seal on pilot piston
- without nut and olive
- 1 Bar spring
- 8 Bar spring

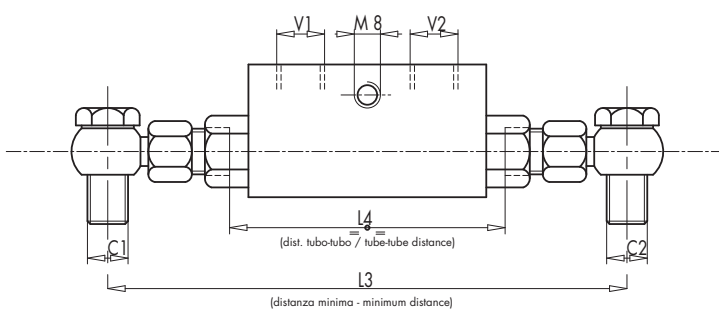
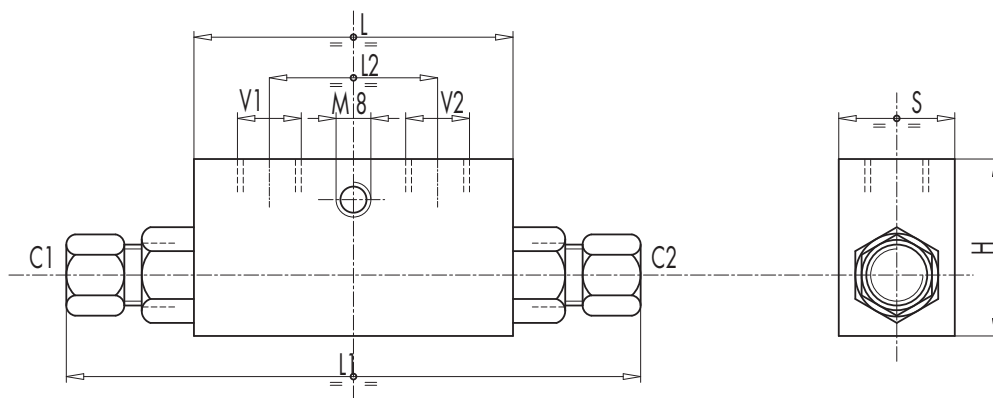
Temperatura olio: 50°C - Viscosità olio: 30 cSt  
Oil temperature: 50°C - Oil viscosity: 30 cSt





1

CODICE CODE	SIGLA TYPE	RAPP.PILOT. PILOT RATIO	PORTATA MAX MAX FLOW Lt./min	PRESSIONE MAX MAX PRESSURE Bar	PRESSIONE APERTURA CRACKING PRESSURE Bar
<b>V0090</b>	VBPDE 1/4" L 2 CEXC	1:5,5	20	350	4
<b>V0110</b>	VBPDE 3/8" L 2 CEXC	1:5,5	30	350	4
<b>V0091</b>	VBPDE 1/4" L 2 CEXC - 10L	1:5,5	20	350	7



CODICE CODE	SIGLA TYPE	V1-V2	C1-C2	L	L1	L2	L3	L4	H	S	PESO WEIGHT
		GAS	mm	mm	mm	mm	mm	mm	mm	mm	Kg
<b>V0090</b>	VBPDE 1/4" L 2 CEXC	G 1/4"	12L	64	134	36	160	84	40	30	0,648
<b>V0110</b>	VBPDE 3/8" L 2 CEXC	G 3/8"	12L	64	134	36	166	84	40	30	0,630
<b>V0091</b>	VBPDE 1/4" L 2 CEXC - 10L	G 1/4"	10L	64	125	36	160	82	40	30	0,644