

*COSÌ...
like this...
so...*

*...O COSÌ
...or like this
... oder so*



COLLETTORI

La soluzione ordinata

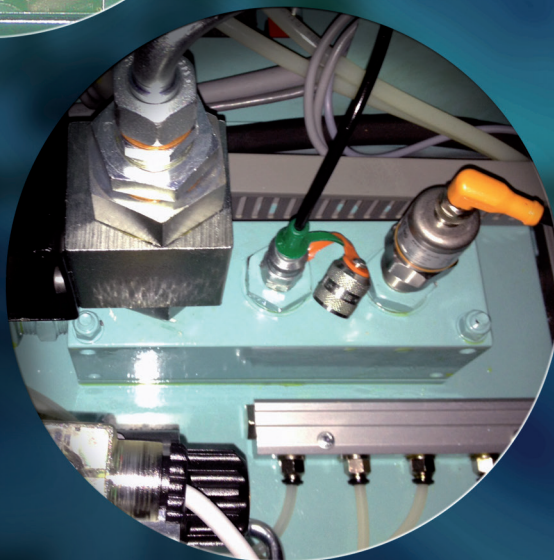
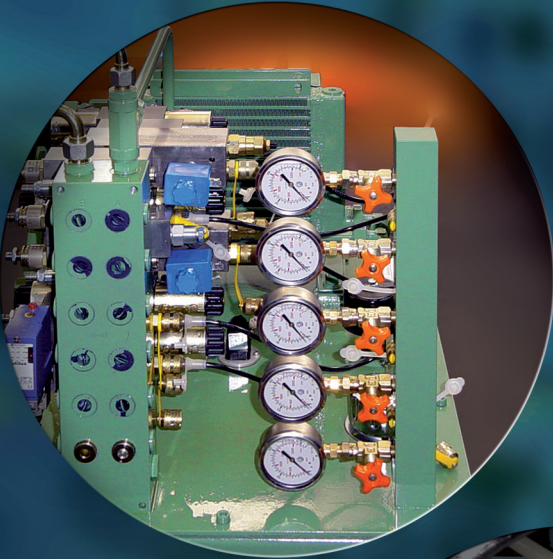
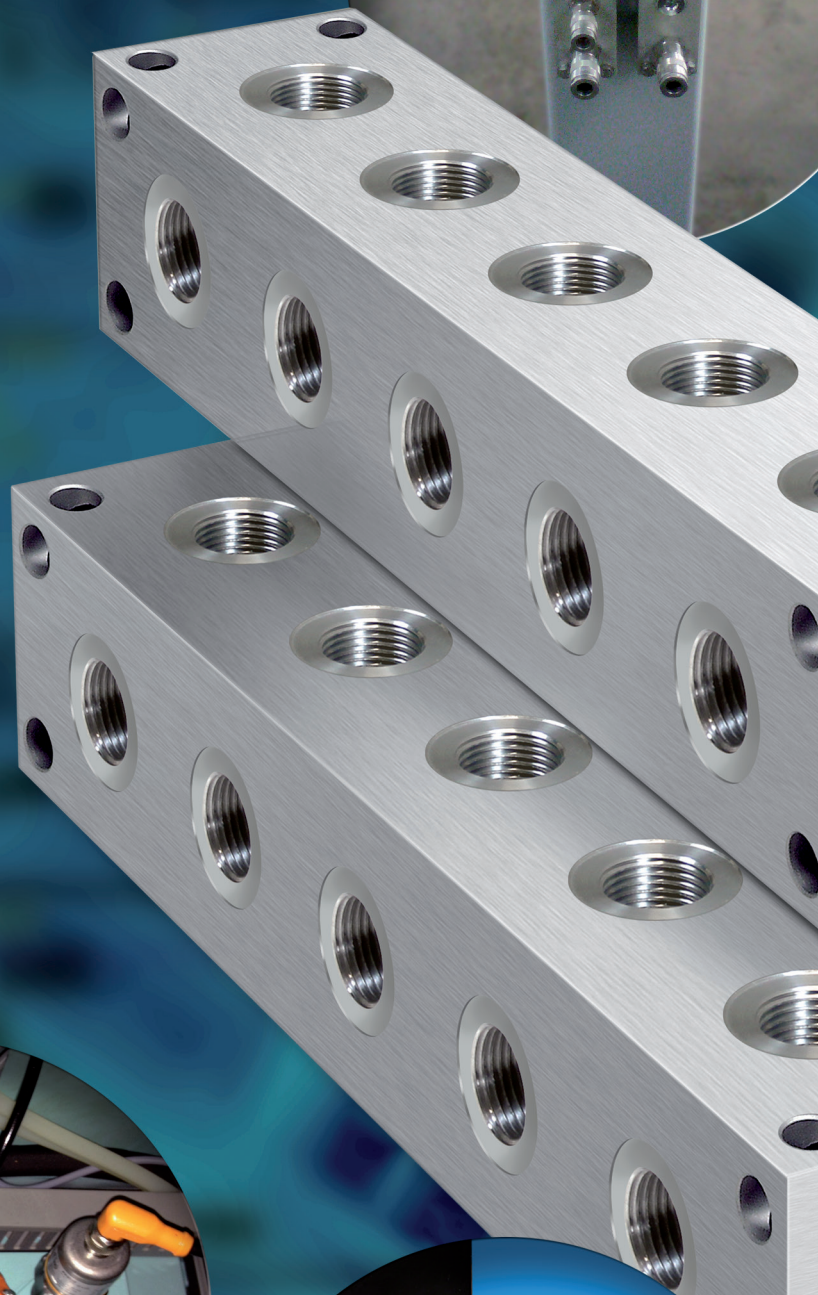
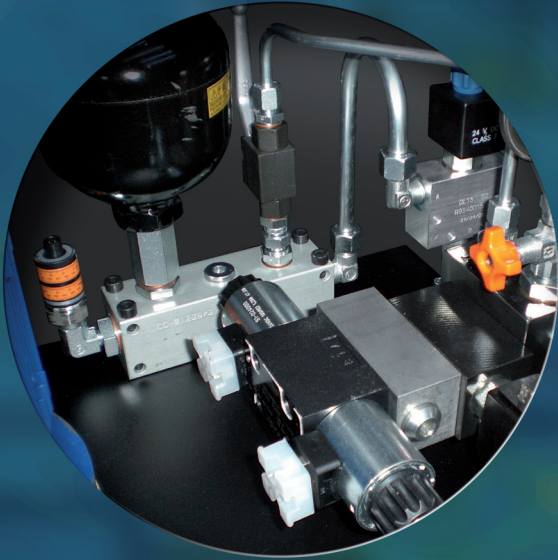
MANIFOLDS

The orderly solution

VERTEILERBLÖCKE

Die ordentliche Lösung





Durante il progetto e la successiva realizzazione degli impianti oleodinamici è sempre più sentita, da parte dei Tecnici progettisti ed installatori, la necessità di utilizzare dei componenti che permettano di razionalizzare i percorsi delle linee di portata in pressione e sui ritorni. Per andare incontro a questa esigenza OLEO-RAMA ha sviluppato e realizzato una gamma di collettori standard in diverse tipologie di schema e di dimensione. In particolare:

- tre tipi di schema : Schema parallelo - codice CMA01 / Schema "L" indipendente - codice CMA02 / Schema "T" indipendente - codice CMA03
- sei taglie di connessione : da 1/8" a 1" Gas
- numero di stazioni : variabile da 2 fino a 9

L'utilizzo dei collettori OLEO-RAMA porta dei sicuri vantaggi in termini di pulizia impianto, migliore efficienza del circuito con perdite di carico più contenute rispetto ai componenti tradizionali e risparmio di tempo per l'esecuzione del cablaggio. Completa il servizio OLEO-RAMA la disponibilità a magazzino di tutte le tipologie di collettori presenti a catalogo.

During the design and subsequent construction of hydraulic systems, design engineers and installers increasingly feel the need to use components enabling the paths of the pressure and return lines to be rationalized. To meet this need OLEO-RAMA has developed and produces a range of standard manifolds in different types of configurations and sizes.

In particular:

- *three types of configuration: parallel - code CMA01 / with independent "Ls" - code CMA02 / with independent "Ts" - code CMA03*
- *six connector sizes : from 1/8" a 1" Gas*
- *number of stations : ranging from 2 to a maximum of 9*

Using OLEO-RAMA manifolds brings undoubted advantages in terms of system cleanliness, improved circuit efficiency with fewer pressure drops compared to traditional components, and time savings in wiring operations. The OLEO-RAMA service is completed by an available stock of all types of manifolds featured in the catalogue.

Während der Planung und darauffolgenden Realisierung der öldynamischen Anlagen, besteht von Seiten der Planungstechniker und Installateure immer stärker die Notwendigkeit der Verwendung von Komponenten, die die Rationalisierung des Verlaufs der unter Druck stehenden Zufluss-Leitungen und der Rückflüsse ermöglichen. Um diesem Bedürfnis entgegenzukommen, hat OLEO-RAMA eine Reihe von Standard-Verteilerblöcken in verschiedenen Schema-Typen und Maßen entwickelt und produziert.

Im Besonderen:

- *drei Schematypen : Parallel-Schema – Code CMA01 / Schema unabhängiges "L"- – Code CMA02 / Schema unabhängiges "T"- – Code CMA03*
- *sechs Anschlussgrößen : von 1/8" bis 1" GAS*
- *Anzahl Stationen : variabel von 2 bis 9*

Die Verwendung der Verteilerblöcke OLEO-RAMA bringt sichere Vorteile im Hinblick auf: Sauberkeit der Anlage, bessere Effizienz der Kreislaufe, mit, gegenüber herkömmlichen Komponenten, begrenzterem Verlust an hydraulischem Potential, Zeitersparnis bei der Verkabelung. Die Leistungen OLEO-RAMA werden durch die Lagerverfügbarkeit aller im Katalog aufgeführten Verteilertypen vervollständigt.





COMPANY WITH
QUALITY SYSTEM
CERTIFIED BY DNV GL
= ISO 9001 =

COLLETORE OLIO
OIL MANIFOLD
ÖLVERTEILERBLOCK

CODICE/CODE/COE

CMA0135-AZ-0 **-OL**

N° STAZIONI
NO. OF STATIONS
ANZAHL STATIONEN

- * **A**- alluminio (standard)
- S**- acciaio (su richiesta)
- X**- acciaio inox (su richiesta)
- * **A**- aluminium (standard)
- S**- steel (on request)
- X**- stainless steel (on request)
- * **A**- aluminium (standard)
- S**- stahl (auf Anfrage)
- X**- edelstahl (auf Anfrage)

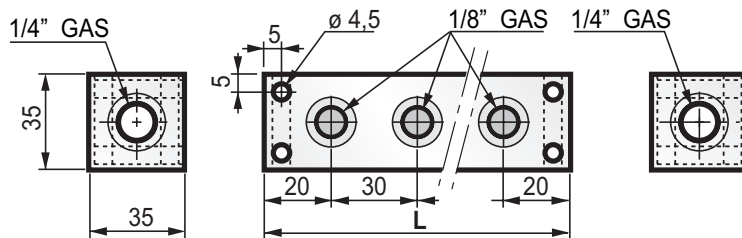
N° (N° STAZIONI) (No. OF STATIONS) (ANZAHL STATIONEN)	L	PESO WEIGHT GEWICHT kg
2	70	0,2
3	100	0,29
4	130	0,38
5	160	0,47
-	-	-
-	-	-
-	-	-
-	-	-

COLLETORE SCHEMA PARALLELO
PARALLEL SCHEME MANIFOLD
VERTEILERBLOCK MIT PARALLELSCHEMA



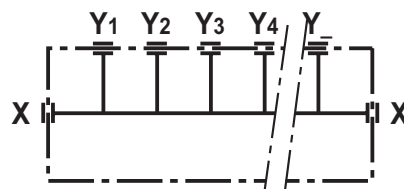
FOTO/PICTURE/FOTO

CMA0135-AZ-05-OL



MASSIMA PRESSIONE DI LAVORO: 250 BAR (LEGA DI ALUMINIO)
MAXIMUM OPERATING PRESSURE: 250 BAR (ALUMINIUM ALLOY)
MAXIMALER BETRIEBSDRUCK: 250 BAR (ALUMINIUMLEGIERUNG)
TRATTAMENTO SUPERFICIALE ALLUMINIO: ANODIZZAZIONE NEUTRA SATINATA
ALUMINIUM SURFACE TREATMENT: NEUTRAL SATIN ANODIZING
OBERFLÄCHENBEHANDLUNG ALUMINIUM : NEUTRAL SATIN ANODISIERUNG

SCHEMA - DIAGRAM - SCHEMA



via S. Quirico, 201/H
50013 Campi Bisenzio - FI
www.oleorama.it
oleorama@oleorama.it
export@oleorama.it



COMPANY WITH
QUALITY SYSTEM
CERTIFIED BY DNV GL
= ISO 9001 =

COLLETTORE OLIO
OIL MANIFOLD
ÖLVERTEILERBLOCK

CODICE/CODE/COE

CMA0140-BA-0 **-OL**

N° STAZIONI
NO. OF STATIONS
ANZAHL STATIONEN

- * **A**- alluminio (standard)
- S**- acciaio (su richiesta)
- X**- acciaio inox (su richiesta)
- * **A**- aluminium (standard)
- S**- steel (on request)
- X**- stainless steel (on request)
- * **A**- aluminium (standard)
- S**- stahl (auf Anfrage)
- X**- edelstahl (auf Anfrage)

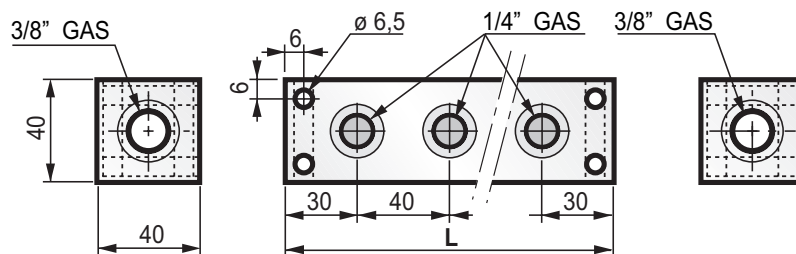
N° (N° STAZIONI) (NO. OF STATIONS) (ANZAHL STATIONEN)	L	PESO WEIGHT GEWICHT kg
2	100	0,36
3	140	0,51
4	180	0,66
5	220	0,81
6	260	0,97
7	300	1,12
-	-	-
-	-	-

COLLETTORE SCHEMA PARALLELO
PARALLEL SCHEME MANIFOLD
VERTEILERBLOCK MIT PARALLELSCHEMA



FOTO/PICTURE/PICTURE

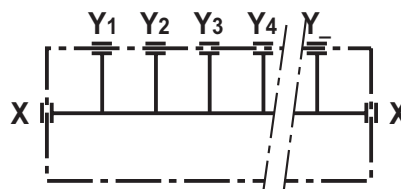
CMA0140-BA-05-OL



MASSIMA PRESSIONE DI LAVORO: 250 BAR (LEGA DI ALUMINIO)
MAXIMUM OPERATING PRESSURE: 250 BAR (ALUMINIUM ALLOY)
MAXIMALER BETRIEBSDRUCK: 250 BAR (ALUMINIUMLEGIERUNG)

TRATTAMENTO SUPERFICIALE ALLUMINIO: ANODIZZAZIONE NEUTRA SATINATA
ALUMINIUM SURFACE TREATMENT: NEUTRAL SATIN ANODIZING
OBERFLÄCHENBEHANDLUNG ALUMINIUM : NEUTRAL SATIN ANODISIERUNG

SCHEMA - DIAGRAM - SCHEMA



via S. Quirico, 201/H
50013 Campi Bisenzio - FI
www.oleorama.it
oleorama@oleorama.it
export@oleorama.it



COMPANY WITH
QUALITY SYSTEM
CERTIFIED BY DNV GL
= ISO 9001 =

COLLETORE OLIO
OIL MANIFOLD
ÖLVERTEILERBLOCK

CODICE/CODE/CODE

CMA0150-CB-0 **-OL**

N° STAZIONI
NO. OF STATIONS
ANZAHL STATIONEN

- * **A**- alluminio (standard)
- S**- acciaio (su richiesta)
- X**- acciaio inox (su richiesta)
- * **A**- aluminium (standard)
- S**- steel (on request)
- X**- stainless steel (on request)
- * **A**- aluminium (standard)
- S**- stahl (auf Anfrage)
- X**- edelstahl (auf Anfrage)

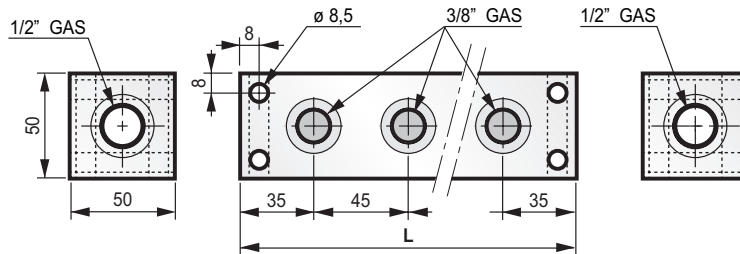
N° (N° STAZIONI) (NO. OF STATIONS) (ANZAHL STATIONEN)	L	PESO WEIGHT GEWICHT kg
2	115	0,63
3	160	0,89
4	205	1,16
5	250	1,42
6	295	1,69
7	340	1,96
8	385	2,22
9	430	2,49

COLLETORE SCHEMA PARALLELO
PARALLEL SCHEME MANIFOLD
VERTEILERBLOCK MIT PARALLELSCHEMA



FOTO/PICTURE/PICTURE

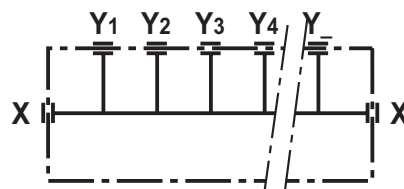
CMA0150-CB-05-OL



MASSIMA PRESSIONE DI LAVORO: 250 BAR (LEGA DI ALUMINIO)
MAXIMUM OPERATING PRESSURE: 250 BAR (ALUMINIUM ALLOY)
MAXIMALER BETRIEBSDRUCK: 250 BAR (ALUMINIUMLEGIERUNG)

TRATTAMENTO SUPERFICIALE ALLUMINIO: ANODIZZAZIONE NEUTRA SATINATA
ALUMINIUM SURFACE TREATMENT: NEUTRAL SATIN ANODIZING
OBERFLÄCHENBEHANDLUNG ALUMINIUM : NEUTRAL SATIN ANODISIERUNG

SCHEMA - DIAGRAM - SCHEMA



via S. Quirico, 201/H
50013 Campi Bisenzio - FI
www.oleorama.it
oleorama@oleorama.it
export@oleorama.it



COMPANY WITH
QUALITY SYSTEM
CERTIFIED BY DNV GL
= ISO 9001 =

COLLETTORE OLIO
OIL MANIFOLD
ÖLVERTEILERBLOCK

CODICE/CODE/COE

CMA0160-DC-0-OL

N° STAZIONI
NO. OF STATIONS
ANZAHL STATIONEN

- * A- alluminio (standard)
- S- acciaio (su richiesta)
- X- acciaio inox (su richiesta)
- * A- aluminium (standard)
- S- steel (on request)
- X- stainless steel (on request)
- * A- aluminium (standard)
- S- stahl (auf Anfrage)
- X- edelstahl (auf Anfrage)

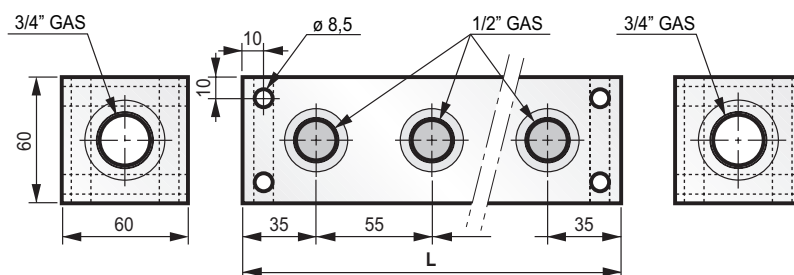
N° (N° STAZIONI) (NO. OF STATIONS) (ANZAHL STATIONEN)	L	PESO WEIGHT GEWICHT kg
2	125	0,97
3	180	1,43
4	235	1,88
5	290	2,34
6	345	2,79
7	400	3,25
8	455	3,7
-	-	-

COLLETTORE SCHEMA PARALLELO
PARALLEL SCHEME MANIFOLD
VERTEILERBLOCK MIT PARALLELSCHEMA



FOTO/PICTURE/PICTURE

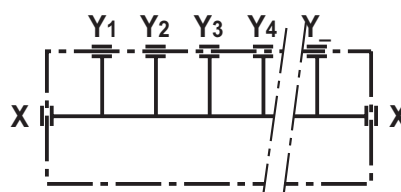
CMA0160-DC-05-OL



MASSIMA PRESSIONE DI LAVORO: 250 BAR (LEGA DI ALUMINIO)
MAXIMUM OPERATING PRESSURE: 250 BAR (ALUMINIUM ALLOY)
MAXIMALER BETRIEBSDRUCK: 250 BAR (ALUMINIUMLEGIERUNG)

TRATTAMENTO SUPERFICIALE ALLUMINIO: ANODIZZAZIONE NEUTRA SATINATA
ALUMINIUM SURFACE TREATMENT: NEUTRAL SATIN ANODIZING
OBERFLÄCHENBEHANDLUNG ALUMINIUM : NEUTRAL SATIN ANODISIERUNG

SCHEMA - DIAGRAM - SCHEMA





COMPANY WITH
QUALITY SYSTEM
CERTIFIED BY DNV GL
= ISO 9001 =

COLLETTORE OLIO
OIL MANIFOLD
ÖLVERTEILERBLOCK

CODICE/CODE/COE

CMA0170-ED-0 **-OL**

N° STAZIONI
NO. OF STATIONS
ANZAHL STATIONEN

- * **A**- alluminio (standard)
- S**- acciaio (su richiesta)
- X**- acciaio inox (su richiesta)
- * **A**- aluminium (standard)
- S**- steel (on request)
- X**- stainless steel (on request)
- * **A**- aluminium (standard)
- S**- stahl (auf Anfrage)
- X**- edelstahl (auf Anfrage)

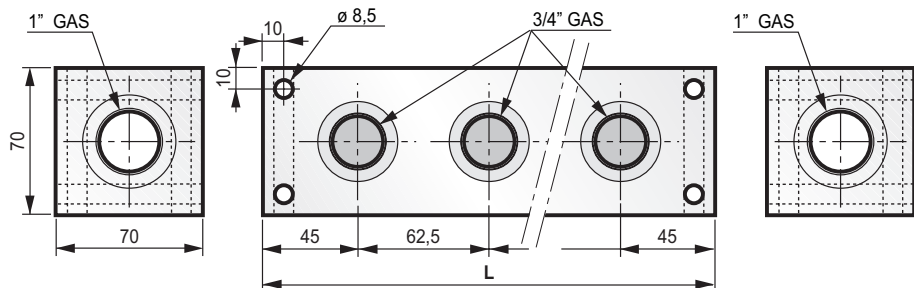
N° (N° STAZIONI) (No. OF STATIONS) (ANZAHL STATIONEN)	L	PESO WEIGHT GEWICHT kg
2	152,5	1,6
3	215	2,28
4	277,5	2,97
5	340	3,65
6	402,5	4,33
7	465	5,02
-	-	-
-	-	-

COLLETTORE SCHEMA PARALLELO
PARALLEL SCHEME MANIFOLD
VERTEILERBLOCK MIT PARALLELSCHEMA



FOTO/PICTURE/PICTURE

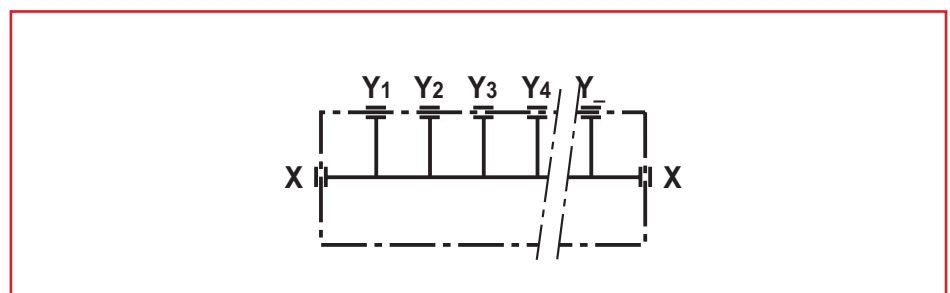
CMA0170-ED-05-OL



MASSIMA PRESSIONE DI LAVORO: 250 BAR (LEGA DI ALUMINIO)
MAXIMUM OPERATING PRESSURE: 250 BAR (ALUMINIUM ALLOY)
MAXIMALER BETRIEBSDRUCK: 250 BAR (ALUMINIUMLEGIERUNG)

TRATTAMENTO SUPERFICIALE ALLUMINIO: ANODIZZAZIONE NEUTRA SATINATA
ALUMINIUM SURFACE TREATMENT: NEUTRAL SATIN ANODIZING
OBERFLÄCHENBEHANDLUNG ALUMINIUM : NEUTRAL SATIN ANODISIERUNG

SCHEMA - DIAGRAM - SCHEMA



via S. Quirico, 201/H
50013 Campi Bisenzio - FI
www.oleorama.it
oleorama@oleorama.it
export@oleorama.it



COMPANY WITH
QUALITY SYSTEM
CERTIFIED BY DNV GL
= ISO 9001 =

COLLETTORE OLIO
OIL MANIFOLD
ÖLVERTEILERBLOCK

CODICE/CODE/CODE

CMA0180-FE-0^{*}-OL

N° STAZIONI
NO. OF STATIONS
ANZAHL STATIONEN

- * A- alluminio (standard)
- S- acciaio (su richiesta)
- X- acciaio inox (su richiesta)
- * A- aluminium (standard)
- S- steel (on request)
- X- stainless steel (on request)
- * A- aluminium (standard)
- S- stahl (auf Anfrage)
- X- edelstahl (auf Anfrage)

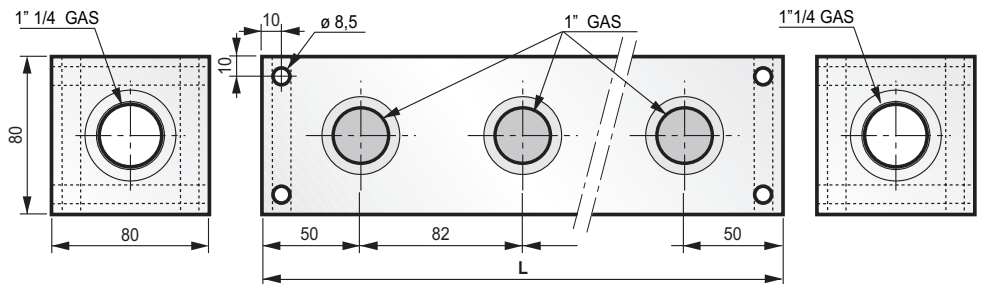
N° (N° STAZIONI) (NO. OF STATIONS) (ANZAHL STATIONEN)	L	PESO WEIGHT GEWICHT kg
2	182	2,4
3	264	3,66
4	346	4,81
5	426	5,96
-	-	-
-	-	-
-	-	-

COLLETTORE SCHEMA PARALLELO
PARALLEL SCHEME MANIFOLD
VERTEILERBLOCK MIT PARALLELSCHEMA



FOTO/PICTURE/PICTURE

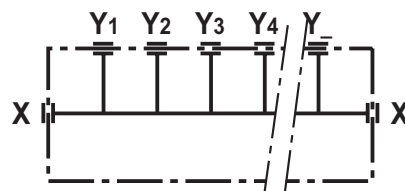
CMA0180-FE-05-OL



MASSIMA PRESSIONE DI LAVORO: 250 BAR (LEGA DI ALUMINIO)
MAXIMUM OPERATING PRESSURE: 250 BAR (ALUMINIUM ALLOY)
MAXIMALER BETRIEBSDRUCK: 250 BAR (ALUMINIUMLEGIERUNG)

TRATTAMENTO SUPERFICIALE ALLUMINIO: ANODIZZAZIONE NEUTRA SATINATA
ALUMINIUM SURFACE TREATMENT: NEUTRAL SATIN ANODIZING
OBERFLÄCHENBEHANDLUNG ALUMINIUM : NEUTRAL SATIN ANODISIERUNG

SCHEMA - DIAGRAM - SCHEMA



via S. Quirico, 201/H
50013 Campi Bisenzio - FI
www.oleorama.it
oleorama@oleorama.it
export@oleorama.it

sch 6



COMPANY WITH
QUALITY SYSTEM
CERTIFIED BY DNV GL
= ISO 9001 =

COLLETTORE OLIO
OIL MANIFOLD
ÖLVERTEILERBLOCK

CODICE/CODE/CODE

CMA0240-OA-0 **-OL**

N° STAZIONI
NO. OF STATIONS
ANZAHL STATIONEN

- * **A**- alluminio (standard)
- S**- acciaio (su richiesta)
- X**- acciaio inox (su richiesta)
- * **A**- aluminium (standard)
- S**- steel (on request)
- X**- stainless steel (on request)
- * **A**- aluminium (standard)
- S**- stahl (auf Anfrage)
- X**- edelstahl (auf Anfrage)

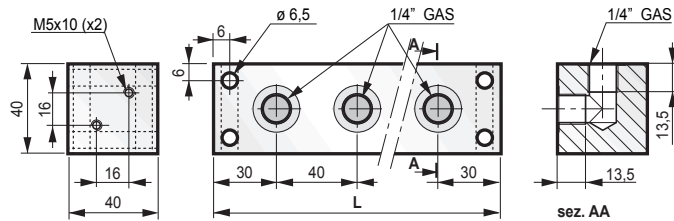
N° (N° STAZIONI) (NO. OF STATIONS) (ANZAHL STATIONEN)	L	PESO WEIGHT GEWICHT kg
2	100	0,38
3	140	0,54
4	180	0,7
5	220	0,87
6	260	1,03
7	300	1,19
-	-	-
-	-	-

COLLETTORE SCHEMA A "L" INDIPENDENTI
MANIFOLDS WITH INDEPENDENT "Ls" SCHEME
VERTEILERBLOCK MIT "Ls" UNABHÄNGIGEN SCHEMA



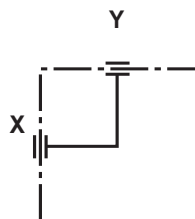
FOTO/PICTURE/PICTURE

CMA0240-OA-05-OL



MASSIMA PRESSIONE DI LAVORO: 250 BAR (LEGA DI ALUMINIO)
MAXIMUM OPERATING PRESSURE: 250 BAR (ALUMINIUM ALLOY)
MAXIMALER BETRIEBSDRUCK: 250 BAR (ALUMINIUMLEGIERUNG)
TRATTAMENTO SUPERFICIALE ALLUMINIO: ANODIZZAZIONE NEUTRA SATINATA
ALUMINIUM SURFACE TREATMENT: NEUTRAL SATIN ANODIZING
OBERFLÄCHENBEHANDLUNG ALUMINIUM : NEUTRAL SATIN ANODISIERUNG

SCHEMA - DIAGRAM - SCHEMA



PER 2÷7 STAZIONI
FOR 2 TO 7 STATIONS
FÜR 2 – 7 STATIONEN



via S. Quirico, 201/H
50013 Campi Bisenzio - FI
www.oleorama.it
oleorama@oleorama.it
export@oleorama.it



COMPANY WITH
QUALITY SYSTEM
CERTIFIED BY DNV GL
= ISO 9001 =

COLLETTORE OLIO
OIL MANIFOLD
ÖLVERTEILERBLOCK

CODICE/CODE/CODE

CMA0250-OB-0 **-OL**

N° STAZIONI
NO. OF STATIONS
ANZAHL STATIONEN

- * **A**- alluminio (standard)
- S**- acciaio (su richiesta)
- X**- acciaio inox (su richiesta)
- * **A**- aluminium (standard)
- S**- steel (on request)
- X**- stainless steel (on request)
- * **A**- aluminium (standard)
- S**- stahl (auf Anfrage)
- X**- edelstahl (auf Anfrage)

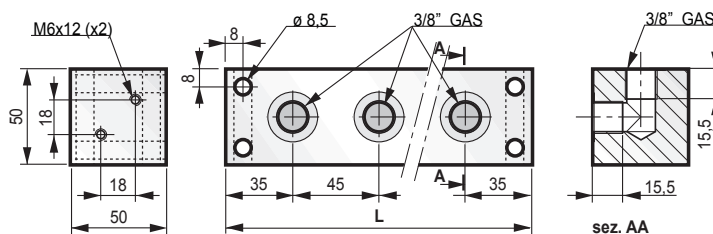
N° (N° STAZIONI) (NO. OF STATIONS) (ANZAHL STATIONEN)	L	PESO WEIGHT GEWICHT kg
2	115	0,67
3	160	0,95
4	205	1,23
5	250	1,51
6	295	1,79
7	340	2,07
8	385	2,35
9	430	2,62

COLLETTORE SCHEMA A "L" INDIPENDENTI
MANIFOLDS WITH INDEPENDENT "Ls" SCHEME
VERTEILERBLOCK MIT "Ls" UNABHÄNGIGEN SCHEMA



FOTO/PICTURE/PICTURE

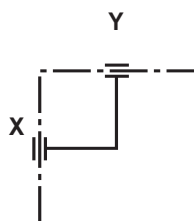
CMA0250-OB-05-OL



MASSIMA PRESSIONE DI LAVORO: 250 BAR (LEGA DI ALUMINIO)
MAXIMUM OPERATING PRESSURE: 250 BAR (ALUMINIUM ALLOY)
MAXIMALER BETRIEBSDRUCK: 250 BAR (ALUMINIUMLEGIERUNG)

TRATTAMENTO SUPERFICIALE ALLUMINIO: ANODIZZAZIONE NEUTRA SATINATA
ALUMINIUM SURFACE TREATMENT: NEUTRAL SATIN ANODIZING
OBERFLÄCHENBEHANDLUNG ALUMINIUM : NEUTRAL SATIN ANODISIERUNG

SCHEMA - DIAGRAM - SCHEMA



PER 2 ÷ 9 STAZIONI
FOR 2 TO 9 STATIONS
FÜR 2 – 9 STATIONEN



via S. Quirico, 201/H
50013 Campi Bisenzio - FI
www.oleorama.it
oleorama@oleorama.it
export@oleorama.it



COMPANY WITH
QUALITY SYSTEM
CERTIFIED BY DNV GL
= ISO 9001 =

COLLETTORE OLIO
OIL MANIFOLD
ÖLVERTEILERBLOCK

CODICE/CODE/CODE

CMA0260-OC-0 **-OL**

N° STAZIONI
NO. OF STATIONS
ANZAHL STATIONEN

- * **A**- alluminio (standard)
- S**- acciaio (su richiesta)
- X**- acciaio inox (su richiesta)
- * **A**- aluminium (standard)
- S**- steel (on request)
- X**- stainless steel (on request)
- * **A**- aluminium (standard)
- S**- stahl (auf Anfrage)
- X**- edelstahl (auf Anfrage)

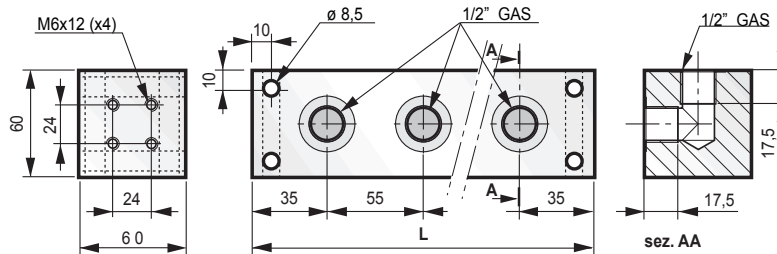
N° (N° STAZIONI) (NO. OF STATIONS) (ANZAHL STATIONEN)	L	PESO WEIGHT GEWICHT kg
2	125	1,05
3	180	1,54
4	235	2,03
5	290	2,51
6	345	3,0
7	400	3,49
8	455	3,97
-	-	-

COLLETTORE SCHEMA A "L" INDIPENDENTI
MANIFOLDS WITH INDPENDENT "Ls" SCHEME
VERTEILERBLOCK MIT "Ls" UNABHÄNGIGEN SCHEMA



FOTO/PICTURE/PICTURE

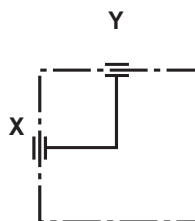
CMA0260-OC-05-OL



MASSIMA PRESSIONE DI LAVORO: 250 BAR (LEGA DI ALUMINIO)
MAXIMUM OPERATING PRESSURE: 250 BAR (ALUMINIUM ALLOY)
MAXIMALER BETRIEBSDRUCK: 250 BAR (ALUMINIUMLEGIERUNG)

TRATTAMENTO SUPERFICIALE ALLUMINIO: ANODIZZAZIONE NEUTRA SATINATA
ALUMINIUM SURFACE TREATMENT: NEUTRAL SATIN ANODIZING
OBERFLÄCHENBEHANDLUNG ALUMINIUM : NEUTRAL SATIN ANODISIERUNG

SCHEMA - DIAGRAM - SCHEMA



PER 2 ÷ 8 STAZIONI
FOR 2 TO 8 STATIONS
FÜR 2 - 8 STATIONEN



via S. Quirico, 201/H
50013 Campi Bisenzio - FI
www.oleorama.it
oleorama@oleorama.it
export@oleorama.it



COMPANY WITH
QUALITY SYSTEM
CERTIFIED BY DNV GL
= ISO 9001 =

COLLETTORE OLIO
OIL MANIFOLD
ÖLVERTEILERBLOCK

CODICE/CODE/CODE

CMA0270-OD-0 **-OL**

N° STAZIONI
NO. OF STATIONS
ANZAHL STATIONEN

- * **A-** alluminio (standard)
- S-** acciaio (su richiesta)
- X-** acciaio inox (su richiesta)
- * **A-** aluminium (standard)
- S-** steel (on request)
- X-** stainless steel (on request)
- * **A-** aluminium (standard)
- S-** stahl (auf Anfrage)
- X-** edelstahl (auf Anfrage)

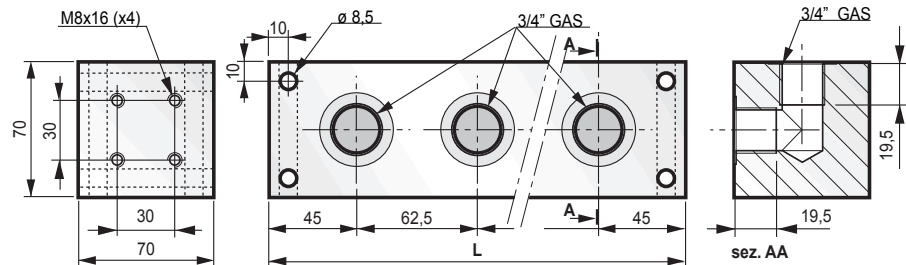
N° (N° STAZIONI) (NO. OF STATIONS) (ANZAHL STATIONEN)	L	PESO WEIGHT GEWICHT kg
2	152,5	1,75
3	215	2,48
4	277,5	3,22
5	340	3,95
6	402,5	4,68
7	465	5,42
-	-	-
-	-	-

COLLETTORE SCHEMA A "L" INDIPENDENTI
MANIFOLDS WITH INDIPENDENT "Ls" SCHEME
VERTEILERBLOCK MIT "Ls" UNABHÄNGIGEN SCHEMA



FOTO/PICTURE/PICTURE

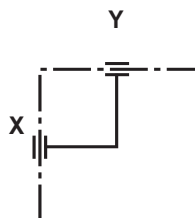
CMA0270-OD-05-OL



MASSIMA PRESSIONE DI LAVORO: 250 BAR (LEGA DI ALUMINIO)
MAXIMUM OPERATING PRESSURE: 250 BAR (ALUMINIUM ALLOY)
MAXIMALER BETRIEBSDRUCK: 250 BAR (ALUMINIUMLEGIERUNG)

TRATTAMENTO SUPERFICIALE ALLUMINIO: ANODIZZAZIONE NEUTRA SATINATA
ALUMINIUM SURFACE TREATMENT: NEUTRAL SATIN ANODIZING
OBERFLÄCHENBEHANDLUNG ALUMINIUM : NEUTRAL SATIN ANODISIERUNG

SCHEMA - DIAGRAM - SCHEMA



PER 2 ÷ 7 STAZIONI
FOR 2 TO 7 STATIONS
FÜR 2 - 7 STATIONEN



via S. Quirico, 201/H
50013 Campi Bisenzio - FI
www.oleorama.it
oleorama@oleorama.it
export@oleorama.it



COMPANY WITH
QUALITY SYSTEM
CERTIFIED BY DNV GL
= ISO 9001 =

COLLETORE OLIO
OIL MANIFOLD
ÖLVERTEILERBLOCK

CODICE/CODE/CODE

CMA0280-OE-0 **-OL**

N° STAZIONI
NO. OF STATIONS
ANZAHL STATIONEN

- * **A-** alluminio (standard)
- S-** acciaio (su richiesta)
- X-** acciaio inox (su richiesta)
- * **A-** aluminium (standard)
- S-** steel (on request)
- X-** stainless steel (on request)
- * **A-** aluminium (standard)
- S-** stahl (auf Anfrage)
- X-** edelstahl (auf Anfrage)

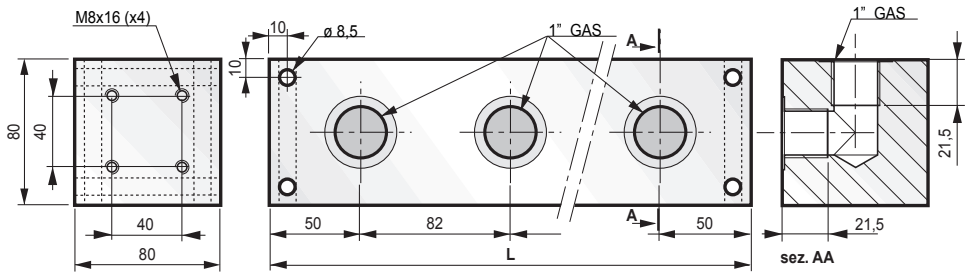
N° (N° STAZIONI) (NO. OF STATIONS) (ANZAHL STATIONEN)	L	PESO WEIGHT GEWICHT kg
2	182	2,72
3	264	3,97
4	346	5,22
5	428	6,47
-	-	-
-	-	-
-	-	-
-	-	-

COLLETORE SCHEMA A "L" INDIPENDENTI
MANIFOLDS WITH INDIPENDENT "Ls" SCHEME
VERTEILERBLOCK MIT "Ls" UNABHÄNGIGEN SCHEMA



FOTO/PICTURE/PICTURE

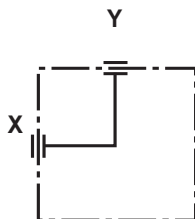
CMA0280-OE-05-OL



MASSIMA PRESSIONE DI LAVORO: 250 BAR (LEGA DI ALUMINIO)
MAXIMUM OPERATING PRESSURE: 250 BAR (ALUMINIUM ALLOY)
MAXIMALER BETRIEBSDRUCK: 250 BAR (ALUMINIUMLEGIERUNG)

TRATTAMENTO SUPERFICIALE ALLUMINIO: ANODIZZAZIONE NEUTRA SATINATA
ALUMINIUM SURFACE TREATMENT: NEUTRAL SATIN ANODIZING
OBERFLÄCHENBEHANDLUNG ALUMINIUM : NEUTRAL SATIN ANODISIERUNG

SCHEMA - DIAGRAM - SCHEMA



PER 2÷5 STAZIONI
FOR 2 TO 5 STATIONS
FÜR 2 – 5 STATIONEN



via S. Quirico, 201/H
50013 Campi Bisenzio - FI
www.oleorama.it
oleorama@oleorama.it
export@oleorama.it



COMPANY WITH
QUALITY SYSTEM
CERTIFIED BY DNV GL
= ISO 9001 =

COLLETTORE OLIO
OIL MANIFOLD
ÖLVERTEILERBLOCK

CODICE/CODE/CODE

CMA0340-OA-0 **-OL**

N° STAZIONI
No. OF STATIONS
ANZAHL STATIONEN

- * **A**- alluminio (standard)
- S**- acciaio (su richiesta)
- X**- acciaio inox (su richiesta)
- * **A**- aluminium (standard)
- S**- steel (on request)
- X**- stainless steel (on request)
- * **A**- aluminium (standard)
- S**- stahl (auf Anfrage)
- X**- edelstahl (auf Anfrage)

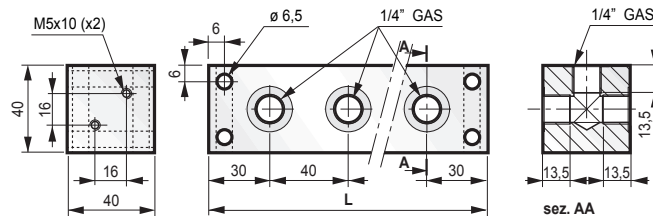
N° (N° STAZIONI) (No. OF STATIONS) (ANZAHL STATIONEN)	L	PESO WEIGHT GEWICHT kg
2	100	0,37
3	140	0,53
4	180	0,69
5	220	0,84
6	260	1,0
7	300	1,16
-	-	-
-	-	-

COLLETTORE SCHEMA A "T" INDIPENDENTI
MANIFOLDS WITH INDEPENDENT "Ts" SCHEME
VERTEILERBLOCK MIT "Ts" UNABHÄNGIGEN SCHEMA



FOTO/PICTURE/PICTURE

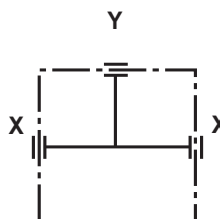
CMA0340-OA-05-OL



MASSIMA PRESSIONE DI LAVORO: 250 BAR (LEGA DI ALUMINIO)
MAXIMUM OPERATING PRESSURE: 250 BAR (ALUMINIUM ALLOY)
MAXIMALER BETRIEBSDRUCK: 250 BAR (ALUMINIUMLEGIERUNG)

TRATTAMENTO SUPERFICIALE ALLUMINIO: ANODIZZAZIONE NEUTRA SATINATA
ALUMINIUM SURFACE TREATMENT: NEUTRAL SATIN ANODIZING
OBERFLÄCHENBEHANDLUNG ALUMINIUM : NEUTRAL SATIN ANODISIERUNG

SCHEMA - DIAGRAM - SCHEMA



PER 2÷7 STAZIONI
FOR 2 TO 7 STATIONS
FÜR 2 – 7 STATIONEN



via S. Quirico, 201/H
50013 Campi Bisenzio - FI
www.oleorama.it
oleorama@oleorama.it
export@oleorama.it



COMPANY WITH
QUALITY SYSTEM
CERTIFIED BY DNV GL
= ISO 9001 =

COLLETTORE OLIO
OIL MANIFOLD
ÖLVERTEILERBLOCK

CODICE/CODE/CODE

CMA0350-OB-0 **-OL**

N° STAZIONI
NO. OF STATIONS
ANZAHL STATIONEN

- * **A**- alluminio (standard)
- S**- acciaio (su richiesta)
- X**- acciaio inox (su richiesta)
- * **A**- aluminium (standard)
- S**- steel (on request)
- X**- stainless steel (on request)
- * **A**- aluminium (standard)
- S**- stahl (auf Anfrage)
- X**- edelstahl (auf Anfrage)

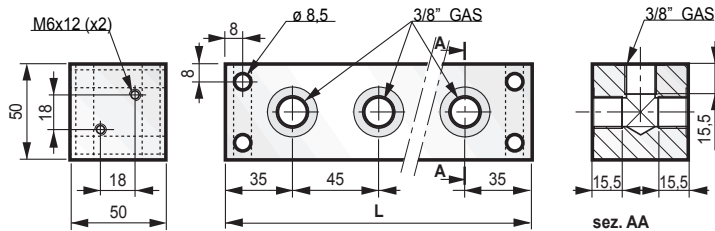
N° (N° STAZIONI) (No. OF STATIONS) (ANZAHL STATIONEN)	L	PESO WEIGHT GEWICHT kg
2	115	0,65
3	160	0,92
4	205	1,19
5	250	1,46
6	295	1,73
7	340	2,0
8	385	2,27
9	430	2,54

COLLETTORE SCHEMA A "T" INDIPENDENTI
MANIFOLDS WITH INDEPENDENT "Ts" SCHEME
VERTEILERBLOCK MIT "Ts" UNABHÄNGIGEN SCHEMA



FOTO/PICTURE/PICTURE

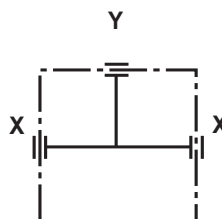
CMA0350-OB-05-OL



MASSIMA PRESSIONE DI LAVORO: 250 BAR (LEGA DI ALUMINIO)
MAXIMUM OPERATING PRESSURE: 250 BAR (ALUMINIUM ALLOY)
MAXIMALER BETRIEBSDRUCK: 250 BAR (ALUMINIUMLEGIERUNG)

TRATTAMENTO SUPERFICIALE ALLUMINIO: ANODIZZAZIONE NEUTRA SATINATA
ALUMINIUM SURFACE TREATMENT: NEUTRAL SATIN ANODIZING
OBERFLÄCHENBEHANDLUNG ALUMINIUM : NEUTRAL SATIN ANODISIERUNG

SCHEMA - DIAGRAM - SCHEMA



PER 2 ÷ 9 STAZIONI
FOR 2 TO 9 STATIONS
FÜR 2 – 9 STATIONEN



via S. Quirico, 201/H
50013 Campi Bisenzio - FI
www.oleorama.it
oleorama@oleorama.it
export@oleorama.it



COMPANY WITH
QUALITY SYSTEM
CERTIFIED BY DNV GL
= ISO 9001 =

COLLETTORE OLIO
OIL MANIFOLD
ÖLVERTEILERBLOCK

CODICE/CODE/COE

CMA0360-OC-0-OL

N° STAZIONI
No. OF STATIONS
ANZAHL STATIONEN

- * A- alluminio (standard)
- S- acciaio (su richiesta)
- X- acciaio inox (su richiesta)
- * A- aluminium (standard)
- S- steel (on request)
- X- stainless steel (on request)
- * A- aluminium (standard)
- S- stahl (auf Anfrage)
- X- edelstahl (auf Anfrage)

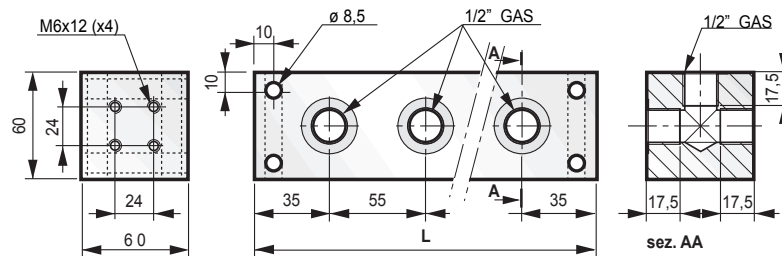
N° (N° STAZIONI) (No. OF STATIONS) (ANZAHL STATIONEN)	L	PESO WEIGHT GEWICHT kg
2	125	1,02
3	180	1,49
4	235	1,96
5	290	2,43
6	345	2,9
7	400	3,37
8	455	3,83
-	-	-

COLLETTORE SCHEMA A "T" INDIPENDENTI
MANIFOLDS WITH INDPENDENT "Ts" SCHEME
VERTEILERBLOCK MIT "Ts" UNABHÄNGIGEN SCHEMA



FOTO/PICTURE/PICTURE

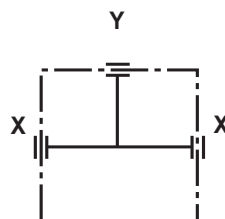
CMA0360-OC-05-OL



MASSIMA PRESSIONE DI LAVORO: 250 BAR (LEGA DI ALUMINIO)
MAXIMUM OPERATING PRESSURE: 250 BAR (ALUMINIUM ALLOY)
MAXIMALER BETRIEBSDRUCK: 250 BAR (ALUMINIUMLEGIERUNG)

TRATTAMENTO SUPERFICIALE ALLUMINIO: ANODIZZAZIONE NEUTRA SATINATA
ALUMINIUM SURFACE TREATMENT: NEUTRAL SATIN ANODIZING
OBERFLÄCHENBEHANDLUNG ALUMINIUM : NEUTRAL SATIN ANODISIERUNG

SCHEMA - DIAGRAM - SCHEMA



PER 2 ÷ 8 STAZIONI
FOR 2 TO 8 STATIONS
FÜR 2 - 8 STATIONEN



via S. Quirico, 201/H
50013 Campi Bisenzio - FI
www.oleorama.it
oleorama@oleorama.it
export@oleorama.it



COMPANY WITH
QUALITY SYSTEM
CERTIFIED BY DNV GL
= ISO 9001 =

COLLETTORE OLIO
OIL MANIFOLD
ÖLVERTEILERBLOCK

CODICE/CODE/CODE

CMA0370-OD-0 **-OL**

N° STAZIONI
NO. OF STATIONS
ANZAHL STATIONEN

- * **A**- alluminio (standard)
- S**- acciaio (su richiesta)
- X**- acciaio inox (su richiesta)
- * **A**- aluminium (standard)
- S**- steel (on request)
- X**- stainless steel (on request)
- * **A**- aluminium (standard)
- S**- stahl (auf Anfrage)
- X**- edelstahl (auf Anfrage)

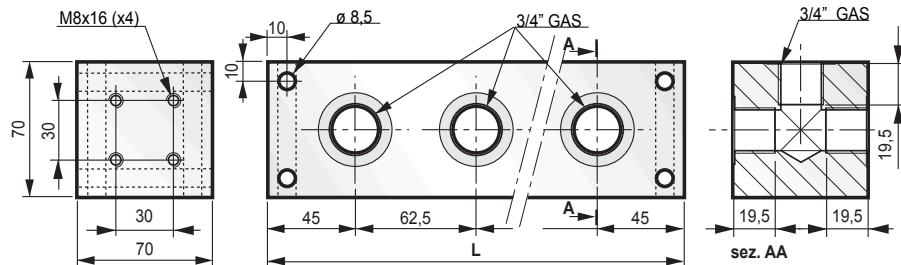
N° (N° STAZIONI) (NO. OF STATIONS) (ANZAHL STATIONEN)	L	PESO WEIGHT GEWICHT kg
2	152,5	1,68
3	215	2,39
4	277,5	3,09
5	340	3,79
6	402,5	4,49
7	465	5,19
-	-	-
-	-	-

COLLETTORE SCHEMA A "T" INDIPENDENTI
MANIFOLDS WITH INDPENDENT "Ts" SCHEME
VERTEILERBLOCK MIT "Ts" UNABHÄNGIGEN SCHEMA



FOTO/PICTURE/PICTURE

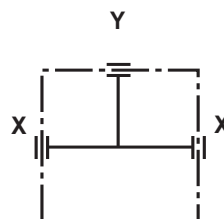
CMA0370-OD-05-OL



MASSIMA PRESSIONE DI LAVORO: 250 BAR (LEGA DI ALUMINIO)
MAXIMUM OPERATING PRESSURE: 250 BAR (ALUMINIUM ALLOY)
MAXIMALER BETRIEBSDRUCK: 250 BAR (ALUMINIUMLEGIERUNG)

TRATTAMENTO SUPERFICIALE ALLUMINIO: ANODIZZAZIONE NEUTRA SATINATA
ALUMINIUM SURFACE TREATMENT: NEUTRAL SATIN ANODIZING
OBERFLÄCHENBEHANDLUNG ALUMINIUM : NEUTRAL SATIN ANODISIERUNG

SCHEMA - DIAGRAM - SCHEMA



PER 2 ÷ 7 STAZIONI
FOR 2 TO 7 STATIONS
FÜR 2 - 7 STATIONEN



via S. Quirico, 201/H
50013 Campi Bisenzio - FI
www.oleorama.it
oleorama@oleorama.it
export@oleorama.it



COMPANY WITH
QUALITY SYSTEM
CERTIFIED BY DNV GL
= ISO 9001 =

COLLETTORE OLIO
OIL MANIFOLD
ÖLVERTEILERBLOCK

CODICE/CODE/COE

CMA0380-OE-0  **-OL**

N° STAZIONI
NO. OF STATIONS
ANZAHL STATIONEN

- * **A**- alluminio (standard)
- S**- acciaio (su richiesta)
- X**- acciaio inox (su richiesta)
- * **A**- aluminium (standard)
- S**- steel (on request)
- X**- stainless steel (on request)
- * **A**- aluminium (standard)
- S**- stahl (auf Anfrage)
- X**- edelstahl (auf Anfrage)

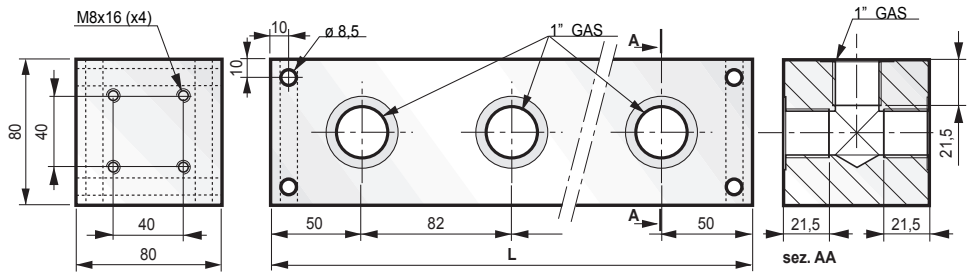
N° (N° STAZIONI) (NO. OF STATIONS) (ANZAHL STATIONEN)	L	PESO WEIGHT GEWICHT kg
2	182	2,61
3	264	3,81
4	346	5,0
5	426	6,2
-	-	-
-	-	-
-	-	-
-	-	-

COLLETTORE SCHEMA A "T" INDIPENDENTI
MANIFOLDS WITH INDEPENDENT "Ts" SCHEME
VERTEILERBLOCK MIT "Ts" UNABHÄNGIGEN SCHEMA



FOTO/PICTURE/PICTURE

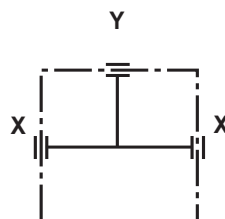
CMA0380-OE-05-OL



MASSIMA PRESSIONE DI LAVORO: 250 BAR (LEGA DI ALUMINIO)
MAXIMUM OPERATING PRESSURE: 250 BAR (ALUMINIUM ALLOY)
MAXIMALER BETRIEBSDRUCK: 250 BAR (ALUMINIUMLEGIERUNG)

TRATTAMENTO SUPERFICIALE ALLUMINIO: ANODIZZAZIONE NEUTRA SATINATA
ALUMINIUM SURFACE TREATMENT: NEUTRAL SATIN ANODIZING
OBERFLÄCHENBEHANDLUNG ALUMINIUM : NEUTRAL SATIN ANODISIERUNG

SCHEMA - DIAGRAM - SCHEMA



PER 2÷5 STAZIONI
FOR 2 TO 5 STATIONS
FÜR 2 - 5 STATIONEN



via S. Quirico, 201/H
50013 Campi Bisenzio - FI
www.oleorama.it
oleorama@oleorama.it
export@oleorama.it



OLEO-RAMA S.r.l. - Via S. Quirico, 201/H
50013 Campi Bisenzio - Firenze
Tel. +39 055 898441/+39 055 898444 - Fax +39 055 8969027
www.oleorama.it
e-mail for Italy: oleorama@oleorama.it
e-mail for Export: export@oleorama.it



Via F.lli Cervi, 73
50010 Campi Bisenzio (Firenze) - Italy
Tel. +39 055.8985806 - Fax +39 055.898434
www.pentafluid.it
e-mail for Italy: tecnico2@pentafluid.it
e-mail for Export: export@pentafluid.it