

HYDRAULIC MOTORS

BOLT ON HYDRAULIC VALVES TO SUIT FLOWFIT AND M+S HYDRAULIC MOTORS

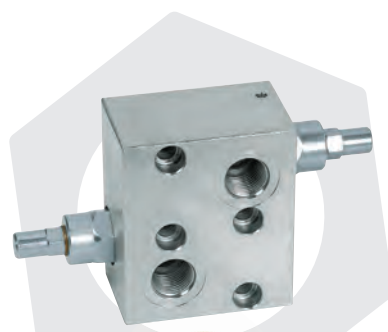
PRODUCT	PAGE
BDR TYPE	223
BDS TYPE	223
BVR TYPE	224



**FROM
ONLY
£150.58
+VAT**



**FROM
ONLY
£60.17
+VAT**



**FROM
ONLY
£61.79
+VAT**



QUALITY PRODUCTS



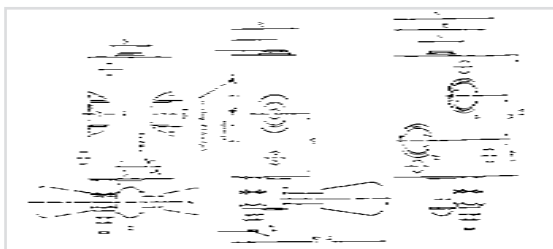
FREE ADVICE

**FREE UK
NEXT DAY
DELIVERY
ON ALL
WEB
ORDERS**

BDR TYPE

MOTOR MOUNTED, LEVER OPERATED DIRECTIONAL CONTROL VALVES C/W 3 POSITION DETENT KIT

www.flowfitonline.com
TECH. DATA SHEET
BOHV1



Manifold mounts directly onto ports of EPM & EPRM (OMP & OMR) motor.

TECHNICAL DATA

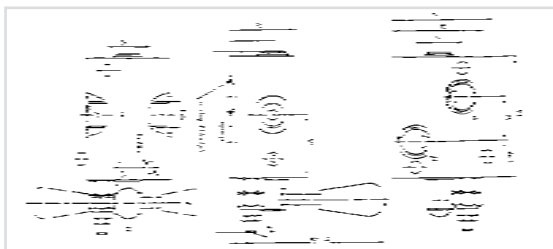
- Nominal flow rate 25 l/min for X = 38
- Nominal flow rate 50 l/min for X = 12
- Nominal pressure 210 bar
- Relief valve variation ratio 10-250 bar

PART NO.	FLOW L/MIN	NOMINAL PRESSURE (BAR)	NETT. PRICE	
			£ STERLING	€ EUROS
BDR-38-04	25	210	£150.58	€ 203.29
BDR-38-05	25	210	£150.58	€ 203.29
BDR-12-04	50	210	£150.58	€ 203.29
BDR-12-05	50	210	£150.58	€ 203.29

BDS TYPE

MOTOR MOUNTED, LEVER OPERATED DIRECTIONAL CONTROL VALVES C/W 3 POSITION DETENT KIT AND INTEGRAL RELIEF VALVE

www.flowfitonline.com
TECH. DATA SHEET
BOHV2



Manifold mounts directly onto ports of EPMS (OMS) motor.

TECHNICAL DATA

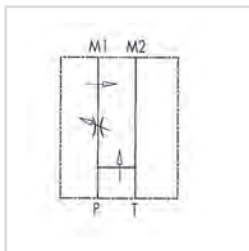
- Nominal flow rate 25 l/min for X = 38
- Nominal flow rate 50 l/min for X = 12
- Nominal pressure 210 bar
- Relief valve variation ratio 10-250 bar

PART NO.	FLOW L/MIN	NOMINAL PRESSURE (BAR)	NETT. PRICE	
			£ STERLING	€ EUROS
BDS-38-04	25	210	£150.58	€ 203.29
BDS-38-05	25	210	£150.58	€ 203.29
BDS-12-04	50	210	£150.58	€ 203.29
BDS-12-05	50	210	£150.58	€ 203.29

If the part number is not listed please ask the Flowfit Sales Team

3 PORT FLOW CONTROL VALVE EXCESS TO TANK FLANGEABLE ON DANFOSS MOTORS OMP/OMR

www.flowfitonline.com
TECH. DATA SHEET
BOHV3



USE AND OPERATION

This valve enables to keep "P" flow constant to a certain setting, independently of the required pressure or the inlet flow of the valve. Exceeded flow is drained directly in T (tank).

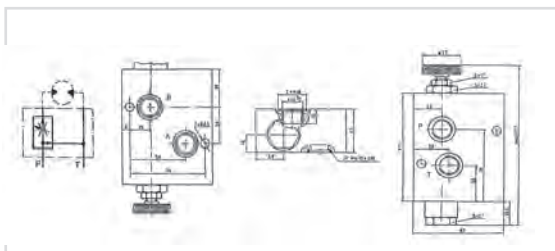
Body: zinc-plated steel, Internal parts: Hardened and ground steel, Seals: Buna N standard, Tightness: By diameter combination. Minor leakage (few drops per minute), Applications: Connect M1 and M2 to the motor and P and T to the pressure.

PART NO.	TYPE	BSP PORTS	MAX INLET FLOW	MAX ADJUSTED FLOW	MAX PRESSURE (BAR)	NETT. PRICE	
						£ STERLING	€ EUROS
V1121	RFP3 1/2" OMP/OMR	1/2"	50 L/MIN	30 L/MIN	350	£89.15	€ 120.36

BVR TYPE

BVR TYPE MOTOR MOUNTED PRESSURE COMPENSATED FLOW CONTROL VALVE

www.flowfitonline.com
TECH. DATA SHEET
BOHV4

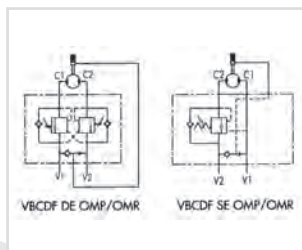


Manifold mounts directly onto ports of EPM and EPRM (OMP + OMR MOTORS)

PART NO.	FLOW L/MIN	MAX PRESSURE (BAR)	PRICE	
			£ STERLING	€ EUROS
BV/R/12/05	100	250	£143.62	€ 193.89

OVERCENTRE VALVES FLANGEABLE ON DANFOSS MOTORS OMP/OMR

www.flowfitonline.com
TECH. DATA SHEET
BOHV5



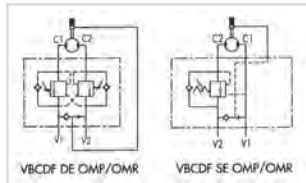
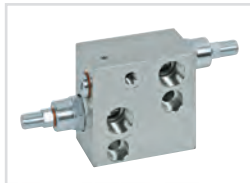
Direct flange is ideal for Danfoss motor type omp-omr and provides a maximum safety, very low pressure drops and solid installation

CODE	TYPE	PILOT RATIO	MAX FLOW L/MIN	MAX PRESSURE BAR	NETT. PRICE	
					£ STERLING	€ EUROS
V0415	VBCDF 1/2" SE OMP-OMR	1:4,5	50	350	£61.79	€ 83.41
V0425	VBCDF 1/2" DE OMP-OMR	1:4,5	50	350	£108.71	€ 146.76
V0415/SF	VBCDF 1/2" SE OMP-OMR SF/ BRAKE UNCLAPING	1:4,5	50	350	£68.36	€ 92.30
V0425/SF	VBCDF 1/2" DE OMP-OMR SF/ BRAKE UNCLAPING	1:4,5	50	350	£110.24	€ 148.81

NB. BRAKE UNCLAPING MEANS " A MECHANICAL FAIL SAFE BRAKE "

OVERCENTRE VALVES FLANGEABLE ON DANFOSS MOTORS OMS

www.flowfitonline.com
TECH. DATA SHEET
BOHV6



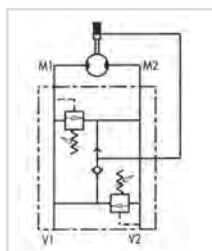
Direct flange is ideal for Danfoss motors type oms and provides a maximum safety, very low pressure drops and solid installation

CODE	TYPE	PILOT RATIO	MAX FLOW L/MIN	MAX PRESSURE BAR	NETT. PRICE	
					£ STERLING	€ EUROS
V0416	VBCDF 1/2" SE OMS	1:4,5	50	350	£60.17	€ 81.23
V0426	VBCDF 1/2" DE OMS	1:4,5	50	350	£98.16	€ 132.52
V0416/SF	VBCDF 1/2" SE OMS /SF BRAKE UNCLAPING	1:8	50	350	£65.55	€ 88.48
V0426/SF	VBCDF 1/2" DE OMS SF/ BRAKE UNCLAPING	1:8	50	350	£107.76	€ 145.48

NB. BRAKE UNCLAPING MEANS " A MECHANICAL FAIL SAFE BRAKE "

DUAL CROSS RELIEF VALVE FLANGEABLE ON DANFOSS MOTORS OMS-OMP/OMR-OMT

www.flowfitonline.com
TECH. DATA SHEET
BOHV7



USE AND OPERATION

Made up by 2 relief valves with crossed tank, this valve is used to block pressure to a certain setting in the 2 ports of an actuator/hydraulic motor. It's ideal to provide protection against sudden shock pressures and to adjust different pressures in the 2 ports of an hydraulic circuit as well. Direct flange is ideal for Danfoss motors type OMS, OMP/OMR and OMT and provides a maximum safety, very low pressure drops and solid installation.

Body: Zinc-plated steel Internal parts: Hardened and ground steel, Seals: Buna N standard, Poppet type: minor leakage

Applications: Flange M1 and M2 directly to the motor and connect V1 and V2 to pressure flow.

ON REQUEST: Different setting range available (See table below) Other settings available (CODE/T: please specify the desired setting). Single acting with just 1 relief available (CODE/ SE). Brake unclamping (CODE/ SF)

CODE	TYPE	MAX FLOW L/MIN	MAX PRESSURE BAR	NETT. PRICE	
				£ STERLING	€ EUROS
V0490	VAU 1/2" OMS	50	300	£46.71	€ 63.06
V0500	VAU 1/2" OMP/OMR	60	300	£49.98	€ 67.48
V0505	VAU 3/4" OMT	100	300	£56.94	€ 76.86
V0490/SE	VAU 1/2" OMS SE/ SINGLE ACTING	50	300	£44.98	€ 60.73
V0500/SE	VAU 1/2" OMP/OMR SE/SINGLE ACTING	60	300	£46.45	€ 62.70
V0505/SE	VAU 3/4" OMT SE/SINGLE ACTING	100	300	£55.65	€ 75.14
V0490/T	VAU 1/2" OMS PRESSURE PRESET	50	300	£48.89	€ 66.00
V0500/T	VAU 1/2" OMP/OMR PRESSURE PRESET	60	300	£49.99	€ 67.49
V0505/T	VAU 3/4" OMT PRESSURE PRESET	100	300	£59.21	€ 79.93
V0490/V	VAU 1/2" OMS HANDKNOB	50	300	£51.19	€ 69.11
V0500/V	VAU 1/2" OMP/OMR HANDKNOB	60	300	£52.41	€ 70.76
V0505/V	VAU 3/4" OMT HANDKNOB	100	300	£50.79	€ 68.57
V0490/P	VAU 1/2" OMS SEALING CAP	50	300	£52.39	€ 70.73
V0500/P	VAU 1/2" OMP/OMR SEALING CAP	60	300	£53.45	€ 72.15
V0505/P	VAU 3/4" OMT SEALING CAP	100	300	£62.66	€ 84.60
V0490/SF	VAU 1/2" OMS SF/ BRAKE UNCLAPING	50	300	£52.20	€ 70.47
V0500/SF	VAU 1/2" OMP/OMR SF/ BRAKE UNCLAPING	60	300	£53.25	€ 71.90
V0505/SF	VAU 3/4" OMT SF/ BRAKE UNCLAPING	100	300	£62.50	€ 84.37

NB. BRACE UNCLAPING MEANS " A MECHANICAL FAIL SAFE BRAKE "

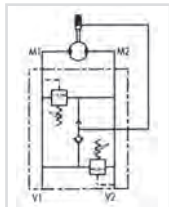
SPRINGS

SETTING RANGE BAR	PRESSURE INCREASE (BAR/TURN)	STANDARD SETTINGBAR
10 - 50*	7	30
20 - 100	12	75
10 - 180 (Standard)	30	90
50 - 250	45	130
80 - 300	50	150

* = For setting less than 70 Bar Q = 12 l/m

DUAL CROSS RELIEF VALVE FLANGEABLE ON SAMHYDRAULIK MOTORS AG - AR

www.flowfitonline.com
TECH. DATA SHEET
BOHV8



USE AND OPERATION

Made up by 2 relief valves with crossed tank, this valve is used to block pressure to a certain setting in the 2 ports of an actuator/hydraulic motor. It's ideal to provide protection against sudden shock pressures and to adjust different pressures in the 2 ports of an hydraulic circuit as well. Direct flange is ideal for Samhydraulic motors type AG - AR and provides a maximum safety, very low pressure drops and solid installation.

Body: Zinc-plated steel Internal parts: Hardened and ground steel, Seals: Buna N standard, Poppet type: minor leakage

Applications: Flange M1 and M2 directly to the motor and connect V1 and V2 to pressure flow.

ON REQUEST: Different setting range available (See table below) Other settings available (CODE/T: please specify the desired setting). Brake unclaping (CODE/ SF)

CODE	TYPE	MAX FLOW L/MIN	MAX PRESSURE BAR	NETT. PRICE	
				£ STERLING	€ EUROS
V0455	VAU 1" AG - AR	60	300	£46.70	€ 63.04
V0455/T	VAU 1" AG - AR PRESSURE PRESET	60	300	£48.83	€ 65.91
V0455/V	VAU 1" AG - AR HANDKNOB	60	300	£51.00	€ 68.85
V0455/P	VAU 1" AG - AR SEALING CAP	60	300	£52.08	€ 70.31
V0455/SF	VAU 1" AG - AR SF/ BRAKE UNCLAPING	60	300	£52.08	€ 70.31

BRACE UNCLAPING MEANS " A MECHANICAL FAIL SAFE BRAKE "

SPRINGS

SETTING RANGE BAR	PRESSURE INCREASE (BAR/TURN)	STANDARD SETTINGBAR
10 - 50*	7	30
20 - 100	12	75
10 - 180 (Standard)	30	90
50 - 250	45	130
80 - 300	50	150

* = For setting less than 70 Bar Q = 12 l/m