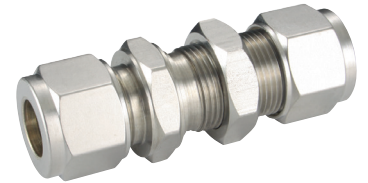
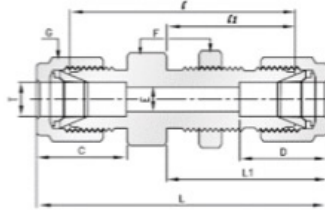


316 Stainless Steel Twin Ferrule Imperial Tube Fittings



Bulkhead Unions

Tube x Tube



PART NO	T in	E min	F	G	D	C	I	I1	L	L1	PANEL HOSE SIZE	PANEL MAX THICKNESS
BU-125	1/8	2.28	1/2	7/16	12.70	15.24	38.10	24.63	51.30	31.24	8.33	12.7
BU-187	3/16	3.04	9/16	1/2	13.71	16.00	40.38	25.40	53.59	32	9.92	12.7
BU-250	1/4	4.82	5/8	9/16	15.24	17.78	42.92	26.16	57.65	33.52	11.5	10.16
BU-312	5/16	6.35	11/16	5/8	16.25	18.54	45.92	28.44	60.70	35.81	13.09	11.17
BU-375	3/8	7.11	3/4	11/16	16.76	19.30	47.49	29.46	62.23	36.83	14.65	11.17
BU-500	1/2	10.41	15/16	7/8	22.86	21.84	47.49	31.75	71.12	41.91	19.44	12.7
BU-625	5/8	12.70	1-1/16	1	24.38	21.84	50.80	32.51	72.64	42.67	22.62	12.7
BU-750	3/4	15.74	1-3/16	1-1/8	24.38	21.84	52.32	37.33	78.99	47.49	25.79	16.76
BU-1000	1	22.35	1-5/8	1-1/2	31.24	26.41	64.26	45.21	95.75	57.4	33.73	19.05