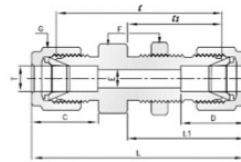


316 Stainless Steel Twin Ferrule Metric Tube Fittings

Bulkhead Unions

Tube x Tube



Part No	T mm	E mm	F	F1	G	D	C	I	I1	L	LI	Panel Hose Drill Size	Max Panel Thickness
PBU - M03	3	2.4	14	12.7	12	12.9	15.3	38.1	24.6	51.3	31.2	8.3	12.7
PBU - M04	4	2.4	14	14.3	12	13.7	15.3	40.4	25.4	53.6	32.0	9.9	12.7
PBU - M06	6	4.8	16	15.9	14	15.3	16.1	42.9	26.2	57.7	33.6	11.5	10.2
PBU - M08	8	6.4	16	17.5	16	16.2	17.7	46.0	28.6	61.0	36.1	13.1	11.2
PBU - M10	10	7.9	22	22.0	19	17.2	18.6	48.5	29.4	63.7	37.0	16.2	11.2
PBU - M12	12	9.5	24	23.8	22	22.8	19.5	50.8	31.8	71.0	41.9	19.5	12.7
PBU - M15	15	11.9	27	27.0	25	24.4	22.0	52.3	32.5	72.5	42.6	22.8	12.7
PBU - M16	16	12.7	27	27.0	25	24.4	22.0	52.3	32.5	72.5	42.6	22.8	12.7
PBU - M18	18	15.1	30	30.0	30	24.4	22.0	58.7	37.7	78.9	47.4	26.0	16.8
PBU - M20	20	15.9	35	35.0	32	26.0	22.0	64.3	42.9	84.5	53.0	29.0	17
PBU - M25	25	21.8	41.3	41.3	38	31.3	26.5	71.4	45.2	95.9	57.5	33.7	19.1