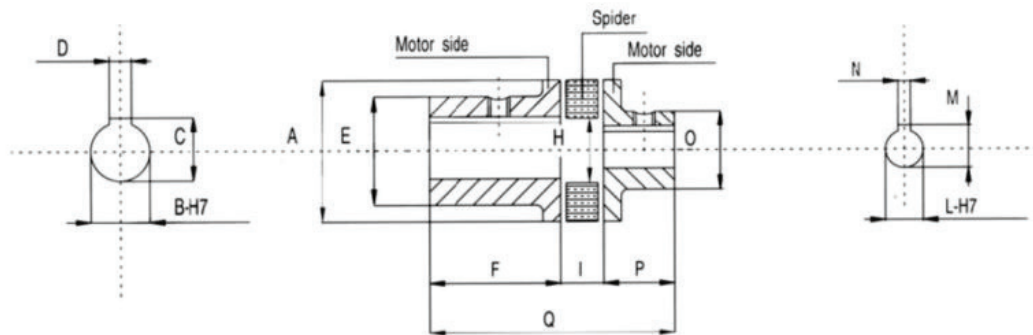
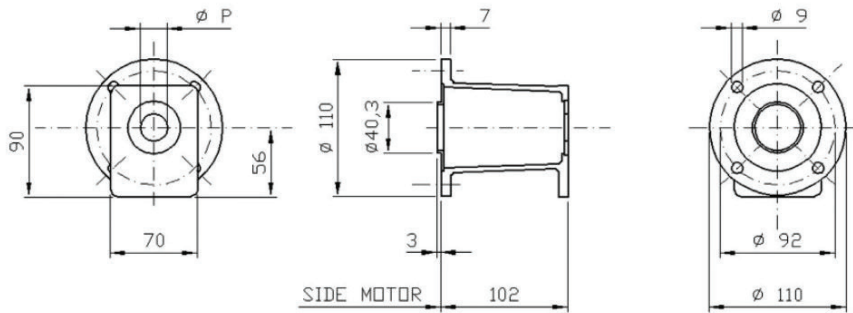


TECHNICAL DATA				
TYPE GN	MAX COUPLE Nm	MISALIGNMENT MAX		
		RADIAL	AXIAL	ANGULAR
		mm	mm	
100	11,5	0,4	1	1°30'
300	11,5	0,8	1,3	1°30'
500	310	1	1,8	1°30'

Working temperature -20 + 80 ° C



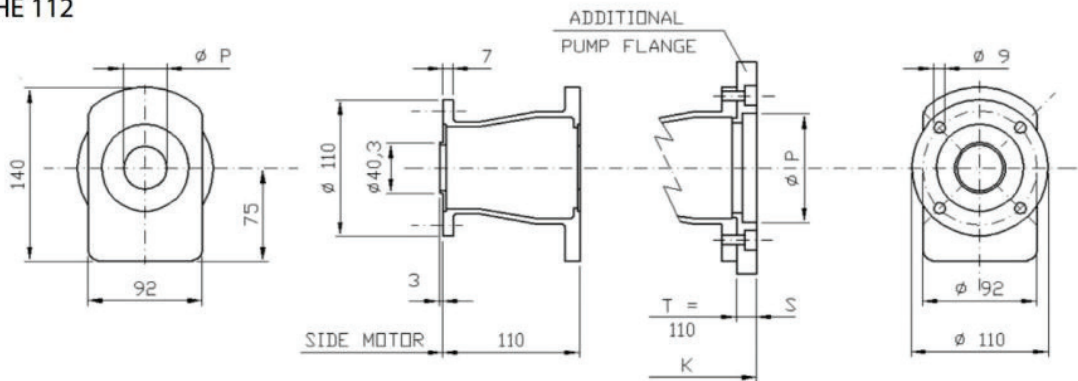
ELASTIC COUPLING																
TYPE GN	MOTOR HALF						SPIDER				PUMP HALF					
	TYPE	A	L min	L max	E	F max	TYPE	A	H	I	TYPE	A	L min	L max	O	P max
100	HC1***-050	42	16	20	36	50	ER100	42	22	15	HC1***- A020	42	8	16	28	20
											HC1***-B030	42	8	16	28	30
300	HC3***-048	65	18	24	46	48	ER300	65	30	20	HC3***- A022	65	12	20	36	22
											HC3***-B035	65	12	28	46	35
											HC3***- C045	65	22	28	46	45
500	HC5***-080	95	22	40	70	80	ER500	95	46	26	HC5***- A025	95	12	22	50	25
											HC5***-B035	95	12	28	56	35
											HC5***- C048	95	22	40	70	48



BELL-HOUSING			PUMP HOLE TYPE	PUMP FACE MACHINING					HEIGHT		ELASTIC COUPLING			
CODE	PUMP SIDE ADAPTOR RING	PUMP CODE		NO HOLES	L	M	N	O	P	T	MOTOR HALF	SPIDER	PUMP HALF	MAX TORQUE Nm
BHE111 C/01	AR 1/01	05M	RECTANGULAR FOR GEAR PUMPS	2	-	66	25,6	M6	22	102	HC1***-050	ER100	HC105A	11,5
BHE111 C/01	AR 1/01	05T		2	-	66	25,6	M6	22	102			HC105B	
BHE111 C/02	AR 1/02	1PM		4	52,4	72	26,2	M6	25,4	102			HC101A	
BHE111 C/03	AR 1/03	1MM		4	56	73	24,5	M6	30	102			HC101B	
BHE111/16	-	1ZB		2	40	40	10,3	M8	32	102			HC101D	

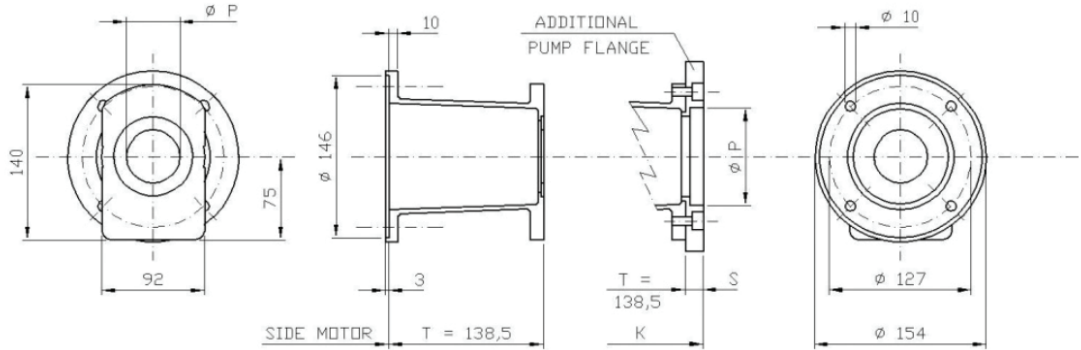
\*\*\* Machining code see tab 02.2 pag 20

## BHE 112



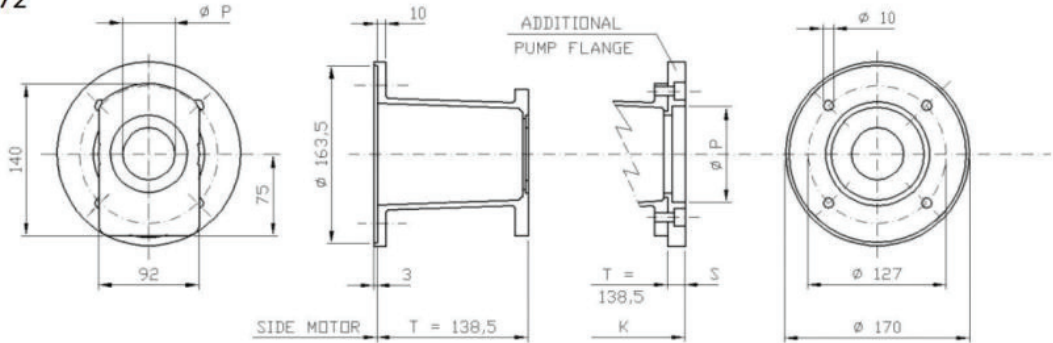
BELL-HOUSING		PUMP CODE	PUMP	PUMP FACE MACHINING	PUMP FACE MACHINING	PUMP FACE MACHINING					HEIGHT			ELASTIC COUPLING			
CODE	ADDITIONAL PUMP FLANGE PUMP SIDE ADAPTOR RING					NO HOLES	L	M	N	O	P	S	T	K	MOTOR HALF	SPIDER	PUMP HALF
BHE112C/04	-	AR 3/04	02M-02C	RECTANGULAR FOR GEAR PUMPS	4	71,5	96	32,5	M8	36,5	-	110	-	HC3***-048	ER300	HC302A-B	115
BHE112/17	-	-	2ZF		4	72	100	34,5	M8	80	-	110	-	-	-	HC302D	115
BHE112/17	FR10C/05	AR 3/06	03M		4	98,5	128	43	M8	50,8	16	110	126	-	-	HC303A	
BHE112/17	FR10C/06	AR 3/06	03C		4	98,5	128	42	M10	50,8	16	110	126	HC3***-048	ER300	HC3***-***	
BHE112/17	FR10C/07	AR 3/06	03T		4	98,5	137	45	M10	50,8	16	110	126	-	-	-	
BHE112/080 A	-	-	080A	FOR SA/ISO STANDARDS	2	100	-	-	M10	80	-	110	-	-	-	-	115
BHE112/080B	-	-	080B		2	110	-	-	M10	80	-	110	-	-	-	-	
BHE112/080E	-	-	080E		4	100	-	-	M8	80	-	110	-	HC3***-048	ER300	HC3***-***	
BHE112/082 A	-	-	082A		2	106,4	-	-	M10	82,55	-	110	-	-	-	-	

## BHE 152



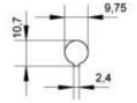
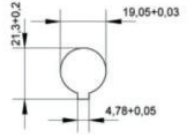
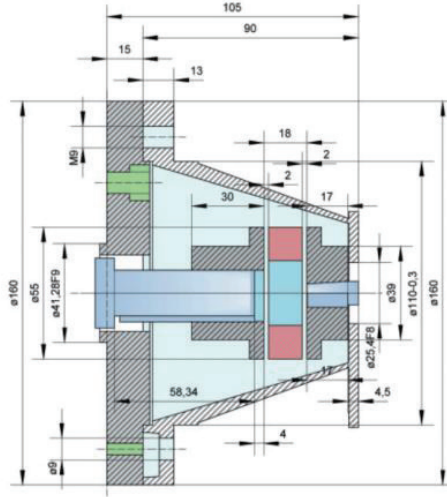
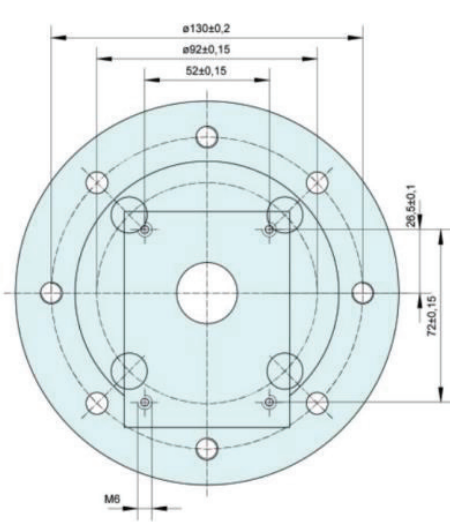
BELL-HOUSING				PUMP FACE MACHINING							HEIGHT				ELASTIC COUPLING			MAX TORQUE Nm	
CODE	ADDITIONAL PUMP FLANGE	ADAPTOR	PUMP CODE	PUMP HOLE TYPE	N. HOLES	L	M	N	O	P	S	T	K	MOTOR HALF	SPIDER	PUMP HALF			
BHE152 C/02	-	AR 3/02	1PM	RECTANGULAR FOR GEAR PUMPS	4	52,4	72	26,2	M6	25,4	-	138,5	-	HC3***-048	ER300	HC301 A	115		
BHE152 C/03	-	AR 3/03	1MM		4	56	73	24,5	M6	30	-	138,5	-			HC301 B			
BHE152/16	-	-	1ZB		2	40	40	10,3	M8	32	-	138,5	-			HC301 D			
BHE152 C/04	-	AR 3/04	02M-02C		4	71,5	96	32,5	M8	36,5	-	138,5	-		ER300	HC302 A-B			
BHE152/17	-	-	2ZF		4	72	100	34,5	M8	80	-	138,5	-			HC302 D			
BHE152/17	FR10C/05	AR 3/06	03M		4	98,5	128	43	M8	50,8	16	138,5	154,5			HC303 A			
BHE152/17	FR10C/06	AR 3/06	03C		4	98,5	128	42	M10	50,8	16	138,5	154,5						
BHE152/17	FR10C/07	AR 3/06	03T		4	98,5	137	45	M10	50,8	16	138,5	154,5		HC3***-048	ER300		HC3***-***	115
BHE152/080 A	-	-	080 A		2	100	-	-	M10	80	-	138,5	-						
BHE152/080 B	-	-	080 B		2	110	-	-	M10	80	-	138,5	-						
BHE152/080 E	-	-	080 E	4	100	-	-	M8	80	-	138,5	-							
BHE152/082 A	-	-	082 A	2	106,4	-	-	M10	82,55	-	138,5	-							
BHE152/080 U	FR60/100B	-	100B	2	140	-	-	M12	100	29	138,5	167,5							
BHE152/080 U	FR60/100G	-	110G	4	125	-	-	M10	100	29	138,5	167,5							
BHE152/080 U	FR60/101B	-	101B	2	146	-	-	M12	101,6	29	138,5	167,5							
BHE152/080 U	FR60/101D	-	101D	4	127	-	-	M12	101,6	29	138,5	167,5							

## BHE 172

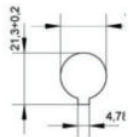
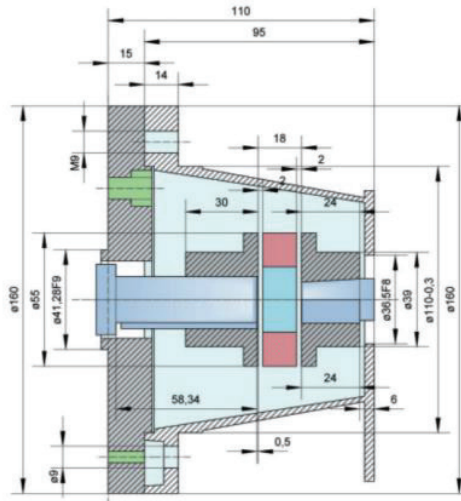
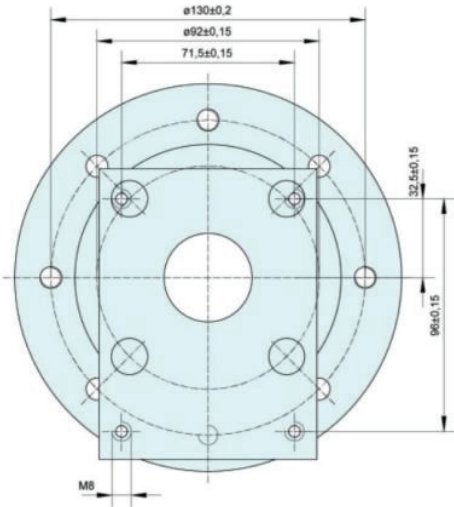


BELL-HOUSING				PUMP FACE MACHINING							HEIGHT				ELASTIC COUPLING			MAX	
CODE	ADDITIONAL PUMP FLANGE	PUMP SIDE ADAPTOR RING	PUMP CODE	PUMP HOLE TYPE	N°	L	M	N	O	P	S	T	K	MOTOR	SPIDER	PUMP			
BHE172 C/02	-	AR 3/02	1PM	RECTANGULAR FOR GEAR PUMP	4	52,4	72	26,2	M6	25,4	-	138,5	-	HC3***-048	ER300	HC301 A	115		
BHE172 C/03	-	AR 3/03	1MM		4	56	73	24,5	M6	30	-	138,5	-			HC301 B			
BHE172/16	-	-	1ZB		2	40	40	10,3	M8	32	-	138,5	-			HC301 D			
BHE172 C/04	-	AR 3/04	02M-02C		4	71,5	96	32,5	M8	36,5	-	138,5	-		ER300	HC302 A-B			
BHE172/17	-	-	2ZF		4	72	100	34,5	M8	80	-	138,5	-			HC302 D			
BHE172/17	FR10C/05	AR 3/06	03M		4	98,5	128	43	M8	50,8	16	138,5	154,5			HC303 A			
BHE172/17	FR10C/06	AR 3/06	03C		4	98,5	128	42	M10	50,8	16	138,5	154,5						
BHE172/17	FR10C/07	AR 3/06	03T		4	98,5	137	45	M10	50,8	16	138,5	154,5		HC3***-048	ER300		HC3***-***	115
BHE172/080 A	-	-	080 A		2	100	-	-	M10	80	-	138,5	-						
BHE172/080 B	-	-	080 B		2	110	-	-	M10	80	-	138,5	-						
BHE172/080 E	-	-	080 E	4	100	-	-	M8	80	-	138,5	-							
BHE172/082 A	-	-	082 A	2	106,4	-	-	M10	82,55	-	138,5	-							
BHE172/080 U	FR60/100B	-	100B	2	140	-	-	M12	100	29	138,5	167,5							
BHE172/080 U	FR60/100G	-	110G	4	125	-	-	M10	100	29	138,5	167,5							
BHE172/080 U	FR60/101B	-	101B	2	146	-	-	M12	101,6	29	138,5	167,5							
BHE172/080 U	FR60/101D	-	101D	4	127	-	-	M12	101,6	29	138,5	167,5							

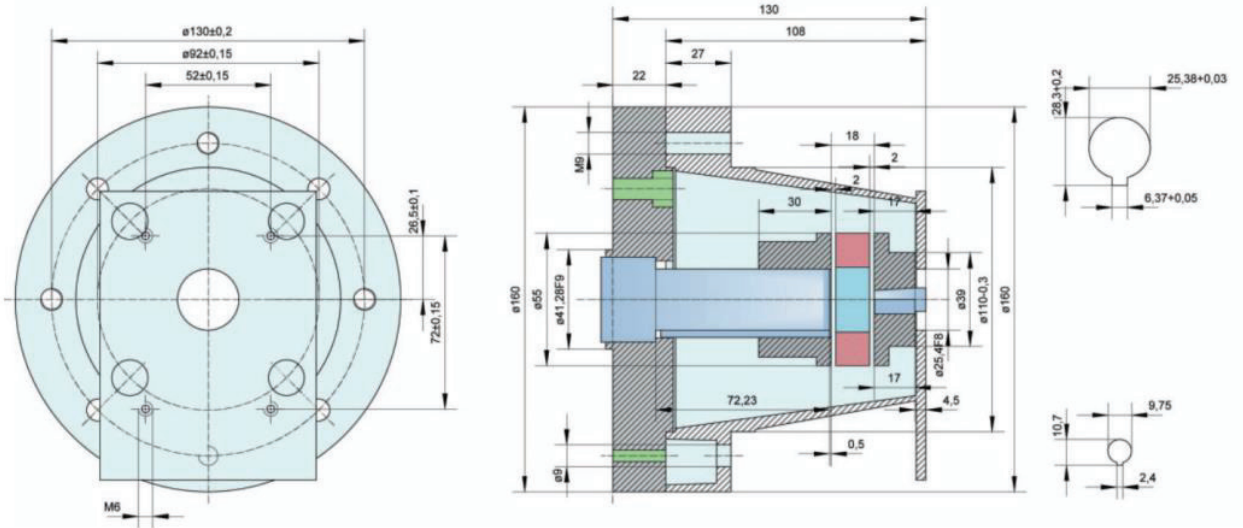
**STANDARD GROUP 1 KIT SUITS HATZ 1B20**



**STANDARD GROUP 2 KIT SUITS HATZ 1B20**



**STANDARD GROUP 1 KIT SUITS HATZ 1B40**



**STANDARD GROUP 2 KIT SUITS HATZ 1B40**

