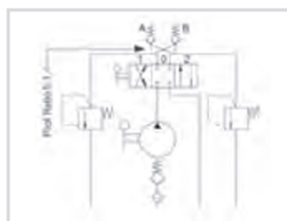


PMDVB 6-12-25-45 BYAB-S DOUBLE ACTING HANDPUMPS

www.flowfitonline.com
TECH. DATA SHEET
HH09



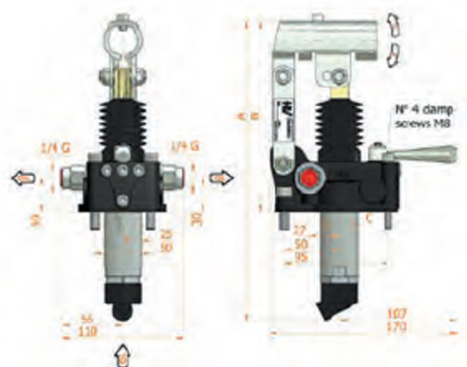
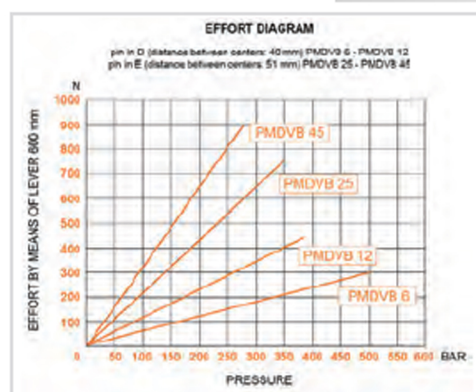
With 4/3 flow divider, With dual pilot check valve. With brakes - with pressure relief valve. Double acting hand pump for a double acting cylinder for fixing to tank



SPECIFICATIONS

- Piston treated with Niploy
- Lever connection: $\varnothing 27$
- Standard colour: Black

- Mounting kit and seals included
- With hydraulic brakes to operate even with pressure less than 50 bar
- Pressure relief valve standard setting: 100 bar



DISPLACEMENT CM ³	A MM	B MM	C MM	D °	E °	ACTUAL DISPLACEMENT CM ³	PRESSURE BAR		MASS KG	CODE WITH BELLOWS
							WORK P.	MAX		
6	253	166	34	26	31	6.970	450	500	3.400	6059.0105
12	253	166	34	26	31	12.095	320	380	3.400	6060.0105
25	273	172	34	30	30	25.280	280	350	3.450	6061.0105
45	283	172	40	45	33	44.532	220	280	3.500	6062.0105