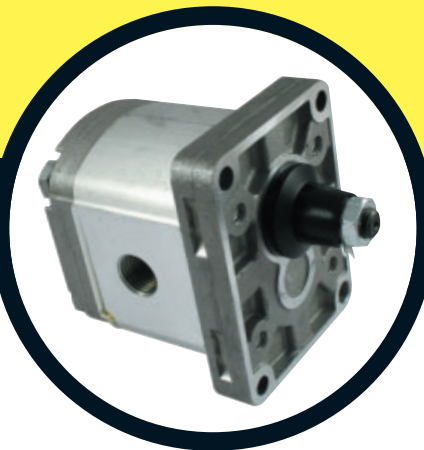
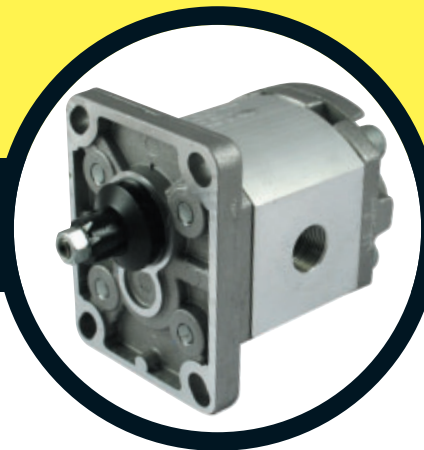
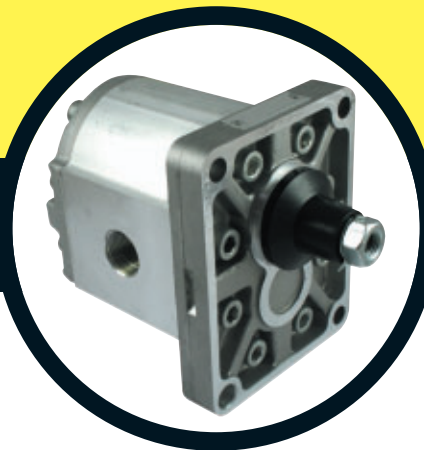
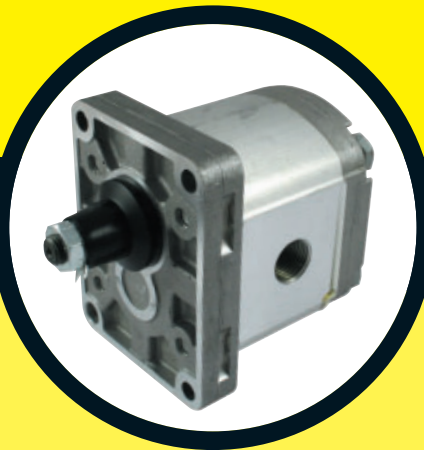


GEAR MOTORS

FEATURES	210	MOTORS GROUP 2 • CONNECTIONS FOR R MOTORS	220
TECHNICAL INFORMATION.....	210	MOTORS GROUP 3 • STANDARD	221
MOTORS GROUP 2 • STANDARD	211	MOTORS GROUP 3 • SAE B, SAE B-OR	222
MOTORS GROUP 2 • SAE A, SAE A-OR	212	MOTORS GROUP 3 • OPTIONAL.....	223
MOTORS GROUP 2 • B80C, B50C	213	MOTORS GROUP 3 • AVAILABLE SHAFTS	224
MOTORS GROUP 2 • E52C	214	MOTORS GROUP 3 • CONNECTIONS FOR R MOTORS	225
MOTORS GROUP 2 • SUPP.STND	215	GROUP 1 GEAR PUMPS + GEAR MOTORS PRICE LIST	226
MOTORS GROUP 2 • OPTIONAL.....	216	GROUP 2 GEAR PUMPS + GEAR MOTORS PRICE LIST	226
MOTORS GROUP 2 • AVAILABLE SHAFTS	218	GROUP 3 GEAR PUMPS + GEAR MOTORS PRICE LIST	226
MOTORS GROUP 2 • CONNECTIONS FOR D-S MOTORS.....	219		



FEATURES



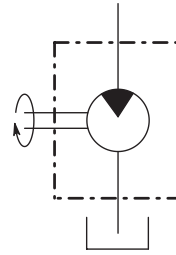
Motors with external gears from group 2 to group 3, divided into 17 displacements from 4 to 61,1cc, up to 270 bar of max working pressure and maximum speed up to 4000 rpm, with hydrostatic balance to reduce the axial slack.

Gear motors are available in unidirectional and reversible versions (reversible motors can be used same in serie circuit).

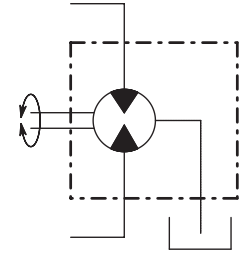
Each motor can be assembled with standard flanges (European, German or SAE) or with special ones (ZF, Perkins and Renault), with conic, cylindrical or splined shaft. Furthermore it is possible to assemble covers with two speed function and with pressure relief valve.

The motors are available in unidirectional D - S and reversible R version.

Unidirectional motor (D-S)



Reversible motor (R)



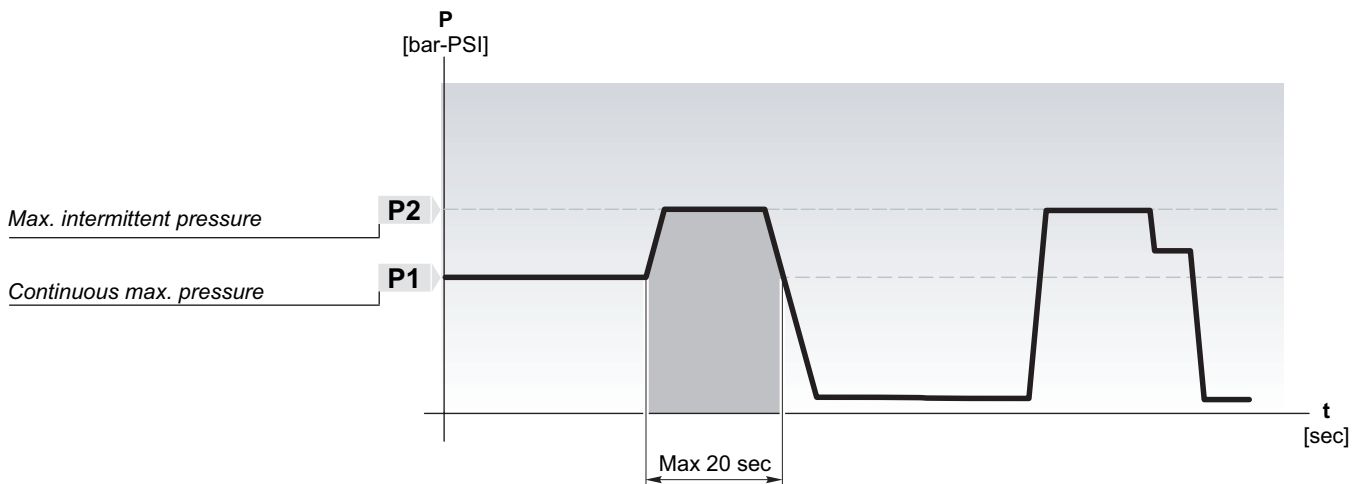
USE CONDITIONS

- Temperature 20°C ÷ 65°C
- Max. temperature - 15 °C ÷ 80°C
- Suction allowed pressure min. 0.7 max. 3 bar (absolute)
- Recommended viscosity 15 ÷ 92 mm² /s
- Start max. viscosity 3000 mm² /s
- Filtering 26/23 150 ISO DIS 4406 until 2175 psi 23/20 ISO DIS 4406 for higher pressure

TECHNICAL INFORMATION



The motors can be subjected to the pressures P1, P2 indicated in the performance tables. The following diagram illustrates the definitions and applicability of these, compared to the rotation speed limits included.



Hydraulic measures

Q Flow	[l/min - Gal/min]
M Torque	[Nm - lbf.in]
P Power	[kW - HP]
V Displacement	[cm ³ /rev - in ³ /rev]
N Speed	[min ⁻¹ - rpm]
Δp Pressure	[bar - PSI]
η_v Volumetric efficiency	
η_m Mechanical efficiency	
η_t Overall efficiency	

Useful formulas

$$Q = \frac{V [\text{cm}^3/\text{rev}] \times n \times 10^3}{\eta_v} \quad \text{l/min}$$

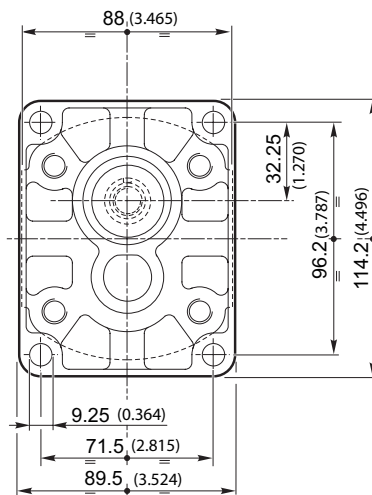
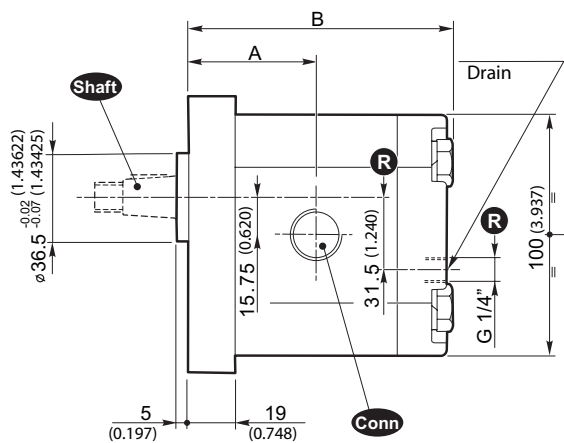
$$M = \frac{\Delta p [\text{bar}] \times V [\text{cm}^3/\text{rev}] \times \eta_m}{62.83} \quad \text{Nm}$$

$$P = \frac{\Delta p [\text{bar}] \times V [\text{cm}^3/\text{rev}] \times n \times \eta_t}{600 \times 1000} \quad \text{kW}$$

Conversion factors

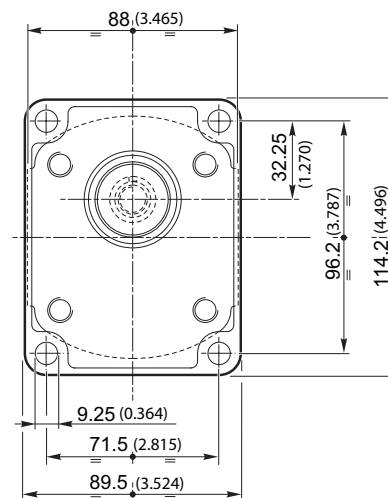
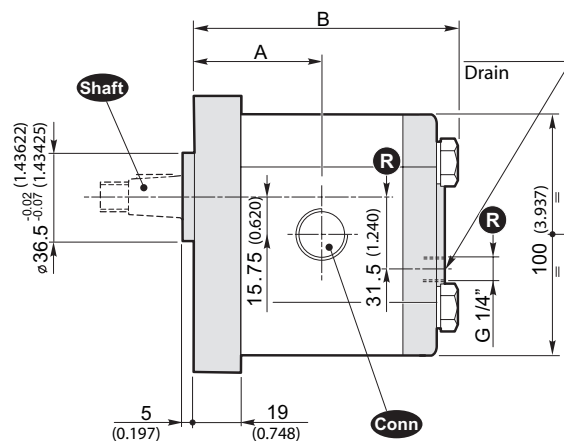
- 1 l/min = 0.2641 US Gal/min
- 1 Nm = 8.851 in·lbs
- 1 Nm = 0.7375 ft·lbs
- 1 N = 0.2248 lbs
- 1kW = 1.34 HP
- 1cm³/giro = 0.061 in³/rev
- 1 bar = 14.5 PSI
- 1 mm = 0.0394 in
- 1 kg = 2.205 lbs

Flange and cover in Aluminium



R Only for reversible motors

Flange and cover in Cast iron

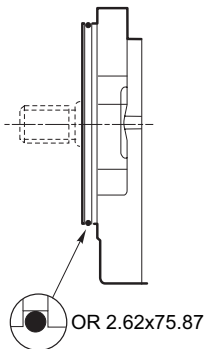


Size	Displacement [cm³/rev] (in³/rev)	STND (Aluminium)		Mass [Kg] (lbs)	Shaft	Conn	STND (Cast iron)		Mass [Kg] (lbs)	Shaft	Conn
		Dimensions					Dimensions				
		A [mm] (inch)	B [mm] (inch)				A [mm] (inch)	B [mm] (inch)			
2SM_4	4 (0.24)	44.4 (1.748)	93 (3.661)	2.30 (5.1)	10 11 12 13 14 15 16	G N T M U W F	44.4 (1.748)	93 (3.661)	3.40 (7.5)	10 11 12 13 14 15 16	G N T M U W F
2SM_6	6 (0.37)	46 (1.811)	96.3 (3.791)	2.45 (5.4)			46 (1.811)	96.3 (3.791)	3.60 (7.8)		
2SM_8	8.5 (0.52)	48.1 (1.894)	100.5 (3.957)	2.60 (5.7)			48.1 (1.894)	100.5 (3.957)	3.70 (8.2)		
2SM_11	11 (0.67)	50.2 (1.976)	104.6 (4.118)	2.70 (6.0)			50.2 (1.976)	104.6 (4.118)	3.80 (8.4)		
2SM_14	14 (0.85)	52.7 (2.075)	109.6 (4.315)	2.80 (6.2)			52.7 (2.075)	109.6 (4.315)	3.90 (8.6)		
2SM_16	16.5 (1.01)	54.8 (2.157)	113.8 (4.480)	2.95 (6.5)			54.8 (2.157)	113.8 (4.480)	4.05 (8.9)		
2SM_19	19.5 (1.19)	57.3 (2.256)	118.8 (4.677)	3.10 (6.8)			57.3 (2.256)	118.8 (4.677)	4.20 (9.3)		
2SM_22	22.5 (1.37)	59.8 (2.354)	123.8 (4.874)	3.25 (7.2)			59.8 (2.354)	123.8 (4.874)	4.35 (9.6)		
2SM_26	26 (1.59)	62.7 (2.469)	129.6 (5.102)	3.40 (7.5)			62.7 (2.469)	129.6 (5.102)	4.50 (9.9)		

SEE PAGES 219/220 FOR PORT SIZES AVAILABLE

SEE PAGE 226 FOR PRICES

SAE A-OR

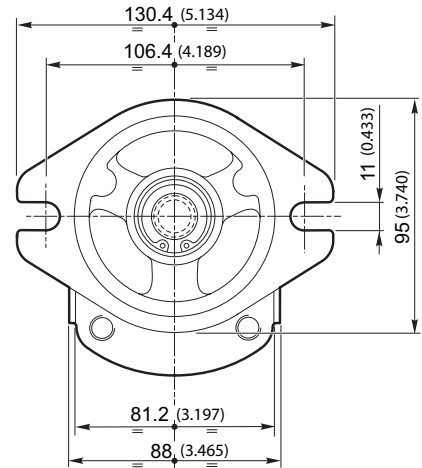
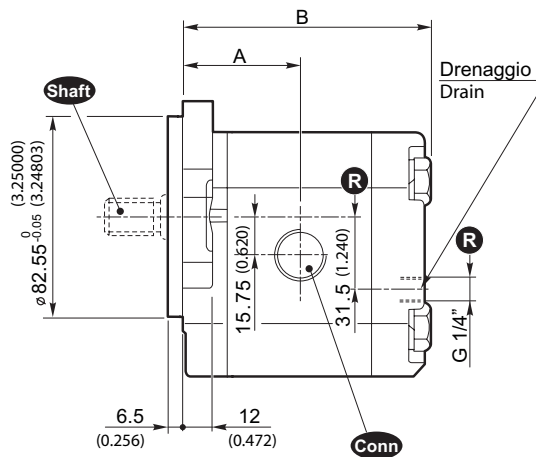


OR 2.62x75.87

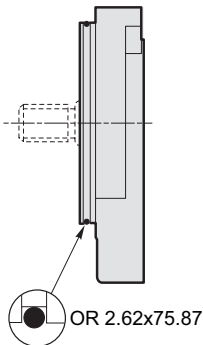
R Only for reversible motors

SAE A

Flange and cover in Aluminium



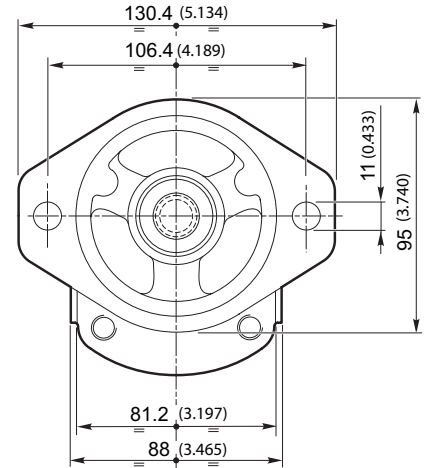
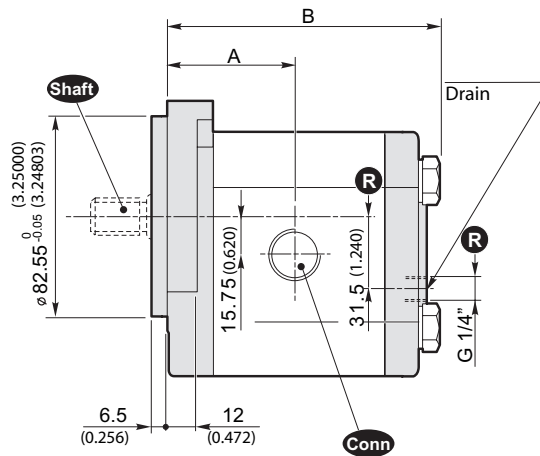
SAE A-OR



OR 2.62x75.87

SAE A

Flange and cover in Cast iron



SAE A, SAE A-OR (Aluminium)

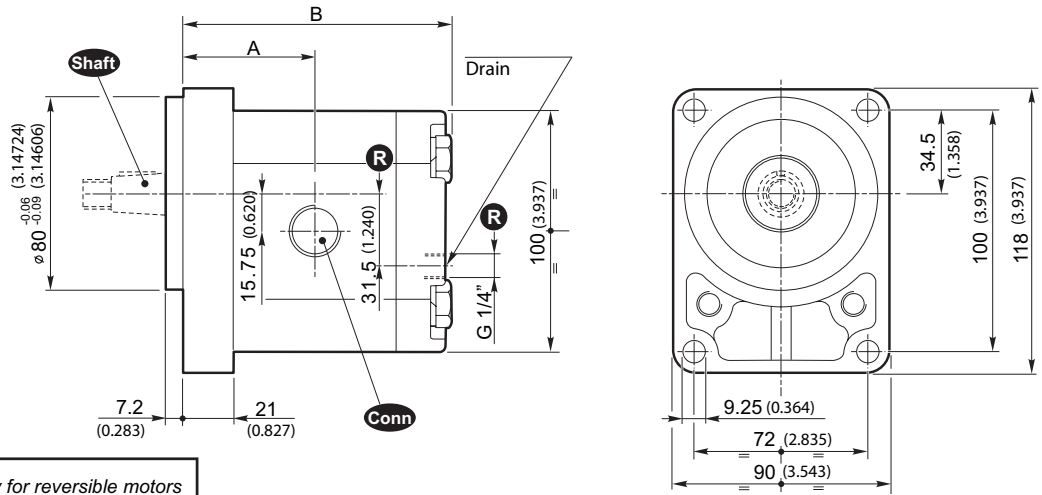
SAE A, SAE A-OR (Cast iron)

Size	Displacement [cm ³ /rev] (in ³ /rev)	Dimensions		Mass [Kg] (lbs)	Shaft	Conn	Dimensions		Mass [Kg] (lbs)	Shaft	Conn
		A [mm] (inch)	B [mm] (inch)				A [mm] (inch)	B [mm] (inch)			
2SM_4	4 (0.24)	44.4 (1.748)	93 (3.661)	2.30 (5.1)	10 11 12 13 14 15 16	G N T M U W F	44.4 (1.748)	93 (3.661)	3.40 (7.5)	10 11 12 13 14 15 16	G N T M U W F
2SM_6	6 (0.37)	46 (1.811)	96.3 (3.791)	2.45 (5.4)			46 (1.811)	96.3 (3.791)	3.55 (7.8)		
2SM_8	8.5 (0.52)	48.1 (1.894)	100.5 (3.957)	2.60 (5.7)			48.1 (1.894)	100.5 (3.957)	3.70 (8.2)		
2SM_11	11 (0.67)	50.2 (1.976)	104.6 (4.118)	2.70 (6.0)			50.2 (1.976)	104.6 (4.118)	3.80 (8.4)		
2SM_14	14 (0.85)	52.7 (2.075)	109.6 (4.315)	2.80 (6.2)			52.7 (2.075)	109.6 (4.315)	3.90 (8.6)		
2SM_16	16.5 (1.01)	54.8 (2.157)	113.8 (4.480)	2.95 (6.5)			54.8 (2.157)	113.8 (4.480)	4.05 (8.9)		
2SM_19	19.5 (1.19)	57.3 (2.256)	118.8 (4.677)	3.10 (6.8)			57.3 (2.256)	118.8 (4.677)	4.20 (9.3)		
2SM_22	22.5 (1.37)	59.8 (2.354)	123.8 (4.874)	3.25 (7.2)			59.8 (2.354)	123.8 (4.874)	4.35 (9.6)		
2SM_26	26 (1.59)	62.7 (2.469)	129.6 (5.102)	3.40 (7.5)			62.7 (2.469)	129.6 (5.102)	4.50 (9.9)		

SEE PAGES 219/220 FOR PORT SIZES AVAILABLE

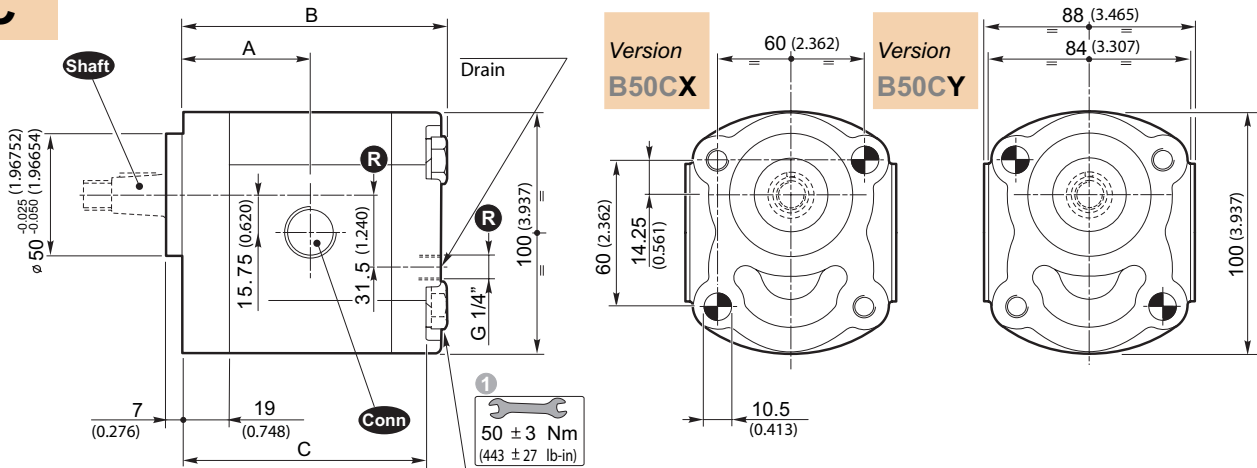
SEE PAGE 226 FOR PRICES

B80C



R Only for reversible motors

B50C



- 1 Tightening torque of screws: 443 ± 27 lb-in. Use screws type 10.9 - 12.9 UNI EN 20898/1.
The assembling of the pump should be effected with 2 screw studs type 10.9 - 12.9 pre-tighten at 354 ± 27 lb-in.
Fix the pump by self-locking nuts with tightening torque 443 ± 27 lb-in.

The screws kit for the pump assembling should be ordered separately.
Ordering code of fixing Kit:

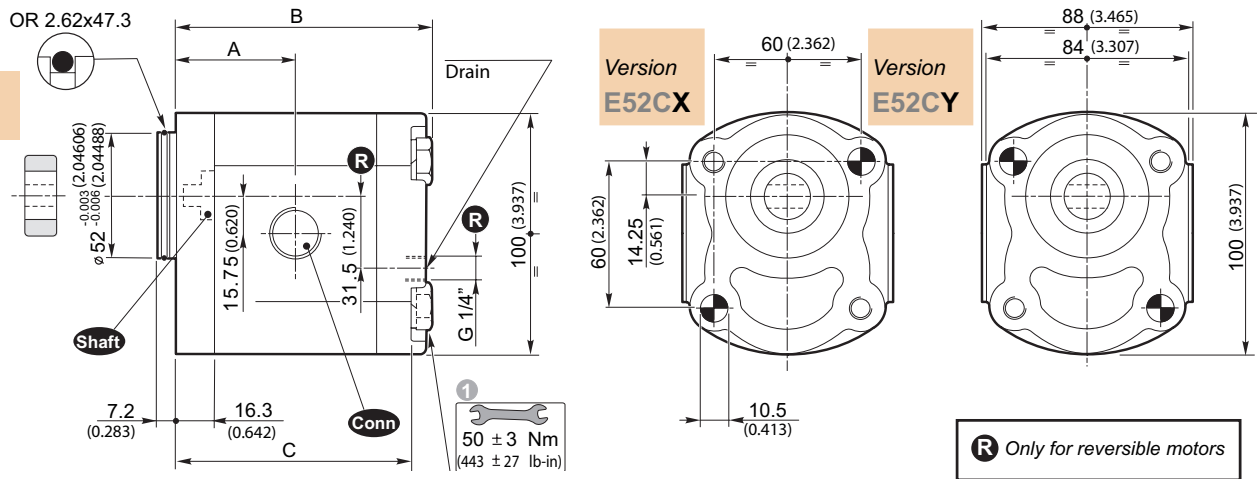
0029W + Length L (see table)

SEE PAGES 219/220 FOR PORT SIZES AVAILABLE

Size	Displacement [cm ³ /rev] (in ³ /rev)	B80C				Shaft	Conn	B50C				Shaft	Conn
		Dimensions		Mass [Kg] (lbs)	Dimensions				Mass [Kg] (lbs)				
		A [mm] (inch)	B [mm] (inch)		A [mm] (inch)			B [mm] (inch)		C [mm] (inch)	L 1 [mm] (inch)		
2SM A4	4 (0.24)	46.4 (1.827)	95 (3.740)	2.30 (5.1)	10 11 12 13 14 15 16	G N T M U V F	44.4 (1.748)	93 (3.661)	84 (3.307)	105 (4.134)	2.30 (5.1)	10 11 12 13 14 15 16	G N T M U V F
2SM A6	6 (0.37)	48 (1.890)	98.3 (3.870)	2.45 (5.4)			46 (1.811)	96.3 (3.791)	87.3 (3.437)	105 (4.134)	2.45 (5.4)		
2SM A8	8.5 (0.52)	50.1 (1.972)	102.5 (4.035)	2.60 (5.7)			48.1 (1.894)	100.5 (3.957)	91.5 (3.602)	110 (4.331)	2.60 (5.7)		
2SM A11	11 (0.67)	52.2 (2.055)	106.6 (4.197)	2.70 (6.0)			50.2 (1.976)	104.6 (4.118)	95.6 (3.764)	115 (4.528)	2.70 (6.0)		
2SM A14	14 (0.85)	54.7 (2.154)	111.6 (4.394)	2.80 (6.2)			52.7 (2.075)	109.6 (4.315)	100.6 (3.961)	120 (4.724)	2.80 (6.2)		
2SM A16	16.5 (1.01)	56.8 (2.236)	115.8 (4.559)	2.95 (6.5)			54.8 (2.157)	113.8 (4.480)	104.8 (4.126)	125 (4.921)	2.95 (6.5)		
2SM A19	19.5 (1.19)	59.3 (2.335)	120.8 (4.756)	3.10 (6.8)			57.3 (2.256)	118.8 (4.677)	109.8 (4.323)	130 (5.118)	3.10 (6.8)		
2SM A22	22.5 (1.37)	61.8 (2.433)	125.8 (4.953)	3.25 (7.2)			59.8 (2.354)	123.8 (4.874)	114.8 (4.520)	135 (5.315)	3.25 (7.2)		
2SM A26	26 (1.59)	64.7 (2.547)	131.6 (5.181)	3.40 (7.5)			62.7 (2.469)	129.6 (5.102)	120.6 (4.748)	140 (5.512)	3.40 (7.5)		

SEE PAGE 226 FOR PRICES

E52C



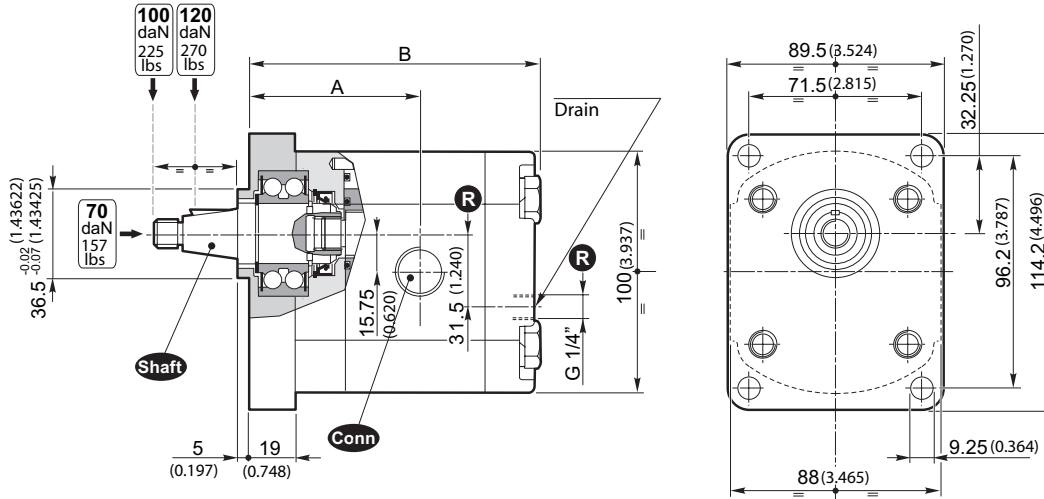
- 1 Tightening torque of screws: 443 ± 27 lb-in. Use screws type 10.9 - 12.9 UNI EN 20898/1.
 The assembling of the pump should be effected with 2 screw studs type 10.9 - 12.9 pre-tighten at 354 ± 27 lb-in.
 Fix the pump by self-locking nuts with tightening torque 443 ± 27 lb-in.

The screws kit for the fixing of the pump should be ordered separately.
 Ordering code of fixing Kit:

0029W + Length L (see table)

E52C									
Size	Displacement [cm ³ /rev] [in ³ /rev]	Dimensions				Mass [Kg] [lbs]	Shaft	Conn	
		A [mm] [inch]	B [mm] [inch]	C [mm] [inch]	L 1 [mm] [inch]				
2SM A4	4 (0.24)	41.7 (1.642)	90.3 (3.555)	81.3 (3.201)	100 (3.937)	2.30 (5.1)	17	G N T M U W F	
2SM A6	6 (0.37)	43.3 (1.705)	93.6 (3.685)	84.6 (3.331)	105 (4.134)	2.45 (5.4)			
2SM A8	8.5 (0.52)	45.4 (1.787)	97.8 (3.850)	88.8 (3.496)	110 (4.331)	2.60 (5.7)			
2SM A11	11 (0.67)	47.5 (1.870)	101.9 (4.012)	92.9 (3.657)	115 (4.528)	2.70 (6.0)			
2SM A14	14 (0.85)	50 (1.969)	106.9 (4.209)	97.9 (3.854)	120 (4.724)	2.80 (6.2)			
2SM A16	16.5 (1.01)	52.1 (2.051)	111.1 (4.374)	102.1 (4.020)	120 (4.724)	2.95 (6.5)			
2SM A19	19.5 (1.19)	54.6 (2.150)	116.1 (4.571)	107.1 (4.217)	125 (4.921)	3.10 (6.8)			
2SM A22	22.5 (1.37)	57.1 (2.248)	121.1 (4.768)	112.1 (4.413)	130 (5.118)	3.25 (7.2)			
2SM A26	26 (1.59)	60 (2.362)	126.9 (4.996)	117.9 (4.642)	140 (5.512)	3.40 (7.5)			

SEE PAGES 219/220 FOR PORT SIZES AVAILABLE



R Only for reversible motors

Version to use with axial and/or radial loads

SUPP.STND

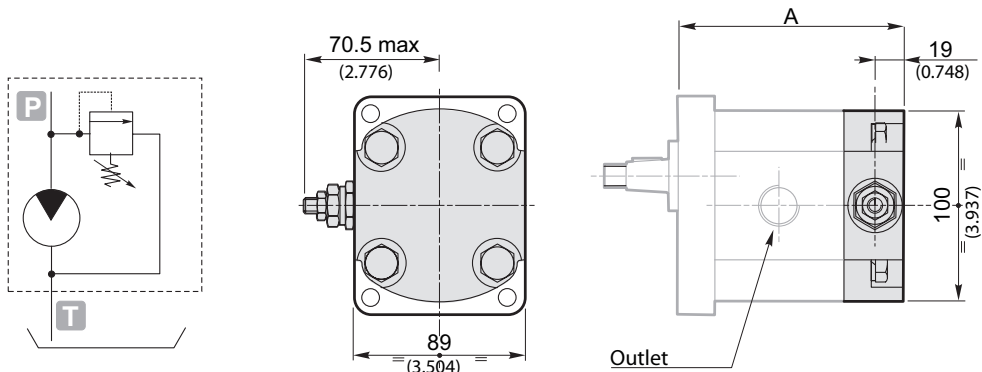
Size	Displacement [cm ³ /rev] [in ³ /rev]	Dimensions		Mass [Kg] [lbs]	Shaft	Conn
		A [mm] [inch]	B [mm] [inch]			
2SM A4	4 (0.24)	64.4 (2.535)	113 (4.449)	2.80 (6.2)	10	G N T M U W F
2SM A6	6 (0.37)	66 (2.598)	116.3 (4.579)	2.88 (6.4)		
2SM A8	8.5 (0.52)	68.1 (2.681)	120.5 (4.744)	3.00 (6.6)		
2SM A11	11 (0.67)	70.2 (2.764)	124.6 (4.906)	3.12 (6.9)		
2SM A14	14 (0.85)	72.7 (2.862)	129.6 (5.102)	3.27 (7.2)		
2SM A16	16.5 (1.01)	74.8 (2.945)	133.8 (5.268)	3.39 (7.5)		
2SM A19	19.5 (1.19)	77.3 (3.043)	138.8 (5.465)	3.53 (7.8)		
2SM A22	22.5 (1.37)	79.8 (3.142)	143.8 (5.661)	3.67 (8.1)		
2SM A26	26 (1.59)	82.7 (3.256)	149.6 (5.890)	3.84 (8.5)		

SEE PAGES 219/220 FOR PORT SIZES AVAILABLE

SEE PAGE 226 FOR PRICES

VLP- I (N)

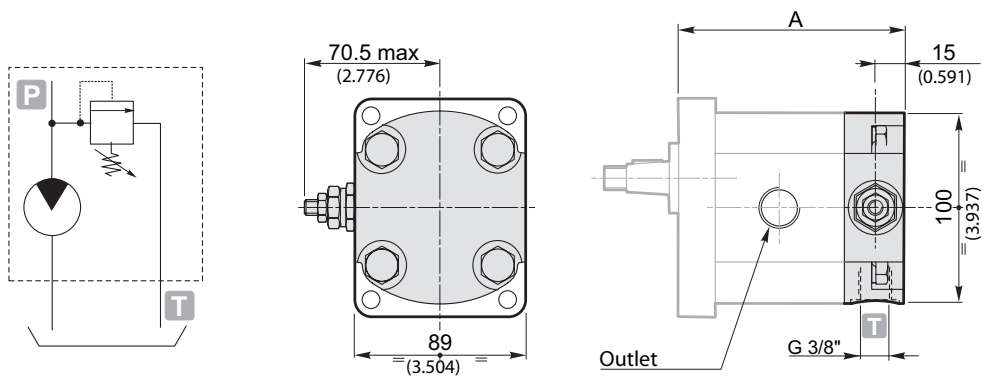
Pressure relief valve with internal exhaust



	A		
	Standard SAE A B50C	B80C	E52C
2SM A4	104.8 (4.126)	106.8 (4.205)	102.1 (4.020)
2SM A6	108.1 (4.256)	110.1 (4.335)	105.4 (4.150)
2SM A8	112.3 (4.421)	114.3 (4.500)	109.6 (4.315)
2SM A11	116.4 (4.583)	118.4 (4.661)	113.7 (4.476)
2SM A14	121.4 (4.780)	123.4 (4.858)	118.7 (4.673)
2SM A16	125.6 (4.945)	127.6 (5.024)	122.9 (4.839)
2SM A19	130.6 (5.142)	132.6 (5.220)	127.9 (5.035)
2SM A22	135.6 (5.339)	137.6 (5.417)	132.9 (5.232)
2SM A26	141.4 (5.567)	143.4 (5.646)	138.7 (5.461)

VLP- E (N)

Pressure relief valve with external exhaust



	A		
	Standard SAE A B50C	B80C	E52C
2SM A4	100.8 (3.969)	102.8 (4.047)	98.1 (3.862)
2SM A6	104.1 (4.098)	106.1 (4.177)	101.4 (3.992)
2SM A8	108.3 (4.264)	110.3 (4.343)	105.6 (4.157)
2SM A11	112.4 (4.425)	114.4 (4.504)	109.7 (4.319)
2SM A14	117.4 (4.622)	119.4 (4.701)	114.7 (4.516)
2SM A16	121.6 (4.787)	123.6 (4.866)	118.9 (4.681)
2SM A19	126.6 (4.984)	128.6 (5.063)	123.9 (4.878)
2SM A22	131.6 (5.181)	133.6 (5.260)	128.9 (5.075)
2SM A26	137.4 (5.409)	139.4 (5.488)	134.7 (5.303)

Warning.

The pressure relief valve can be applied by substituting the rear cover.
It is supplied only with aluminium flange and cover.
The showed motors are clockwise rotation.

The opening of the pressure relief valve should carry out for times not over 10" each minute to avoid the overheating of the pump.

SEE PAGES 219/220 FOR PORT SIZES AVAILABLE

Example of ordering code

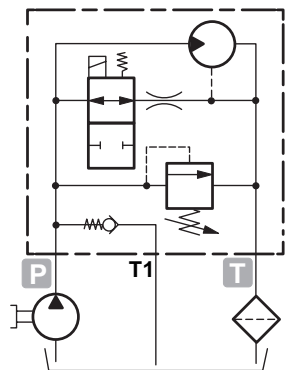
2SM	A	14	D	SAE A	-	10	G	(VT)	VLP-I	(N)	
VLP-I	Cover with VLP							VLP-I (at internal exhaust) VLP-E (at external exhaust)			
(N)	Spring type							B - N - R (See table)			

		Spring type		
		B	N	R
		white spring	black spring	red spring
Calibration fields*	[bar] (psi)	10 ÷ 100 (145 ÷ 1450)	30 ÷ 280 (435 ÷ 4060)	80 ÷ 380 (1160 ÷ 5510)

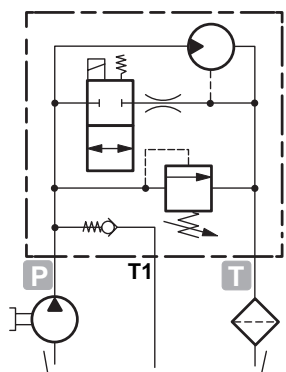
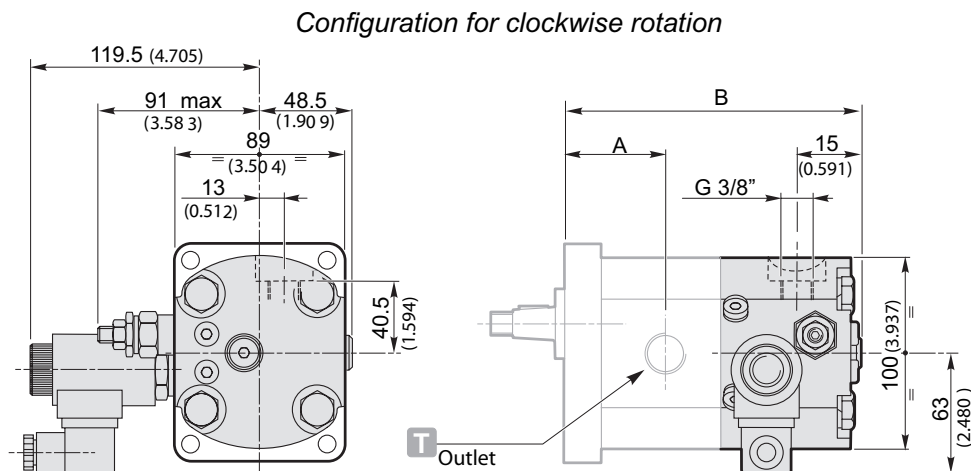
* Without setting request, it will be considered standard (black spring: 2175 psi).

SEE PAGE 226 FOR PRICES

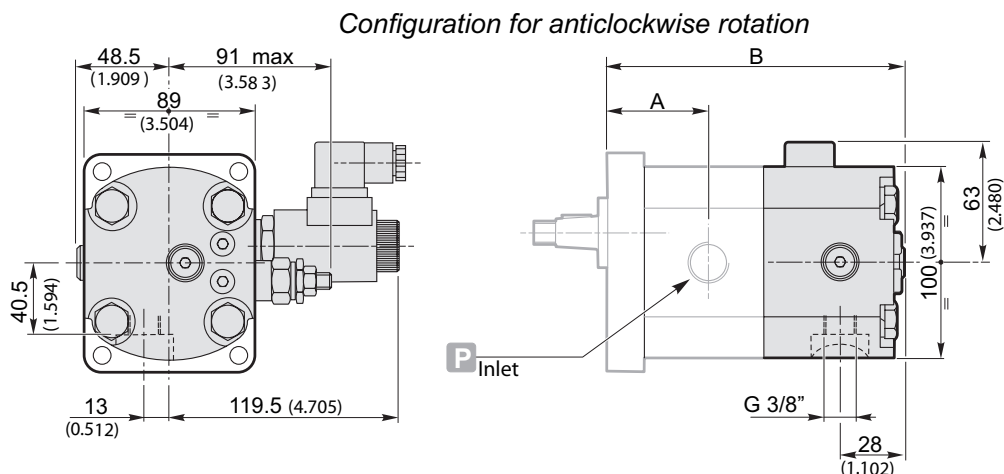
Two speed unidirectional motors with VLP pressure relief valve



Electro Valve normally open (NA)



Electro Valve normally closed (NC)



	2SM A4	2SM A6	2SM A8	2SM A11	2SM A14	2SM A16	2SM A19	2SM A22	2SM A26
A	44.4 (1.748)	46 (1.811)	48.1 (1.894)	50.2 (1.976)	52.7 (2.075)	54.8 (2.157)	57.3 (2.256)	59.8 (2.354)	62.7 (2.469)
B	142.3 (5.602)	145.6 (5.732)	149.8 (5.898)	153.9 (6.059)	158.9 (6.256)	163.1 (6.421)	168.1 (6.618)	173.1 (6.815)	182 (7.165)

Example of ordering code

2SM	A14	D	NA	(24VDC)	VLP	(N)	SAE A	-	10	G
NA	NA = Normally open NC = Normally closed					NA = Normally open NC = Normally closed				
24VDC	Electromagnet voltage					12 - 24 - 48 V. DC 24 - 48 - 110 - 220 V. AC (50 Hz)				
VLP	Cover with VLP									
(N)	Spring type					B - N - R (See table)				

N.B.
Only motors with flange and cover in Aluminium

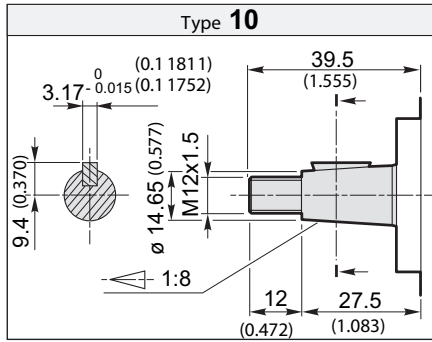
		Spring type		
		B	N	R
		white spring	black spring	red spring
Calibration fields*	[bar] (psi)	10 ÷ 100 (145 ÷ 1450)	30 ÷ 280 (435 ÷ 4060)	80 ÷ 380 (1160 ÷ 5510)

SEE PAGES 219/220 FOR PORT SIZES AVAILABLE

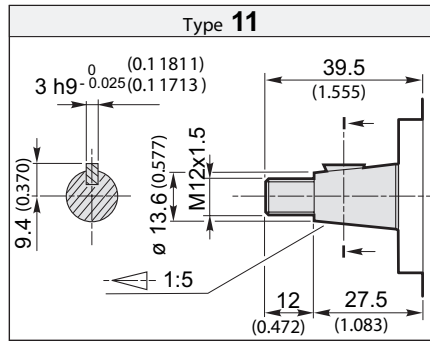
* Without setting request, it will be considered standard (black spring: 2175 psi).

SEE PAGE 226 FOR PRICES

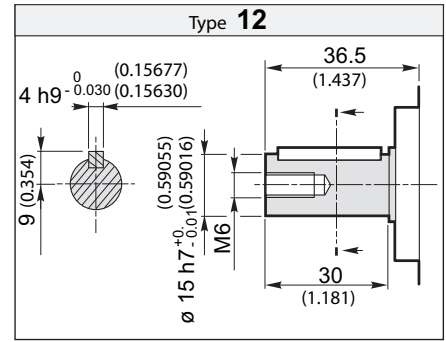
MOTORS GROUP 2 • AVAILABLE SHAFTS



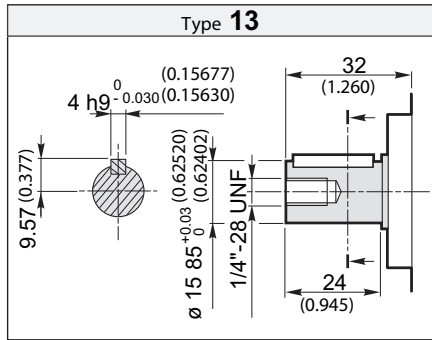
Torque 98 Nm / Torque 72.3 ft-lbs



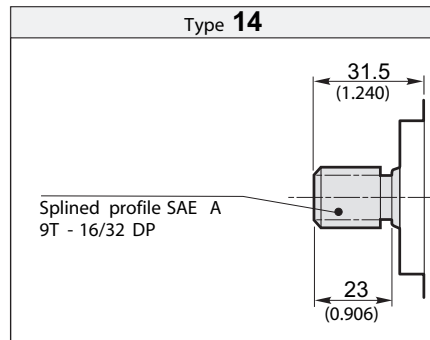
Torque 98 Nm / Torque 72.3 ft-lbs



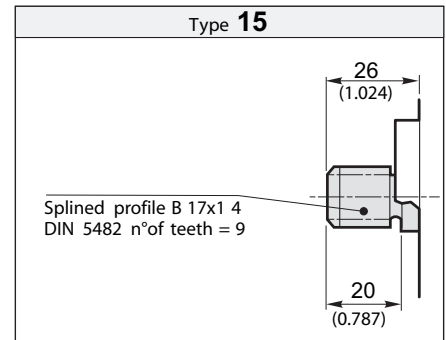
Torque 98 Nm / Torque 72.3 ft-lbs



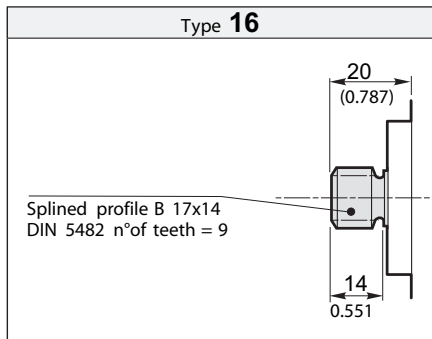
Torque 98 Nm / Torque 72.3 ft-lbs



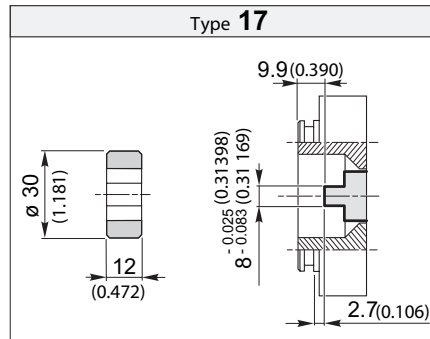
Torque 98 Nm / Torque 72.3 ft-lbs



Torque 98 Nm / Torque 72.3 ft-lbs

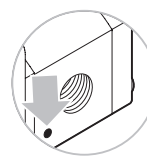
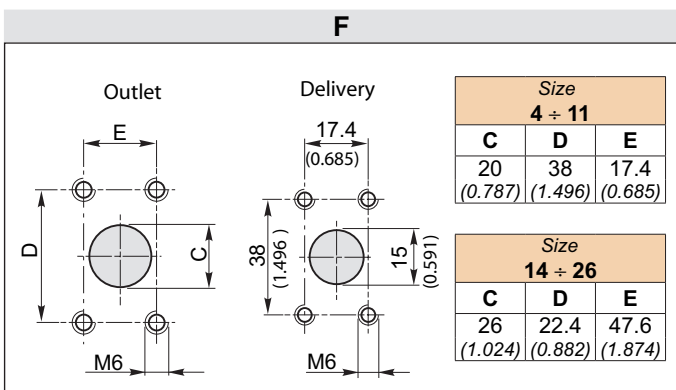
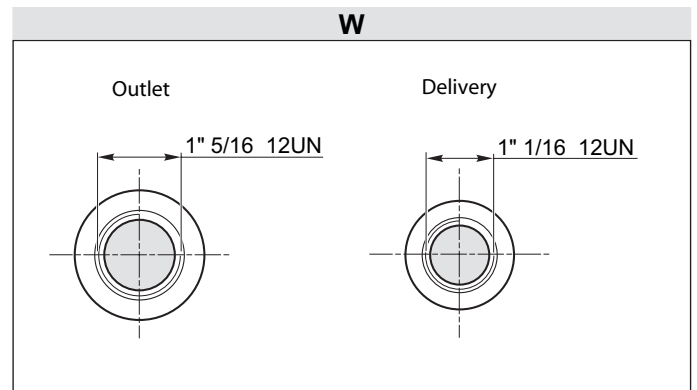
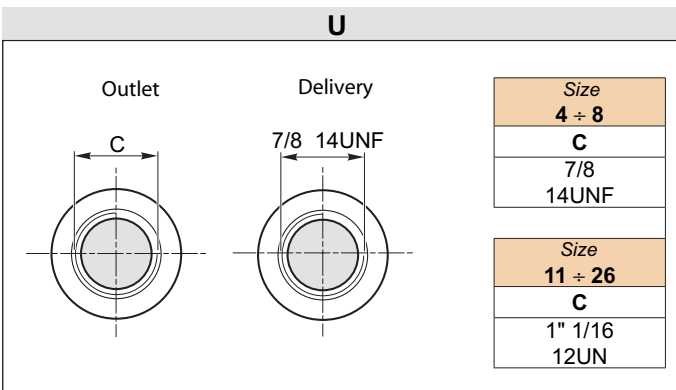
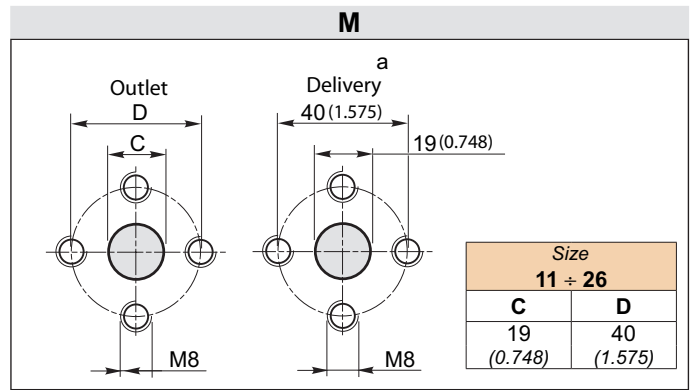
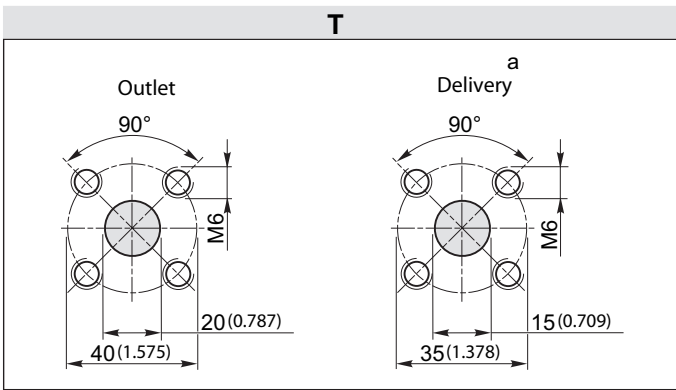
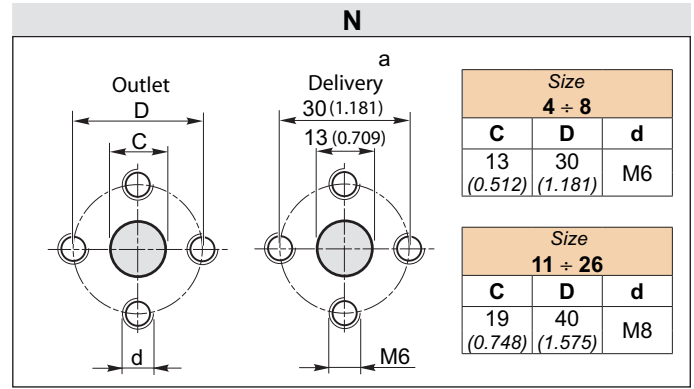
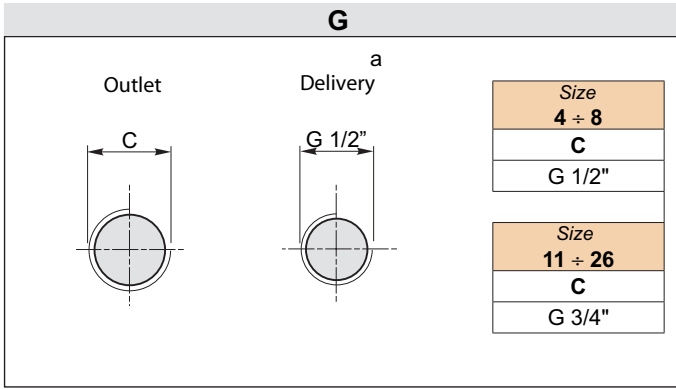


Torque 98 Nm / Torque 72.3 ft-lbs



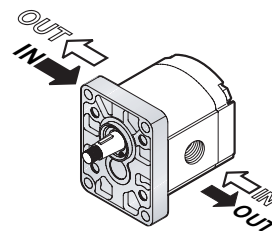
Torque 70 Nm / Torque 51.6 ft-lbs

SEE PAGE 226 FOR PRICES



The sign on the body identifies the **outlet side** for the motors.

Connections positions

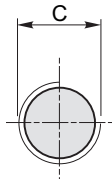


Rotation	
D	S

SEE PAGE 226 FOR PRICES

G

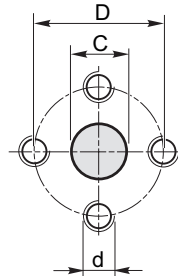
Delivery / Outlet



Size	
4 ÷ 8	
C	
G 1/2"	
Size	
11 ÷ 26	
C	
G 3/4"	

N

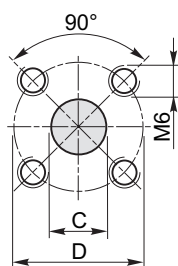
Delivery / Outlet



Size		
4 ÷ 8		
C	D	d
13 (0.512)	30 (1.181)	M6
Size		
11 ÷ 26		
C	D	d
19 (0.748)	40 (1.575)	M8

T

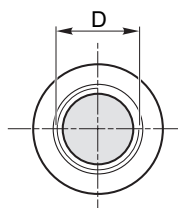
Delivery / Outlet



Size	
4 ÷ 8	
C	D
15 (0.591)	35 (1.378)
Size	
11 ÷ 26	
C	D
20 (0.787)	40 (1.575)

U

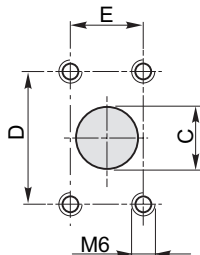
Delivery / Outlet



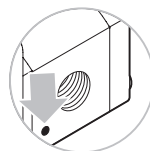
Size	
4 ÷ 8	
D	
7/8	
14UNF	
Size	
11 ÷ 26	
D	
1" 1/16	
12UN	

F

Delivery / Outlet

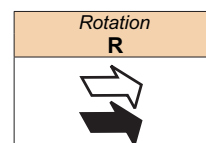
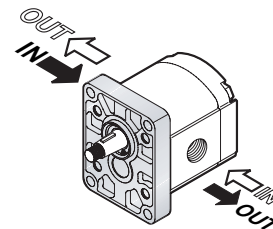


Size		
4 ÷ 11		
C	D	E
20 (0.787)	38 (1.496)	17.4 (0.685)
Size		
14 ÷ 26		
C	D	E
26 (1.024)	22.4 (0.882)	47.6 (1.874)

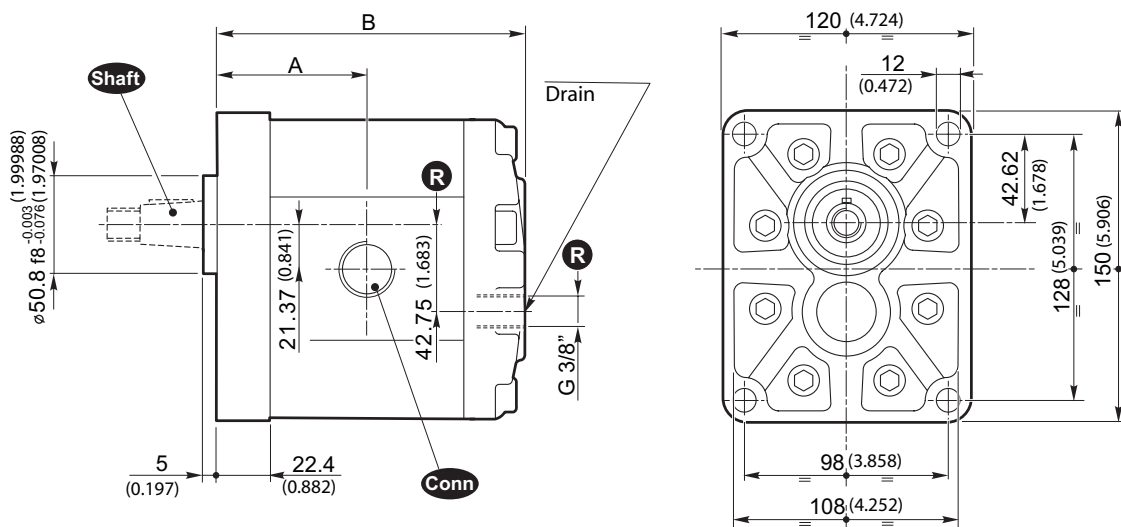


Any sign on the body in reversible motors is not considered.

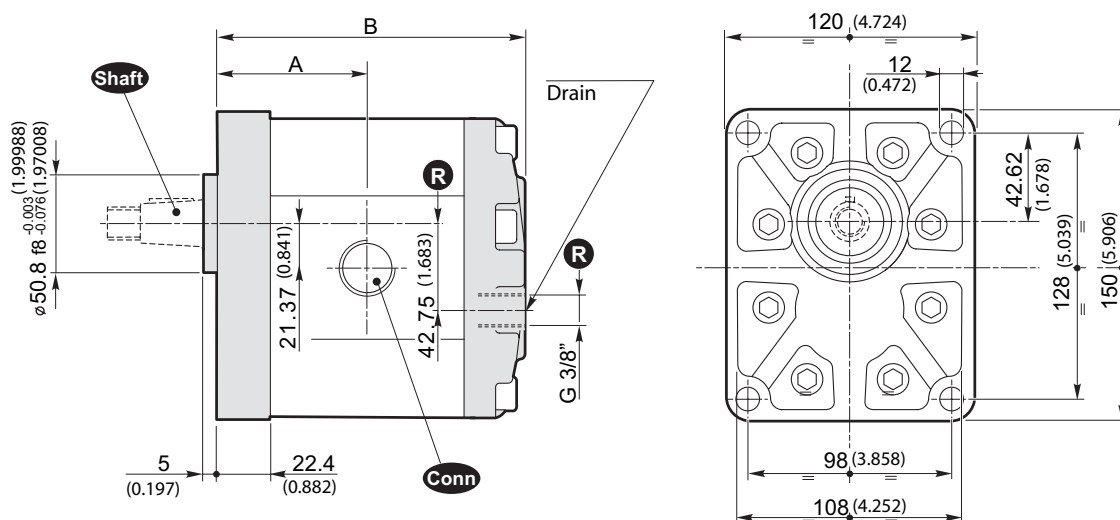
Connections positions



Flange and cover in Aluminium



Flange and cover in Cast iron



R Only for reversible motors

Size	Displacement [cm ³ /rev] (in ³ /rev)	STND (Aluminium)					STND (Cast iron)				
		Dimensions		Mass	Shaft	Conn	Dimensions		Mass	Shaft	Conn
		A	B				A	B			
		[mm] (inch)	[mm] (inch)	[Kg] (lbs)			[mm] (inch)	[mm] (inch)	[Kg] (lbs)		
3SM 19	19 (1.16)	62.4 (2.457)	128.3 (5.051)	5.23 (11.5)	10 13 14	G N T W F	62.4 (2.457)	128.3 (5.051)	7.53 (16.6)	10 13 14	G N T W F
3SM 22	22.3 (1.36)	63.9 (2.516)	131.3 (5.169)	5.36 (11.8)			63.9 (2.516)	131.3 (5.169)	7.66 (16.9)		
3SM 29	29.3 (1.79)	66.9 (2.634)	137.3 (5.406)	5.64 (12.4)			66.9 (2.634)	137.3 (5.406)	7.94 (17.5)		
3SM 33	32.9 (2.01)	68.4 (2.693)	140.3 (5.524)	5.78 (12.7)			68.4 (2.693)	140.3 (5.524)	8.08 (17.8)		
3SM 36	36.4 (2.22)	69.9 (2.752)	143.3 (5.642)	5.91 (13.0)			69.9 (2.752)	143.3 (5.642)	8.21 (18.1)		
3SM 44	43.5 (2.65)	72.9 (2.870)	149.3 (5.878)	6.19 (13.7)			72.9 (2.870)	149.3 (5.878)	8.49 (18.7)		
3SM 52	51.7 (3.15)	76.4 (3.008)	156.3 (6.154)	6.50 (14.3)			76.4 (3.008)	156.3 (6.154)	8.80 (19.4)		
3SM 62	61.1 (3.73)	80.4 (3.165)	164.3 (6.469)	6.87 (15.1)			80.4 (3.165)	164.3 (6.469)	9.17 (20.2)		

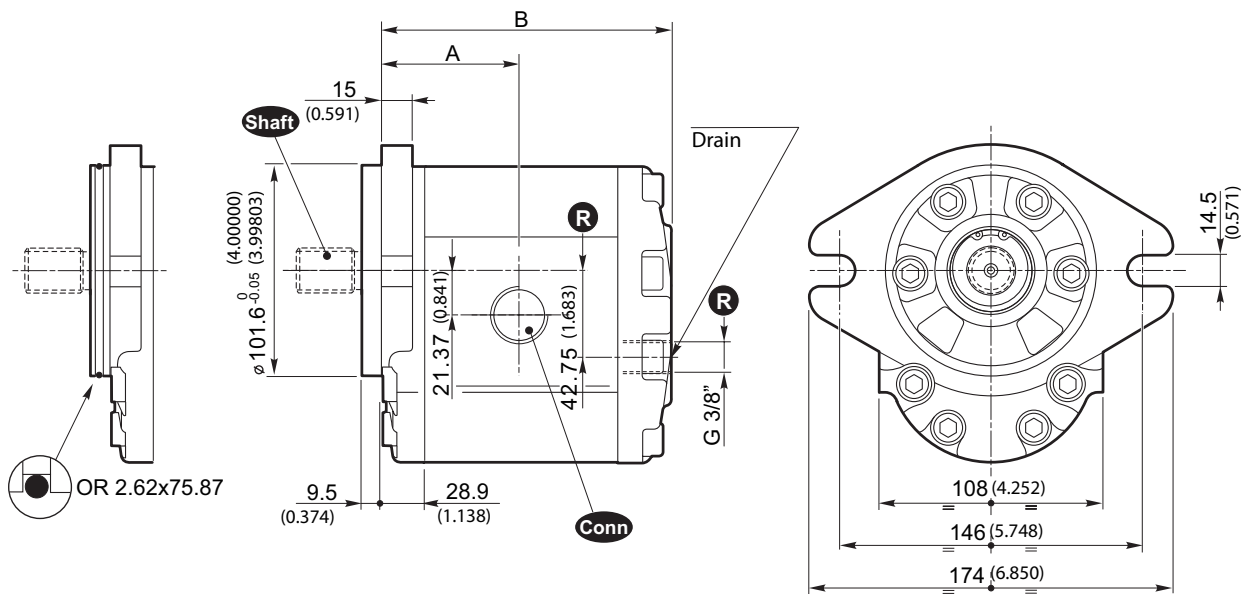
SEE PAGES 219/220 FOR PORT SIZES AVAILABLE

SEE PAGE 226 FOR PRICES

SAE B-OR

SAE B

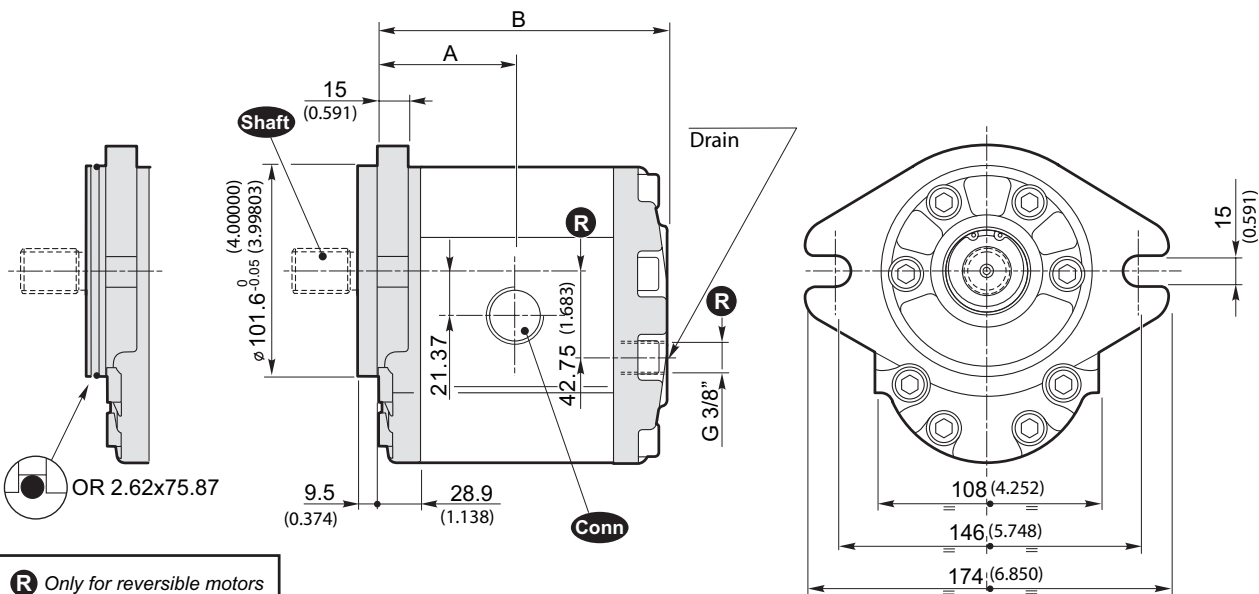
Flange and cover in Aluminium



SAE B-OR

SAE B

Flange and cover in Cast iron



R Only for reversible motors

SAE B, SAE B-OR (Aluminium)

SAE B, SAE B-OR (Cast iron)

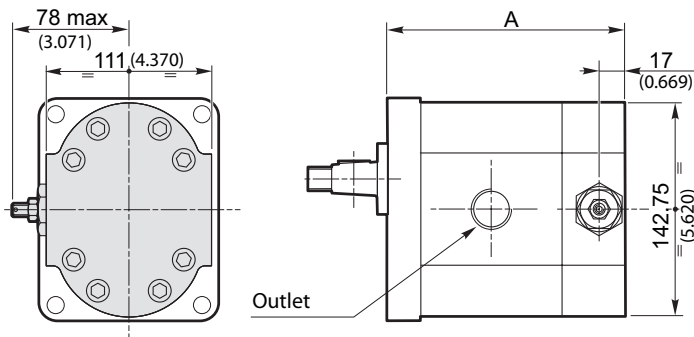
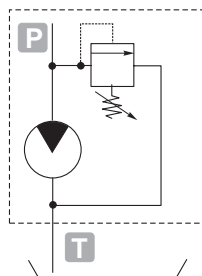
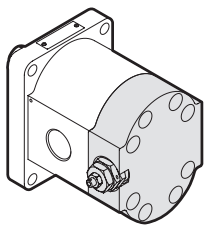
Size	Displacement [cm ³ /rev] [in ³ /rev]	Dimensions		Mass [Kg] [lbs]	Shaft	Conn	Dimensions		Mass [Kg] [lbs]	Shaft	Conn
		A [mm] [inch]	B [mm] [inch]				A [mm] [inch]	B [mm] [inch]			
3SM 19	19 (1.16)	59.4 (2.339)	125.3 (4.933)	5.23 (11.5)	10 13 14	G N T W F	59.4 (2.339)	125.3 (4.933)	7.59 (16.7)	10 13 14	G N T W F
3SM 22	22.3 (1.36)	60.9 (2.398)	128.3 (5.051)	5.36 (11.8)			60.9 (2.398)	128.3 (5.051)	7.72 (17.0)		
3SM 29	29.3 (1.79)	63.9 (2.516)	134.3 (5.287)	5.64 (12.4)			63.9 (2.516)	134.3 (5.287)	8.00 (17.6)		
3SM 33	32.9 (2.01)	65.4 (2.575)	137.3 (5.406)	5.78 (12.7)			65.4 (2.575)	137.3 (5.406)	8.14 (18.0)		
3SM 36	36.4 (2.22)	66.9 (2.634)	140.3 (5.524)	5.91 (13.0)			66.9 (2.634)	140.3 (5.524)	8.27 (18.2)		
3SM 44	43.5 (2.65)	69.9 (2.752)	146.3 (5.760)	6.19 (13.7)			69.9 (2.752)	146.3 (5.760)	8.55 (18.9)		
3SM 52	51.7 (3.15)	73.4 (2.890)	153.3 (6.035)	6.50 (14.3)			73.4 (2.890)	153.3 (6.035)	8.86 (19.5)		
3SM 62	61.1 (3.73)	77.4 (3.047)	161.3 (6.350)	6.87 (15.1)			77.4 (3.047)	161.3 (6.350)	9.23 (20.4)		

SEE PAGES 219/220 FOR PORT SIZES AVAILABLE

SEE PAGE 226 FOR PRICES

VLP- I (N)

Pressure relief valve with internal exhaust



	A		
	Standard	SAE AA	E32 BX E32 CX
3SM 19	127.3 (5.012)	129.3 (5.091)	124.6 (4.906)
3SM 22	130.3 (5.130)	132.3 (5.209)	127.6 (5.024)
3SM 29	136.3 (5.366)	138.3 (5.445)	133.6 (5.260)
3SM 33	139.3 (5.484)	141.3 (5.563)	136.6 (5.378)
3SM 36	142.3 (5.602)	144.3 (5.681)	139.6 (5.496)
3SM 44	148.3 (5.839)	150.3 (5.917)	145.6 (5.732)
3SM 52	155.3 (6.114)	157.3 (6.193)	152.6 (6.008)
3SM 62	163.3 (6.429)	165.3 (6.508)	160.6 (6.323)

Warning.

The pressure relief valve can be applied by substituting the rear cover.

It is supplied only with aluminium flange and cover.

The showed motor is clockwise rotation.

The opening of the pressure relief valve should carry out for times not over 7" each minute to avoid the overheating of the pump.

SEE PAGES 219/220 FOR PORT SIZES AVAILABLE

Example of ordering code

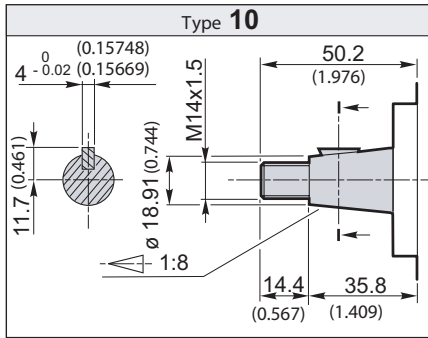
3SM	22	D	SAE B	-	10	G	(VT)	VLP-I	(N)
-----	----	---	-------	---	----	---	------	-------	-----

VLP-I	Cover with VLP	VLP-I (at internal exhaust)
(N)	Spring type	B - N - R (See table)

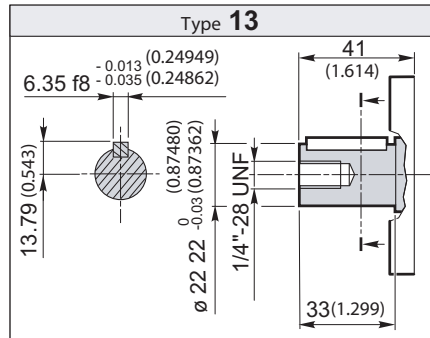
		Spring type		
		B	N	R
		white spring	black spring	red spring
Calibration fields*	[bar] (psi)	10 ÷ 100 (145 ÷ 1450)	30 ÷ 280 (435 ÷ 4060)	80 ÷ 380 (1160 ÷ 5510)

* Without setting request, it will be considered standard (black spring: 2175 psi).

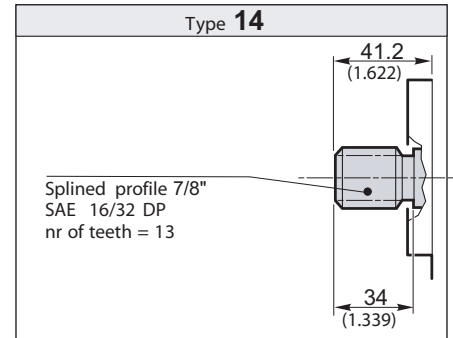
MOTORS GROUP 3 • AVAILABLE SHAFTS



Torque 240 Nm / Torque 177 ft-lbs

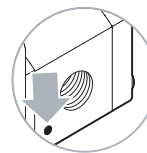
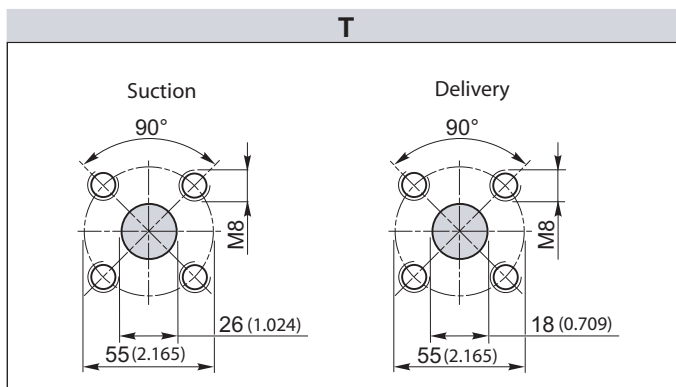
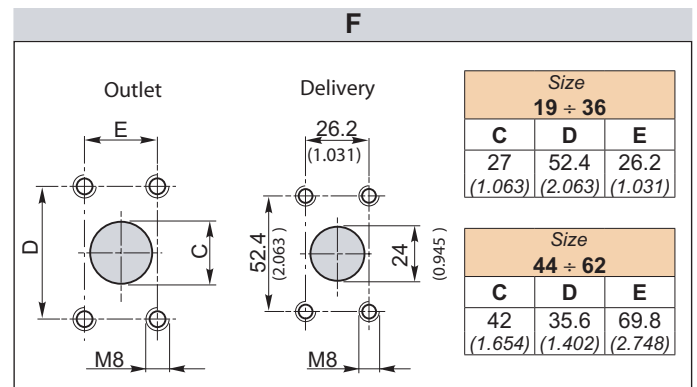
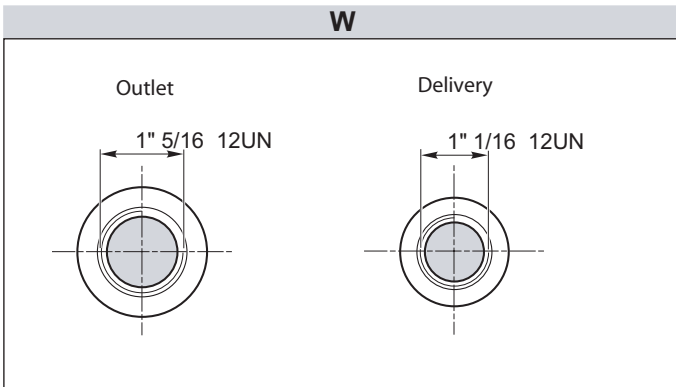
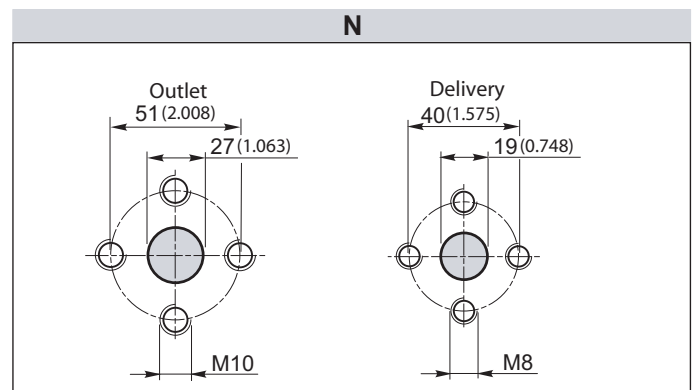
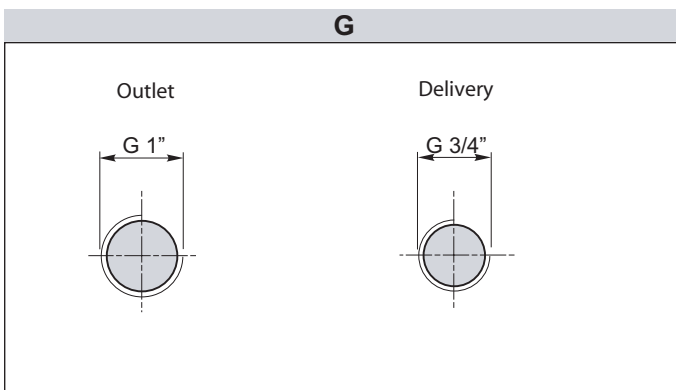


Torque 240 Nm / Torque 177 ft-lbs

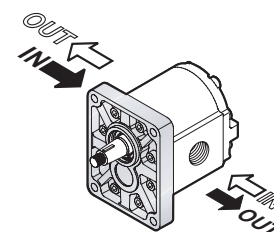


Torque 240 Nm / Torque 177 ft-lbs

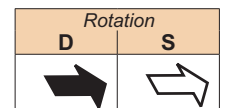
PORT CONNECTIONS for D-S motors



The sign on the body identifies the **outlet side** for the motors.



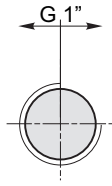
Connections positions



SEE PAGE 226 FOR PRICES

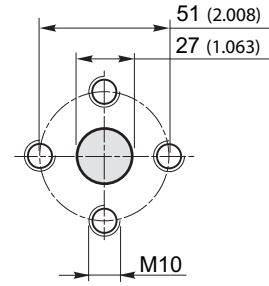
G

Outlet - Delivery



N

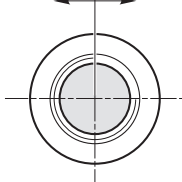
Outlet - Delivery



W

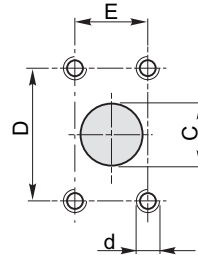
Outlet

1" 5/16 12UN



F

Outlet

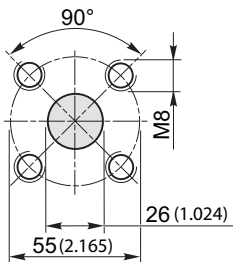


Size 19 ÷ 36			
C	D	E	d
27 (1.063)	52.4 (2.063)	26.2 (1.031)	M8

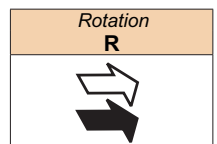
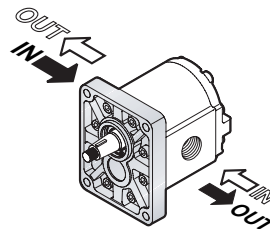
Size 44 ÷ 62			
C	D	E	d
32 (1.260)	58.7 (2.311)	30.2 (1.189)	M10

T

Outlet - Delivery



Connections positions



GROUP 1 GEAR PUMPS + GEAR MOTORS PRICE LIST

DESCRIPTION	4 BOLT FLANGE STANDARD	FLANGE MINI-POWERPACK	FLANGE E32C FLANGE E32B	2 BOLT FLANGE SAE AA
PUMP 1SPA 0,9	£155.63	£155.63	£163.40	£163.40
PUMP 1SPA 1,2	£155.63	£155.63	£163.40	£163.40
PUMP 1SPA 1,6	£155.63	£155.63	£163.40	£163.40
PUMP 1SPA 2,0	£155.63	£155.63	£163.40	£163.40
PUMP 1SPA 2,5	£159.27	£159.27	£167.23	£167.23
PUMP 1SPA 3,2	£159.27	£159.27	£167.23	£167.23
PUMP 1SPA 3,7	£159.27	£159.27	£167.23	£167.23
PUMP 1SPA 4,2	£159.27	£159.27	£167.23	£167.23
PUMP 1SPA 5,0	£163.62	£163.62	£171.80	£171.80
PUMP 1SPA 6,3	£163.62	£163.62	£171.80	£171.80
PUMP 1SPA 7,8	£168.53	£168.53	£176.95	£176.95
PUMP 1SPA 9,8	£174.41	£174.41	£182.27	£182.27

SEAL FOR HIGHT PRESSURE (K)	£5.45
STND and SAE AA PUMP with OR	£5.34
SHAFT SEAL (EB32C)	£5.73
SHAFT SEAL (H)	£6.91
VITON SEAL	£28.37
END-COVER with MAIN RELIEF VALVE INTERNAL EXHAUST	£62.06

KIT MULTIPLE PUMP 1P + 1P Standard	£74.17
DISJUNCTOR VALVE ON INTERMEDIATE FLANGE	£200.25
COMMON SUCTION (1st 2nd and 3rd pump)	additional price by 5% on multiple pump

GROUP 2 GEAR PUMPS + GEAR MOTORS PRICE LIST

FOR TRIPLE AND QUADRUPLE KEEP ADDING
 'KIT MULTIPLE PUMP'
 • TANDEM = 1 KIT • TRIPLE = 2 KITS
 • QUADRUPLE = 3 KITS

DESCRIPTION	4 BOLT ALUMINIUM FLANGE STANDARD	ALUMINIUM FLANGE B50-B80-E52-M52-SAEA	ALUMINIUM FLANGE PRKS	4 BOLT CAST-IRON FLANGE STANDARD	2 BOLT CAST-IRON FLANGE SAE A
PUMP 2 SP 4	£192.72	£202.17	£233.73	£218.18	£227.61
PUMP 2 SP 6	£192.72	£202.17	£233.73	£218.18	£227.61
PUMP 2 SP 8	£192.72	£202.17	£233.73	£218.18	£227.61
PUMP 2 SP 11	£198.54	£202.17	£239.54	£224.71	£234.17
PUMP 2 SP 14	£198.54	£202.17	£239.54	£224.71	£234.17
PUMP 2 SP 16	£198.54	£202.17	£239.54	£224.71	£234.17
PUMP 2 SP 19	£205.08	£215.26	£256.10	£230.54	£240.72
PUMP 2 SP 22	£205.08	£215.26	£256.10	£230.54	£240.72
PUMP 2 SP 26	£210.16	£220.34	£256.10	£235.28	£245.80

SUPPORT INCORPORATED IN THE FLANGE	£90.89
SUPPORT Ø 50,8 - shaft Ø 22	£100.48
FLANGE WITH BEARING (for B50C and B80C)	£33.45
FLANGE WITH O-Ring	£7.99
SHAFT SEAL (H)	£9.45
SEAL FOR HIGH PRESSURE (K) - 30 bar	£5.45
SEAL FOR HIGH PRESSURE (KK) - 100 bar	£10.94
SHAFT SEAL (MC52CX)	£6.35
SPECIAL KEY draw.25053	£5.63
VITON SEAL	£28.37
END-COVER with MAIN RELIEF VALVE INTERNAL EXHAUST	£66.17
END-COVER with MAIN RELIEF VALVE EXTERNAL EXHAUST	£70.55

UNIDIRECTIONAL MOTOR (CLOCKWISE OR ANTICLOCKWISE MOTOR)	£9.45
BIDIRECTIONAL PUMP AND MOTOR (REVERSIBLE MOTOR)	£46.54
END COVER TWO SPEED (ON UNID. MOTOR)	£304.71
ANTICAVITATION VALVE VA MOTORE	£84.00
SPECIAL COVER WITH PRIORITY VALVE - VRF	£170.74
SPECIAL COVER WITH PRIORITY VALVE AND PRESSURE VALVE - VRF+VLP	£202.01

ADDITIONAL PRICES FOR PRICING UP TAMDEM PUMPS. GROUP 2 BASED		
KIT MULTIPLE PUMP	GR.2SP + GR.1	£85.09
KIT MULTIPLE PUMP	GR.2SP + GR.2SP	£85.09
Common suction (1st 2nd and 3rd pump)	additional price by 5% on multiple pump	

GROUP 3 GEAR PUMPS + GEAR MOTORS PRICE LIST

FOR TRIPLE AND QUADRUPLE KEEP ADDING
 'KIT MULTIPLE PUMP'
 • TANDEM = 1 KIT • TRIPLE = 2 KITS
 • QUADRUPLE = 3 KITS

DESCRIPTION	4 BOLT ALUMINIUM FLANGE STANDARD	2 BOLT ALUMINIUM FLANGE SAE B	4 BOLT CAST-IRON FLANGE	2 BOLT CAST-IRON FLANGE SAE B
PUMP 3 SP 19	£370.16	£389.79	£414.52	£440.28
PUMP 3 SP 22	£370.16	£389.79	£414.52	£440.28
PUMP 3 SP 29	£381.79	£401.44	£426.16	£451.90
PUMP 3 SP 33	£381.79	£401.44	£426.16	£451.90
PUMP 3 SP 36	£381.79	£401.44	£426.16	£451.90
PUMP 3 SP 44	£393.43	£413.08	£437.79	£464.98
PUMP 3 SP 52	£393.43	£413.08	£437.79	£464.98
PUMP 3 SP 62	£413.08	£432.70	£457.43	£485.32

FLANGE WITH O-Ring	£11.99
SHAFT SEAL (H)	£9.45
SEAL FOR HIGHT PRESSURE (K)	£5.45
VITON SEAL	£29.81
UNIDIRECTIONAL MOTOR	£46.93
BIDIRECTIONAL MOTOR	£63.72
SUPPORT ZFC	£173.05
END-COVER WITH MAIN RELIEF VALVE	£88.00

ADDITIONAL PRICES FOR PRICING UP TAMDEM PUMPS. GROUP 3 BASED		
KIT MULTIPLE PUMP	GR.3SP + GR.1SP	£124.34
KIT MULTIPLE PUMP	GR.3SP + GR.2SP	£132.37
KIT MULTIPLE PUMP	GR.3SP + GR.3SP	£140.36

FOR TRIPLE AND QUADRUPLE KEEP ADDING
 'KIT MULTIPLE PUMP'
 • TANDEM = 1 KIT • TRIPLE = 2 KITS
 • QUADRUPLE = 3 KITS