

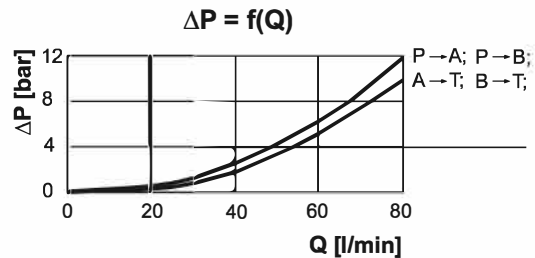
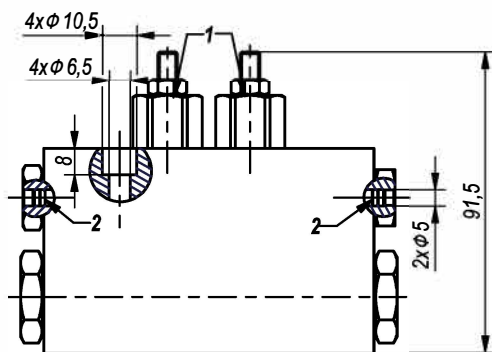
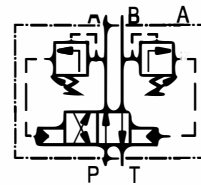
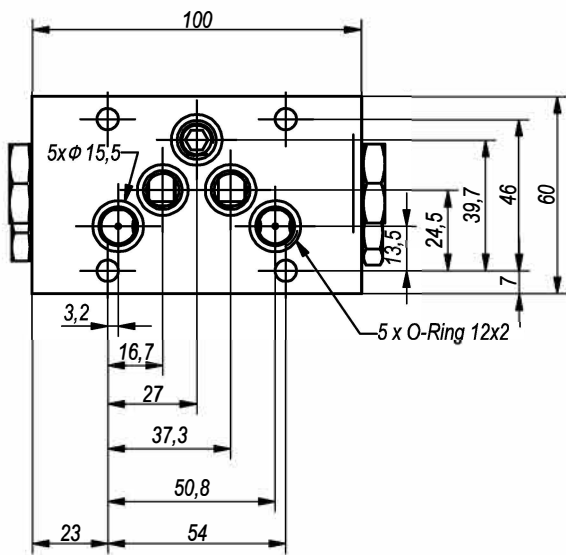
1

2

4/2RHA10 / 20

1 Valve type / Typ zaworu	
Code	4/2RHA10
Description	Automatic switching valve /

2 Pressure range / Zakres ciśnień	
Code	20
Description	50 : 200 bar



Note:

- All performances and calibration are carried out by using hydraulic oil with viscosity approx 46 cSt at 50 °C.
- Initial switching of the directional control valve
 - by push pins (position 2).
- Mounting plate:
 - acc. to ISO 4401-AB-05-4A (CETOP5)
- Tightening torque of the connecting screws on the mounting plate - 14 N.m.

TECHNICAL DATA		
General		
Ambient temperature	°C	-20...+50
Hydraulic		
Working pressure P_w	bar	50...200
Pressure adjustment of relief valves (position 1)	bar	$P_w + 10\%P_w$
Flow rate	L/min	5...80
Working fluid - mineral oil		
- viscosity	mm ² /s	10...100
- filtration level	μ m	25 or better
- temperature	°C	-20...+80