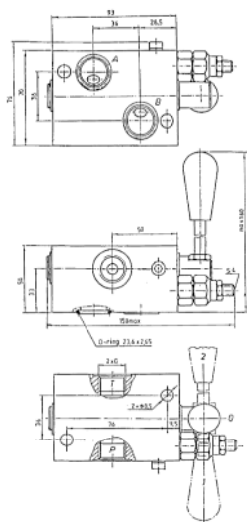


BOLT ON HYDRAULIC VALVES TO SUIT FLOWFIT AND

M+S HYDRAULIC MOTORS



BDR TYPE

FLOWFIT



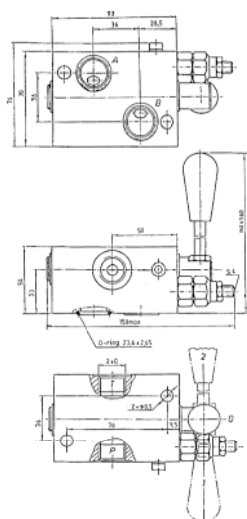
MOTOR MOUNTED, LEVER OPERATED DIRECTIONAL CONTROL VALVES C/W 3 POSITION DETENT KIT

Manifold mounts directly onto ports of EPM & EPRM (OMP & OMR) motor.

TECHNICAL DATA

Nominal flow rate 25 l/min for X = 38 • Nominal flow rate 50 l/min for X = 12
Nominal pressure 210 bar • Relief valve variation ratio 10-250 bar

PART NO.	FLOW L/MIN	NOMINAL PRESSURE (BAR)	PRICE
BDR-38-04	25	210	£265.58
BDR-38-05	25	210	£265.58
BDR-12-04	50	210	£265.58
BDR-12-05	50	210	£265.58



BDS TYPE

FLOWFIT



MOTOR MOUNTED, LEVER OPERATED DIRECTIONAL CONTROL VALVES C/W 3 POSITION DETENT KIT AND INTEGRAL RELIEF VALVE

Manifold mounts directly onto ports of EPMS (OMS) motor.

TECHNICAL DATA

Nominal flow rate 25 l/min for X = 38 • Nominal flow rate 50 l/min for X = 12
Nominal pressure 210 bar • Relief valve variation ratio 10-250 bar

PART NO.	FLOW L/MIN	NOMINAL PRESSURE (BAR)	PRICE
BDS-38-04	25	210	£265.58
BDS-38-05	25	210	£265.58
BDS-12-04	50	210	£265.58
BDS-12-05	50	210	£265.58



3 PORT FLOW CONTROL VALVE EXCESS TO TANK FLANGEABLE ON DANFOSS MOTORS OMP/OMR

USE AND OPERATION

This valve enables to keep "P" flow constant to a certain setting, independently of the required pressure or the inlet flow of the valve. Exceeded flow is drained directly in T (tank).

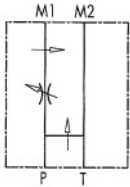
Body: zinc-plated steel

Internal parts: Hardened and ground steel

Seals: Buna N standard

Tightness: By diameter combination. Minor leakage (few drops per minute)

Applications: Connect M1 and M2 to the motor and P and T to the pressure.



PART NO.	TYPE	BSP PORTS	MAX INLET FLOW	MAX ADJUSTED FLOW	MAX PRESSURE (BAR)	PRICE
V1121	RFP3 1/2" OMP/OMR	1/2"	50 L/MIN	30 L/MIN	350	£149.74

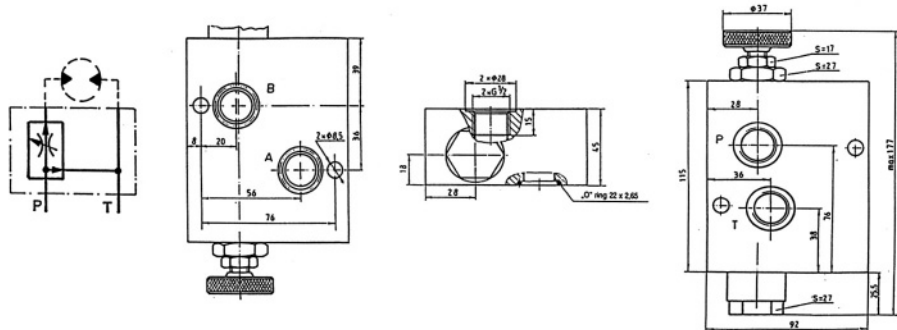


BVR TYPE

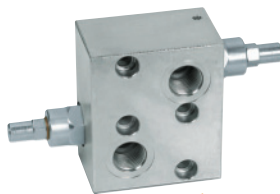


BVR TYPE MOTOR MOUNTED PRESSURE COMPENSATED FLOW CONTROL VALVE

Manifold mounts directly onto ports of EPM and EPRM (OMP + OMR MOTORS)

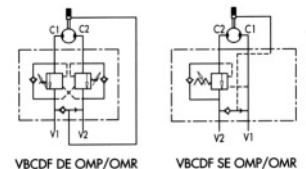


PART NO.	FLOW L/MIN	MAX PRESSURE (BAR)	PRICE
BV/R/12/05	100	250	£241.23



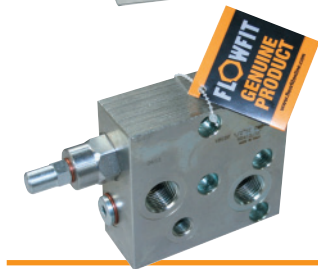
OVERCENTRE VALVES FLANGEABLE ON DANFOSS MOTORS OMP/OMR

Direct flange is ideal for Danfoss motor type omp-omr and provides a maximum safety, very low pressure drops and solid installation



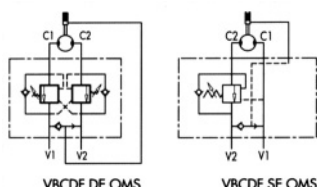
CODE	TYPE	PILOT RATIO	MAX FLOW L/MIN	MAX PRESSURE BAR	PRICE
V0415	VBCDF 1/2" SE OMP-OMR	1:4,5	50	350	£100.30
V0425	VBCDF 1/2" DE OMP-OMR	1:4,5	50	350	£167.20
V0415/SF	VBCDF 1/2" SE OMP-OMR SF/ BRAKE UNCLAPING	1:4,5	50	350	£90.73
V0425/SF	VBCDF 1/2" DE OMP-OMR SF/ BRAKE UNCLAPING	1:4,5	50	350	£178.05

NB. BRAKE UNCLAPING MEANS " A MECHANICAL FAIL SAFE BRAKE "



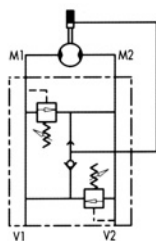
OVERCENTRE VALVES FLANGEABLE ON DANFOSS MOTORS OMS

Direct flange is ideal for Danfoss motors type oms and provides a maximum safety, very low pressure drops and solid installation



CODE	TYPE	PILOT RATIO	MAX FLOW L/MIN	MAX PRESSURE BAR	PRICE
V0416	VBCDF 1/2" SE OMS	1:4,5	50	350	£97.18
V0426	VBCDF 1/2" DE OMS	1:4,5	50	350	£164.87
V0416/SF	VBCDF 1/2" SE OMS /SF BRAKE UNCLAPING	1:8	50	350	£105.88
V0426/SF	VBCDF 1/2" DE OMS SF/ BRAKE UNCLAPING	1:8	50	350	£178.04

NB. BRAKE UNCLAPING MEANS " A MECHANICAL FAIL SAFE BRAKE "



DUAL CROSS RELIEF VALVE FLANGEABLE ON DANFOSS MOTORS OMS-OMP/OMR-OMT

USE AND OPERATION

Made up by 2 relief valves with crossed tank, this valve is used to block pressure to a certain setting in the 2 ports of an actuator/hydraulic motor. It's ideal to provide protection against sudden shock pressures and to adjust different pressures in the 2 ports of an hydraulic circuit as well. Direct flange is ideal for Danfoss motors type OMS, OMP/OMR and OMT and provides a maximum safety, very low pressure drops and solid installation.

Body: Zinc-plated steel **Internal parts:** Hardened and ground steel, **Seals:** Buna N standard, **Poppet type:** minor leakage

Applications: Flange M1 and M2 directly to the motor and connect V1 and V2 to pressure flow.

ON REQUEST: DIFFERENT SETTING RANGE AVAILABLE (SEE TABLE BELOW) OTHER SETTINGS AVAILABLE (CODE/T: PLEASE SPECIFY THE DESIRED SETTING). SINGLE ACTING WITH JUST 1 RELIEF AVAILABLE (CODE/ SE). BRAKE UNCLAPING (CODE/ SF)

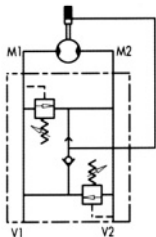
CODE	TYPE	MAX FLOW L/MIN	MAX PRESSURE BAR	PRICE
V0490	VAU 1/2" OMS	50	300	£75.14
V0500	VAU 1/2" OMP/OMR	60	300	£76.87
V0505	VAU 3/4" OMT	100	300	£91.98
V0490/SE	VAU 1/2" OMS SE/ SINGLE ACTING	50	300	£72.65
V0500/SE	VAU 1/2" OMP/OMR SE/SINGLE ACTING	60	300	£75.02
V0505/SE	VAU 3/4" OMT SE/SINGLE ACTING	100	300	£89.89
V0490/T	VAU 1/2" OMS PRESSURE PRESET	50	300	£78.97
V0500/T	VAU 1/2" OMP/OMR PRESSURE PRESET	60	300	£80.73
V0505/T	VAU 3/4" OMT PRESSURE PRESET	100	300	£95.61
V0490/V	VAU 1/2" OMS HANDKNOB	50	300	£82.67
V0500/V	VAU 1/2" OMP/OMR HANDKNOB	60	300	£84.43
V0505/V	VAU 3/4" OMT HANDKNOB	100	300	£82.02
V0490/P	VAU 1/2" OMS SEALING CAP	50	300	£84.61
V0500/P	VAU 1/2" OMP/OMR SEALING CAP	60	300	£86.33
V0505/P	VAU 3/4" OMT SEALING CAP	100	300	£101.20
V0490/SF	VAU 1/2" OMS SF/ BRAKE UNCLAPING	50	300	£84.31
V0500/SF	VAU 1/2" OMP/OMR SF/ BRAKE UNCLAPING	60	300	£86.01
V0505/SF	VAU 3/4" OMT SF/ BRAKE UNCLAPING	100	300	£100.94

NB. BRACE UNCLAPING MEANS " A MECHANICAL FAIL SAFE BRAKE "

SPRINGS

SETTING RANGE BAR	PRESSURE INCREASE (BAR/TURN)	STANDARD SETTING BAR
10 - 50*	7	30
20 - 100	12	75
10 - 180 (Standard)	30	90
50 - 250	45	130
80 - 300	50	150

* = For setting less than 70 Bar Q = 12 l/m



DUAL CROSS RELIEF VALVE FLANGEABLE ON SAMHYDRAULIK MOTORS AG - AR

USE AND OPERATION

Made up by 2 relief valves with crossed tank, this valve is used to block pressure to a certain setting in the 2 ports of an actuator/hydraulic motor. It's ideal to provide protection against sudden shock pressures and to adjust different pressures in the 2 ports of an hydraulic circuit as well. Direct flange is ideal for Samhydraulic motors type AG - AR and provides a maximum safety, very low pressure drops and solid installation.

Body: Zinc-plated steel **Internal parts:** Hardened and ground steel, **Seals:** Buna N standard, **Poppet type:** minor leakage

Applications: Flange M1 and M2 directly to the motor and connect V1 and V2 to pressure flow.

ON REQUEST: DIFFERENT SETTING RANGE AVAILABLE (SEE TABLE BELOW) OTHER SETTINGS AVAILABLE (CODE/T: PLEASE SPECIFY THE DESIRED SETTING). BRAKE UNCLAPING (CODE/ SF)

CODE	TYPE	MAX FLOW L/MIN	MAX PRESSURE BAR	PRICE
V0455	VAU 1" AG - AR	60	300	£78.44
V0455/T	VAU 1" AG - AR PRESSURE PRESET	60	300	£82.00
V0455/V	VAU 1" AG - AR HANDKNOB	60	300	£85.65
V0455/P	VAU 1" AG - AR SEALING CAP	60	300	£87.47
V0455/SF	VAU 1" AG - AR SF/ BRAKE UNCLAPING	60	300	£87.47

BRACE UNCLAPING MEANS " A MECHANICAL FAIL SAFE BRAKE "

SPRINGS

SETTING RANGE BAR	PRESSURE INCREASE (BAR/TURN)	STANDARD SETTING BAR
10 - 50*	7	30
20 - 100	12	75
10 - 180 (Standard)	30	90
50 - 250	45	130
80 - 300	50	150

* = For setting less than 70 Bar Q = 12 l/m