

SINGLE AND DOUBLE ACTING HYDRAULIC POWER PACKS • SECTION NP1

# FLOWFIT SINGLE AND DOUBLE ACTING HYDRAULIC POWER PACKS

FLOWFIT 12VDC SINGLE ACTING HYDRAULIC POWER PACKS.....	NP3
FLOWFIT 12VDC DOUBLE ACTING, NG6 (CETOP 3) SOLENOID VALVE POWER PACKS.....	NP6
FLOWFIT 12VDC DOUBLE ACTING, DOUBLE NG6 (CETOP 3) SOLENOID VALVE POWER PACKS.....	NP9
FLOWFIT 24VDC SINGLE ACTING HYDRAULIC POWER PACKS.....	NP12
FLOWFIT 24VDC DOUBLE ACTING, NG6 (CETOP 3) SOLENOID VALVE POWER PACKS.....	NP15
FLOWFIT 24VDC DOUBLE ACTING, DOUBLE NG6 (CETOP 3) SOLENOID VALVE POWER PACKS....	NP18
FLOWFIT ACCESSORIES.....	NP21









# FLOWFIT 12VDC SINGLE ACTING HYDRAULIC POWER PACKS

## TECHNICAL DATA

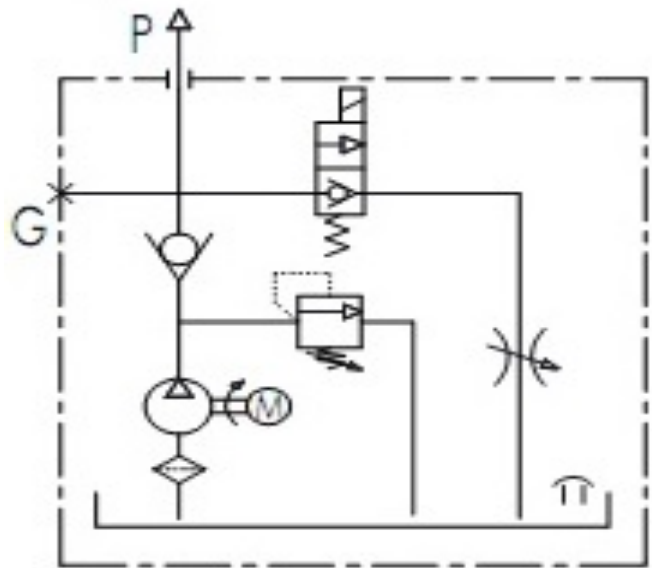
### Flowfit 12VDC Single Acting Hydraulic Powerunit

POWERUNIT PACKAGE to operate a single acting cylinder on any trailer or tipper application, or any single acting application complete with detachable two button pendant.

- 12VDC powerunit.
- 2.1cc/rev gear pump.
- 1.6kw 12VDC electric motor c/w relay and plastic motor cover.
- 4.5 Litre or 8.0 Litre reservoir c/w drain plug.
- Powerpack complete with suction strainer, return oil conveyor and filler breather.
- Horizontal mounting.
- Max pressure 200 bar.
- Relief valve set at 160 bar but adjustable from 40-200 bar as standard.
- Max flow 5 l/min.
- Adjustable flow control for cylinder decent control.
- 12VDC let down valve, relief and P line check.
- Port size 3/8" BSP.
- 2 Button detachable pendant on a 4 metre lead.
- Suitable for all single acting applications.

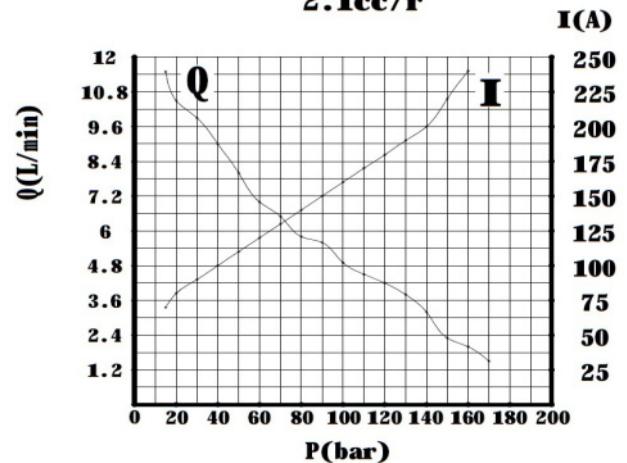
WITH MANY ADDED FEATURES SUCH AS FLOW CONTROL ON CYLINDER DECENT, DETACHABLE PENDANTS FOR ADDED SECURITY, REMOVEABLE PLASTIC MOTOR COVER AND A VARIATION ON WHICH RELIEF VALVE SPRING IS FITTED YOU ARE GETTING AN EXCEPTIONALLY GOOD QUALITY PRODUCT AT A VERY COMPETITIVE PRICE.

### SINGLE ACTING HYDRAULIC CIRCUIT DIAGRAM

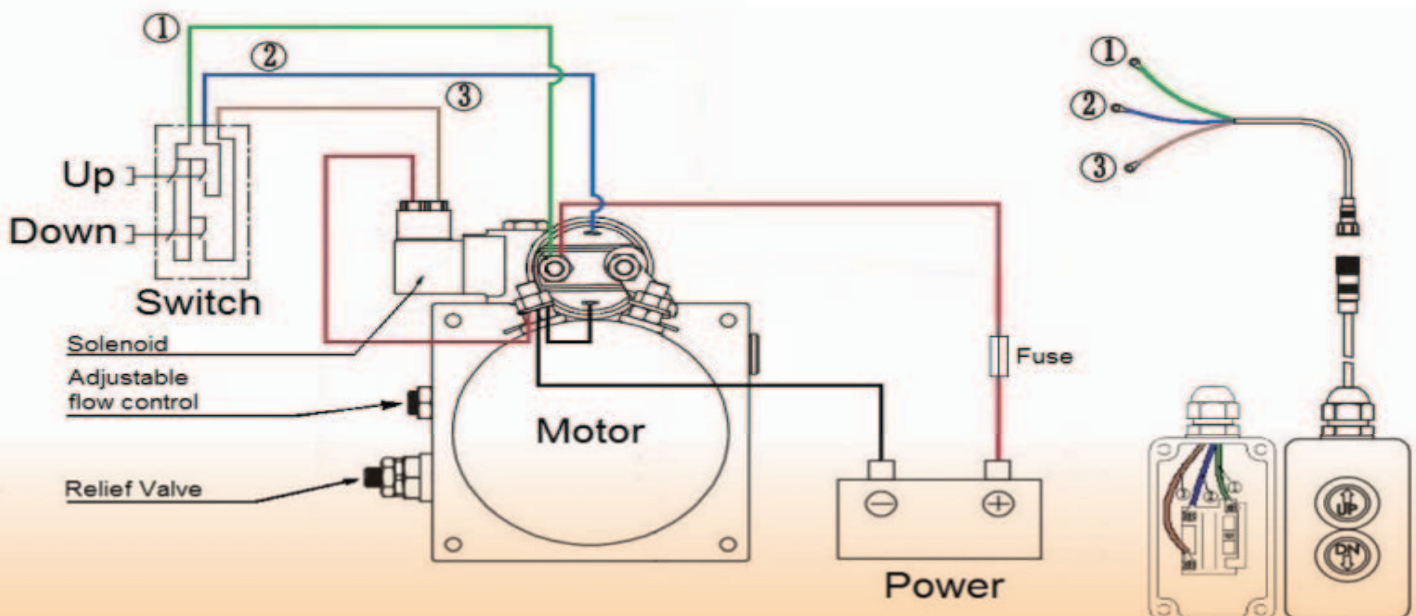


### FLOW CURVE DATA

DC12V 1.6KW  
2.1cc/r



### SINGLE ACTING WIRING DIAGRAM







# FLOWFIT 12VDC DOUBLE ACTING, NG6 (CETOP 3) SOLENOID VALVE POWER PACKS

The Flowfit 12VDC Double Acting power pack is ideal for use in the following applications:

- |                            |                          |
|----------------------------|--------------------------|
| Tail Lift                  | Hoists/Winches           |
| Trailer/Tipper             | Compactors               |
| Hand operated lift stacker | Parking Systems/Barriers |
| Scissor Lift Platform      | Security Gates           |
| Aerial Platform            | Dock Leveler             |

The Flowfit 12VDC Double Acting power pack is a compact and quiet unit, able to deliver a flow rate of up to 5 litres a minute at 160 bar. The compact design includes a CETOP 3 double acting solenoid valve, relief valve and flow controller mounted within the housing and comes complete with a detachable pre-wired 2 button pendant and 4.5 litre plastic tank as standard.

Options available include an 8.0 litre plastic tank for increased capacity on larger systems.

The Flowfit 12VDC Double Acting power pack will require a high capacity battery and a suitable in-line fuse for normal operation.

The motor is designed for intermittent use (S3) which is defined as a sequence of identical cycles of 10 minute duration. The cycle comprises a period of on-load (td) operation in which the motor may reach its maximum permitted temperature, followed by an off-load period (tm) of time, insufficient for the motor to return to ambient temperature.

The value of S3 on this motor equates to 7% or 42 seconds of on-load operation in a ten minute period.



PRODUCT REFERENCE	DESCRIPTION	PRICE
ZZ004232	FLOWFIT 12VDC DOUBLE ACTING, SINGLE SOLENOID HYDRAULIC POWERPACK, 4.5 LITRE RESERVOIR C/W 2 BUTTON PENDANT. 5 L/MIN @ 160BAR.	£381.60

PRODUCT REFERENCE	DESCRIPTION	PRICE
ZZ004233	FLOWFIT 12VDC DOUBLE ACTING, SINGLE SOLENOID HYDRAULIC POWERPACK, 8.0 LITRE RESERVOIR C/W 2 BUTTON PENDANT. 5 L/MIN @ 160BAR.	£402.80







# FLOWFIT 12VDC DOUBLE ACTING, DOUBLE NG6 (CETOP 3) SOLENOID VALVE POWER PACKS



The Flowfit 12VDC Double Acting Double CETOP power pack is ideal for use in the following applications:

- |                            |                          |
|----------------------------|--------------------------|
| Tail Lift/Extender         | Hoists/Winches           |
| Trailer/Tipper             | Compactors               |
| Hand operated lift stacker | Parking Systems/Barriers |
| Scissor Lift Platform      | Security Gates           |
| Aerial Platform            | Dock Leveler             |

The Flowfit 12VDC Double Acting Double CETOP power pack is a compact and quiet unit, able to deliver a flow rate of up to 5 litres a minute at 160 bar. The compact design includes two CETOP 3 double acting solenoid valves operating two separate circuits, a relief valve and a flow controller mounted within the housing and comes complete with a detachable pre-wired 4 button pendant and 4.5 litre plastic tank as standard.

Options available include an 8.0 litre plastic tank for increased capacity on larger systems.

The Flowfit 12VDC Double Acting power pack will require a high capacity battery and a suitable in-line fuse for normal operation.

The motor is designed for intermittent use (S3) which is defined as a sequence of identical cycles of 10 minute duration. The cycle comprises a period of on-load (td) operation in which the motor may reach its maximum permitted temperature, followed by an off-load period (tm) of time, insufficient for the motor to return to ambient temperature.

The value of S3 on this motor equates to 7% or 42 seconds of on-load operation in a ten minute period.



PRODUCT REFERENCE	DESCRIPTION	PRICE
ZZ004234	FLOWFIT 12VDC DOUBLE ACTING, DOUBLE SOLENOID HYDRAULIC POWER-PACK, 4.5 LITRE RESERVOIR C/W 4 BUTTON PENDANT. 5 L/MIN @ 160BAR.	£473.82

PRODUCT REFERENCE	DESCRIPTION	PRICE
ZZ004233	FLOWFIT 12VDC DOUBLE ACTING, DOUBLE SOLENOID HYDRAULIC POWER-PACK, 8.0 LITRE RESERVOIR C/W 4 BUTTON PENDANT. 5 L/MIN @ 160BAR.	£495.02







# FLOWFIT 24VDC SINGLE ACTING HYDRAULIC POWER PACKS

The Flowfit 24VDC Single Acting power pack is ideal for use in the following applications:

- Tail Lift
- Trailer/Tipper
- Hand operated lift stacker
- Scissor Lift Platform
- Aerial Platform

The Flowfit 12VDC Single Acting power pack is a compact and quiet unit, able to deliver a flow rate of up to 5 litres a minute at 160 bar. The compact design includes a lowering solenoid valve, relief valve and flow controller mounted within the housing and comes complete with a detachable pre-wired 2 button pendant and 4.5 litre plastic tank as standard.

Options available include an 8.0 litre plastic tank for increased capacity on larger systems and a wireless remote, operated by key fob.

The Flowfit 24VDC Single Acting power pack will require a high capacity battery and a suitable in-line fuse for normal operation.

The motor is designed for intermittent use (S3) which is defined as a sequence of identical cycles of 10 minute duration. The cycle comprises a period of on-load (td) operation in which the motor may reach its maximum permitted temperature, followed by an off-load period (tm) of time, insufficient for the motor to return to ambient temperature.

The value of S3 on this motor equates to 7% or 42 seconds of on-load operation in a ten minute period.



PRODUCT REFERENCE	DESCRIPTION	PRICE
ZZ003820	FLOWFIT 24VDC SINGLE ACTING HYDRAULIC POWERPACK, 4.5 LITRE RESERVOIR C/W 2 BUTTON PENDANT. 5 L/MIN @ 160BAR.	£275.60

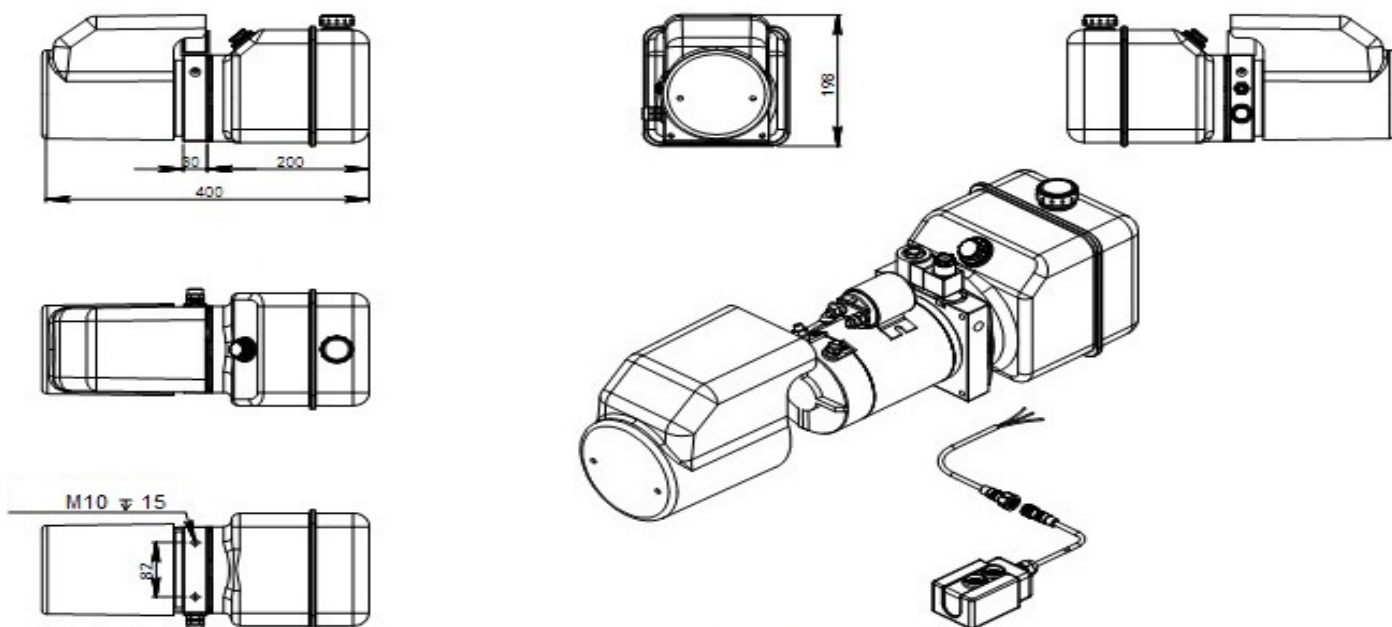
PRODUCT REFERENCE	DESCRIPTION	PRICE
ZZ003835	FLOWFIT 24VDC SINGLE ACTING HYDRAULIC POWERPACK, 8.0 LITRE RESERVOIR C/W 2 BUTTON PENDANT. 5 L/MIN @ 160BAR.	£296.80



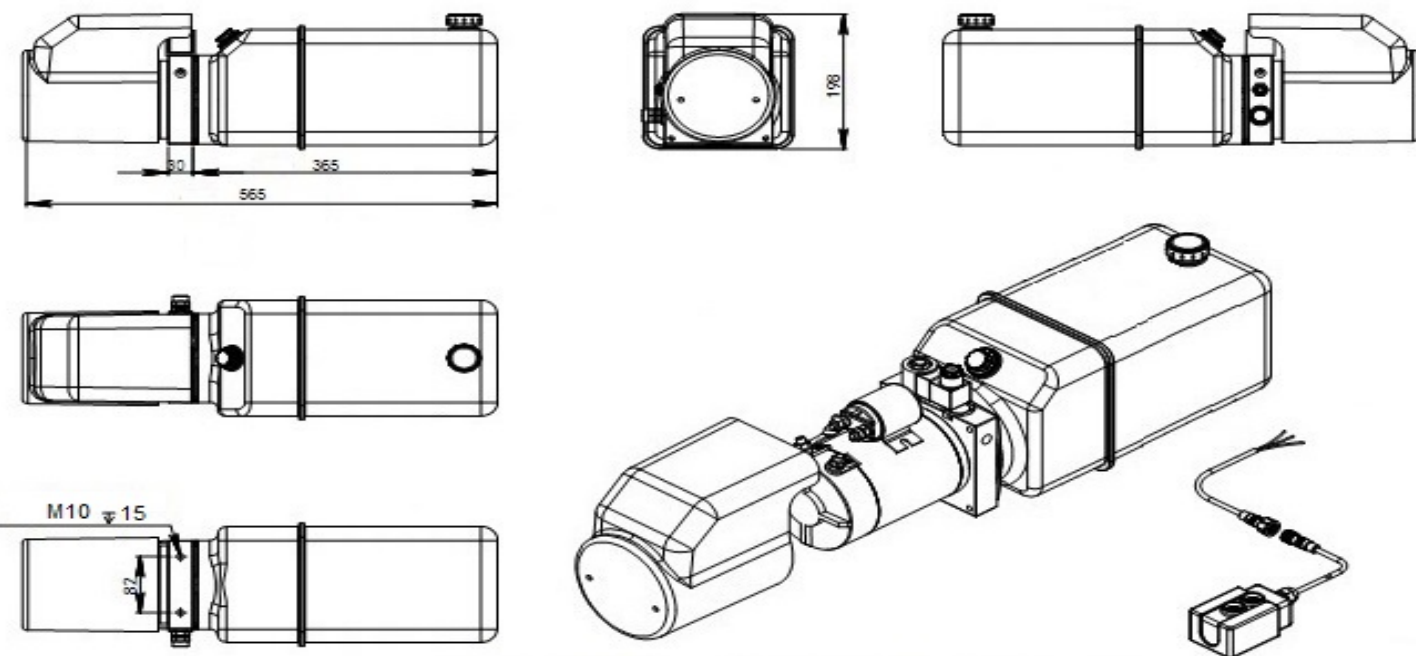


# FLOWFIT 24VDC SINGLE ACTING HYDRAULIC POWER PACKS

## 4.5 LITRE POWER PACK DIMENSIONS



## 8.0 LITRE POWER PACK DIMENSIONS







# FLOWFIT 24VDC DOUBLE ACTING, NG6 (CETOP 3) SOLENOID VALVE POWER PACKS

## TECHNICAL DATA

### Flowfit 24VDC Double Acting NG6 Solenoid Valve Hydraulic Powerunit

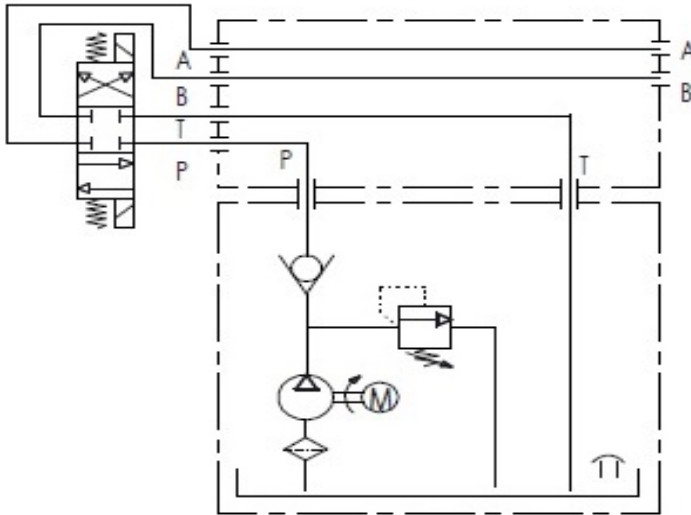
POWERUNIT PACKAGE to operate a double acting cylinder on a variety of applications, complete with detachable two button pendant.

- 24VDC powerunit.
- 2.1cc/rev gear pump.
- 1.6kw 24VDC electric motor c/w relay and plastic motor cover.
- 4.5 Litre or 8.0 Litre reservoir c/w drain plug.
- Powerpack complete with suction strainer, return oil conveyor and filler breather.
- Horizontal mounting.

- Max pressure 200 bar.
- Relief valve set at 160 bar but adjustable from 40-200 bar as standard.
- Max flow 5 l/min.
- Relief valve and P line check.
- Port size 3/8" BSP.
- 2 Button detachable pendant on a 4 metre lead.
- Suitable for all double acting applications.

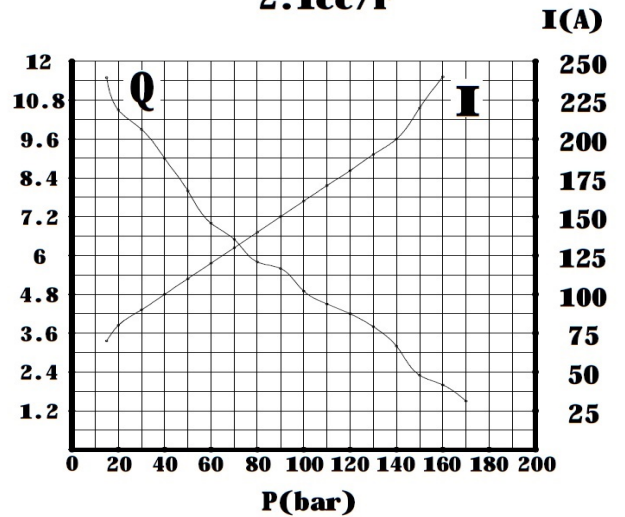
WITH MANY ADDED FEATURES SUCH AS DETACHABLE PENDANTS FOR ADDED SECURITY, REMOVEABLE PLASTIC MOTOR COVER AND A VARIATION ON WHICH RELIEF VALVE SPRING IS FITTED YOUR ARE GETTING AN EXCEPTIONALLY GOOD QUALITY PRODUCT AT A VERY COMPETITIVE PRICE.

DOUBLE ACTING, NG6 SOLENOID VALVE HYDRAULIC CIRCUIT DIAGRAM

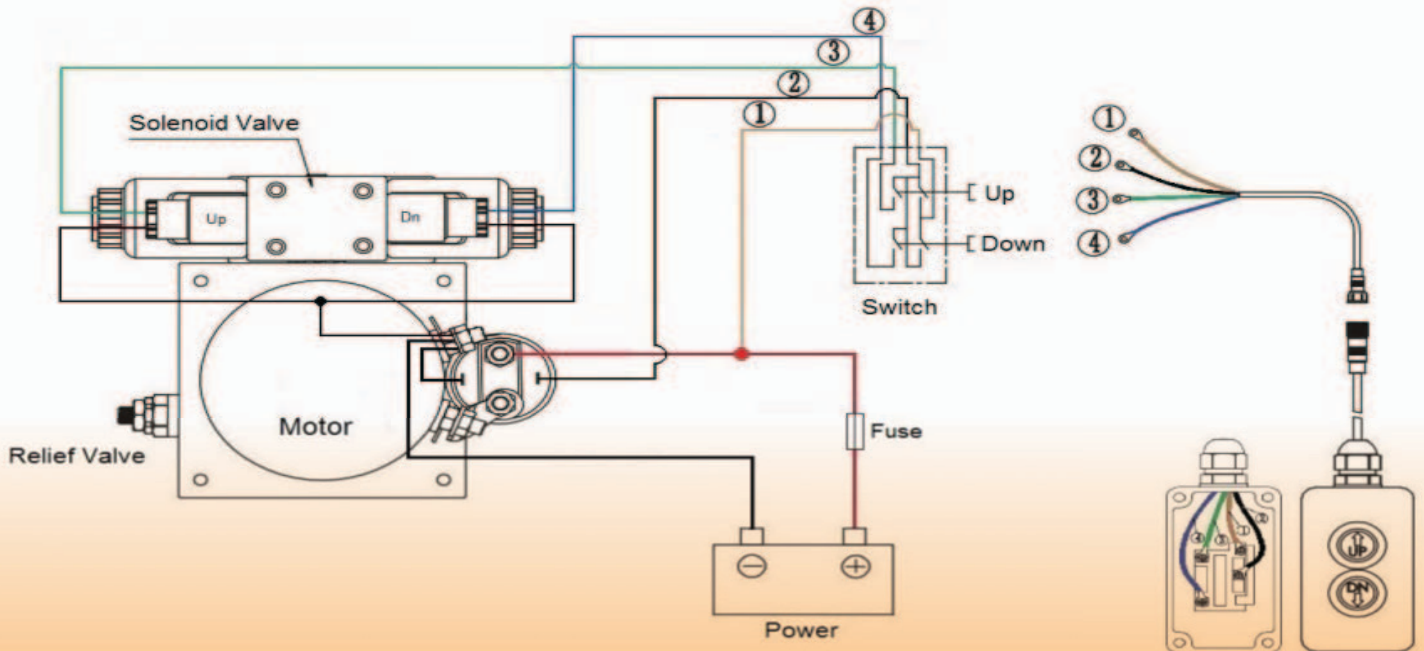


FLOW CURVE DATA

DC12V 1.6KW  
2.1cc/r



DOUBLE ACTING, NG6 SOLENOID VALVE WIRING DIAGRAM









# FLOWFIT 24VDC DOUBLE ACTING, DOUBLE NG6 (CETOP 3) SOLENOID VALVE POWER PACKS

The Flowfit 24VDC Double Acting Double CETOP power pack is ideal for use in the following applications:

- |                            |                          |
|----------------------------|--------------------------|
| Tail Lift/Extender         | Hoists/Winches           |
| Trailer/Tipper             | Compactors               |
| Hand operated lift stacker | Parking Systems/Barriers |
| Scissor Lift Platform      | Security Gates           |
| Aerial Platform            | Dock Leveler             |

The Flowfit 12VDC Double Acting Double CETOP power pack is a compact and quiet unit, able to deliver a flow rate of up to 5 litres a minute at 160 bar. The compact design includes two CETOP 3 double acting solenoid valves operating two separate circuits, a relief valve and a flow controller mounted within the housing and comes complete with a detachable pre-wired 4 button pendant and 4.5 litre plastic tank as standard.

Options available include an 8.0 litre plastic tank for increased capacity on larger systems.

The Flowfit 12VDC Double Acting power pack will require a high capacity battery and a suitable in-line fuse for normal operation.

The motor is designed for intermittent use (S3) which is defined as a sequence of identical cycles of 10 minute duration. The cycle comprises a period of on-load (td) operation in which the motor may reach its maximum permitted temperature, followed by an off-load period (tm) of time, insufficient for the motor to return to ambient temperature.

The value of S3 on this motor equates to 7% or 42 seconds of on-load operation in a ten minute period.



PRODUCT REFERENCE	DESCRIPTION	PRICE
ZZ004238	FLOWFIT 24VDC DOUBLE ACTING, DOUBLE SOLENOID HYDRAULIC POWER-PACK, 4.5 LITRE RESERVOIR C/W 4 BUTTON PENDANT. 5 L/MIN @ 160BAR.	£473.82

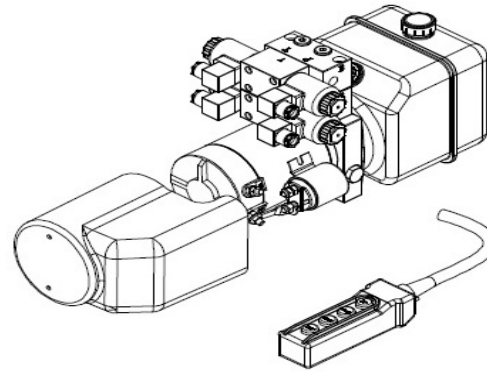
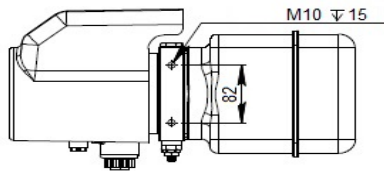
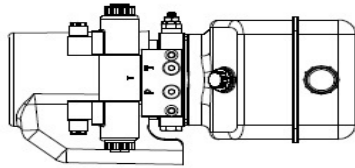
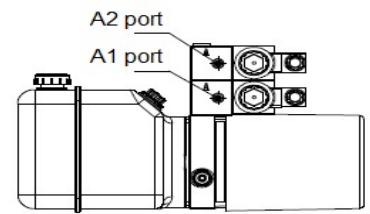
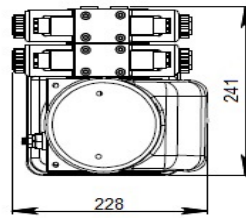
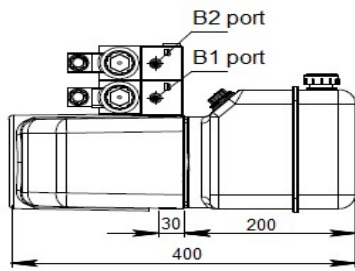
PRODUCT REFERENCE	DESCRIPTION	PRICE
ZZ004239	FLOWFIT 24VDC DOUBLE ACTING, DOUBLE SOLENOID HYDRAULIC POWER-PACK, 8.0 LITRE RESERVOIR C/W 4 BUTTON PENDANT. 5 L/MIN @ 160BAR.	£495.02



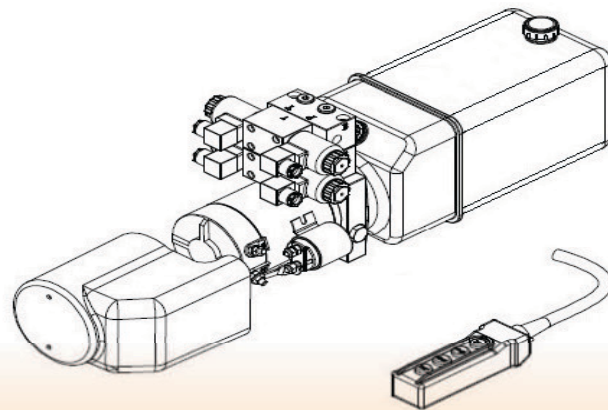
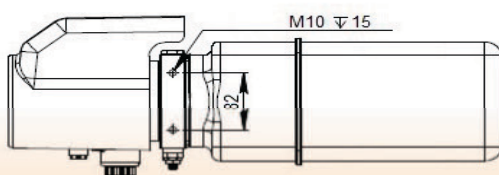
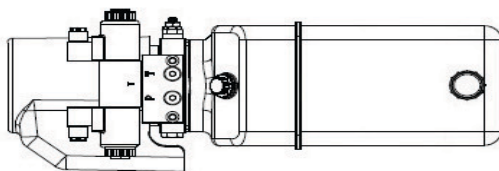
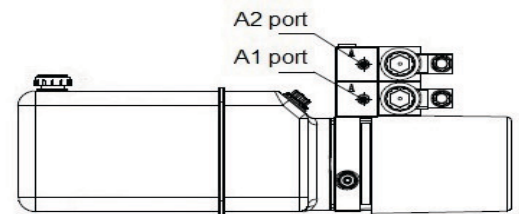
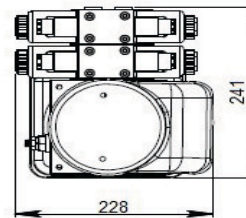
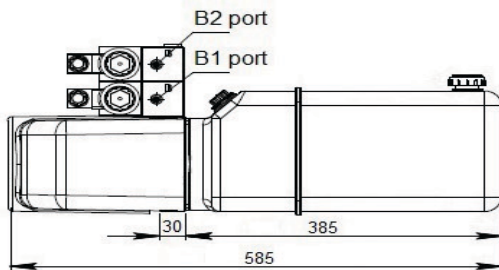


# FLOWFIT 24VDC DOUBLE ACTING, DOUBLE NG6 (CETOP 3) SOLENOID VALVE POWER PACKS

## 4.5 LITRE POWER PACK DIMENSIONS



## 8.0 LITRE POWER PACK DIMENSIONS



# ACCESSORIES



## 24VDC MOTOR (with Relay)

## 12VDC MOTOR (with Relay)



Voltage: 24VDC  
 Power: 1.6kW  
 Relay: 24V 200A  
 Speed: 3500RPM  
 Duty: S3=7% (Intermittent Duty)  
 Dimensions: Ø 114mm, Length 170mm  
 Drive: Splined

Voltage: 12VDC  
 Power: 1.6kW  
 Relay: 12V 200A  
 Speed: 3500RPM  
 Duty: S3=7% (Intermittent Duty)  
 Dimensions: Ø 114mm, Length 170mm  
 Drive: Splined

S3 Intermittent duty is defined as a sequence of identical cycles of 10 minute duration. The cycle comprises a period of on-load (td) operation in which the motor may reach its maximum permitted temperature, followed by an off-load period (tm) of time, insufficient for the motor to return to ambient temperature.

The value of S3 on this motor equals 7% or 42 seconds of on-load operation in a ten minute period.

PRODUCT REFERENCE	DESCRIPTION	PRICE
24VDCMOTOR	24VDC MOTOR 1.6KW C/W RELAY	£140.83
12VDCMOTOR	12VDC MOTOR 1.6KW C/W RELAY	£140.83

## 24VDC COIL FOR LET DOWN VALVE

## 12VDC COIL FOR LET DOWN VALVE

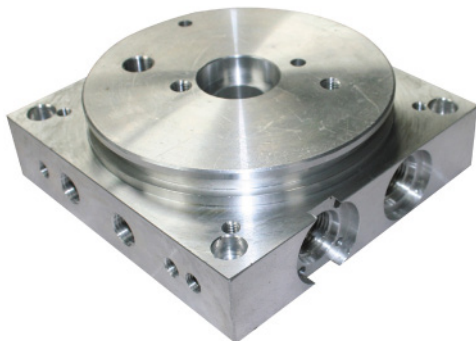


24VDC coil with Herschmann connector, for use on the lowering valve of Single Acting 24VDC power packs (ZZ003820 and ZZ003835).

12VDC coil with Herschmann connector, for use on the lowering valve of Single Acting 12VDC power packs (ZZ003468 and ZZ003834).

PRODUCT REFERENCE	DESCRIPTION	PRICE
24VLOWCOIL	24VDC COILS TO SUIT ZZ003820 & ZZ003835 USED ON LET DOWN VALVE	£15.22
12VLOWCOIL	12VDC COILS TO SUIT ZZ003468 & ZZ003834 USED ON LET DOWN VALVE	£15.22

## JC00-01 DOUBLE ACTING HOUSING



Double Acting Housing machined from solid aluminium block. Comes with 1/4" BSP threaded P and T ports to use as basic P and T unit. Machined ports for Relief Valve, Check Valve, and Flow Control Valve.

Requires separate manifold for Double Acting operation.

Mounting face machined to enable DC motor to be positioned at 90° intervals.

PRODUCT REFERENCE	DESCRIPTION	PRICE
DAHOUSING	JC00-01 DOUBLE ACTING HOUSING TO SUIT NEW STYLE POWERPACKS	£76.32

## CETOP 3 NG6 1 STATION MANIFOLD



CETOP 3 (NG6) 1 station manifold machined from solid aluminium block. P, T, A and B ports come with 1/4" BSP thread.

Two manifolds can be stacked together creating a Double Acting, Double Cetop 3 power pack.

Mounting bolts:  
 M8 x 50mm Cap Head (single manifold)  
 M8 x 100mm Cap Head (double manifold)

PRODUCT REFERENCE	DESCRIPTION	PRICE
CETOP31STATION	CETOP 3, 1 STATION MANIFOLD TO SUIT JC00-01 HOUSING	£25.44

## PLASTIC 8.0 LITRE TANK

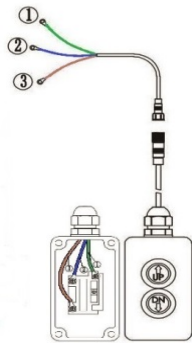


8.0 Litre horizontal plastic tank for increased capacity of larger hydraulic systems.

Comes with Filler Breather (with Dip Stick), blank plug and Jubilee Clip.

PRODUCT REFERENCE	DESCRIPTION	PRICE
PLASTANK8L	PLASTIC TANK 8.0L C/W RED PLUG AND BREATHER	£15.11

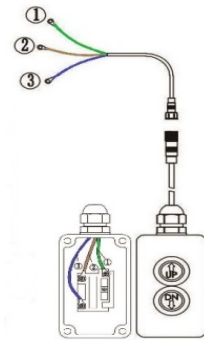
## 2 BUTTON SINGLE ACTING 3 WIRE PENDANT



2 button Single Acting pendant comes pre-wired for powered lift and gravity lowered applications.

Comes with 4 metres of detachable 3 wire cable for added security.

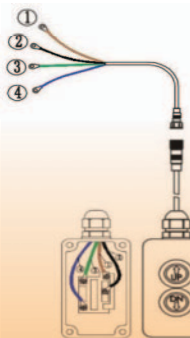
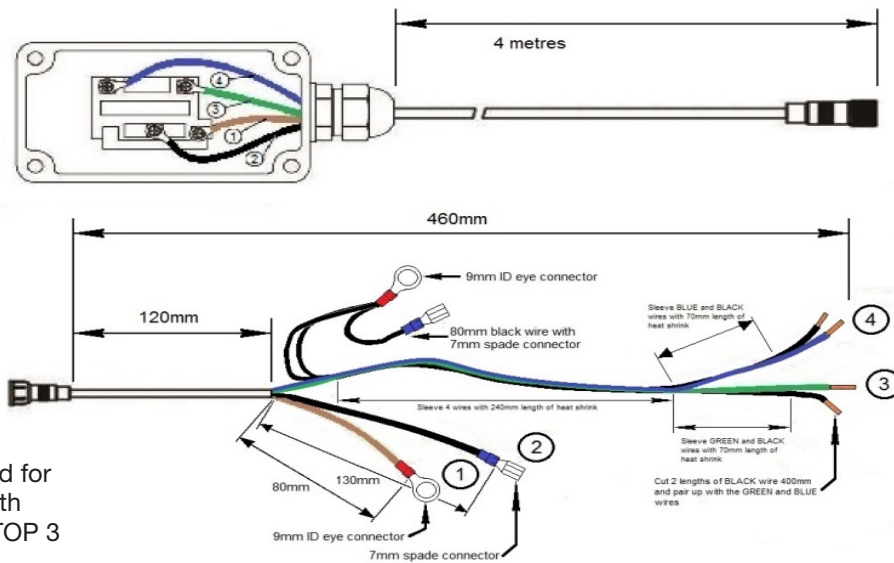
Also available for Single Acting power packs with remote option.



Wiring diagram for Single Acting power pack with remote option.

PRODUCT REFERENCE	DESCRIPTION	PRICE
PENDSA	3 WIRE SINGLE ACTING PENDANT WITH 4 METRE CABLE DETACHABLE	£29.68

## 2 BUTTON DOUBLE ACTING 4 WIRE PENDANT



2 button Double Acting pendant comes pre-wired for powered operation in both directions through a CETOP 3 (NG6) solenoid valve.

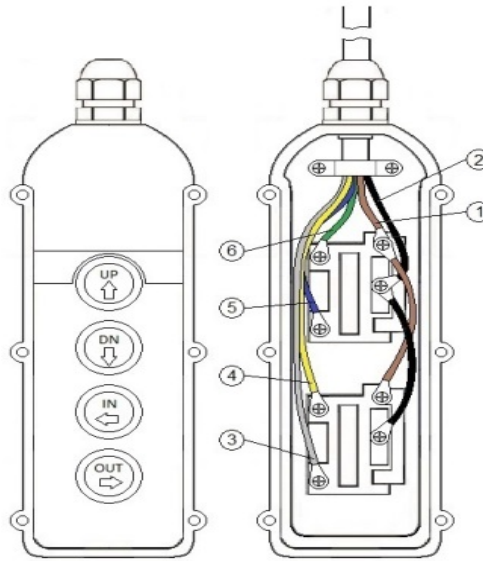
Comes with 4 metres of detachable 4 wire cable for added security.

PRODUCT REFERENCE	DESCRIPTION	PRICE
PENDDA	4 WIRE DOUBLE ACTING PENDANT WITH 4 METRE CABLE DETACHABLE	£40.28

# ACCESSORIES

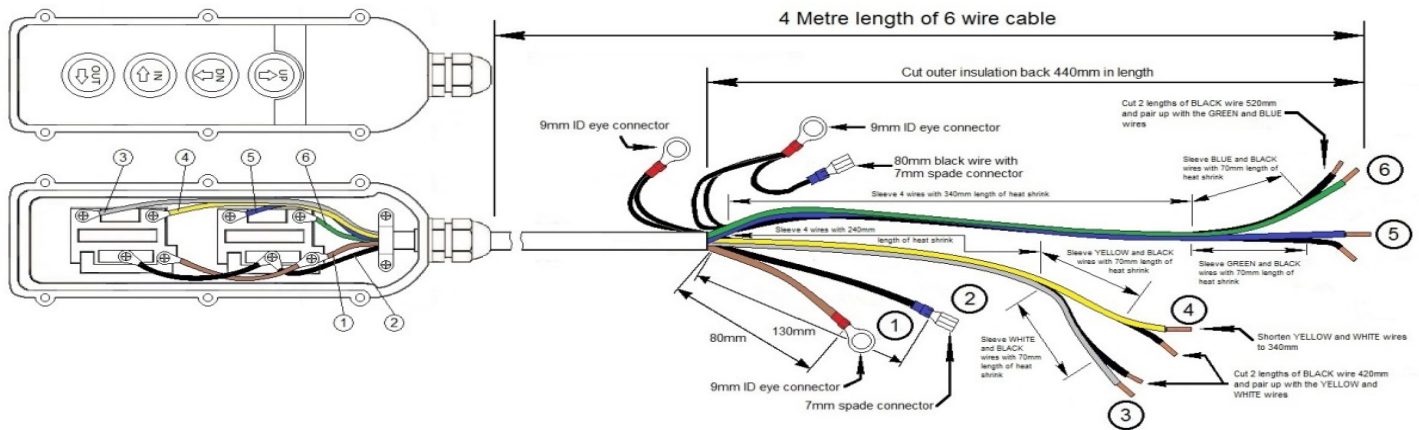


## 4 BUTTON DOUBLE ACTING 6 WIRE PENDANT



4 button Double Acting pendant comes pre wired to operate two separate hydraulic circuits through two CETOP 3 (NG6) solenoid valves.

Comes with 4 metres of 6 wire cable for hard wiring into a power pack.



PRODUCT REFERENCE	DESCRIPTION	PRICE
PENDDADA	6 WIRE DOUBLE ACTING PENDANT WITH 4 METRE CABLE DETACHABLE	£53.00

PRODUCT REFERENCE	DESCRIPTION	PRICE
LABEL: YELLOW WARNING	YELLOW WARNING LABEL TO SUIT SINGLE ACTING POWERPACKS	£2.12
LABELS: ZZ003468	FLOWFIT LABEL TO SUIT ZZ003468	£2.12
LABELS: ZZ003820	FLOWFIT LABEL TO SUIT ZZ003820	£2.12
LABELS: ZZ003834	FLOWFIT LABEL TO SUIT ZZ003834	£2.12
LABELS: ZZ003835	FLOWFIT LABEL TO SUIT ZZ003835	£2.12

# FLOWFIT

SHOP NOW OPEN 6 DAYS A WEEK



## HOW TO FIND US

**FLOWFIT**  
Parys Road  
Ludlow Business  
Park Ludlow  
Shropshire SY8 1XY

Telephone: +44 (0)1584 876 033 Fax: +44 (0)1584 876 044  
Email: [sales@flowfitonline.com](mailto:sales@flowfitonline.com)

[www.flowfitonline.com](http://www.flowfitonline.com)