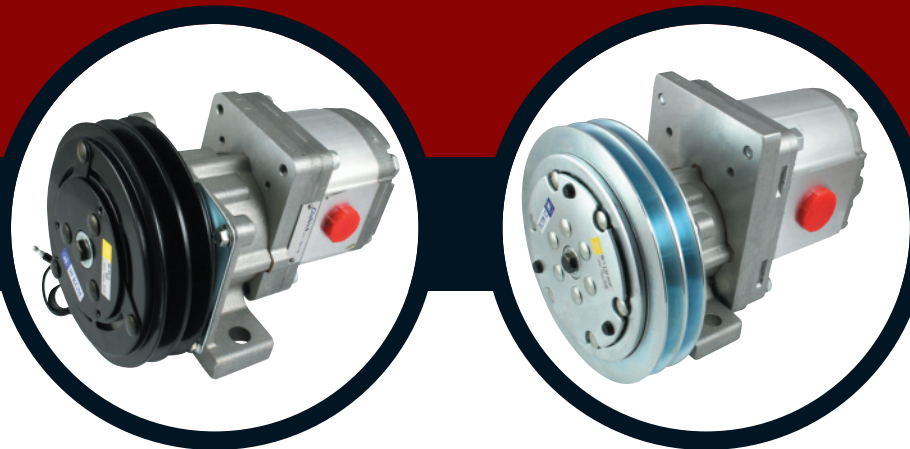


ELECTRO MAGNETIC CLUTCH AND PUMP ASSEMBLIES

12V ELECTRO MAGNETIC CLUTCH AND PUMP ASSEMBLY 12 L/min at 210 bar.....	483
12V ELECTRO MAGNETIC CLUTCH AND PUMP ASSEMBLY 25.5 L/min at 210 bar.....	483
12V ELECTRO MAGNETIC CLUTCH AND PUMP ASSEMBLY 39 L/min at 210 bar.....	483
12V ELECTRO MAGNETIC CLUTCH AND PUMP ASSEMBLY 49.5 L/min at 210 bar.....	483
12V ELECTRO MAGNETIC CLUTCH AND PUMP ASSEMBLY 58.5 L/min at 210 bar.....	484
12V ELECTRO MAGNETIC CLUTCH AND PUMP ASSEMBLY 66.9 L/min at 210 bar.....	484
12V ELECTRO MAGNETIC CLUTCH AND PUMP ASSEMBLY 87.9 L/min at 210 bar.....	484
12V ELECTRO MAGNETIC CLUTCH AND PUMP ASSEMBLY 98.7 L/min at 210 bar.....	484
12V ELECTRO MAGNETIC CLUTCH AND PUMP ASSEMBLY 109.2 L/min at 210 bar.....	485
24V ELECTRO MAGNETIC CLUTCH AND PUMP ASSEMBLY 12 L/min at 210 bar.....	485
F24V ELECTRO MAGNETIC CLUTCH AND PUMP ASSEMBLY 25.5 L/min at 210 bar.....	485
24V ELECTRO MAGNETIC CLUTCH AND PUMP ASSEMBLY 33 L/min at 210 bar.....	485
24V ELECTRO MAGNETIC CLUTCH AND PUMP ASSEMBLY 39 L/min at 210 bar.....	486
24V ELECTRO MAGNETIC CLUTCH AND PUMP ASSEMBLY 49.5 L/min at 210 bar.....	486
24V ELECTRO MAGNETIC CLUTCH AND PUMP ASSEMBLY 58.5 L/min at 210 bar.....	486
24V ELECTRO MAGNETIC CLUTCH AND PUMP ASSEMBLY 66.9 L/min at 210 bar.....	486
24V ELECTRO MAGNETIC CLUTCH AND PUMP ASSEMBLY 87.9 L/min at 210 bar.....	487
24V ELECTRO MAGNETIC CLUTCH AND PUMP ASSEMBLY 98.7 L/min at 210 bar.....	487
24V ELECTRO MAGNETIC CLUTCH AND PUMP ASSEMBLY 109.2 L/min at 210 bar.....	487



FLOWFIT



ELECTRO MAGNETIC CLUTCH AND PUMP ASSEMBLIES

The most powerful range in the uk up to 60 danm off the shelf.

Brand new electromagnetic clutch and pump assemblies are commonly used in marine, agricultural, offroad and general industrial applications such as remote hydraulics in service trucks, boats, trucks with automatic transmissions, farm tractors and snow ploughs.

During assembly please make sure there is no oil or grease traces on the pulley surfaces which must be completely dry and clean.

Running in of the full range of electromagnetic clutches is required to obtain the desired rated torque value. Running in is carried out by engaging and disengaging clutch at high speed several times with the pump in the unload position.

When assembling the electromagnetic clutches with any front driving flange please check for correct coupling alignment, but do not exceed rated torque because this would cause slippage of the contact surface where the belts are located. This stage must not last more than 5 seconds as coils within the clutch will burn out.

Mounted inline with engine belt 2 groove pulley

Clockwise rotation - Max 5000rpm

Available electrical inputs available are 12 volts 4.55A and 24v 2.54A

Operating temperature 80 degrees celsius, -20 degrees celsius

Nominal torque, flow rates and voltages shown in part number description.

For lower/higher flow rates and lower /higher speeds please contact us for technical clearance as this will make a difference to the torque suitability of the clutch.

FLOWFIT HYDRAULIC 12V ELECTRO MAGNETIC CLUTCH AND PUMP ASSEMBLY 12 L/min at 210 bar

FLOWFIT



MOUNTED INLINE ENGINE BELT 2 GOOVE PULLEY, CLOCKWISE ROTATION- MAX 3000RPM, AVAILABLE ELECTRICAL 12V INPUT AT 5A NOMINAL TORQUE, FLOW RATES AND VOLTAGES SHOWN IN FULL BELOW.

Hydraulic Flow rate of 12L/min at 3000 rpm with 4cc group 2 pump.

PART NO.	FLOW @ 3000RPM L/min	WORKING PRESSURE BAR	VOLTS vdc	AMP A	NOMINAL TORQUE daNm	GRP 2 GEAR PUMP cc/rev	PRICE
ZZ000444	12	210	12	5	10	4	£660.94

FURTHER INFORMATION AND TECHNICAL 12V ELECTRO MAGNETIC CLUTCH AND PUMP ASSEMBLY PDF IS AVAILABLE TO DOWNLOAD FROM OUR WEBSITE AT www.flowfitonline.com

FLOWFIT HYDRAULIC 12V ELECTRO MAGNETIC CLUTCH AND PUMP ASSEMBLY 25.5 L/min at 210 bar

FLOWFIT



MOUNTED INLINE ENGINE BELT 2 GOOVE PULLEY, CLOCKWISE ROTATION- MAX 3000RPM, AVAILABLE ELECTRICAL 12V INPUT AT 5A NOMINAL TORQUE, FLOW RATES AND VOLTAGES SHOWN IN FULL BELOW.

Hydraulic Flow rate of 25.5 L/min at 3000 rpm with 8.5cc group 2 pump.

PART NO.	FLOW @ 3000RPM L/min	WORKING PRESSURE BAR	VOLTS vdc	AMP A	NOMINAL TORQUE daNm	GRP 2 GEAR PUMP cc/rev	PRICE
ZZ000445	25.5	210	12	5	14	8.5	£660.94

FURTHER INFORMATION AND TECHNICAL 12V ELECTRO MAGNETIC CLUTCH AND PUMP ASSEMBLY PDF IS AVAILABLE TO DOWNLOAD FROM OUR WEBSITE AT www.flowfitonline.com

FLOWFIT HYDRAULIC 12V ELECTRO MAGNETIC CLUTCH AND PUMP ASSEMBLY 39 L/min at 210 bar

FLOWFIT



MOUNTED INLINE ENGINE BELT 2 GOOVE PULLEY, CLOCKWISE ROTATION- MAX 3000RPM, AVAILABLE ELECTRICAL 12V INPUT AT 5A NOMINAL TORQUE, FLOW RATES AND VOLTAGES SHOWN IN FULL BELOW.

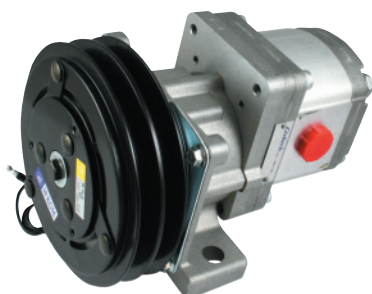
Hydraulic Flow rate of 39 L/min at 3000 rpm with 26cc group 2 pump.

PART NO.	FLOW @ 3000RPM L/min	WORKING PRESSURE BAR	VOLTS vdc	AMP A	NOMINAL TORQUE daNm	GRP 2 GEAR PUMP cc/rev	PRICE
ZZ000436	39	210	12	5	14	26	£665.04

FURTHER INFORMATION AND TECHNICAL 12V ELECTRO MAGNETIC CLUTCH AND PUMP ASSEMBLY PDF IS AVAILABLE TO DOWNLOAD FROM OUR WEBSITE AT www.flowfitonline.com

FLOWFIT HYDRAULIC 12V ELECTRO MAGNETIC CLUTCH AND PUMP ASSEMBLY 49.5 L/min at 210 bar

FLOWFIT



MOUNTED INLINE ENGINE BELT 2 GOOVE PULLEY, CLOCKWISE ROTATION- MAX 3000RPM, AVAILABLE ELECTRICAL 12V INPUT AT 3A NOMINAL TORQUE, FLOW RATES AND VOLTAGES SHOWN IN FULL BELOW.

Hydraulic Flow rate of 49.5 L/min at 3000 rpm with 16.5cc group 2 pump.

PART NO.	FLOW @ 3000RPM L/min	WORKING PRESSURE BAR	VOLTS vdc	AMP A	NOMINAL TORQUE daNm	GRP 2 GEAR PUMP cc/rev	PRICE
ZZ000449	49.5	210	12	5	14	16.5	£720.81

FURTHER INFORMATION AND TECHNICAL 12V ELECTRO MAGNETIC CLUTCH AND PUMP ASSEMBLY PDF IS AVAILABLE TO DOWNLOAD FROM OUR WEBSITE AT www.flowfitonline.com

FLOWFIT HYDRAULIC 12V ELECTRO MAGNETIC CLUTCH AND PUMP ASSEMBLY 58.5 L/min at 210 bar

FLOWFIT



MOUNTED INLINE ENGINE BELT 2 GOOVE PULLEY, CLOCKWISE ROTATION- MAX 3000RPM, AVAILBLE ELECTRICAL 12V INPUTS AT 5A NOMINAL TORQUE, FLOW RATES AND VOLTAGES SHOWN IN FULL BELOW.

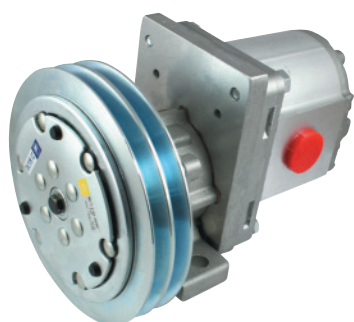
Hydraulic Flow rate of 58.5 L/min at 3000 rpm with 19.5cc group 2 pump.

PART NO.	FLOW @ 3000RPM L/min	WORKING PRESSURE BAR	VOLTS vdc	AMP A	NOMINAL TORQUE daNm	GRP 2 GEAR PUMP cc/rev	PRICE
ZZ000450	58.5	210	12	5	14	19.5	£727.76

FURTHER INFORMATION AND TECHNICAL 12V ELECTRO MAGNETIC CLUTCH AND PUMP ASSEMBLY PDF IS AVAILABLE TO DOWNLOAD FROM OUR WEBSITE AT www.flowfitonline.com

FLOWFIT HYDRAULIC 12V ELECTRO MAGNETIC CLUTCH AND PUMP ASSEMBLY 66.9 L/min at 210 bar

FLOWFIT



MOUNTED INLINE ENGINE BELT 2 GOOVE PULLEY, CLOCKWISE ROTATION- MAX 3000RPM, AVAILBLE ELECTRICAL 12V INPUT AT 5A NOMINAL TORQUE, FLOW RATES AND VOLTAGES SHOWN IN FULL BELOW.

Hydraulic Flow rate of 66.9 L/min at 3000 rpm with 22.3cc group 3 pump.

PART NO.	FLOW @ 3000RPM L/min	WORKING PRESSURE BAR	VOLTS vdc	AMP A	NOMINAL TORQUE daNm	GRP 3 GEAR PUMP cc/rev	PRICE
ZZ000454	66.9	210	12	5	21	22.3	£1291.00

FURTHER INFORMATION AND TECHNICAL 12V ELECTRO MAGNETIC CLUTCH AND PUMP ASSEMBLY PDF IS AVAILABLE TO DOWNLOAD FROM OUR WEBSITE AT www.flowfitonline.com

FLOWFIT HYDRAULIC 12V ELECTRO MAGNETIC CLUTCH AND PUMP ASSEMBLY 87.9 L/min at 210 bar

FLOWFIT



MOUNTED INLINE ENGINE BELT 2 GOOVE PULLEY, CLOCKWISE ROTATION- MAX 3000RPM, AVAILBLE ELECTRICAL 12V INPUT AT 5A NOMINAL TORQUE, FLOW RATES AND VOLTAGES SHOWN IN FULL BELOW.

Hydraulic Flow rate of 87.9 L/min at 3000 rpm with 29.3cc group 3 pump.

PART NO.	FLOW @ 3000RPM L/min	WORKING PRESSURE BAR	VOLTS vdc	AMP A	NOMINAL TORQUE daNm	GRP 3 GEAR PUMP cc/rev	PRICE
ZZ000455	87.9	210	12	5	21	29.3	£1303.32

FURTHER INFORMATION AND TECHNICAL 12V ELECTRO MAGNETIC CLUTCH AND PUMP ASSEMBLY PDF IS AVAILABLE TO DOWNLOAD FROM OUR WEBSITE AT www.flowfitonline.com

FLOWFIT HYDRAULIC 12V ELECTRO MAGNETIC CLUTCH AND PUMP ASSEMBLY 98.7 L/min at 210 bar

FLOWFIT



MOUNTED INLINE ENGINE BELT 2 GOOVE PULLEY, CLOCKWISE ROTATION- MAX 3000RPM, AVAILBLE ELECTRICAL 12V INPUT AT 5A NOMINAL TORQUE, FLOW RATES AND VOLTAGES SHOWN IN FULL BELOW.

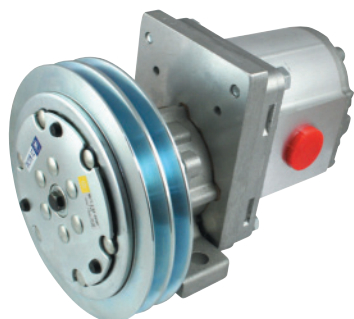
Hydraulic Flow rate of 98.7 L/min at 3000 rpm with 32.9cc group 3 pump.

PART NO.	FLOW @ 3000RPM L/min	WORKING PRESSURE BAR	VOLTS vdc	AMP A	NOMINAL TORQUE daNm	GRP 3 GEAR PUMP cc/rev	PRICE
ZZ000456	98.7	210	12	5	21	32.9	£1303.32

FURTHER INFORMATION AND TECHNICAL 12V ELECTRO MAGNETIC CLUTCH AND PUMP ASSEMBLY PDF IS AVAILABLE TO DOWNLOAD FROM OUR WEBSITE AT www.flowfitonline.com

FLOWFIT HYDRAULIC 12V ELECTRO MAGNETIC CLUTCH AND PUMP ASSEMBLY 109.2 L/min at 210 bar

FLOWFIT



MOUNTED INLINE ENGINE BELT 2 GOOVE PULLEY, CLOCKWISE ROTATION- MAX 3000RPM, AVAILABLE ELECTRICAL 12V INPUT AT 5A NOMINAL TORQUE, FLOW RATES AND VOLTAGES SHOWN IN FULL BELOW.

Hydraulic Flow rate of 109.20 L/min at 3000 rpm with 36.4cc group 3 pump.

PART NO.	FLOW @ 3000RPM L/min	WORKING PRESSURE BAR	VOLTS vdc	AMP A	NOMINAL TORQUE daNm	GRP 3 GEAR PUMP cc/rev	PRICE
ZZ000457	109.2	210	12	5	21	36.4	£1303.32

FURTHER INFORMATION AND TECHNICAL 12V ELECTRO MAGNETIC CLUTCH AND PUMP ASSEMBLY PDF IS AVAILABLE TO DOWNLOAD FROM OUR WEBSITE AT www.flowfitonline.com

FLOWFIT HYDRAULIC 24V ELECTRO MAGNETIC CLUTCH AND PUMP ASSEMBLY 12 L/min at 210 bar

FLOWFIT



MOUNTED INLINE ENGINE BELT 2 GOOVE PULLEY, CLOCKWISE ROTATION- MAX 3000RPM, AVAILABLE ELECTRICAL 12V INPUT AT 5A OR NOMINAL TORQUE, FLOW RATES AND VOLTAGES SHOWN IN FULL BELOW.

Hydraulic Flow rate of 12 L/min at 3000 rpm with 4cc group 2 pump.

PART NO.	FLOW @ 3000RPM L/min	WORKING PRESSURE BAR	VOLTS vdc	AMP A	NOMINAL TORQUE daNm	GRP 2 GEAR PUMP cc/rev	PRICE
ZZ000446	12	210	24	5	10	4	£660.94

FURTHER INFORMATION AND TECHNICAL 24V ELECTRO MAGNETIC CLUTCH AND PUMP ASSEMBLY PDF IS AVAILABLE TO DOWNLOAD FROM OUR WEBSITE AT www.flowfitonline.com

FLOWFIT HYDRAULIC 24V ELECTRO MAGNETIC CLUTCH AND PUMP ASSEMBLY 25.5 L/min at 210 bar

FLOWFIT



MOUNTED INLINE ENGINE BELT 2 GOOVE PULLEY, CLOCKWISE ROTATION- MAX 3000RPM, AVAILABLE ELECTRICAL 24V INPUT AT 3A NOMINAL TORQUE, FLOW RATES AND VOLTAGES SHOWN IN FULL BELOW.

Hydraulic Flow rate of 25.5 L/min at 3000 rpm with 8.5cc group 2 pump.

PART NO.	FLOW @ 3000RPM L/min	WORKING PRESSURE BAR	VOLTS vdc	AMP A	NOMINAL TORQUE daNm	GRP 2 GEAR PUMP cc/rev	PRICE
ZZ000447	25.5	210	24	5	10	8.5	£660.94

FURTHER INFORMATION AND TECHNICAL 24V ELECTRO MAGNETIC CLUTCH AND PUMP ASSEMBLY PDF IS AVAILABLE TO DOWNLOAD FROM OUR WEBSITE AT www.flowfitonline.com

FLOWFIT HYDRAULIC 24V ELECTRO MAGNETIC CLUTCH AND PUMP ASSEMBLY 33 L/min at 210 bar

FLOWFIT



MOUNTED INLINE ENGINE BELT 2 GOOVE PULLEY, CLOCKWISE ROTATION- MAX 3000RPM, AVAILABLE ELECTRICAL 24V INPUT AT 3A NOMINAL TORQUE, FLOW RATES AND VOLTAGES SHOWN IN FULL BELOW.

Hydraulic Flow rate of 33 L/min at 3000 rpm with 11cc group 2 pump.

PART NO.	FLOW @ 3000RPM L/min	WORKING PRESSURE BAR	VOLTS vdc	AMP A	NOMINAL TORQUE daNm	GRP 2 GEAR PUMP cc/rev	PRICE
ZZ000451	33	210	24	5	14	11	£667.09

FURTHER INFORMATION AND TECHNICAL 24V ELECTRO MAGNETIC CLUTCH AND PUMP ASSEMBLY PDF IS AVAILABLE TO DOWNLOAD FROM OUR WEBSITE AT www.flowfitonline.com

FLOWFIT HYDRAULIC 24V ELECTRO MAGNETIC CLUTCH AND PUMP ASSEMBLY 39 L/min at 210 bar

FLOWFIT



MOUNTED INLINE ENGINE BELT 2 GOOVE PULLEY, CLOCKWISE ROTATION-
MAX 3000RPM, AVAILBLE ELECTRICAL 24V INPUT AT 3A NOMINAL TORQUE, FLOW RATES AND VOLTAGES SHOWN IN FULL BELOW.

Hydraulic Flow rate of 39 L/min at 3000 rpm with 26cc group 2 pump.

PART NO.	FLOW @ 3000RPM L/min	WORKING PRESSURE BAR	VOLTS vdc	AMP A	NOMINAL TORQUE daNm	GRP 2 GEAR PUMP cc/rev	PRICE
ZZ000437	39	210	24	5	14	26	£665.04

FURTHER INFORMATION AND TECHNICAL 24V ELECTRO MAGNETIC CLUTCH AND PUMP ASSEMBLY PDF IS AVAILABLE TO DOWNLOAD FROM OUR WEBSITE AT www.flowfitonline.com

FLOWFIT HYDRAULIC 24V ELECTRO MAGNETIC CLUTCH AND PUMP ASSEMBLY 49.5 L/min at 210 bar

FLOWFIT



MOUNTED INLINE ENGINE BELT 2 GOOVE PULLEY, CLOCKWISE ROTATION-
MAX 500RPM, AVAILBLE ELECTRICAL 24V INPUT AT 3A NOMINAL TORQUE, FLOW RATES AND VOLTAGES SHOWN IN FULL BELOW.

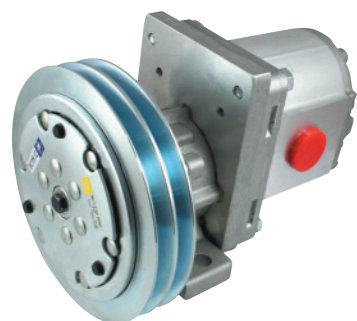
Hydraulic Flow rate of 49.5 L/min at 3000 rpm with 16.5cc group 2 pump.

PART NO.	FLOW @ 3000RPM L/min	WORKING PRESSURE BAR	VOLTS vdc	AMP A	NOMINAL TORQUE daNm	GRP 2 GEAR PUMP cc/rev	PRICE
ZZ000452	49.5	210	24	5	14	16.5	£720.81

FURTHER INFORMATION AND TECHNICAL 24V ELECTRO MAGNETIC CLUTCH AND PUMP ASSEMBLY PDF IS AVAILABLE TO DOWNLOAD FROM OUR WEBSITE AT www.flowfitonline.com

FLOWFIT HYDRAULIC 24V ELECTRO MAGNETIC CLUTCH AND PUMP ASSEMBLY 58.5 L/min at 210 bar

FLOWFIT



MOUNTED INLINE ENGINE BELT 2 GOOVE PULLEY, CLOCKWISE ROTATION-
MAX 3000RPM, AVAILBLE ELECTRICAL 24V INPUT AT 3A NOMINAL TORQUE, FLOW RATES AND VOLTAGES SHOWN IN FULL BELOW.

Hydraulic Flow rate of 58.5 L/min at 3000 rpm with 19.5cc group 3 pump.

PART NO.	FLOW @ 3000RPM L/min	WORKING PRESSURE BAR	VOLTS vdc	AMP A	NOMINAL TORQUE daNm	GRP 3 GEAR PUMP cc/rev	PRICE
ZZ000453	58.5	210	24	5	21	19.5	£727.76

FURTHER INFORMATION AND TECHNICAL 24V ELECTRO MAGNETIC CLUTCH AND PUMP ASSEMBLY PDF IS AVAILABLE TO DOWNLOAD FROM OUR WEBSITE AT www.flowfitonline.com

FLOWFIT HYDRAULIC 24V ELECTRO MAGNETIC CLUTCH AND PUMP ASSEMBLY 66.9 L/min at 210 bar

FLOWFIT



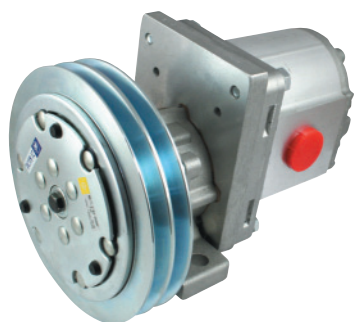
MOUNTED INLINE ENGINE BELT 2 GOOVE PULLEY, CLOCKWISE ROTATION-
MAX 3000RPM, AVAILBLE ELECTRICAL 24V INPUT AT 3A NOMINAL TORQUE, FLOW RATES AND VOLTAGES SHOWN IN FULL BELOW.

Hydraulic Flow rate of 66.9 L/min at 3000 rpm with 22.3cc group 3 pump.

PART NO.	FLOW @ 3000RPM L/min	WORKING PRESSURE BAR	VOLTS vdc	AMP A	NOMINAL TORQUE daNm	GRP 3 GEAR PUMP cc/rev	PRICE
ZZ000459	66.9	210	24	5	21	22.3	£1225.48

FURTHER INFORMATION AND TECHNICAL 24V ELECTRO MAGNETIC CLUTCH AND PUMP ASSEMBLY PDF IS AVAILABLE TO DOWNLOAD FROM OUR WEBSITE AT www.flowfitonline.com

FLOWFIT HYDRAULIC 24V ELECTRO MAGNETIC CLUTCH AND PUMP ASSEMBLY 87.9 L/min at 210 bar



MOUNTED INLINE ENGINE BELT 2 GOOVE PULLEY, CLOCKWISE ROTATION-
MAX 3000RPM, AVAILBLE ELECTRICAL 24V INPUT AT 3A NOMINAL
TORQUE, FLOW RATES AND VOLTAGES SHOWN IN FULL BELOW.

Hydraulic Flow rate of 87.9 L/min at 3000 rpm with 29.3cc group 3 pump.

PART NO.	FLOW @ 3000RPM L/min	WORKING PRESSURE BAR	VOLTS vdc	AMP A	NOMINAL TORQUE daNm	GRP 3 GEAR PUMP cc/rev	PRICE
ZZ000460	87.9	210	24	5	21	29.3	£1303.32

FURTHER INFORMATION AND TECHNICAL 24V ELECTRO MAGNETIC CLUTCH AND PUMP ASSEMBLY
PDF IS AVAILABLE TO DOWNLOAD FROM OUR WEBSITE AT www.flowfitonline.com

FLOWFIT HYDRAULIC 24V ELECTRO MAGNETIC CLUTCH AND PUMP ASSEMBLY 98.7 L/min at 210 bar



MOUNTED INLINE ENGINE BELT 2 GOOVE PULLEY, CLOCKWISE ROTATION-
MAX 3000RPM, AVAILBLE ELECTRICAL 24V INPUTS AT 3A NOMINAL
TORQUE, FLOW RATES AND VOLTAGES SHOWN IN FULL BELOW.

Hydraulic Flow rate of 98.7 L/min at 3000 rpm with 32.9cc group 3 pump.

PART NO.	FLOW @ 3000RPM L/min	WORKING PRESSURE BAR	VOLTS vdc	AMP A	NOMINAL TORQUE daNm	GRP 3 GEAR PUMP cc/rev	PRICE
ZZ000461	98.7	210	24	5	21	32.9	£1303.32

FURTHER INFORMATION AND TECHNICAL 24V ELECTRO MAGNETIC CLUTCH AND PUMP ASSEMBLY
PDF IS AVAILABLE TO DOWNLOAD FROM OUR WEBSITE AT www.flowfitonline.com

FLOWFIT HYDRAULIC 24V ELECTRO MAGNETIC CLUTCH AND PUMP ASSEMBLY 109.2 L/min at 210 bar



MOUNTED INLINE ENGINE BELT 2 GOOVE PULLEY, CLOCKWISE ROTATION-
MAX 3000RPM, AVAILBLE ELECTRICAL 24V INPUT AT 3A NOMINAL
TORQUE, FLOW RATES AND VOLTAGES SHOWN IN FULL BELOW.

Hydraulic Flow rate of 109.2 L/min at 3000 rpm with 36.4cc group 3 pump.

PART NO.	FLOW @ 3000RPM L/min	WORKING PRESSURE BAR	VOLTS vdc	AMP A	NOMINAL TORQUE daNm	GRP 3 GEAR PUMP cc/rev	PRICE
ZZ000462	109.2	210	24	5	21	36.4	£1303.32

FURTHER INFORMATION AND TECHNICAL 24V ELECTRO MAGNETIC CLUTCH AND PUMP ASSEMBLY
PDF IS AVAILABLE TO DOWNLOAD FROM OUR WEBSITE AT www.flowfitonline.com