

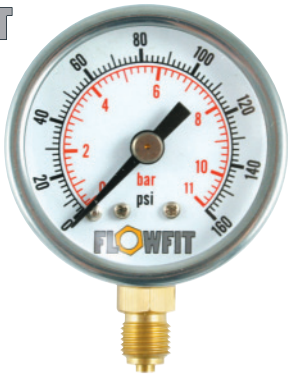
PRESSURE GAUGES

PNEUMATIC SPECIFICATION 40mm BASE ENTRY604
 PNEUMATIC SPECIFICATION 40mm REAR ENTRY604
 PNEUMATIC SPECIFICATION 50mm BASE ENTRY604
 PNEUMATIC SPECIFICATION 50mm REAR ENTRY604
 HYDRAULIC SPECIFICATION 63mm BASE ENTRY605
 HYDRAULIC SPECIFICATION 63mm REAR ENTRY605
 HYDRAULIC SPECIFICATION 100mm BASE ENTRY606

HYDRAULIC SPECIFICATION 100mm REAR ENTRY606
 GAUGE ISOLATOR VALVES607
 FT290 IN LINE GAUGE ISOLATOR NEEDLE VALVES607
 FT291 90° ANGLE GAUGE ISOLATOR NEEDLE VALVES.....607
 FT292 PUSH-BUTTON GAUGE ISOLATOR VALVES607
 FT299 PRESSURE GAUGE SWIVEL ADAPTORS - 400 BAR RATED..607



FLOWFIT



Dual scale psi (outer) in black and bar (inner) in red

PNEUMATIC SPECIFICATION 40mm BASE ENTRY PRESSURE GAUGE

Options: Throttle Screw, Customised Dials
Application: For General Purpose, Standard Duty in Non-Corrosive Environments.
Case: Painted Black Steel.
Bezel: Painted Black Steel, Chromed or Snap On Plastic Window.
Window: Glass or Polycarbonate

Wetted Parts: Brass
Ranges: -30"Hg, 1bar Vacuum to 10,000 PSI, 700 bar
Accuracy Class: ASME B40.1-1991 B GRADE
Connections: 1/8" BSPT bottom entry
Temp. Range: Ambient Temperature -25°C to 60°C
Minimum temperature should not be less than or equal to the freezing point of the process fluid

ORDER CODE	DESCRIPTION	PRESSURE RANGE	PRICE
PGP40B015PSI	BOTTOM ENTRY DRY	0-15PSI (1 BAR)	£9.11
PGP40B030PSI	BOTTOM ENTRY DRY	0-30PSI (2 BAR)	£9.11
PGP40B060PSI	BOTTOM ENTRY DRY	0-60PSI (4 BAR)	£9.11
PGP40B0100PSI	BOTTOM ENTRY DRY	0-100PSI (7 BAR)	£9.11
PGP40B0160PSI	BOTTOM ENTRY DRY	0-160PSI (11 BAR)	£9.11
PGP40B0200PSI	BOTTOM ENTRY DRY	0-200PSI (14 BAR)	£9.11
PGP40B0300PSI	BOTTOM ENTRY DRY	0-300PSI (21 BAR)	£9.11



Dual scale psi (outer) in black and bar (inner) in red

PNEUMATIC SPECIFICATION 40mm REAR ENTRY PRESSURE GAUGE

Options: Throttle Screw, Customised Dials
Application: For General Purpose, Standard Duty in Non-Corrosive Environments.
Case: Painted Black Steel.
Bezel: Painted Black Steel, Chromed or Snap On Plastic Window.
Window: Glass or Polycarbonate

Wetted Parts: Brass
Accuracy Class: ASME B40.1-1991 B GRADE
Ranges: -30"Hg, 1bar Vacuum to 10,000 PSI, 700 bar
Connections: 1/8" BSPT centre back entry
Temp. Range: Ambient Temperature -25°C to 60°C
Minimum temperature should not be less than or equal to the freezing point of the process fluid

ORDER CODE	DESCRIPTION	PRESSURE RANGE	PRICE
PGP40R015PSI	REAR ENTRY DRY	0-15PSI (1 BAR)	£9.11
PGP40R030PSI	REAR ENTRY DRY	0-30PSI (2 BAR)	£9.11
PGP40R060PSI	REAR ENTRY DRY	0-60PSI (4BAR)	£9.11
PGP40R0100PSI	REAR ENTRY DRY	0-100PSI (7 BAR)	£9.11
PGP40R0160PSI	REAR ENTRY DRY	0-160PSI (11 BAR)	£9.11
PGP40R0200PSI	REAR ENTRY DRY	0-200PSI (14 BAR)	£9.11
PGP40R0300PSI	REAR ENTRY DRY	0-300PSI (21 BAR)	£9.11
PGP40R0400PSI	REAR ENTRY DRY	0-400PSI (28 BAR)	£9.11



Dual scale psi (outer) in black and bar (inner) in red

PNEUMATIC SPECIFICATION 50mm BASE ENTRY PRESSURE GAUGE

Options: Throttle Screw, Customised Dials
Application: For General Purpose, Standard Duty in Non-Corrosive Environments.
Case: Painted Black Steel.
Bezel: Painted Black Steel, Chromed or Snap On Plastic Window.
Window: Glass or Polycarbonate

Wetted Parts: Brass
Accuracy Class: ASME B40.1-1991 B GRADE
Ranges: -30"Hg, 1bar Vacuum to 10,000 PSI, 700 bar
Connections: 1/4" BSPT bottom entry
Temp. Range: Ambient Temperature -25°C to 60°C
Minimum temperature should not be less than or equal to the freezing point of the process fluid

ORDER CODE	DESCRIPTION	PRESSURE RANGE	PRICE
PGP50B015PSI	BOTTOM ENTRY DRY	0-15PSI (1 BAR)	£9.11
PGP50B030PSI	BOTTOM ENTRY DRY	0-30PSI (2 BAR)	£9.11
PGP50B060PSI	BOTTOM ENTRY DRY	0-60PSI (4BAR)	£9.11
PGP50B0100PSI	BOTTOM ENTRY DRY	0-100PSI (7 BAR)	£9.11
PGP50B0160PSI	BOTTOM ENTRY DRY	0-160PSI (11 BAR)	£9.11
PGP50B0200PSI	BOTTOM ENTRY DRY	0-200PSI (14 BAR)	£9.11
PGP50B0300PSI	BOTTOM ENTRY DRY	0-300PSI (21 BAR)	£9.11
PGP50B0400PSI	BOTTOM ENTRY DRY	0-400PSI (28 BAR)	£9.11



Dual scale psi (outer) in black and bar (inner) in red

PNEUMATIC SPECIFICATION 50mm REAR ENTRY PRESSURE GAUGE

Options: Throttle Screw, Customised Dials
Application: For General Purpose, Standard Duty in Non-Corrosive Environments.
Case: Painted Black Steel.
Bezel: Painted Black Steel, Chromed or Snap On Plastic Window.
Window: Glass or Polycarbonate

Wetted Parts: Brass
Accuracy Class: ASME B40.1-1991 B GRADE
Ranges: -30"Hg, 1bar Vacuum to 10,000 PSI, 700 bar
Connections: 1/4" BSPT centre back entry
Temp. Range: Ambient Temperature -25°C to 60°C
Minimum temperature should not be less than or equal to the freezing point of the process fluid

ORDER CODE	DESCRIPTION	PRESSURE RANGE	PRICE
PGP50R015PSI	REAR ENTRY DRY	0-15PSI (1 BAR)	£9.11
PGP50R030PSI	REAR ENTRY DRY	0-30PSI (2 BAR)	£9.11
PGP50R060PSI	REAR ENTRY DRY	0-60PSI (4BAR)	£9.11
PGP50R0100PSI	REAR ENTRY DRY	0-100PSI (7 BAR)	£9.11
PGP50R0160PSI	REAR ENTRY DRY	0-160PSI (11 BAR)	£9.11
PGP50R0200PSI	REAR ENTRY DRY	0-200PSI (14 BAR)	£9.11
PGP50R0300PSI	REAR ENTRY DRY	0-300PSI (21 BAR)	£9.11
PGP50R0400PSI	REAR ENTRY DRY	0-400PSI (28 BAR)	£9.11



Dual scale psi (outer) in black and bar (inner) in red



Rubber Protective Gauge Covers

HYDRAULIC SPECIFICATION 63mm BASE ENTRY PRESSURE GAUGE

Options: Throttle Screw, Customised Dials, SS Wetted Parts
Application: For Extended Life, Harsh, and Vibration Environments.
Case: 304 Stainless Steel
Bezel: 304 Stainless Steel
Window: Polycarbonate
Wetted Parts: Brass / Bronze

Damping Fluid: Glycerine
Ranges: -30"Hg, 1bar Vacuum to 10,000 PSI, 700 bar
Accuracy Class: ASME B40.1-1991 B GRADE
Connections: 1/4" BSP bottom entry with spigot to EN837
Temp. Range: Ambient Temperature -25°C to 60°C
Minimum temperature should not be less than or equal to the freezing point of the process fluid.

ORDER CODE	DESCRIPTION	PRESSURE RANGE		PRICE
PG63B-030HG	BASE ENTRY GLY FILLED	-30HG	(-1 BAR)	£17.31
PG63B015PSI	BASE ENTRY GLY FILLED	0-15PSI	(1 BAR)	£17.31
PG63B030PSI	BASE ENTRY GLY FILLED	0-30PSI	(2 BAR)	£17.31
PG63B060PSI	BASE ENTRY GLY FILLED	0-60PSI	(4 BAR)	£17.31
PG63B0100PSI	BASE ENTRY GLY FILLED	0-100PSI	(7 BAR)	£17.31
PG63B0160PSI	BASE ENTRY GLY FILLED	0-160PSI	(11 BAR)	£17.31
PG63B0200PSI	BASE ENTRY GLY FILLED	0-200PSI	(14 BAR)	£17.31
PG63B0300PSI	BASE ENTRY GLY FILLED	0-300PSI	(21 BAR)	£17.31
PG63B0400PSI	BASE ENTRY GLY FILLED	0-400PSI	(28 BAR)	£17.31
PG63B0500PSI	BASE ENTRY GLY FILLED	0-500PSI	(28 BAR)	£17.31
PG63B0600PSI	BASE ENTRY GLY FILLED	0-600PSI	(41 BAR)	£17.31
PG63B01000PSI	BASE ENTRY GLY FILLED	0-1000PSI	(70 BAR)	£17.31
PG63B01500PSI	BASE ENTRY GLY FILLED	0-1500PSI	(100 BAR)	£17.31
PG63B02000PSI	BASE ENTRY GLY FILLED	0-2000PSI	(138 BAR)	£17.31
PG63B03000PSI	BASE ENTRY GLY FILLED	0-3000PSI	(207 BAR)	£17.31
PG63B04000PSI	BASE ENTRY GLY FILLED	0-4000PSI	(275 BAR)	£17.31
PG63B05000PSI	BASE ENTRY GLY FILLED	0-5000PSI	(344 BAR)	£17.31
PG63B06000PSI	BASE ENTRY GLY FILLED	0-6000PSI	(414 BAR)	£17.31
PG63B08500PSI	BASE ENTRY GLY FILLED	0-8500PSI	(586 BAR)	£15.88
PG63B010000PSI	BASE ENTRY GLY FILLED	0-10000PSI	(690 BAR)	£17.31
PG63B014500PSI	BASE ENTRY GLY FILLED	0-14500PSI	(1000 BAR)	£145.77
PG63B-30HG060PSI	BASE ENTRY GLY FILLED	-30HG +60 PSI	(-1/+4 BAR)	£17.31

OPTIONAL EXTRAS FOR 63mm & 100mm GAUGES		
ORDER CODE	DESCRIPTION	PRICE
CAL163100	CALIBRATION C/W CERTIFICATE	£70.87
PG63COVER	RUBBER PROTECTIVE COVER	£13.49



Dual scale psi (outer) in black and bar (inner) in red



Rubber Protective Cover

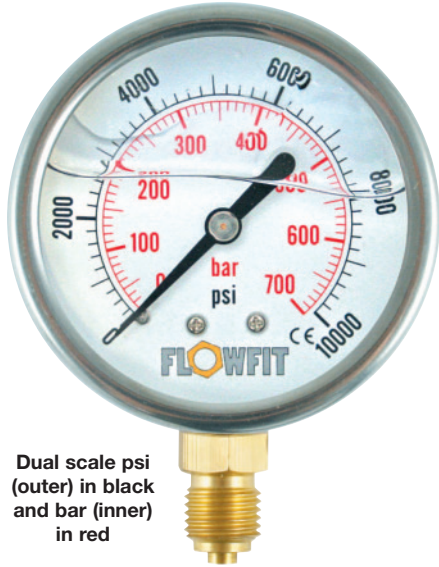
HYDRAULIC SPECIFICATION 63mm REAR ENTRY PRESSURE GAUGE

Options: Throttle Screw, Customised Dials, SS Wetted Parts
Application: For Extended Life, Harsh, and Vibration Environments.
Case: 304 Stainless Steel
Bezel: 304 Stainless Steel
Window: Polycarbonate
Wetted Parts: Brass / Bronze

Damping Fluid: Glycerine
Accuracy Class: ASME B40.1-1991 B GRADE
Ranges: -30"Hg, 1bar Vacuum to 10,000 PSI, 700 bar
Connections: 1/4" BSP centre back entry with spigot to EN837
Temp. Range: Ambient Temperature -25°C to 60°C
Minimum temperature should not be less than or equal to the freezing point of the process fluid.

ORDER CODE	DESCRIPTION	PRESSURE RANGE		PRICE
PG63R-30HG	REAR ENTRY GLY FILLED	-30HG	(-1 BAR)	£20.04
PG63R015PSI	REAR ENTRY GLY FILLED	0-15PSI	(1 BAR)	£20.04
PG63R030PSI	REAR ENTRY GLY FILLED	0-30PSI	(2 BAR)	£20.04
PG63R060PSI	REAR ENTRY GLY FILLED	0-60PSI	(4 BAR)	£20.04
PG63R0100PSI	REAR ENTRY GLY FILLED	0-100PSI	(7 BAR)	£20.04
PG63R0160PSI	REAR ENTRY GLY FILLED	0-160PSI	(11 BAR)	£20.04
PG63R0200PSI	REAR ENTRY GLY FILLED	0-200PSI	(14 BAR)	£20.04
PG63R0300PSI	REAR ENTRY GLY FILLED	0-300PSI	(21 BAR)	£20.04
PG63R0400PSI	REAR ENTRY GLY FILLED	0-400PSI	(28 BAR)	£20.04
PG63R0500PSI	REAR ENTRY GLY FILLED	0-500PSI	(34 BAR)	£20.04
PG63R0600PSI	REAR ENTRY GLY FILLED	0-600PSI	(41 BAR)	£20.04
PG63R01000PSI	REAR ENTRY GLY FILLED	0-1000PSI	(70 BAR)	£20.04
PG63R01500PSI	REAR ENTRY GLY FILLED	0-1500PSI	(100 BAR)	£20.04
PG63R02000PSI	REAR ENTRY GLY FILLED	0-2000PSI	(138 BAR)	£20.04
PG63R03000PSI	REAR ENTRY GLY FILLED	0-3000PSI	(207 BAR)	£20.04
PG63R04000PSI	REAR ENTRY GLY FILLED	0-4000PSI	(275 BAR)	£20.04
PG63R05000PSI	REAR ENTRY GLY FILLED	0-5000PSI	(334 BAR)	£20.04
PG63R06000PSI	REAR ENTRY GLY FILLED	0-6000PSI	(414 BAR)	£20.04
PG63R08500PSI	REAR ENTRY GLY FILLED	0-8500PSI	(586 BAR)	£20.04
PG63R010000PSI	REAR ENTRY GLY FILLED	0-10000PSI	(690 BAR)	£20.04
PG63R014500PSI	REAR ENTRY GLY FILLED	0-14500PSI	(1000 BAR)	£145.77
PG63R-30HG060PSI	REAR ENTRY GLY FILLED	-30HG +60 PSI	(-1/+4 BAR)	£20.04

OPTIONAL EXTRAS		
ORDER CODE	DESCRIPTION	PRICE
PG63F	3 POSITION FACE FIXING	£8.19
PG63RCLAMPS	REAR CLAMPS TO SUIT 63MM REAR ENTRY	£6.56
PG63COVER	RUBBER PROTECTIVE COVER	£14.58



Dual scale psi (outer) in black and bar (inner) in red



Rubber Protective Cover

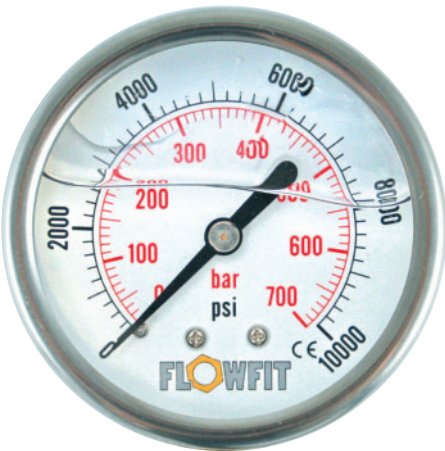
HYDRAULIC SPECIFICATION 100mm BASE ENTRY PRESSURE GAUGE

Options: Throttle Screw, Customised Dials, SS Wetted Parts
Application: For Extended Life, Harsh, and Vibration Environments.
Case: 304 Stainless Steel
Bezel: 304 Stainless Steel
Window: Polycarbonate
Wetted Parts: Brass / Bronze

Damping Fluid: Glycerine
Ranges: -30"Hg, 1bar Vacuum to 10,000 PSI, 700 bar
Accuracy Class: ASME B40.1-1991 A GRADE
Connections: 1/2" BSP bottom entry with spigot to EN837
Temp. Range: Ambient Temperature -25°C to 60°C
Minimum temperature should not be less than or equal to the freezing point of the process fluid.

ORDER CODE	DESCRIPTION	PRESSURE RANGE		PRICE
PG100B-30HG	BASE ENTRY GLY FILLED	-30HG	(-1 BAR)	£87.83
PG100B015PSI	BASE ENTRY GLY FILLED	0-15PSI	(1 BAR)	£87.83
PG100B030PSI	BASE ENTRY GLY FILLED	0-30PSI	(2 BAR)	£87.83
PG100B060PSI	BASE ENTRY GLY FILLED	0-60PSI	(4 BAR)	£87.83
PG100B0100PSI	BASE ENTRY GLY FILLED	0-100PSI	(7 BAR)	£87.83
PG100B0160PSI	BASE ENTRY GLY FILLED	0-160PSI	(11 BAR)	£87.83
PG100B0200PSI	BASE ENTRY GLY FILLED	0-200PSI	(14 BAR)	£87.83
PG100B0300PSI	BASE ENTRY GLY FILLED	0-300PSI	(21 BAR)	£87.83
PG100B0400PSI	BASE ENTRY GLY FILLED	0-400PSI	(28 BAR)	£87.83
PG100B0500PSI	BASE ENTRY GLY FILLED	0-500PSI	(34 BAR)	£87.83
PG100B0600PSI	BASE ENTRY GLY FILLED	0-600PSI	(41 BAR)	£87.83
PG100B01000PSI	BASE ENTRY GLY FILLED	0-1000PSI	(70 BAR)	£87.83
PG100B01500PSI	BASE ENTRY GLY FILLED	0-1500PSI	(103 BAR)	£87.83
PG100B02000PSI	BASE ENTRY GLY FILLED	0-2000PSI	(138 BAR)	£87.83
PG100B03000PSI	BASE ENTRY GLY FILLED	0-3000PSI	(207 BAR)	£87.83
PG100B04000PSI	BASE ENTRY GLY FILLED	0-4000PSI	(275 BAR)	£87.83
PG100B05000PSI	BASE ENTRY GLY FILLED	0-5000PSI	(344 BAR)	£87.83
PG100B06000PSI	BASE ENTRY GLY FILLED	0-6000PSI	(414 BAR)	£87.83
PG100B08500PSI	BASE ENTRY GLY FILLED	0-8500PSI	(586 BAR)	£87.83
PG100B010000PSI	BASE ENTRY GLY FILLED	0-10000PSI	(690 BAR)	£87.83
PG100B014500PSI	BASE ENTRY GLY FILLED	0-14500PSI	(1000 BAR)	£218.67
PG100B-3060PSI	BASE ENTRY GLY FILLED	-30HG +60PSI	(-1/+4 BAR)	£87.83

OPTIONAL EXTRAS FOR 63mm & 100mm GAUGES		
ORDER CODE	DESCRIPTION	PRICE
CAL163100	CALIBRATION C/W CERTIFICATE	£76.53
PG100COVER	RUBBER PROTECTIVE COVER	£38.27



Dual scale psi (outer) in black and bar (inner) in red



Rubber Protective Cover

HYDRAULIC SPECIFICATION 100mm REAR ENTRY PRESSURE GAUGE

Options: Throttle Screw, Customised Dials, SS Wetted Parts
Application: For Extended Life, Harsh, and Vibration Environments.
Case: 304 Stainless Steel
Bezel: 304 Stainless Steel
Window: Polycarbonate
Wetted Parts: Brass / Bronze

Damping Fluid: Glycerine
Accuracy Class: ASME B40.1-1991 A GRADE
Ranges: -30"Hg, 1bar Vacuum to 10,000 PSI, 700 bar
Connections: 1/2" BSP back entry with spigot to EN837
Temp. Range: Ambient Temperature -25°C to 60°C
Minimum temperature should not be less than or equal to the freezing point of the process fluid.

ORDER CODE	DESCRIPTION	PRESSURE RANGE		PRICE
PG100R-30HG	REAR ENTRY GLY FILLED	-30HG	(-1 BAR)	£96.21
PG100R015PSI	REAR ENTRY GLY FILLED	0-15PSI	(1 BAR)	£96.21
PG100R030PSI	REAR ENTRY GLY FILLED	0-30PSI	(2 BAR)	£96.21
PG100R060PSI	REAR ENTRY GLY FILLED	0-60PSI	(4 BAR)	£96.21
PG100R0100PSI	REAR ENTRY GLY FILLED	0-100PSI	(7 BAR)	£96.21
PG100R0160PSI	REAR ENTRY GLY FILLED	0-160PSI	(11 BAR)	£96.21
PG100R0200PSI	REAR ENTRY GLY FILLED	0-200PSI	(14 BAR)	£96.21
PG100R0300PSI	REAR ENTRY GLY FILLED	0-300PSI	(21 BAR)	£96.21
PG100R0400PSI	REAR ENTRY GLY FILLED	0-400PSI	(28 BAR)	£96.21
PG100R0500PSI	REAR ENTRY GLY FILLED	0-500PSI	(34 BAR)	£96.21
PG100R0600PSI	REAR ENTRY GLY FILLED	0-600PSI	(41 BAR)	£96.21
PG100R01000PSI	REAR ENTRY GLY FILLED	0-1000PSI	(70 BAR)	£96.21
PG100R01500PSI	REAR ENTRY GLY FILLED	0-1500PSI	(103 BAR)	£96.21
PG100R02000PSI	REAR ENTRY GLY FILLED	0-2000PSI	(138 BAR)	£96.21
PG100R03000PSI	REAR ENTRY GLY FILLED	0-3000PSI	(207 BAR)	£96.21
PG100R04000PSI	REAR ENTRY GLY FILLED	0-4000PSI	(275 BAR)	£96.21
PG100R05000PSI	REAR ENTRY GLY FILLED	0-5000PSI	(344 BAR)	£96.21
PG100R06000PSI	REAR ENTRY GLY FILLED	0-6000PSI	(414 BAR)	£96.21
PG100R08500PSI	REAR ENTRY GLY FILLED	0-8500PSI	(586 BAR)	£96.21
PG100R010000PSI	REAR ENTRY GLY FILLED	0-10000PSI	(690 BAR)	£96.21
PG100R014500PSI	REAR ENTRY GLY FILLED	0-14500PSI	(1000 BAR)	£291.55

OPTIONAL EXTRAS		
ORDER CODE	DESCRIPTION	PRICE
PG100F	3 POSITION FACE FIXING	£8.19
PG100RCLAMPS	REAR CLAMPS TO SUIT 100MM REAR ENTRY	£6.56
PG100COVER	RUBBER PROTECTIVE COVER	£38.27

GAUGE ISOLATOR VALVES



FT290 IN LINE GAUGE ISOLATOR NEEDLE VALVES

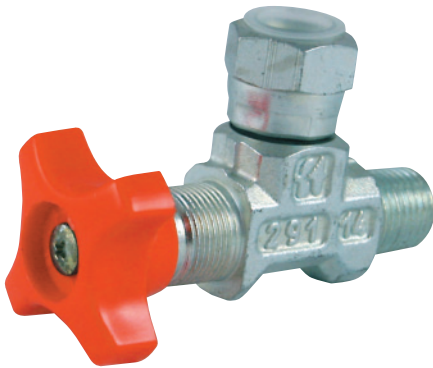
The FT 290 isolator needle valves (in line) are normally used to protect the pressure gauge, since they have the double function of dampening pressure surge during opening and of isolating the pressure-gauge entirely. A rotating (locating) swivel nut allows for accurate pressure gauge orientation.

Suitable for pressure up to 400 bar and temperature from -20 to +100 they can be panel mounted by use of lock nut (G) which may be supplied on request.

ON REQUEST

- Versions with connections Female/Female (01)
- For rigid pipes (04)
- For flexible pipes (05)
- Seals in Viton (V)
- Complete with lock nut (G). Indicate whether KM or hexagonal.

ORDER CODE	PORTS SIZE	MAX WORKING PRESSURE (BAR)	CONNECTION	PRICE
FT290/14	1/4"G	400	FEMALE/FEMALE	£35.37
FT290/12	1/2"G	400	FEMALE/MALE	£71.06



FT291 90° ANGLE GAUGE ISOLATOR NEEDLE VALVES

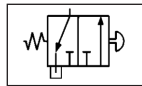
The FT 291 isolator needle valves (angle) are normally used to protect the pressure gauge since they have the double function of dampening pressure surge during opening and of isolating the pressure-gauge entirely. A rotating (locating) swivel nut allows for accurate pressure gauge orientation.

Suitable for pressure up to 400 bar and temperature from -20 to +100 they can be panel mounted by use of lock nut (G) which may be supplied on request.

ON REQUEST

- Versions with connections Female/Female (01)
- For rigid pipes (04)
- For flexible pipes (05)
- Seals in Viton (V)
- Complete with lock nut (G). Indicate whether KM or hexagonal.

ORDER CODE	PORTS SIZE	MAX WORKING PRESSURE (BAR)	CONNECTION	PRICE
FT291-14	1/4"G	400	FEMALE/MALE	£35.37



FT292 PUSH-BUTTON GAUGE ISOLATOR VALVES

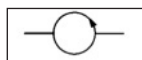
The new FT 292 push-button isolator valves are used to protect pressure-gauges, since they have the double function of dampening the pressure surge during opening and of isolating the pressure-gauge entirely. A reading is obtained by depressing the button.

Releasing the button shuts off the flow to the gauge with residual pressure being automatically drained. The button can be locked to give a continuous reading. The maximum release pressure is 50 Kg/sq cm. Panel mounting facility. Panel mounting fixtures are

supplied only if expressly requested, indicate whether KM or hexagonal. Complete with connector FT 299, they allow for full location orientation for ease of reading. They may be used for working pressures up to 400 bar.

ORDER CODE	PORTS SIZE	MAX WORKING PRESSURE (BAR)	PRICE
FT292	1/4"	400	£75.73

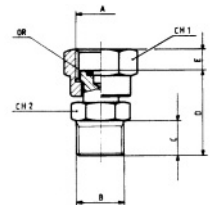
GAUGE ISOLATOR VALVES



FT299 PRESSURE GAUGE SWIVEL ADAPTORS - 400 BAR RATED

Adaptors FT 299 allow the connection of a pressure gauge direct to the system. They provide for correct dial orientation. The adaptor has a built in 'O-ring' seal for use with pressure gauges with sealing nipple to DIN 16288.

The oil flow is restricted to the gauge dampen any pressure shock surges. A gasket, supplied as current product and inserted in the rotating nut, impedes any blow-by between fitting and pressure gauge.



ORDER CODE	PORT A	PORT B	MAX WORKING PRESSURE (BAR)	PRICE
FT299-88	1/8"	1/8"	400	£15.72
FT299-44	1/4"	1/4"	400	£11.91
FT299-42	1/4"	1/2"	400	£13.76
FT299-24	1/2"	1/4"	400	£20.83
FT299-22	1/2"	1/2"	400	£30.14