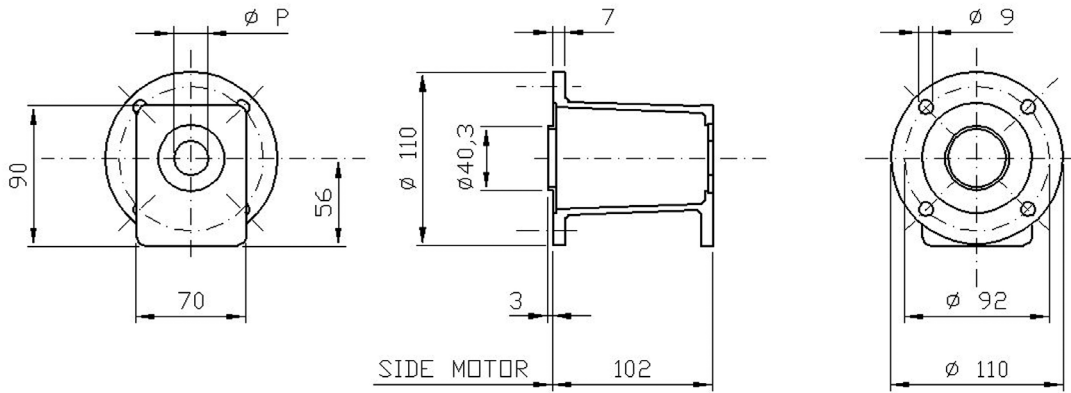


BHE - Bell-housings for petrol engine

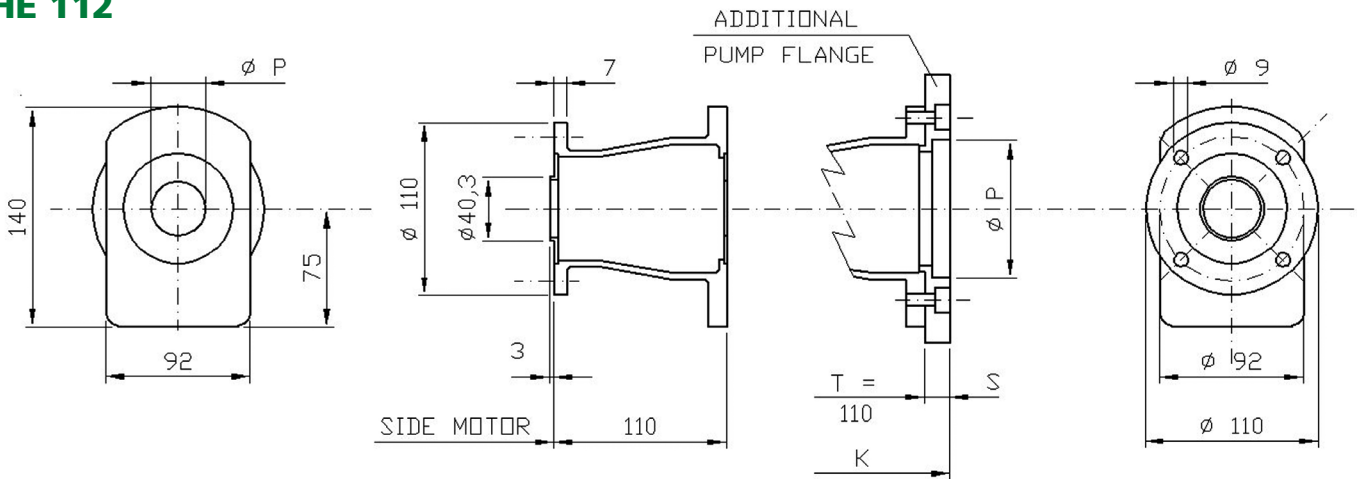
BHE 111



BELL-HOUSING			PUMP HOLE TYPE	PUMP FACE MACHINING					HEIGHT		ELASTIC COUPLING			
CODE	PUMP SIDE ADAPTOR RING	PUMP CODE		NO HOLES	L	M	N	O	P	T	MOTOR HALF	SPIDER	PUMP HALF	MAX TORQUE Nm
BHE111C/01	AR1/01	05M	RECTANGULAR FOR GEAR PUMPS	2	-	66	25,6	M6	22	102	HC1***-050	ER100	HC105A	11,5
BHE111C/01	AR1/01	05T		2	-	66	25,6	M6	22	102			HC105B	
BHE111C/02	AR1/02	1PM		4	52,4	72	26,2	M6	25,4	102			HC101A	
BHE111C/03	AR1/03	1MM		4	56	73	24,5	M6	30	102			HC101B	
BHE111/16	-	1ZB		2	40	40	10,3	M8	32	102			HC101D	

*** Machining code see tab 02.2 pag 20

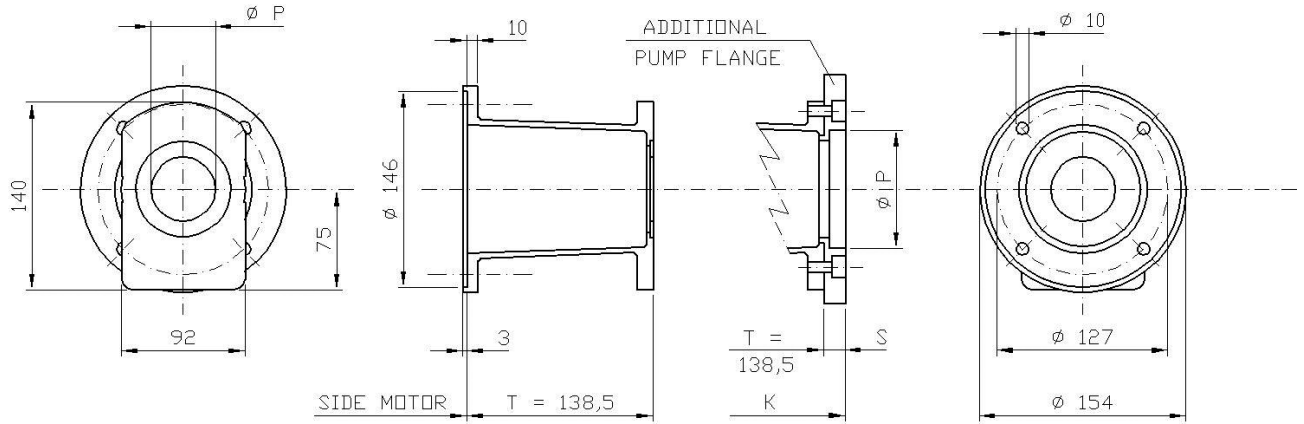
BHE 112



BELL-HOUSING			PUMP CODE	PUMP FACE MACHINING	PUMP FACE MACHINING					HEIGHT				ELASTIC COUPLING					
CODE	ADDITIONAL PUMP FLANGE	PUMP SIDE ADAPTOR RING			N. HOLES	L	M	N	O	P	S	T	K	MOTOR HALF	SPIDER	PUMP HALF	MAX TORQUE Nm		
BHE112C/04	-	AR3/04	02M-02C	RECTANGULAR FOR GEAR PUMPS	4	71,5	96	32,5	M8	36,5	-	110	-	HC3***-048	ER300	HC302A-B	115		
BHE112/17	-	-	2ZF		4	72	100	34,5	M8	80	-	110	-	HC3***-048	ER300	HC302D			
BHE112/17	FR10C/05	AR3/06	03M		4	98,5	128	43	M8	50,8	16	110	126			HC3***-048		ER300	HC303A
BHE112/17	FR10C/06	AR3/06	03C		4	98,5	128	42	M10	50,8	16	110	126			HC3***-048		ER300	HC3***-048
BHE112/17	FR10C/07	AR3/06	03T		4	98,5	137	45	M10	50,8	16	110	126			HC3***-048		ER300	HC3***-048
BHE112/080A	-	-	080A	FOR SAE/ISO STANDARDS	2	100	-	-	M10	80	-	110	-			HC3***-048	ER300	HC3***-048	115
BHE112/080B	-	-	080B		2	110	-	-	M10	80	-	110	-						
BHE112/080E	-	-	080E		4	100	-	-	M8	80	-	110	-						
BHE112/082A	-	-	082A		2	106,4	-	-	M10	82,55	-	110	-						

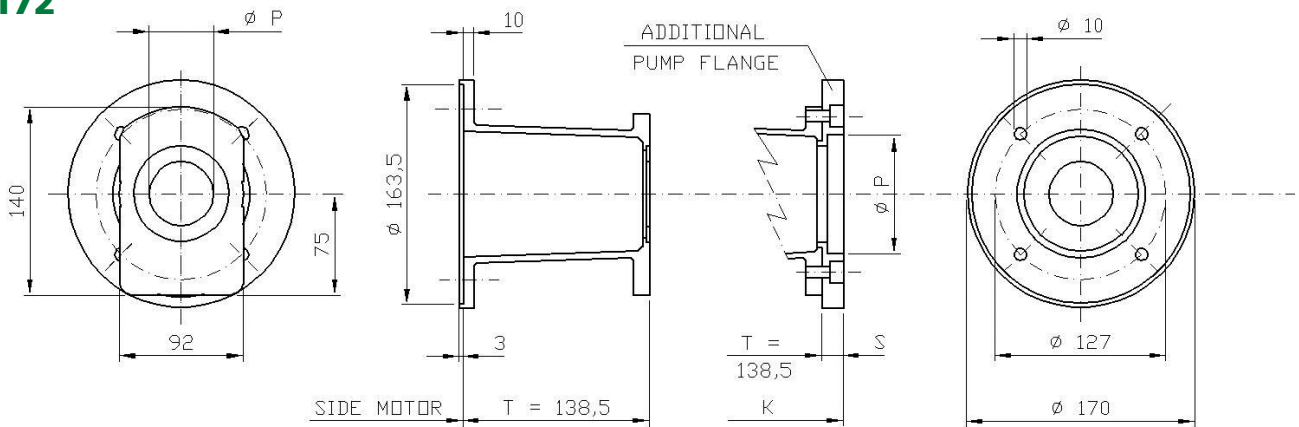
BHE2 - Bell-housings for petrol engine

BHE 152



BELL-HOUSING			PUMP CODE	PUMP HOLE TYPE	PUMP FACE MACHINING									HEIGHT				ELASTIC COUPLING			MAX TORQUE Nm
CODE	ADDITIONAL PUMP FLANGE	ADAPTOR			N. HOLES	L	M	N	O	P	S	T	K	MOTOR HALF	SPIDER	PUMP HALF					
BHE152C/02	-	AR3/02	1PM	RECTANGULAR FOR GEAR PUMPS	4	52,4	72	26,2	M6	25,4	-	138,5	-	HC3***-048	ER300	HC301A	115				
BHE152C/03	-	AR3/03	1MM		4	56	73	24,5	M6	30	-	138,5	-			HC301B					
BHE152/16	-	-	1ZB		2	40	40	10,3	M8	32	-	138,5	-			HC301D					
BHE152C/04	-	AR3/04	02M-02C		4	71,5	96	32,5	M8	36,5	-	138,5	-	HC3***-048	ER300	HC302A-B					
BHE152/17	-	-	2ZF		4	72	100	34,5	M8	80	-	138,5	-			HC302D					
BHE152/17	FR10C/05	AR3/06	03M		4	98,5	128	43	M8	50,8	16	138,5	154,5			HC303A					
BHE152/17	FR10C/06	AR3/06	03C		4	98,5	128	42	M10	50,8	16	138,5	154,5								
BHE152/17	FR10C/07	AR3/06	03T		4	98,5	137	45	M10	50,8	16	138,5	154,5								
BHE152/080A	-	-	080A		OVAL AND SQUARE FOR SAE AND ISO STANDARD	2	100	-	-	M10	80	-	138,5	-	HC3***-048	ER300		HC3***-***	115		
BHE152/080B	-	-	080B			2	110	-	-	M10	80	-	138,5	-							
BHE152/080E	-	-	080E	4		100	-	-	M8	80	-	138,5	-								
BHE152/082A	-	-	082A	2		106,4	-	-	M10	82,55	-	138,5	-								
BHE152/080U	FR60/100B	-	100B	2		140	-	-	M12	100	29	138,5	167,5								
BHE152/080U	FR60/100G	-	110G	4		125	-	-	M10	100	29	138,5	167,5								
BHE152/080U	FR60/101B	-	101B	2		146	-	-	M12	101,6	29	138,5	167,5								
BHE152/080U	FR60/101D	-	101D	4		127	-	-	M12	101,6	29	138,5	167,5								

BHE 172



BELL-HOUSING			PUMP CODE	PUMP HOLE TYPE	PUMP FACE MACHINING									HEIGHT				ELASTIC COUPLING			MAX
CODE	ADDITIONAL PUMP FLANGE	PUMP SIDE ADAPTOR RING			N°	L	M	N	O	P	S	T	K	MOTOR	SPIDER	PUMP					
BHE172C/02	-	AR3/02	1PM	RECTANGULAR FOR GEAR PUMP	4	52,4	72	26,2	M6	25,4	-	138,5	-	HC3***-048	ER300	HC301A	115				
BHE172C/03	-	AR3/03	1MM		4	56	73	24,5	M6	30	-	138,5	-			HC301B					
BHE172/16	-	-	1ZB		2	40	40	10,3	M8	32	-	138,5	-			HC301D					
BHE172C/04	-	AR3/04	02M-02C		4	71,5	96	32,5	M8	36,5	-	138,5	-	HC3***-048	ER300	HC302A-B					
BHE172/17	-	-	2ZF		4	72	100	34,5	M8	80	-	138,5	-			HC302D					
BHE172/17	FR10C/05	AR3/06	03M		4	98,5	128	43	M8	50,8	16	138,5	154,5			HC303A					
BHE172/17	FR10C/06	AR3/06	03C		4	98,5	128	42	M10	50,8	16	138,5	154,5								
BHE172/17	FR10C/07	AR3/06	03T		4	98,5	137	45	M10	50,8	16	138,5	154,5								
BHE172/080A	-	-	080A		OVAL AND SQUARE FOR SAE AND ISO STANDARD	2	100	-	-	M10	80	-	138,5	-	HC3***-048	ER300		HC3***-***	115		
BHE172/080B	-	-	080B			2	110	-	-	M10	80	-	138,5	-							
BHE172/080E	-	-	080E	4		100	-	-	M8	80	-	138,5	-								
BHE172/082A	-	-	082A	2		106,4	-	-	M10	82,55	-	138,5	-								
BHE172/080U	FR60/100B	-	100B	2		140	-	-	M12	100	29	138,5	167,5								
BHE172/080U	FR60/100G	-	110G	4		125	-	-	M10	100	29	138,5	167,5								
BHE172/080U	FR60/101B	-	101B	2		146	-	-	M12	101,6	29	138,5	167,5								
BHE172/080U	FR60/101D	-	101D	4		127	-	-	M12	101,6	29	138,5	167,5								

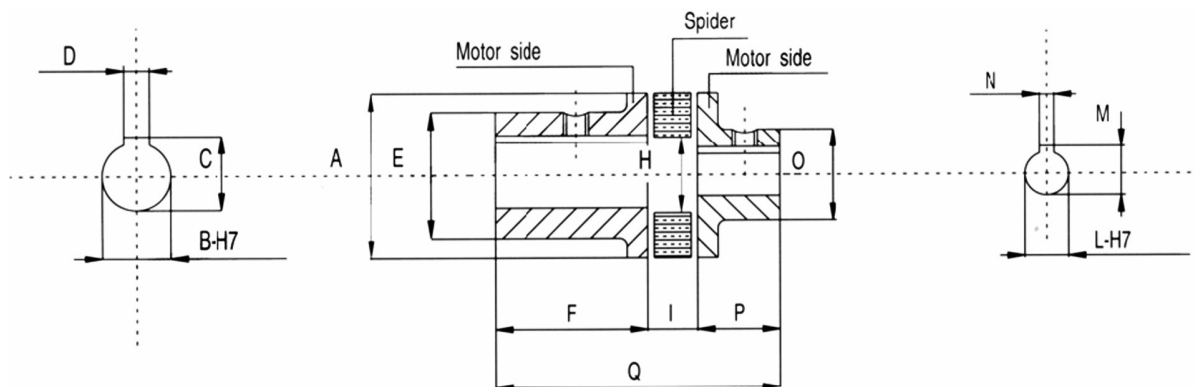
HC - Elastic couplings

ELASTIC COUPLINGS FOR PETROL ENGINES AND OIL-HYDRAULIC PUMPS

They are composed of two hubs, a motor and a pump side, with an interposed "wheel" made of heat and oil-proof elastic material. They allow reliable, noise less, motion transmission. They also allow to compensate small radial, axial and angular misalignments. HC series is made in aluminium.

TECHNICAL DATA				
TYPE GN	MAX COUPLE Nm	MISALIGNMENT MAX		
		RADIAL mm	AXIAL mm	ANGULAR
100	11,5	0,4	1	1°30'
300	11,5	0,8	1,3	1°30'
500	310	1	1,8	1°30'

Working temperature -20 + 80 ° C



ELASTIC COUPLING																
TYPE GN	MOTOR HALF						SPIDER				PUMP HALF					
	TYPE	A	L min	L max	E	F max	TYPE	A	H	I	TYPE	A	L min	L max	O	P max
100	HC1***-050	42	16	20	36	50	ER100	42	22	15	HC1***-A020	42	8	16	28	20
											HC1***-B030	42	8	16	28	30
300	HC3***-048	65	18	24	46	48	ER300	65	30	20	HC3***-A022	65	12	20	36	22
											HC3***-B035	65	12	28	46	35
											HC3***-C045	65	22	28	46	45
500	HC5***-080	95	22	40	70	80	ER500	95	46	26	HC5***-A025	95	12	22	50	25
											HC5***-B035	95	12	28	56	35
											HC5***-C048	95	22	40	70	48