

# SD 25

SECTIONAL  
DIRECTIONAL CONTROL VALVES



## Features

Simple, compact and heavy duty designed sectional valve from 1 to 12 sections for open and closed center hydraulic systems.

- Fitted with a main pressure relief valve and a load check valve on every working section
- Available with parallel or series circuit.
- Optional power beyond port.
- A wide variety of service ports and circuit valves.
- Available manual, pneumatic, hydraulic, electro-hydraulic, and remote with flexible cables spool control kits.
- Diameter 25 mm (0.98 in) interchangeable spools.

## Working conditions

This catalog shows technical specifications and diagrams measured with mineral oil of 46 mm<sup>2</sup>/s - 46 cSt viscosity at 40°C - 104 °F temperature.

Nominal flow rating		240 l/min	63 US gpm
Operating pressure (maximum)	<i>parallel circuit</i>	315 bar	4600 psi
	<i>series circuit</i>	210 bar	3050 psi
Back pressure (maximum)	<i>on outlet port T</i>	25 bar	360 psi
Internal leakage A(B)→T	<i>Δp=100 bar - 1450 psi fluid and valve at 40 °C - 104 °F</i>	4 cm <sup>3</sup> /min	0.24 in <sup>3</sup> /min
Fluid		Mineral base oil	
Fluid temperature range	<i>with NBR (BUNA-N) seals</i>	from -20° to 80°C	<i>from -4 °to 176 °F</i>
	<i>with FPM (VITON) seals</i>	from -20° to 100°C	<i>from -4 °to 212 °F</i>
Viscosity	<i>operating range</i>	from 15 to 75 mm <sup>2</sup> /s	<i>from 15 to 75 cSt</i>
	<i>min.</i>	12 mm <sup>2</sup> /s	<i>12 cSt</i>
	<i>max.</i>	400 mm <sup>2</sup> /s	<i>400 cSt</i>
Max level of contamination		19/16 - ISO 4406	NAS 1638 - class10
Ambient temperature range		from -40° to 60°C	<i>from -40 °to 140 °F</i>

NOTE - For different conditions please contact Sales Dept.

### Additional information

This catalog shows the product in the most standard configurations.

Please contact Sales Dpt. for more detailed information or special request.

### WARNING!

All specifications of this catalog refer to the standard product at this date.

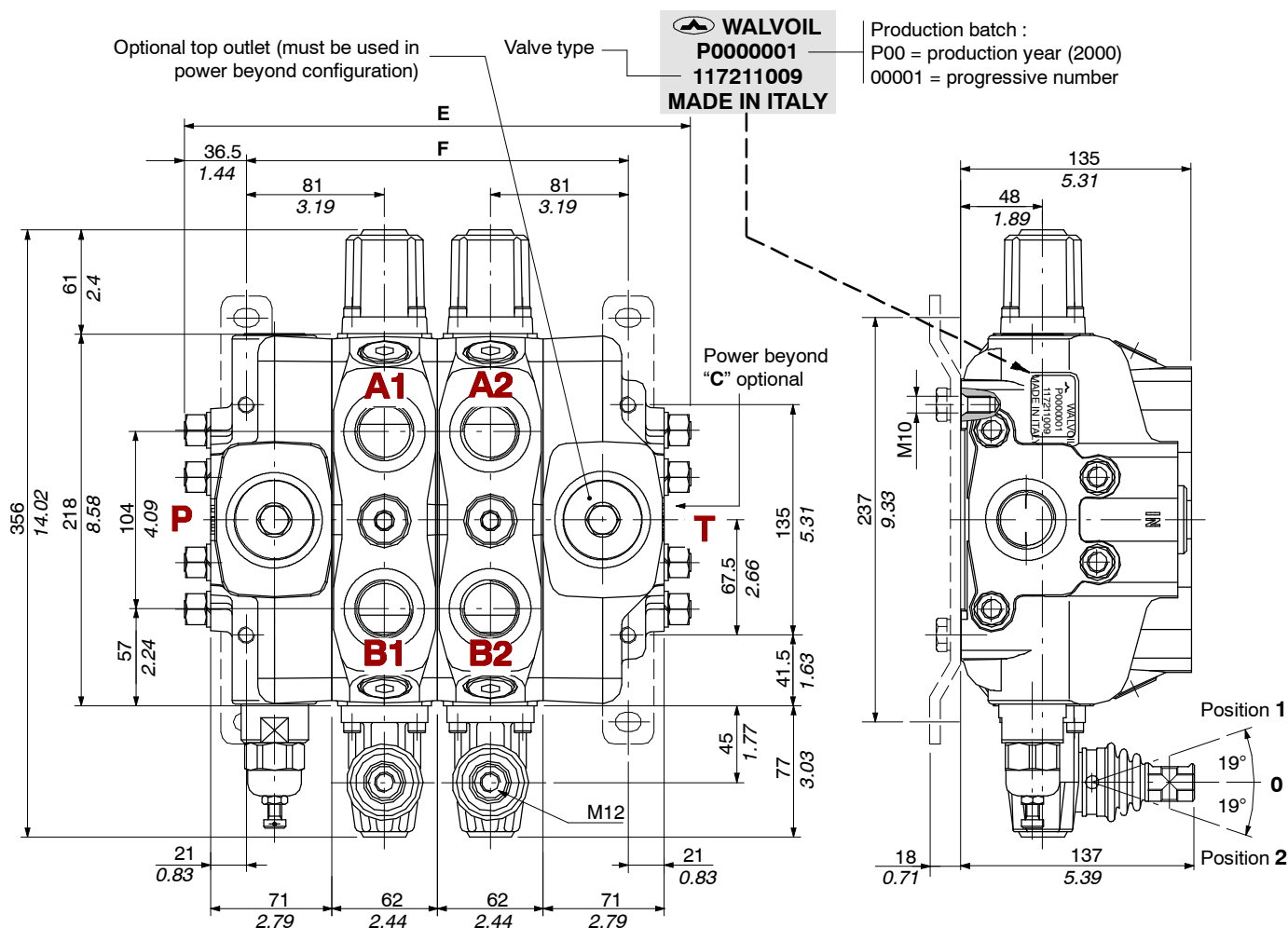
Walvoil, oriented to a continuous improvement, reserves the right to discontinue, modify or revise the specifications, without notice.

WALVOIL IS NOT RESPONSIBLE FOR ANY DAMAGE CAUSED BY AN  
INCORRECT USE OF THE PRODUCT.

4<sup>th</sup> edition September 2003:

**This edition supersedes all prior documents.**

## Dimensional data (parallel circuit)



TYPE	E		F		Weight	
	mm	in	mm	in	kg	lb
SD25/1	235	9.25	162	6.38	37.6	83
SD25/2	297	11.69	224	8.82	48.6	107
SD25/3	359	14.13	286	11.26	59.6	131.4
SD25/4	421	16.57	348	13.7	70.6	155.6
SD25/5	483	19.02	410	16.14	81.6	180
SD25/6	545	21.46	472	18.58	92.6	204

TYPE	E		F		Weight	
	mm	in	mm	in	kg	lb
SD25/7	607	23.9	534	21.02	103.6	228.2
SD25/8	669	26.34	596	23.46	114.6	252.4
SD25/9	731	28.78	658	25.9	125.6	276.6
SD25/10	793	31.22	720	28.34	136.6	300.8
SD25/11	855	33.66	782	30.78	147.6	325
SD25/12	917	36.1	844	33.22	158.6	349.2

### Standard threads

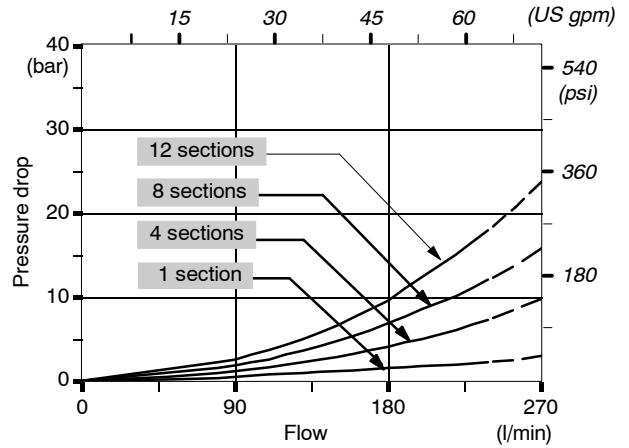
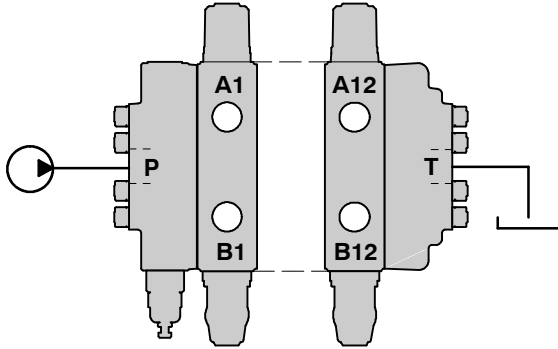
PORTS	BSP (ISO 228/1)	UN-UNF (ISO 11926-1)
Inlet P	G 1	1 5/8-12 UN-2B (SAE 20)
A and B ports	G 1	1 5/16-12 UN-2B (SAE 16)
Outlet T and power-beyond C	G 1 1/4	1 5/8-12 UN-2B (SAE 20)
PILOT PORTS		
Hydraulic	G 1/4	9/16-18 UNF-2B (SAE 6)
Pneumatic	NPTF 1/8-27	NPTF 1/8-27

# SD25

## Performance data (pressure drop vs. flow)

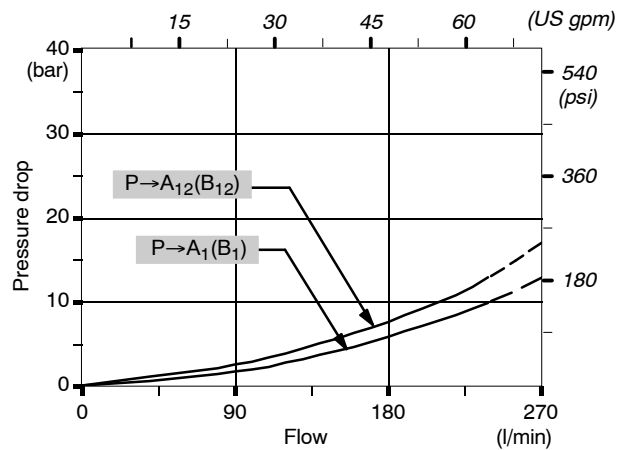
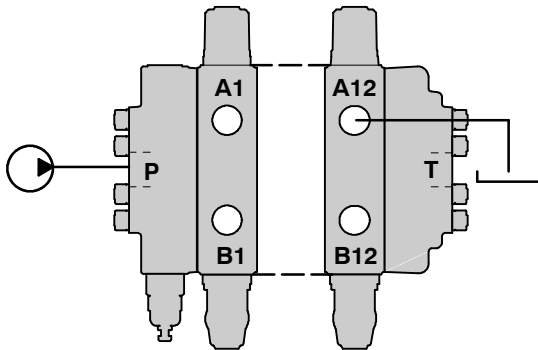
### Open center

From side inlet to side outlet.



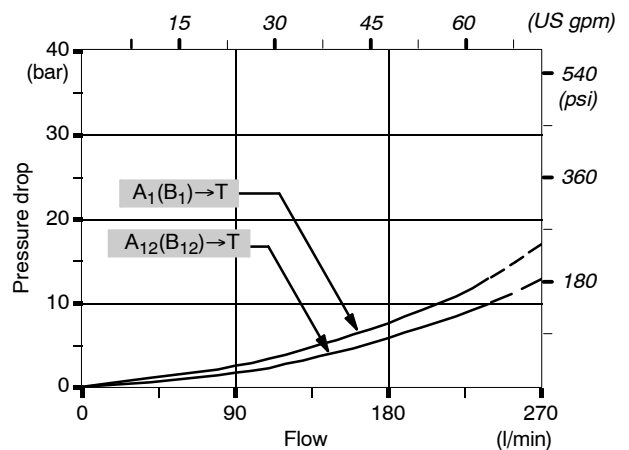
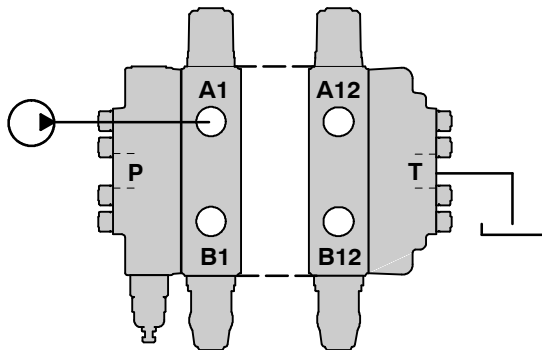
### Inlet to work port

From side inlet to A port (spool in position 1) or B port (spool in position 2).

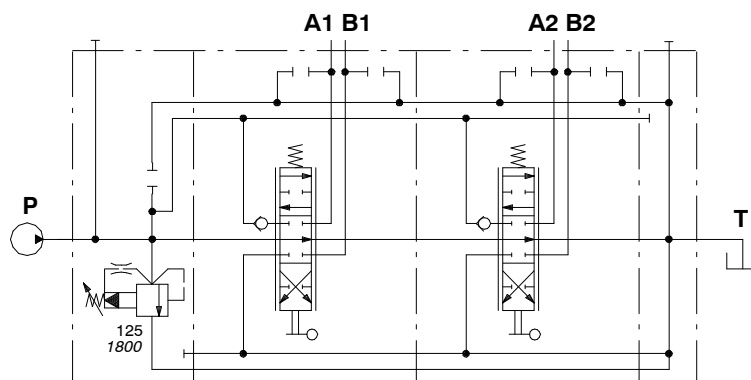
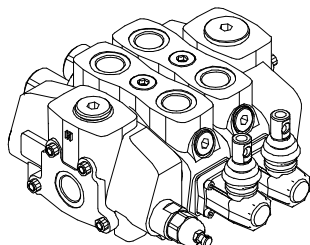


### Work port to outlet

From A port (spool in position 2) or B port (spool in position 1) to side outlet.

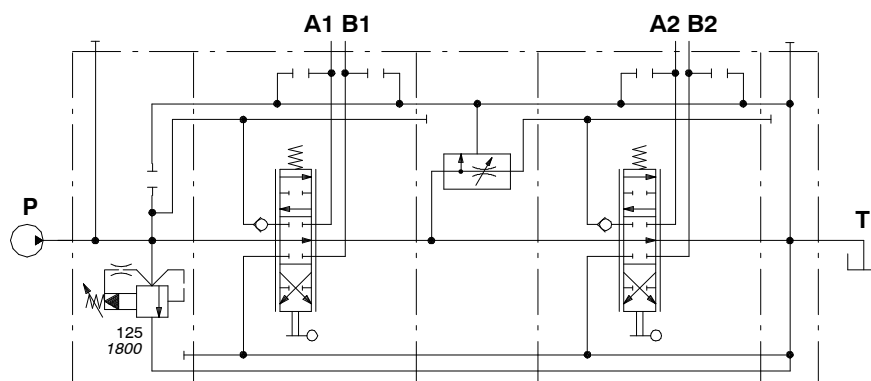
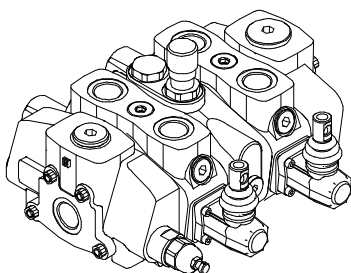


## 2 parallel working sections



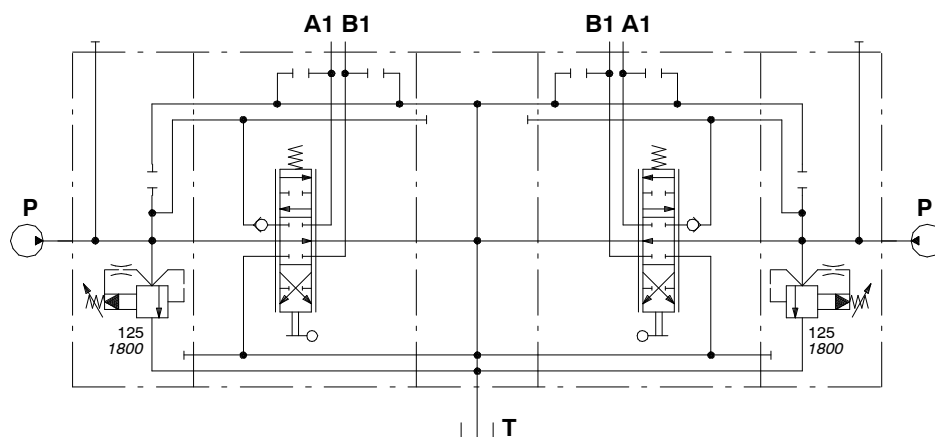
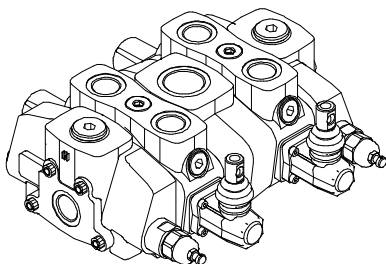
Ex.: SD25/2/AC(XG-125)/18L/18L/RC

## Intermediate pressure compensated flow divider section



Ex.: SD25/2/AC(XG-125)/18L/DFG/18L/RC

## 2 inlet cover and mid return manifold section

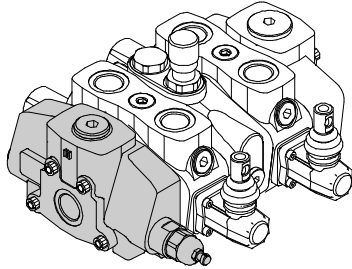


Ex.: SD25/2/AC(XG-125)/18L/CS1/18L/BC(XG-125)

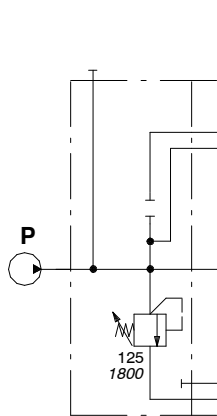
# SD25

## Hydraulic circuit

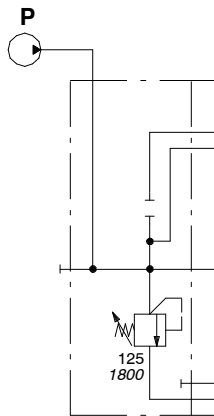
### Inlet cover



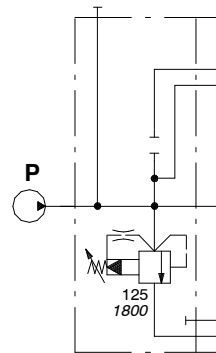
TYPE	CODE	DESCRIPTION
<b>AC(YG3)</b>	617205007	Side inlet with direct pressure relief valve
<b>AD(YG3)</b>	617205005	Top inlet with direct pressure relief valve
<b>AC(XG)</b>	617205009	Side inlet with pilot operated pressure relief valve
<b>AC(SV)</b>	617205006	Side inlet with relief valve blanking plug



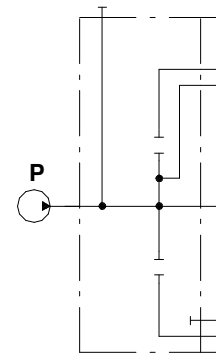
AC(YG3-125)



AD(YG3-125)

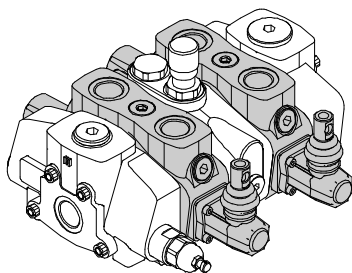


AC(XG-125)

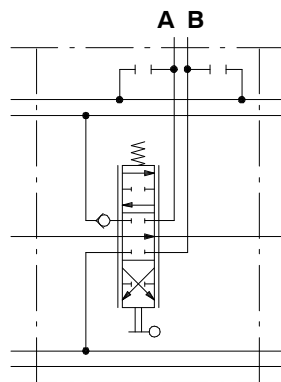


AC(SV)

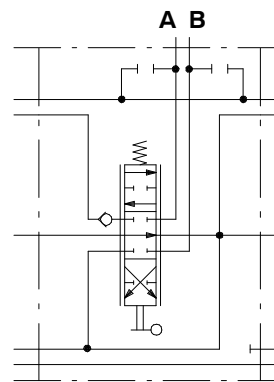
### Working sections



TYPE	CODE	DESCRIPTION
<b>P-18L</b>	617105001	Parallel
<b>S-18L</b>	617115001	Series

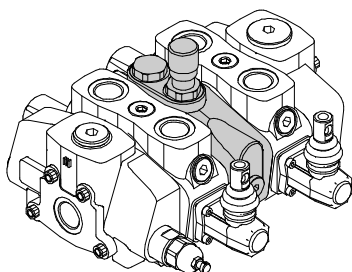


P-18L

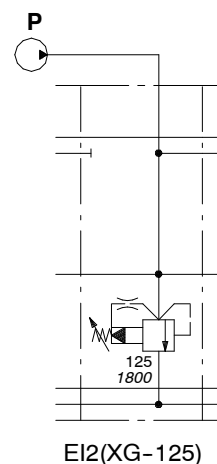
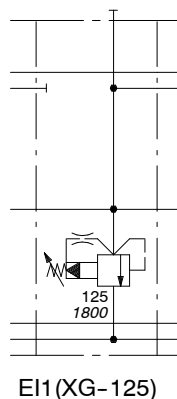
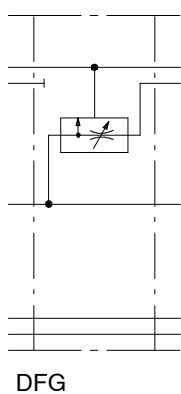
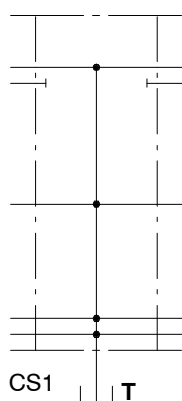


S-18L

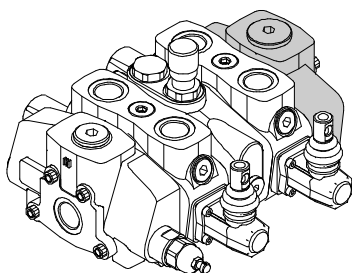
Intermediate sections



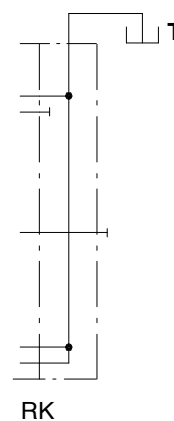
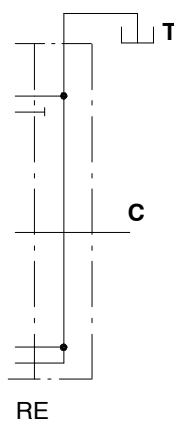
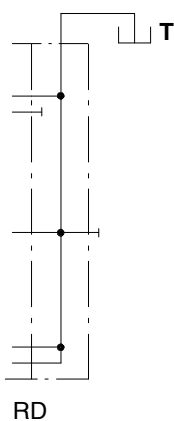
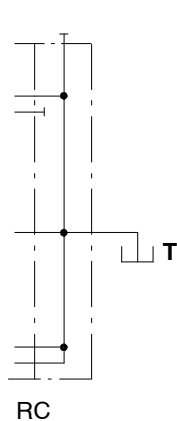
TYPE	CODE	DESCRIPTION
<b>CS1</b>	617405010	Mid return manifold section
<b>DFG</b>	617411020	Pressure compensated flow divider section
<b>EI1(XG)</b>	617425010	Secondary pilot operated pressure relief valve
<b>EI2(XG)</b>	617425020	Mid inlet with secondary pilot operated pressure relief valve



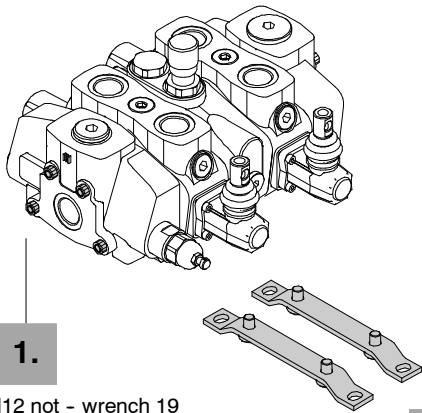
Outlet cover



TYPE	CODE	DESCRIPTION
<b>RC</b>	617305002	Side outlet
<b>RD</b>	617305001	Top outlet
<b>RE</b>	617305007	Top outlet with power beyond
<b>RK</b>	617305112	Top outlet with closed center



## Assembling parts



M12 not - wrench 19

PART	CODE	DESCRIPTION
1.	5TIR112234	Tie rod kit for 1 sections valve
	5TIR112296	Tie rod kit for 2 sections valve
	5TIR112358	Tie rod kit for 3 sections valve
	5TIR112420	Tie rod kit for 4 sections valve
	5TIR112482	Tie rod kit for 5 sections valve
	5TIR112544	Tie rod kit for 6 sections valve
	5TIR112606	Tie rod kit for 7 sections valve
	5TIR112668	Tie rod kit for 8 sections valve
	5TIR112730	Tie rod kit for 9 sections valve
	5TIR112792	Tie rod kit for 10 sections valve
	5TIR112854	Tie rod kit for 11 sections valve
	5TIR112916	Tie rod kit for 12 sections valve

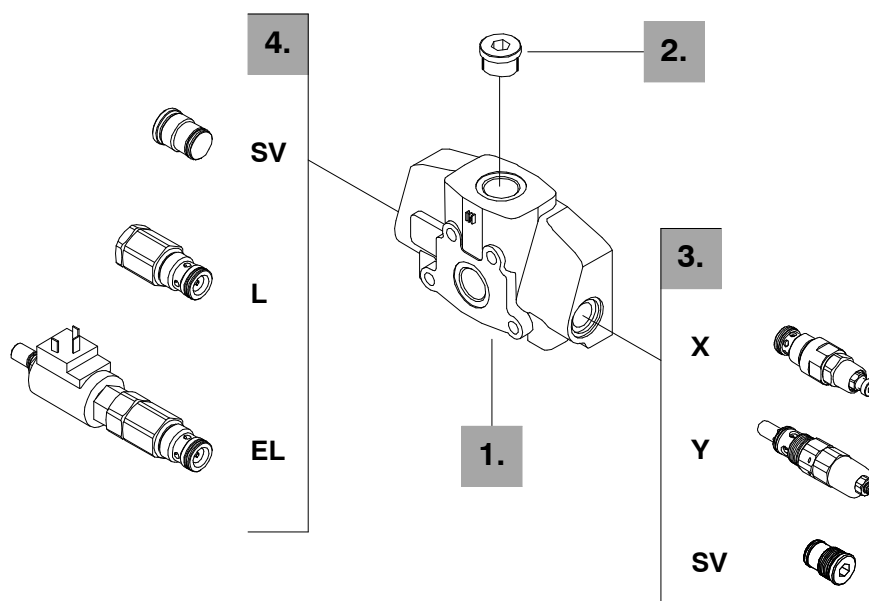
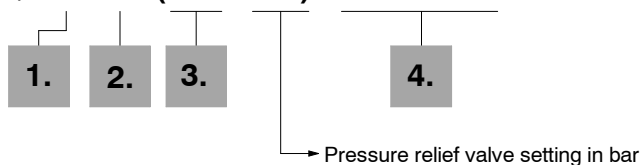
Tie rod tightening torque 50 Nm (36.88 lbft)

2.	5STA130270	Brakets kit
----	------------	-------------



## Description example:

FE SD25 / A C (XG - 125) EL-12VDC - SAE \*

**1. Inlet cover body \***

CODE	DESCRIPTION
5FIA125801	AC-AD type body

**2. Inlet port selection \***

CODE	DESCRIPTION
3XTAP848220	SAE20 plug (n.1 plug required)

**3. Inlet relief options**

TYPE	CODE	DESCRIPTION
<u>VMP25/1 pilot operated pressure relief valve type X (standard)</u>		
(XG-125)	X008211120	Range 25 to 315 bar / 360 to 4600 psi standard setting 125 bar / 1800 psi
<u>VMD25/1 direct pressure relief valve type Y</u>		
(YG3-125)	XCAR125213	Range 125 to 220 bar / 1800 to 2900 psi standard setting 125 bar / 1800 psi

Standard setting is referred to 10 l/min - 2.6 US gpm flow.

SV	3XTAP536540	Relief valve blanking plug
----	-------------	----------------------------

**4. Inlet valves options**

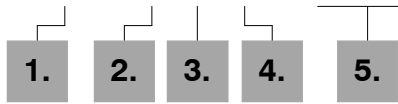
TYPE	CODE	DESCRIPTION
L	5CAR425700	Hydraulic pilot unloader valve (FC1.5)
EL	YCAR425305	12 VDC electromagnetic controlled unloader valve
	YCAR425310	24 VDC electromagnetic controlled unloader valve
SV	3XTAP536540	Relief valve blanking plug

# SD25

## Working section options

### Description example:

EL SD25 / P - 1 8 L . P 1 (G3 - 100) - SAE \*



- 1 mounted on A port.
- 2 mounted on B port.
- 3 mounted on A and B ports.

→ Port relief valve setting in bar

### 1. Working section kits \*

TYPE	CODE	DESCRIPTION
P	5EL1257000	Parallel
S	5EL2258000	Series

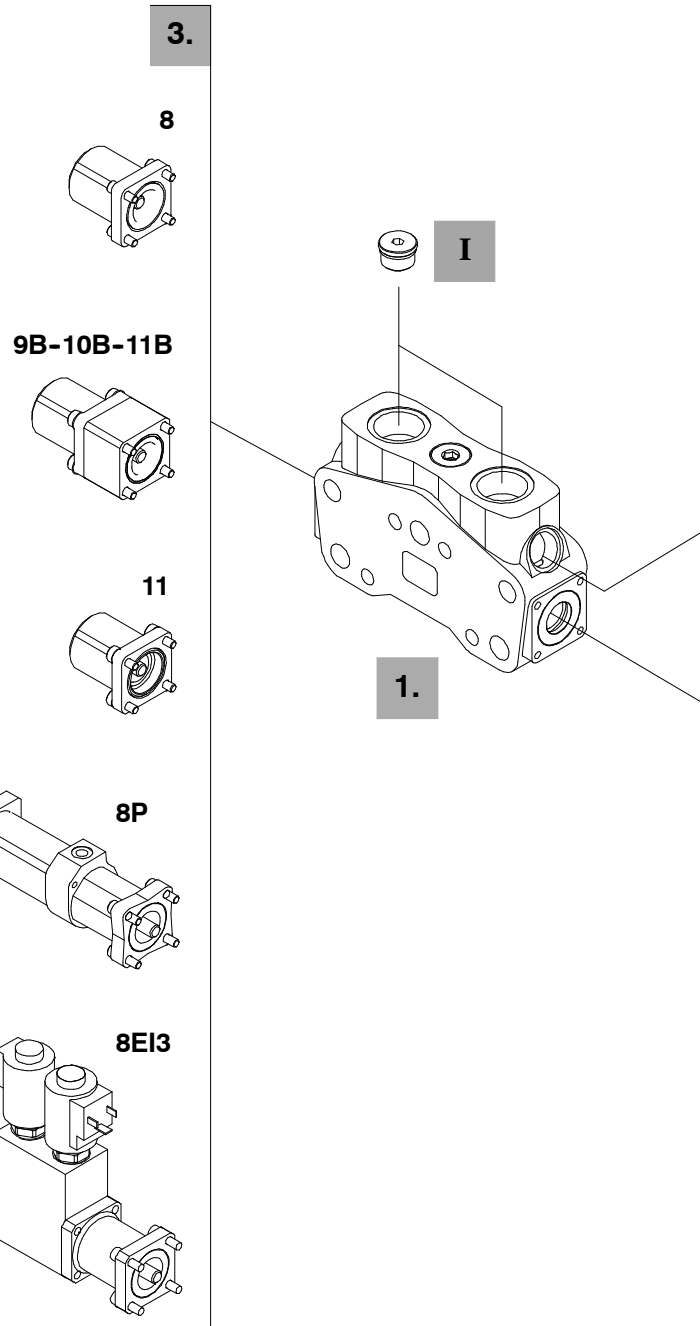
Include boby, seals, rings and load check valve.

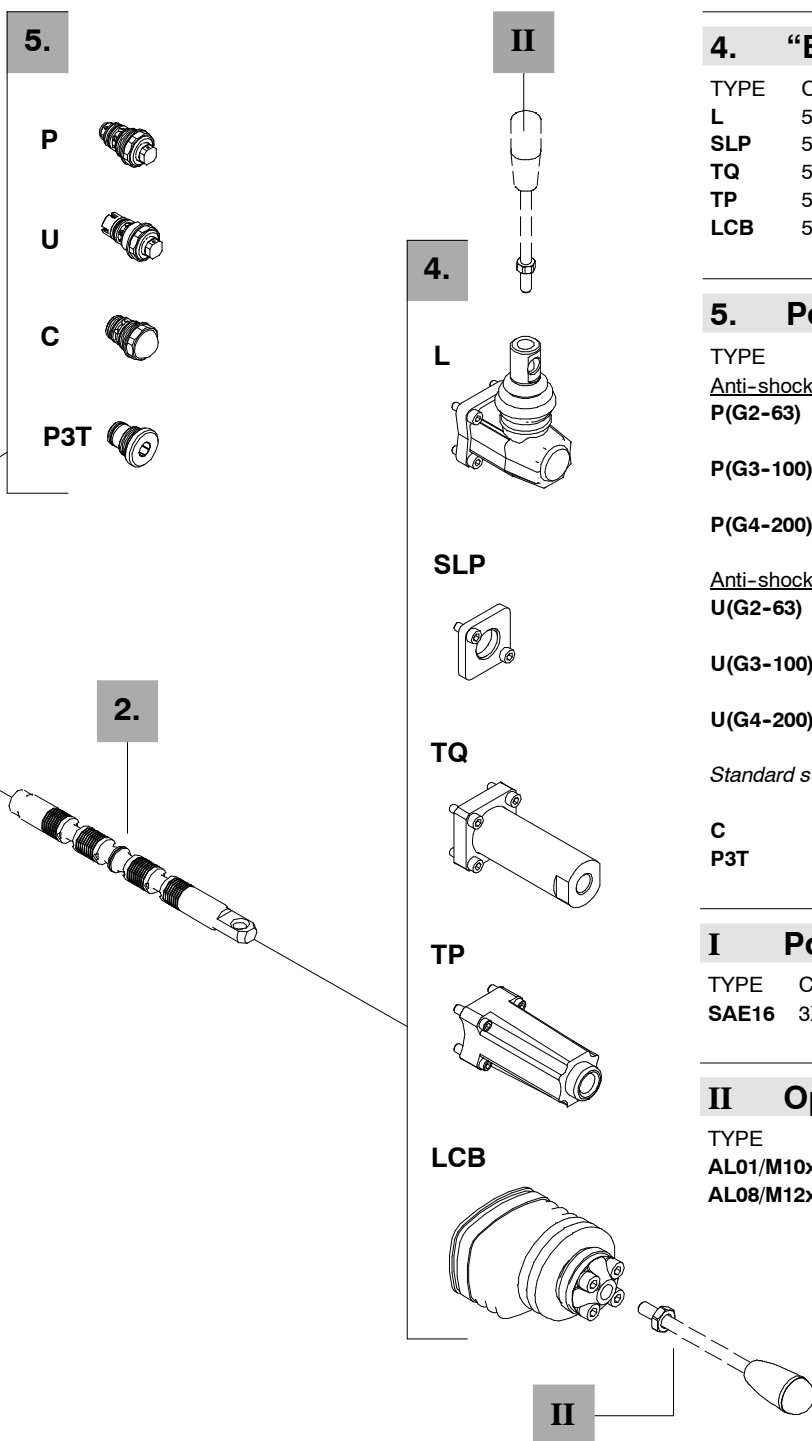
### 2. Spool options

TYPE	CODE	CIRCUIT DESCRIPTION
1	3CU2710100	Double acting, 3 positions, with A and B closed in neutral position
1A	3CU2721100	Double acting, 3 positions, with A open to tank in neutral position
2	3CU2725100	Double acting, 3 positions, with A and B open to tank in neutral position
3	3CU2731100	Single acting on A, 3 positions, B plugged; requires SAE 16 plug (see part I)
4	3CU2735100	Single acting on B, 3 positions, A plugged; requires SAE 16 plug (see part I)

### 3. "A" side spool positioners

TYPE	CODE	DESCRIPTION
8	5V08120000	With spring return in neutral position
9B	5V09120000	With detent in position 1 and spring return in neutral position
10B	5V09120000	With detent in position 2 and spring return in neutral position
11	5V11120000	With detent in position 1, neutral and 2
11B	5V11220000	With detent in position 1 and 2, spring return in neutral position
8P	5V08120701	Pneumatic kit
8EI3	5V08120350	12 VDC ON/OFF electro-hydraulic kit
	5V08120351	24 VDC ON/OFF electro-hydraulic kit





#### 4. "B" side options

TYPE	CODE	DESCRIPTION
L	5LEV120000	Standard lever
SLP	5COP120000	Without lever, with dust proof plate
TQ	5TEL120100	CD cable connection
TP	5TEL120005	CG cable connection
LCB	5CLO225000	Mechanical joystick

#### 5. Port relief options

TYPE	CODE	DESCRIPTION
<u>Anti-shock valve</u>		
<b>P(G2-63)</b>	XCAR216115	Range 63 to 125 bar / from 900 to 1800 psi standard setting 63 bar / 900 psi
<b>P(G3-100)</b>	XCAR216116	Range 100 to 2500 bar / from 1450 to 3600 psi standard setting 100 bar / 1450 psi
<b>P(G4-200)</b>	XCAR216117	Range 200 to 315 bar / from 2900 to 4600 psi standard setting 200 bar / 290 psi
<u>Anti-shock and anti-cavitation valve</u>		
<b>U(G2-63)</b>	XCAR316112	Range 63 to 125 bar / from 900 to 1800 psi standard setting 63 bar / 900 psi
<b>U(G3-100)</b>	XCAR316113	Range 100 to 2500 bar / from 1450 to 3600 psi standard setting 100 bar / 1450 psi
<b>U(G4-200)</b>	XCAR316114	Range 200 to 315 bar / from 2900 to 4600 psi standard setting 200 bar / 290 psi
Standard setting is referred to 10 l/min - 2.6 US gpm flow.		
<b>C</b>	3XCAR416100	Anti-cavitation
<b>P3T</b>	3XTAP528360	A and B ports valve blanking plugs

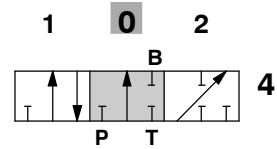
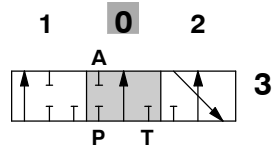
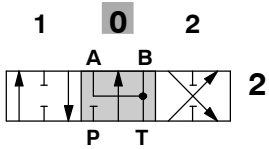
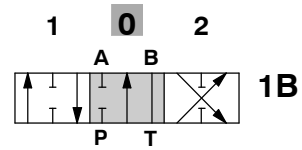
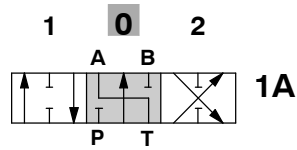
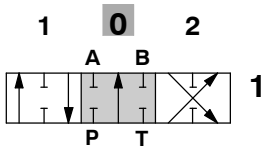
#### I Port plug \*

TYPE	CODE	DESCRIPTION
<b>SAE16</b>	3XTAP838200	Plug for single acting spool

#### II Optional handlevers

TYPE	CODE	DESCRIPTION
<b>AL01/M10x200</b>	170013020	For L lever box L= 200mm/7.87in
<b>AL08/M12x250</b>	170013125	For LCB joystick L= 250mm/9.84in

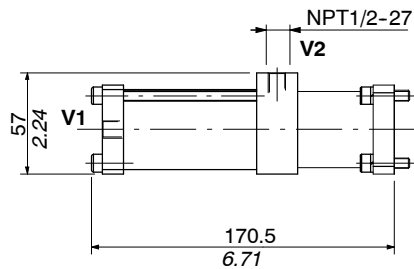
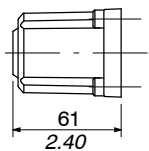
## Spools options



"B" port plugged

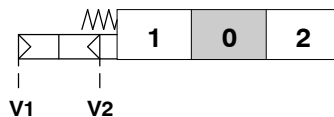
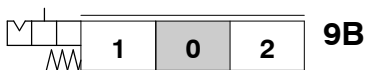
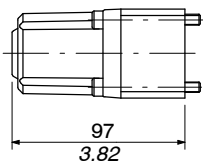
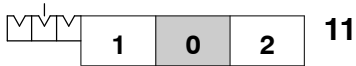
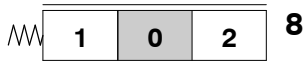
"A" port plugged

## "A" side spool positioners



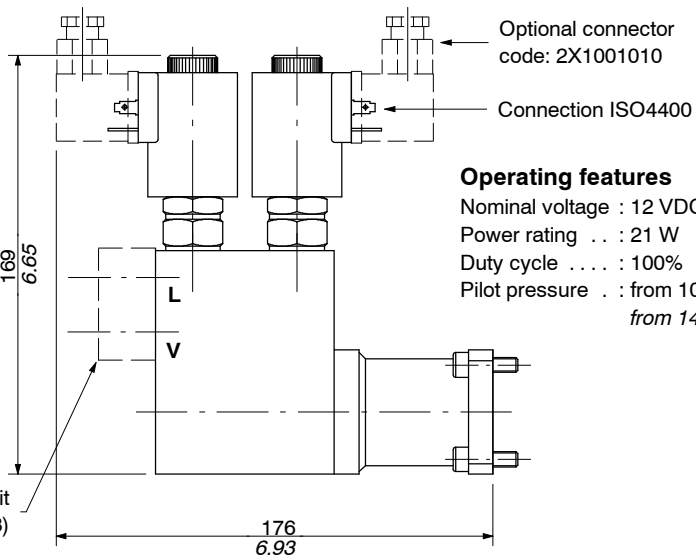
### Operating features

Pilot pressure : min 6 max 10 bar  
min 87 max 145 psi



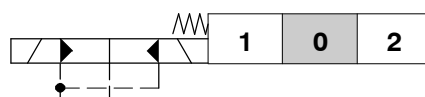
### 8P

ON/OFF pneumatic kit



### Operating features

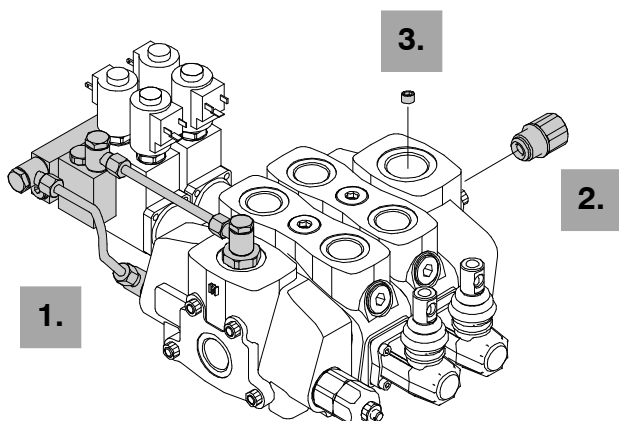
Nominal voltage : 12 VDC / 24 VDC  
Power rating . . . : 21 W  
Duty cycle . . . . : 100%  
Pilot pressure . . : from 10 to 50 bar  
from 145 to 725 psi



### 8E13

ON/OFF electro-hydraulic kit

**Electro-hydraulic feeder kit**



PART	TYPE	CODE	DESCRIPTION
<b>1.</b>	<b>KE1R3</b>	5KE1R31770	kit for 1 section
	<b>KE2R3</b>	5KE2R31770	kit for 2 sections
	<b>KE3R3</b>	5KE3R31770	kit for 3 sections
	<b>KE4R3</b>	5KE4R31770	kit for 4 sections
	<b>KE5R3</b>	5KE5R31770	kit for 5 sections
	<b>KE6R3</b>	5KE6R31770	kit for 6 sections
<b>2.</b>	<b>VRE</b>	XGIU655851	SAE back-pressure valve (power beyond configuration)
<b>3.</b>	<b>RE</b>	4TAP426612	G 3/4 plug

NOTE - Codes are referred to **UN-UNF** thread.

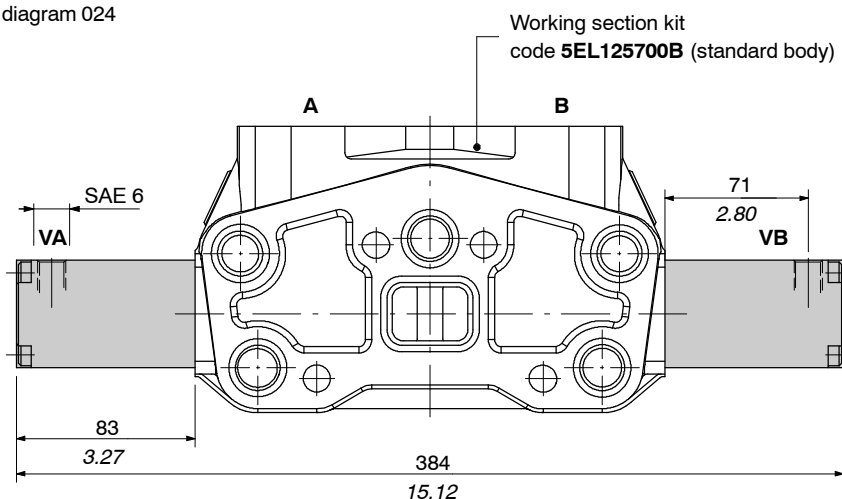
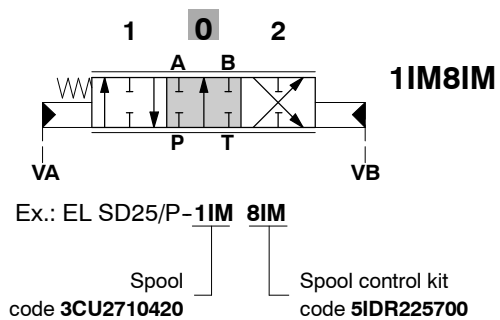
**Special configurations**

**Hydraulic spool control**

**Operating features**

Adjustment range : from 5.8 to 19 bar / 84 to 276 psi - diagram 024

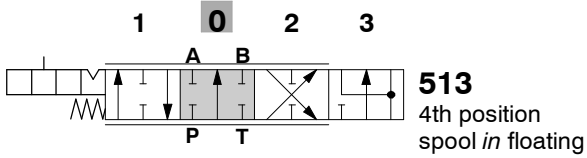
Max.pilot pressure : 100 bar / 1450 psi



# SD25

## Special configuration

### 4th position floating circuit

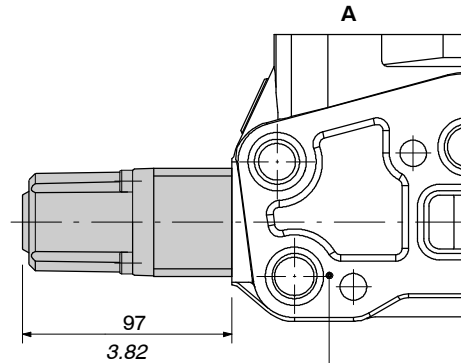


**513**  
4th position  
spool *in floating*

Ex.: EL SD25/P-5 13...

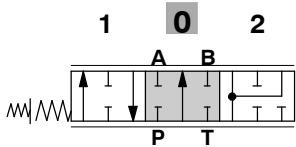
Spool  
code **3CU2741100**

Spool control kit  
code **5V13025000**



Working section kit  
code **5EL1257200** (special body)

### Regenerative circuit

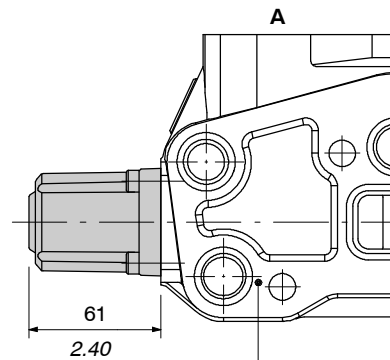


**8P8CR**  
Spool *in regenerative*

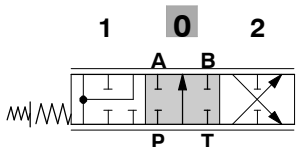
Ex.: EL SD25/P-8P 8CR...

Spool  
code **3CU2761100**

Spool control kit  
code **5V08120020**



Working section kit  
code **5EL1257400** (special body)

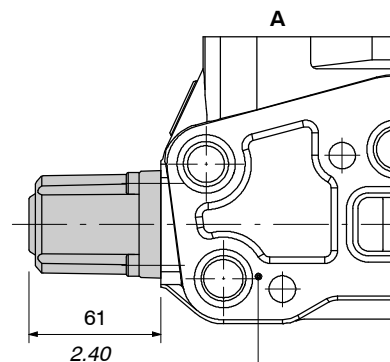


**8F8CR**  
Spool *out regenerative*

Ex.: EL SD25/P-8F 8CR...

Spool  
code **3CU2761200**

Spool control kit  
code **5V08120020**

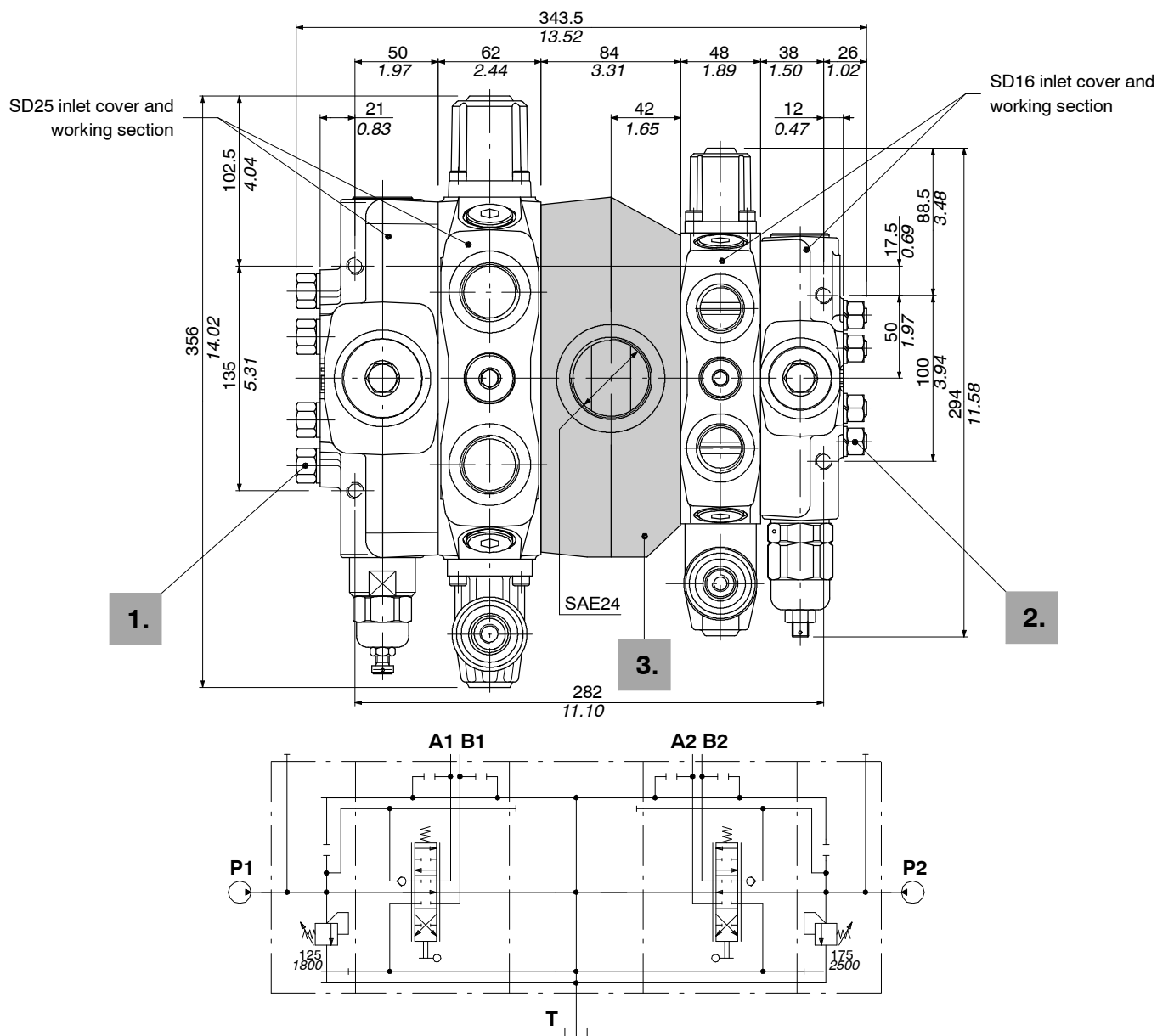


Working section kit  
code **5EL1257000** (standard body)

## CS3

Mid return manifold.

To assemble different sizes of valve. Tie rods are special. Available combination SD25 / SD16.



Description example: SD25/1/AC(XG-125)/18L/CS3/18L/BC(YG3-175)/SD16/1

### 1. Tie rod kits for SD25

CODE	DESCRIPTION
5TIR4251	Kit for 1 section
5TIR4252	Kit for 2 sections
5TIR4253	Kit for 3 sections
5TIR4254	Kit for 4 sections

### 2. Tie rod kits for SD16

CODE	DESCRIPTION
5TIR4161	Kit for 1 section
5TIR4162	Kit for 2 sections
5TIR4163	Kit for 3 sections
5TIR4164	Kit for 4 sections

### 3. Intermediate sections \*

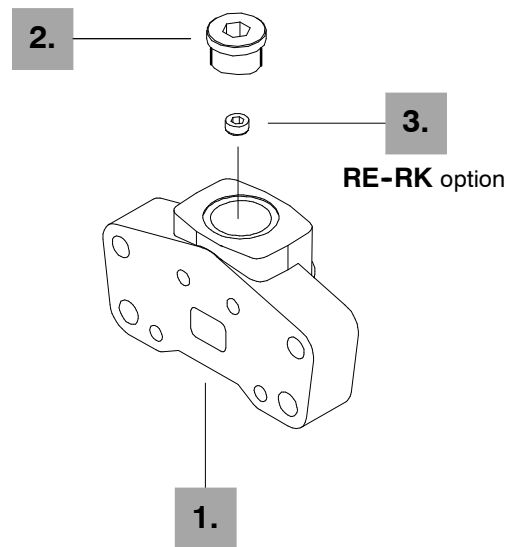
CODE	DESCRIPTION
------	-------------

# SD25

## Outlet cover options

Description example:

FS SD25 / RC - SAE \*



### Outlet section parts

PART	CODE	QTY	DESCRIPTION
<b>1.</b>	3FIA225801	1	Outlet section body *
<b>2.</b>	3XTAP848220	1	SAE 20 plug *

### Circuit option

PART	CODE	QTY	DESCRIPTION
<b>3.</b>	4TAP426612	1	G 3/4 plug for power beyond (RE) and closed center (RK) configuration

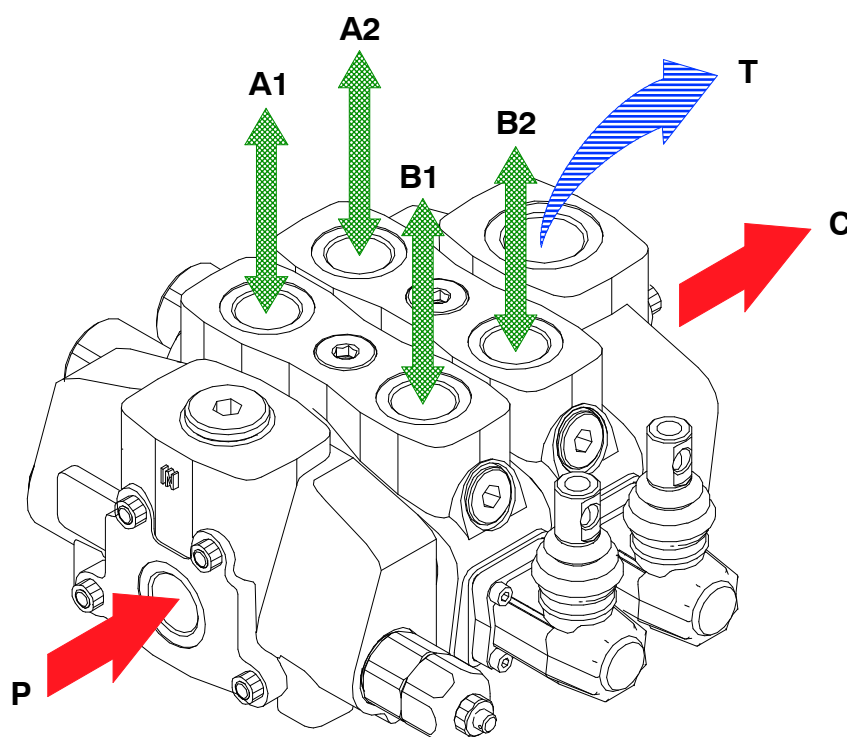


## Installation and maintenance

The SD25 valve is assembled and tested as per the technical specification of this catalog.

Before the final installation on your equipment, follow the below recommendations:

- the valve can be assembled in any position, in order to prevent working sections deformation and spools sticking mount the product on a flat surface;
- in order to prevent the possibility of water entering the lever box and spool control kit, do not use high pressure wash down directly on the valve;
- prior to painting, ensure plastic port plugs are tightly in place.



**Power beyond configuration**

### Fitting tightening torque - Nm / lbft

THREAD TYPE	P and C ports	A and B ports	T port
BSP (ISO 228/1)	G 1	G 1	G 1-1/4
With O-Ring seal	100 / 73.7	100 / 73.7	190 / 140.2
With copper washer	90 / 66.3	90 / 66.3	150 / 110.6
With steel and rubber washer	100 / 73.7	100 / 73.7	190 / 140.2
UN-UNF (ISO 11926-1)	1 5/8-12 UN-2B (SAE 20)	1 5/16-12 UN-2B (SAE 16)	1 5/8-12 UN-2B (SAE 20)
With O-Ring seal	200 / 147.5	150 / 110.6	200 / 147.5

NOTE - These torque are recommended. Assembly tightening torque depends on many factors, including lubrication, coating and

## SD25

---

### Notes

The SD25 valve can be supplied with one coat of opaque black paint (**CVN** configuration).

Example of specification: SD25/2/AC(XG-125)/18L/18L/RC-<**CVN**>

NOTE - *For different color consult Sales Dept.*

---

