

FLOWFIT®

DOUBLE ACTING MONOBLOCK CONTROL VALVE

- Flowfit double acting valve c/w 3 position spring return to centre
- Lever operated ideal for operating double acting hydraulic cylinders
- High tensile cast iron construction
- Built in adjustable main relief valve
- Differential poppet style relief valve
- Hard chrome plated spool

RECOMMENDED HYDRAULIC SYSTEM

- Maximum return line pressure 1100 PSI / 76 BAR
- Maximum operating temperature 180°F / 82°C
- Recommended system filtration: ISO440619/17/14

STANDARD FEATURES

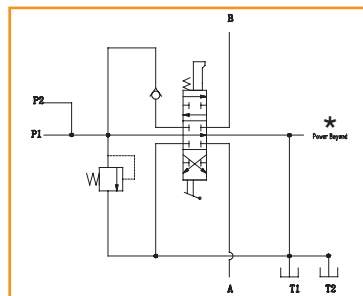
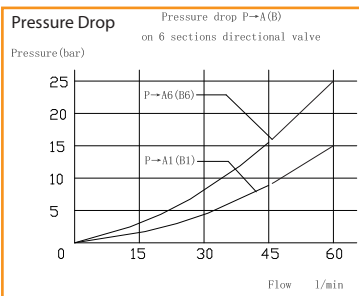
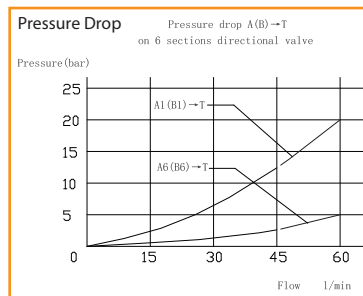
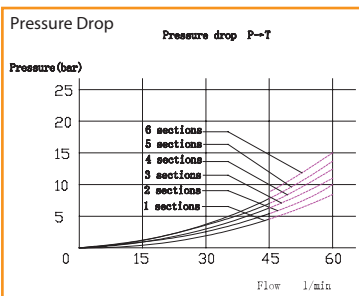
- Maximum 12GPM / 54L/MIN
- Parallel circuit
- Double acting spool lever operated c/w 3 position spring return to centre
- Maximum operating pressure 3500 PSI
- Relief valve set at 2500PSI, adjustable from 500 to 3000 PSI
- Power beyond and closed centre availability upon request not fitted as standard
- Float spool and motor spool available upon request
- Paint finish: gloss black 90 RAL 9005



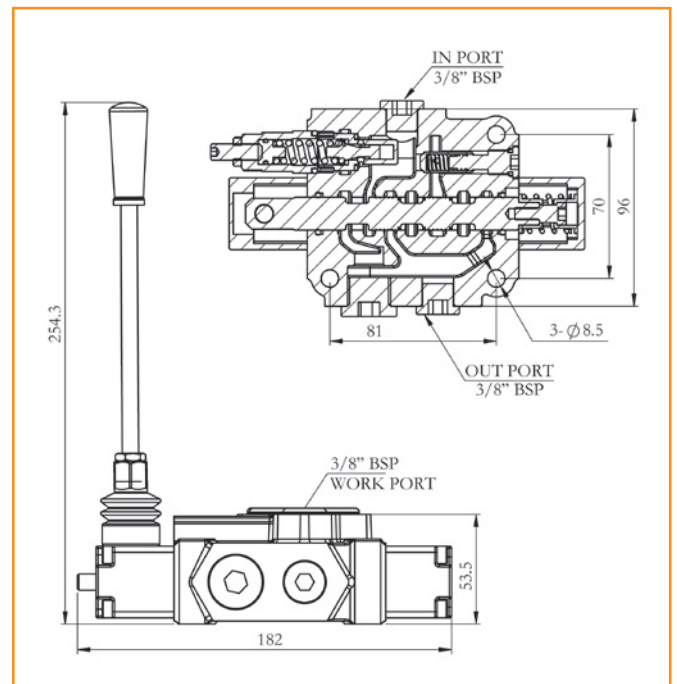
Compact



INSTALLATION DIMENSIONS



* NOT FITTED AS STANDARD



PART NUMBER	SPOOL OPTIONS	INLET/OUTLET PORTS	WORKING PORTS	MAX. FLOW	MAX PRESSURE	WEIGHT (KG)	LIST PRICE
ZZ005460		3/8" BSP	3/8" BSP	12 GPM 54 L/MIN	3500 PSI 240 BAR	2.9	