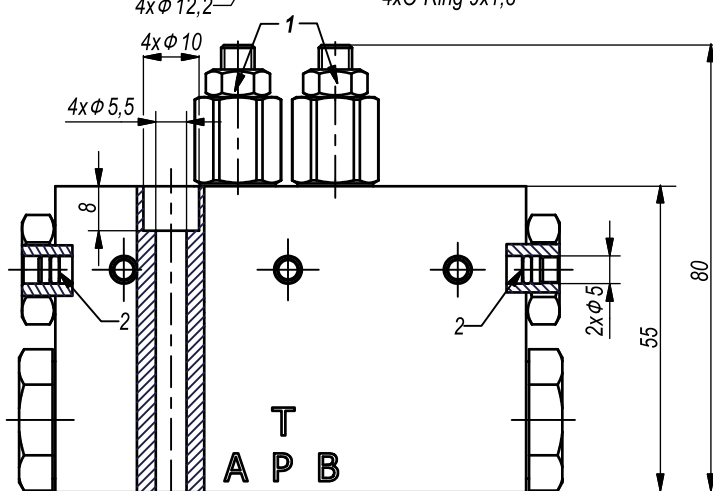
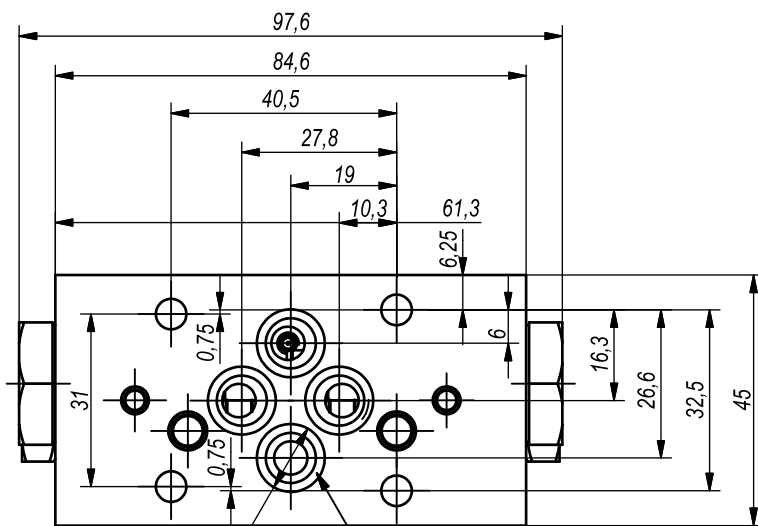
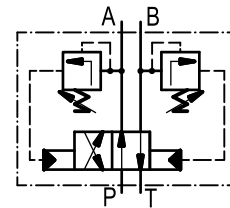


1

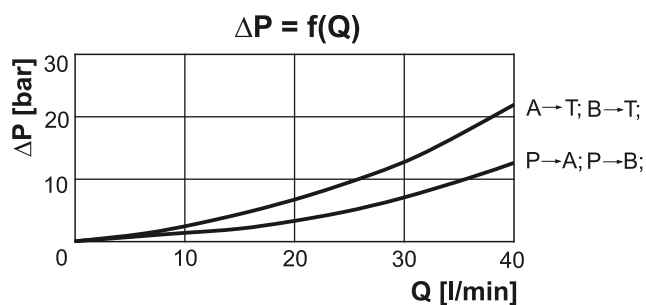
2

4/2RHA06 / 20



1 Valve type	
Code /	4/2RHA06
Description	Automatic switching valve /

2 Pressure range	
Code	20
Description	50 : 200 bar



Note:

- All performances and calibration are carried out by using hydraulic oil with viscosity approx 46 cSt at 50 °C.
- Initial switching of the directional control valve
 - by push pins (position 2).
- Mounting plate:
 - acc. to ISO 4401-AB-03-4A (CETOP3)
- Tightening torque of the connecting screws on the mounting plate - 8,5 N.m.

TECHNICAL DATA		
General		
Ambient temperature	°C	-20...+50
Hydraulic		
Working pressure P_w	bar	50...200
Pressure adjustment of relief valves (position 1)	bar	$P_w + 10\%P_w$
Flow rate	L/min	3...40
Working fluid - mineral oil		
- viscosity	mm ² /s	10...100
- filtration level	µm	25 or better
- temperature	°C	-20...+80