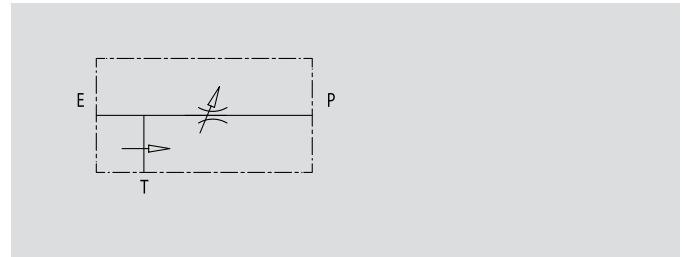


# 3 Port Flow Control Valve Excess To Tank

TIPO / TYPE  
**RFP3**

SCHEMA IDRAULICO  
HYDRAULIC DIAGRAM



## 3 PORT FLOW CONTROL VALVE EXCESS TO TANK

### USE AND OPERATION:

This valve enables to keep "P" flow constant to a certain setting, independently of the required pressure or the inlet flow of the valve. Exceeded flow is drained directly in T (tank).

### MATERIALS AND FEATURES:

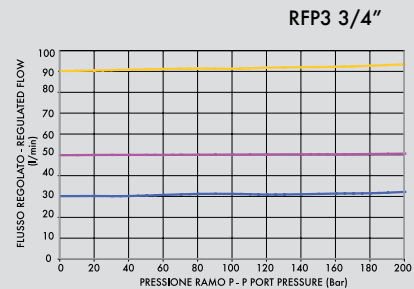
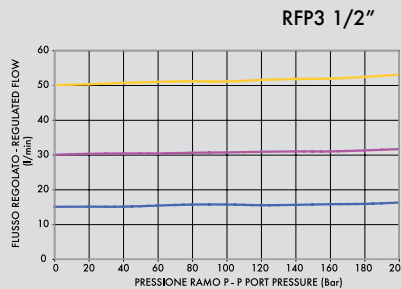
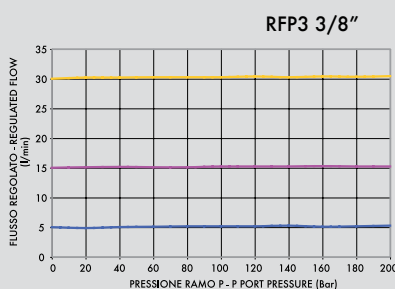
Body: zinc-plated steel  
Internal parts: hardened and ground steel  
Seal: BUNA N standard  
Tightness: by diameter combination. Minor leakage (few drops per minute)

### APPLICATIONS:

Connect E to the pressure flow and P to the net where flow adjustment is needed. Connect T to the tank. To adjust inlet pressure in P screw in or off hand wheel after loosening the locknut.

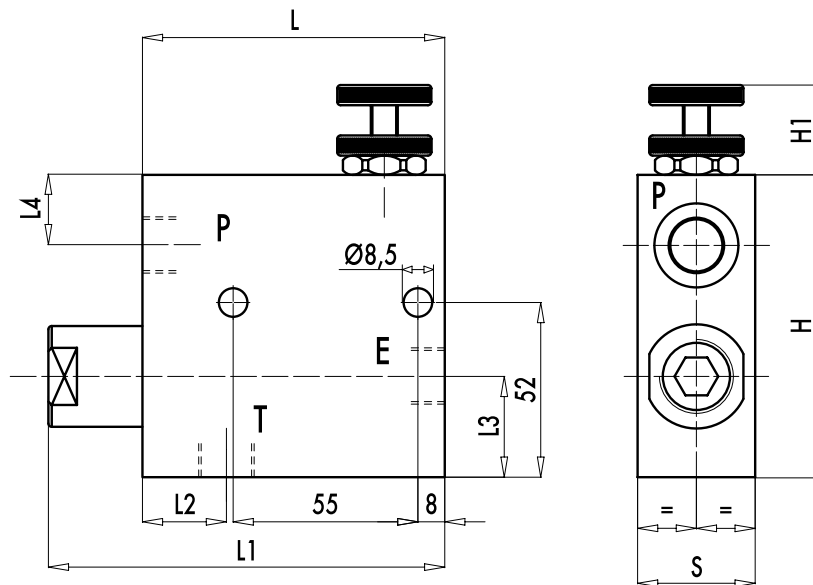
### COMPENSATION CURVE

Oil temperature: 50° C - Oil viscosity: 30 cSt



CODICE CODE	SIGLA TYPE	PORTATA MAX ENTRANTE MAX INLET FLOW Lt. / min	PORTATA MAX REGOLATA MAX ADJUSTED FLOW Lt. / min	PRESSIONE MAX MAX PRESSURE Bar
----------------	---------------	---	--	--------------------------------------

<b>3FCVT06</b>	RFP3 3/8"	60	50	350
<b>3FCVT08</b>	RFP3 1/2"	80	60	350
<b>3FCVT12</b>	RFP3 3/4"	120	100	350



CODICE CODE	SIGLA TYPE	E - P - T GAS	L mm	L1 mm	L2 mm	L3 mm	L4 mm	H mm	H1 mm	S mm	PESO WEIGHT kg
<b>3FCVT06</b>	RPF3 3/8"	G3/8"	90	118	25	32	20	90	40	35	2,170
<b>3FCVT08</b>	RPF3 1/2"	G1/2"	90	118	25	32	20	90	40	35	2,096
<b>3FCVT12</b>	RPF3 3/4"	G3/4"	90	122	27	36	19	102	40	50	3,344