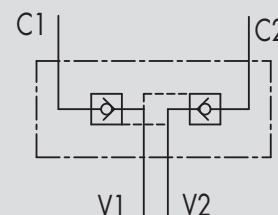
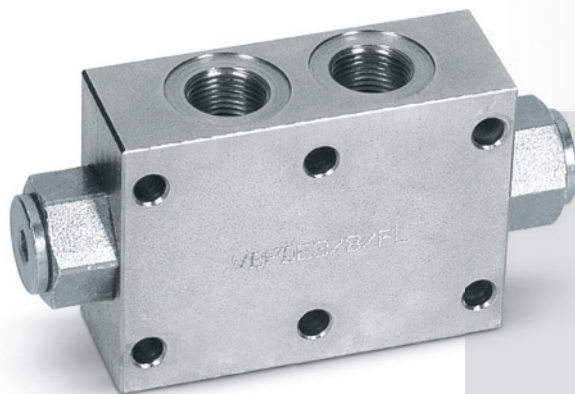


1.6 - VALVOLE DI BLOCCO PILOTATE A DOPPIO EFFETTO FLANGIABILI

TIPO/TYPE
VBPDE FL

1.6 - DOUBLE PILOT OPERATED CHECK VALVES FLANGEABLE

SCHEMA IDRAULICO
HYDRAULIC DIAGRAM



IMPIEGO:

Valvola utilizzata per bloccare in posizione un cilindro in entrambi i sensi, consentendo il flusso in una direzione ed impedendolo in senso contrario fino a quando non viene applicata la pressione di pilotaggio. Il montaggio a flangia permette il montaggio direttamente sull'attuatore.

MATERIALI E CARATTERISTICHE:

Corpo: acciaio zincato
Componenti interni: acciaio temprato termicamente e rettificato
Guarnizioni: BUNA N standard
Tenuta: a cono guidato. Non ammette trafilamenti.

MONTAGGIO:

Collegare V1 e V2 all'alimentazione e C1 e C2 all'attuatore tramite flangiatura.

A RICHIESTA:

- senza guarnizione OR sul pistone
- molla 1 Bar
- molla 8 Bar

USE AND OPERATION:

Pilot check valves are used to block the cylinder in both directions. Flow is free in one direction and blocked in the reverse direction until pilot pressure is applied. Face mounting enables assembly directly on the cylinder.

MATERIALS AND FEATURES:

Body: zinc-plated steel
Internal parts: hardened and ground steel
Seals: BUNA N standard
Poppet type: any leakage.

APPLICATIONS:

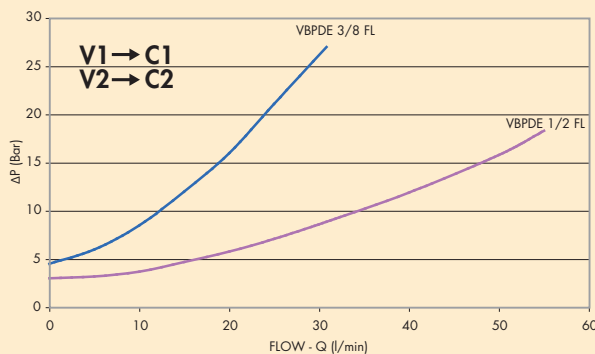
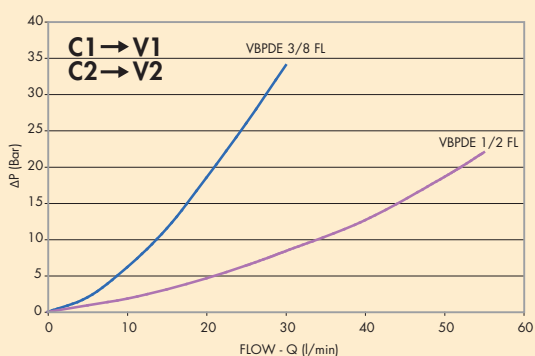
Connect V1 and V2 to the pressure flow and C1 and C2 to the actuator through the flange.

ON REQUEST:

- without seal on pilot piston
- 1 Bar spring
- 8 Bar spring

PERDITE DI CARICO PRESSURE DROPS CURVE

Temperatura olio: 50°C - Viscosità olio: 30 cSt
Oil temperature: 50°C - Oil viscosity: 30 cSt





1

CODICE
CODE

SIGLA
TYPE

RAPP.PILOT.
PILOT RATIO

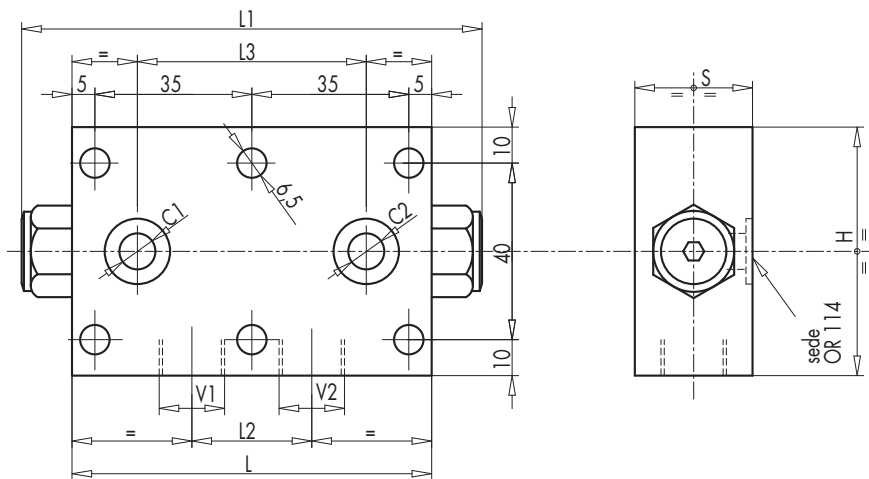
PORTATA MAX
MAX FLOW
Lt./min

PRESSIONE MAX
MAX PRESSURE
Bar

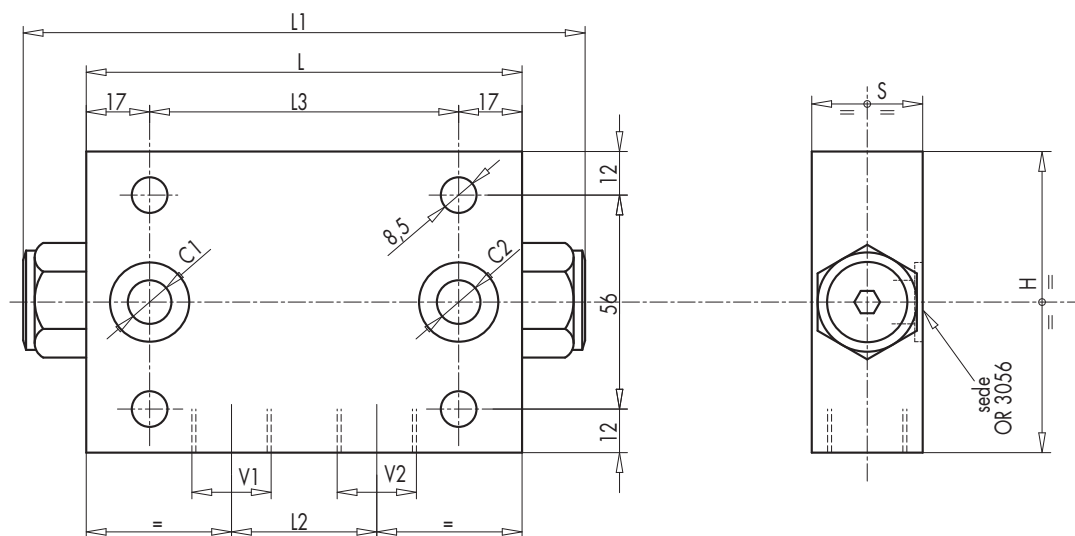
PRESSIONE APERTURA
CRACKING PRESSURE
Bar

V0185	VBPDE 3/8" FL	1 : 5,5	30	350	4,5
V0195	VBPDE 1/2" FL	1 : 4,5	55	350	3

VBPDE 3/8" FL



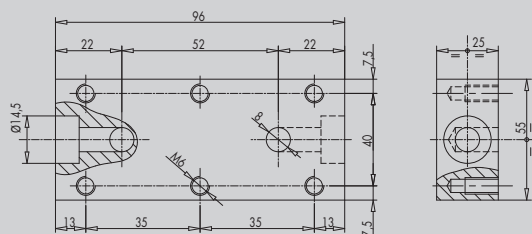
VBPDE 1/2" FL



CODICE CODE	SIGLA TYPE	V1 - V2	C1 - C2	L	L1	L2	L3	H	S	PESO WEIGHT
		GAS	mm	mm	mm	mm	mm	mm	mm	Kg
V0185	VBPDE 3/8" FL	G 3/8"	Ø 6,5	80	113	30	52	60	30	1,018
V0195	VBPDE 1/2" FL	G 1/2"	Ø 11	115	147	39	81	80	35	2,362

BASETTE PER VALVOLE / VALVE'S FLANGES:

TIPO / TYPE B5000 (3/8")



TIPO / TYPE B5500 (1/2")

