



# HYDRAULIC 3 PORT PRESSURE COMPENSATED ADJUSTABLE FLOW CONTROL

**3/4" BSP PORTS 0-30GPM**

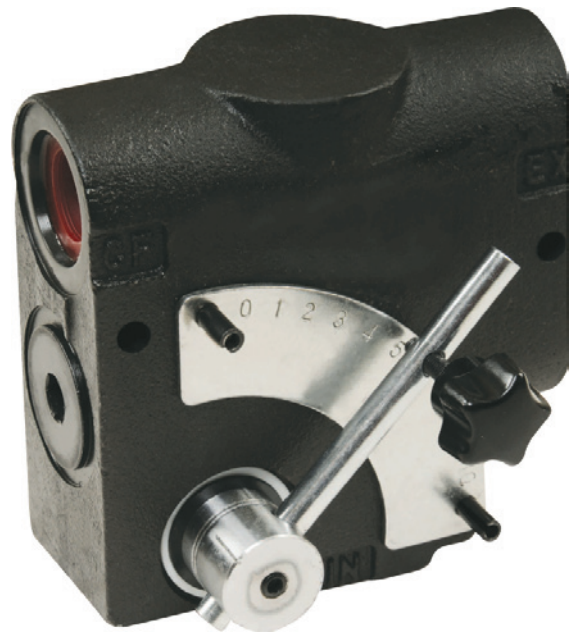
## DESCRIPTION

The Flowfit hydraulic 3 port adjustable flow control valve will start or stop a hydraulic cylinder or hydraulic motor and vary speed over a wide range. Once the flow control lever has been positioned a constant speed will be maintained.

Excess flow is returned to tank or used to power another function via port 'EF'.

IN = INPUT FLOW, CF = CONTROLLED FLOW  
AND EF = EXCESS FLOW

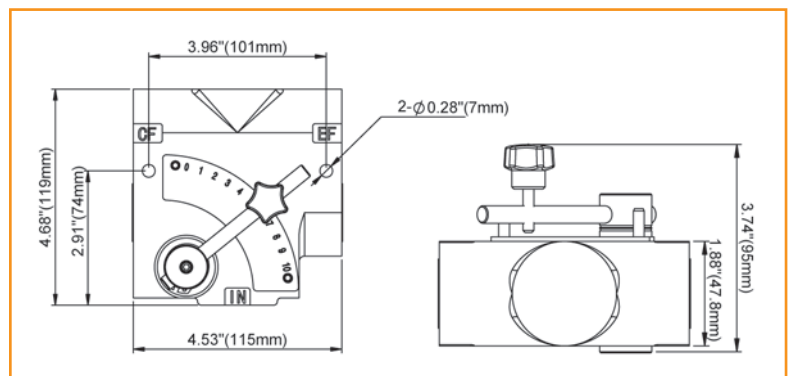
The flow control valve is pressure compensated to maintain a constant output flow despite pressure changes on the controlled flow or excess flow line or load variations.



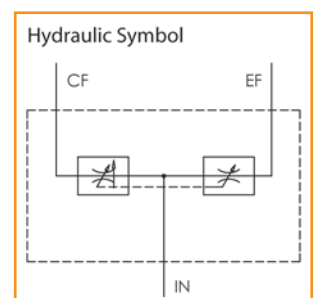
## TECHNICAL SPECS

- 3000 PSI MAX OPERATING PRESSURE
- MAX FLOW CAPACITY: 30GPM / 114L/MIN
- SIDE PORT CONFIGURATION
- ONCE SET, MAINTAINS CONSTANT SPEED REGARDLESS OF LOAD VARIATION
- EXCESS FLOW IS RETURNED TO TANK OR USED TO POWER ANOTHER FUNCTION
- ALL PORTS 3/4" BSP
- PLUGGING 'EF' EXCESS FLOW PORT ALLOWS USE WITH PRESSURE COMPENSATED PUMPS
- BOTH OUTLETS ARE PRESSURE COMPENSATED

## INSTALLATION DIMENSIONS



PART NUMBER	DESCRIPTION	PORT SIZE	FLOW RANGE	LIST PRICE
ZZ005422	3/4" 3 port flow control	3/4" BSP	0-30 GPM	





# HYDRAULIC 3 PORT PRESSURE COMPENSATED ADJUSTABLE FLOW CONTROL C/W RELIEF VALVE

**1/2" BSP PORTS 0-30GPM**

## DESCRIPTION

The Flowfit hydraulic 3 port adjustable flow control valve will start or stop a hydraulic cylinder or hydraulic motor and vary speed over a wide range. Once the flow control lever has been positioned a constant speed will be maintained.

Excess flow is returned to tank only via port 'EF'.  
**IN = INPUT FLOW, CF = CONTROLLED FLOW  
 AND EF = EXCESS FLOW**

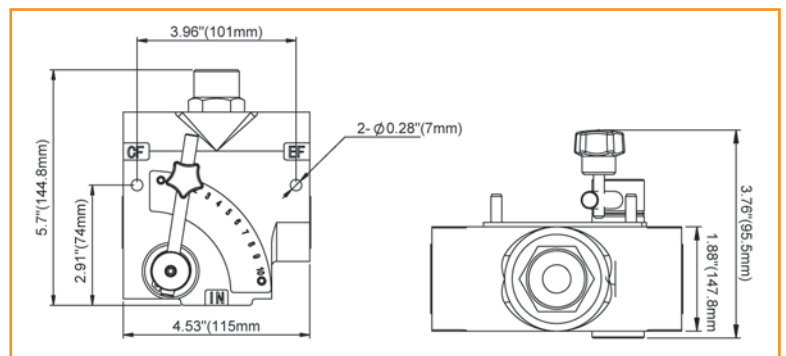
The flow control valve is pressure compensated to maintain a constant output flow despite pressure changes on the controlled flow 'CF' port.



## TECHNICAL SPECS

- 3000 PSI MAX OPERATING PRESSURE
- MAX FLOW CAPACITY: 30GPM / 114L/MIN
- SIDE PORT CONFIGURATION
- ONCE SET, MAINTAINS CONSTANT SPEED REGARDLESS OF LOAD VARIATION
- EXCESS FLOW IS RETURNED TO TANK ONLY
- ALL PORTS 1/2" BSP
- PLUGGING 'EF' EXCESS FLOW PORT ALLOWS USE WITH PRESSURE COMPENSATED PUMPS
- ADJUSTABLE RELIEF PRESET AT 2500PSI
- RELIEF VALVE ADJUSTABLE 1000 TO 3000PSI

## INSTALLATION DIMENSIONS



PART NUMBER	DESCRIPTION	PORT SIZE	FLOW RANGE	LIST PRICE
ZZ005423	1/2" 3 PORT FLOW CONTROL C/W RV	1/2" BSP	0-30 GPM	.

