

# ELECTROMAGNETIC CLUTCHES

10 daNm ELECTROMAGNETIC CLUTCHES .....	469
FLANGES FOR 10 daNm ELECTROMAGNETIC CLUTCHES .....	470
10 daNm ELECTROMAGNETIC CLUTCHES .....	471
FLANGES FOR 10 daNm ELECTROMAGNETIC CLUTCHES .....	472
14 daNm ELECTROMAGNETIC CLUTCHES .....	473
FLANGES FOR 14 daNm ELECTROMAGNETIC CLUTCHES .....	474
14 daNm ELECTROMAGNETIC CLUTCHES .....	475
FLANGES FOR 14 daNm ELECTROMAGNETIC CLUTCHES .....	476
21 daNm ELECTROMAGNETIC CLUTCHES .....	477
FLANGES FOR 21 daNm ELECTROMAGNETIC CLUTCHES .....	478
50 daNm ELECTROMAGNETIC CLUTCHES .....	479
FLANGES FOR 50 daNm ELECTROMAGNETIC CLUTCHES .....	480

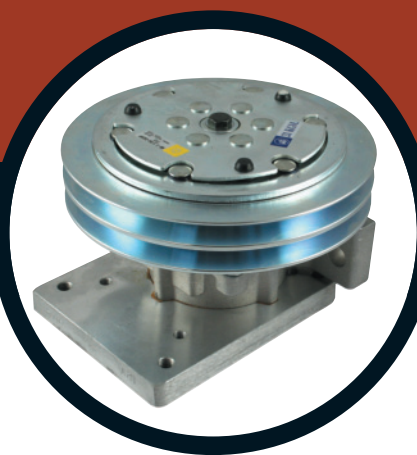
The most powerful range in the uk up to 60 danm off the shelf.

Brand new electromagnetic clutch and pump assemblies are commonly used in marine, agricultural, offroad and general industrial applications such as remote hydraulics in service trucks, boats, trucks with automatic transmissions,fram tractors and snow ploughs.

During assembly please make sure there is no oil or grease traces on the pulley surfaces which must be completely dry and clean.

Running in of the full range of electromagnetic clutches is required to obtain the desired rated torque value. Running in is carried out by engaging and disengaging clutch at high speed several times with the pump in the unload position.

When assembling the electromagnetic clutches with any front driving flange please check for correct coupling alignment, but do not exceed rated torque because this would cause slippage of the contact surface where the belts are located. This stage must not last more than 5 seconds as coils within the clutch will burn out.

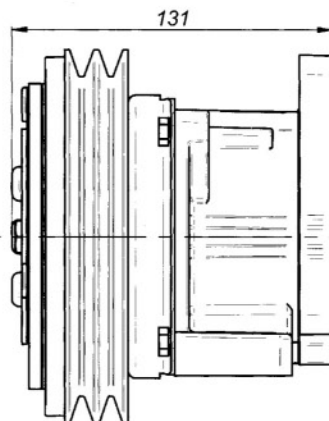
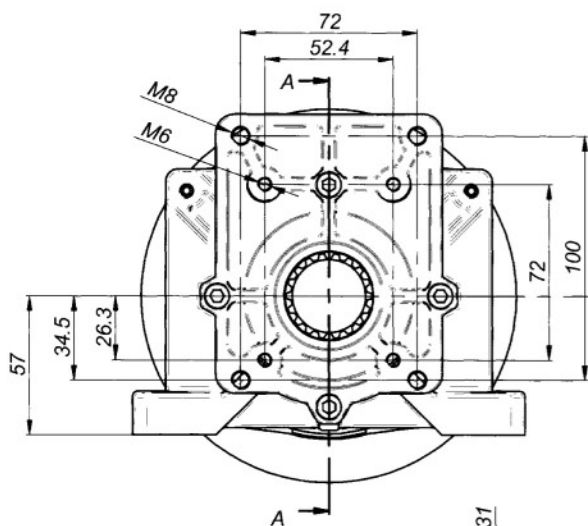


# 10 daNm ELECTROMAGNETIC CLUTCHES

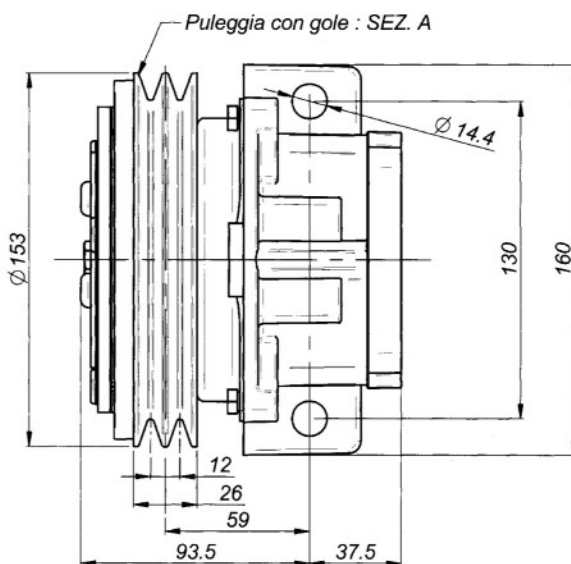
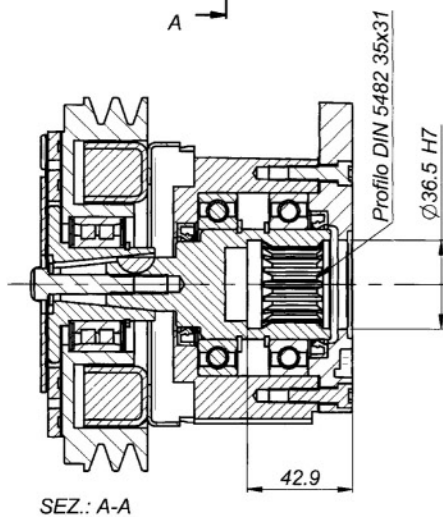
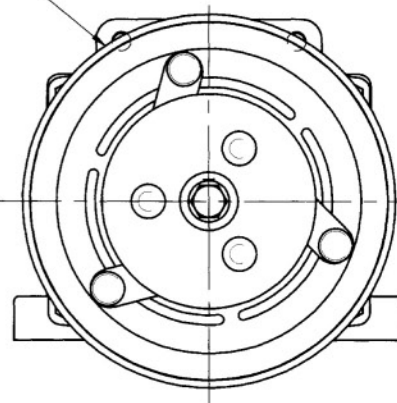


SERIE: 30901 12 Volt

SERIE: 30903 24 Volt



Cavo elettrico 2x2.5 per alimentazione dell' innesto elettromagnetico .  
Electromagnetic clutch 2x2.5 feeding cable



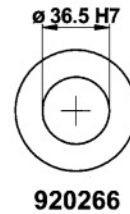
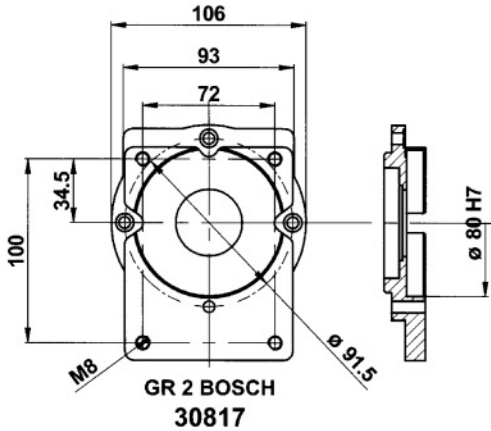
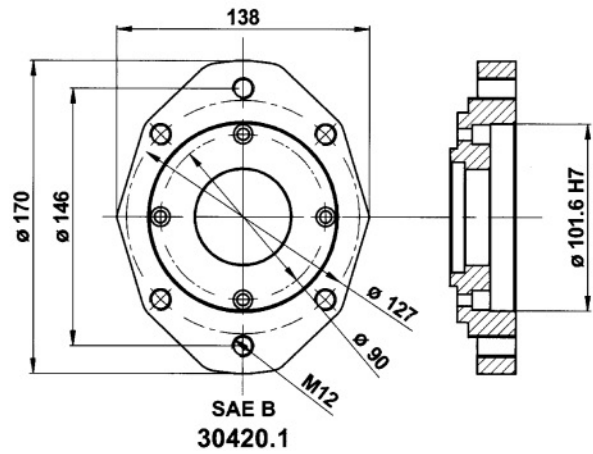
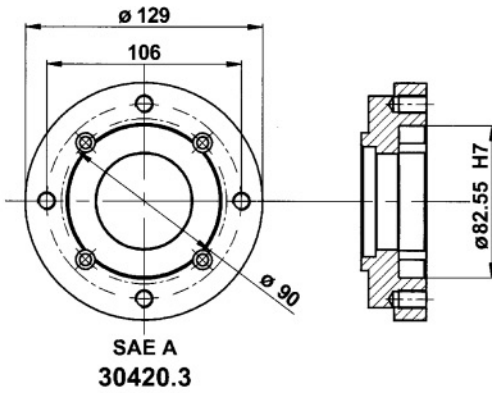
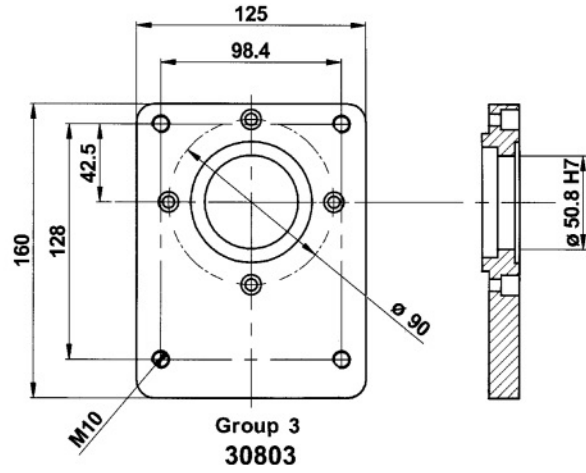
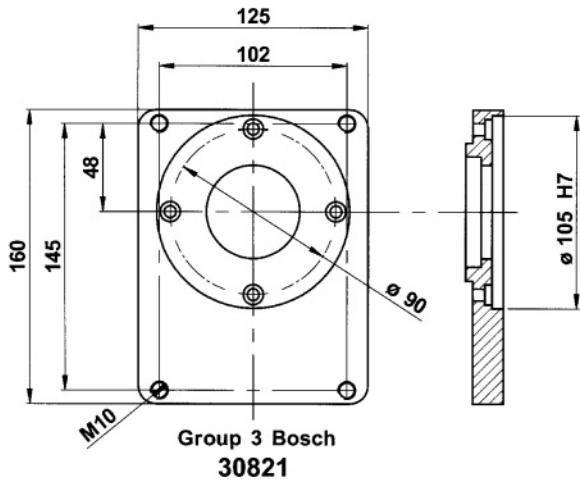
Nominal torque	7,8 daNm		Connection time	25 m/sec
Static torque	12,5 daNm		Disconnection time	40 m/sec
Dynamic torque	8,5 daNm	at 500 rpm	Minimum time between two connection	20 sec
	7,0 daNm	at 1000 rpm		
	4,2 daNm	at 1500 rpm		
	3,5 daNm	at 2000 rpm	Max speed	5000 rpm
	2,7 daNm	at 2500 rpm	Weight	5,5 Kg
	2,5 daNm	at 3000 rpm		

Electric absorption	Resistance ( Ω )		Current ( A )		Power ( W )	
	20° C	120° C	20° C	120° C	20° C	120° C
12 V DC	4,00	5,60	3,33	2,00	40,00	24,00
24 V DC	20,00	28,00	1,26	0,77	30,30	18,18

All technical data are at 20°C / at 120 °C the performance are less 20%  
All electromagnetec clutches are reversible.

PART NO.	DESCRIPTION	PRICE
29 - 30901	Electromagnetic clutch 12V. 10 Kgm. Fl.1/2	£448.08
29 - 30903	Electromagnetic clutch 24V. 10 Kgm. Fl.1/2	£448.08
29 - 30903/SA	Electromagnetic clutch 24V. 10 Kgm. Fl. SAE A	£448.08
29 - 30909	Electromagnetic clutch 12V. 10 Kgm. Fl.3	£448.08
29 - 30911	Electromagnetic clutch 24V. 10 Kgm. Fl.3	£448.08
29 - 30917	Electromagnetic clutch 12V. 10 Kgm. Fl. 2 Bosch	£448.08
29 - 30919	Electromagnetic clutch 24V. 10 Kgm. Fl. 2 Bosch	£448.08
29 - 30925	Electromagnetic clutch 12V. 10 Kgm. Fl. 3 Bosch	£448.08
29 - 30927	Electromagnetic clutch 24V. 10 Kgm. Fl. 3 Bosch	£448.08

If the part number needed is not listed please ask the Flowfit Sales Team



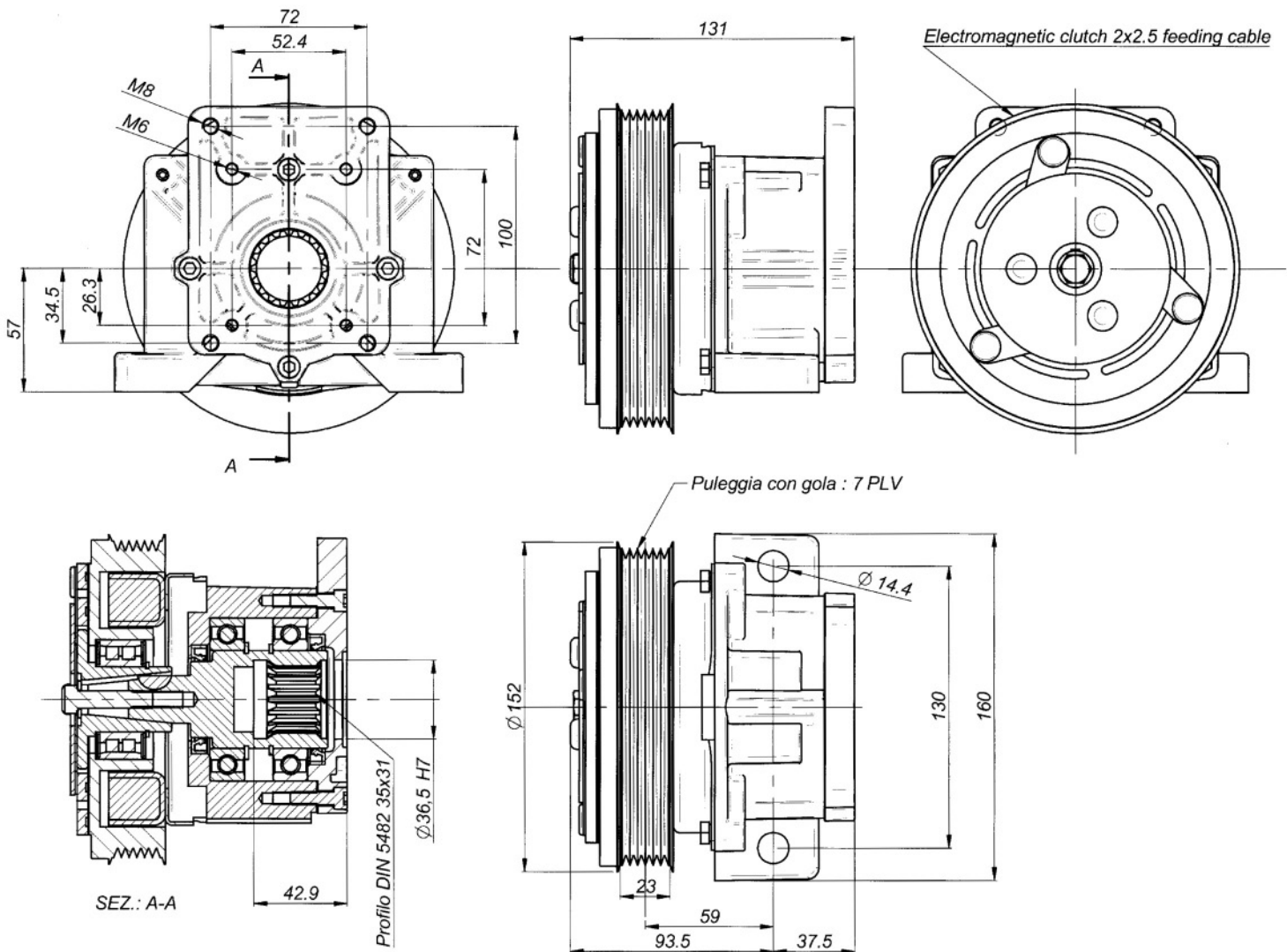
Electric absorption	CLUTCHES COMPLETE WITH ABOVE FLANGES				
	Gr.2 BOSCH	Gr.3	Gr. 3 BOSCH	SAE A	SAE B
12 Volt	30917	30909	30925	30901/SA	30901/SB
24 Volt	30919	30911	30927	30903/SA	30903/SB

# 10 daNm ELECTROMAGNETIC CLUTCHES



SERIES: 30901-1 12 Volt

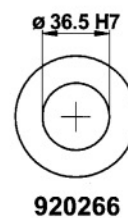
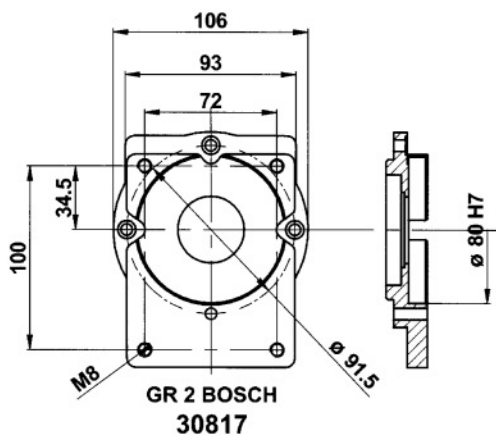
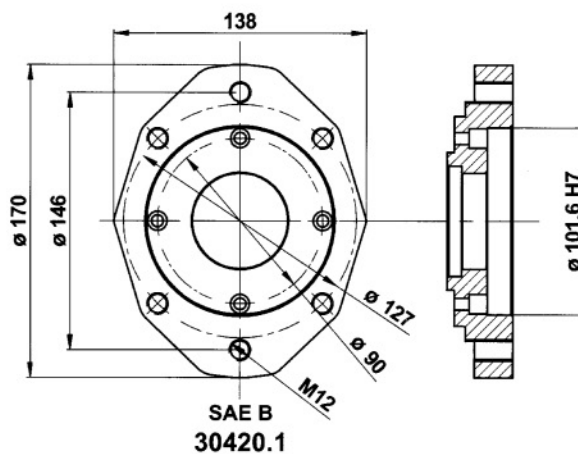
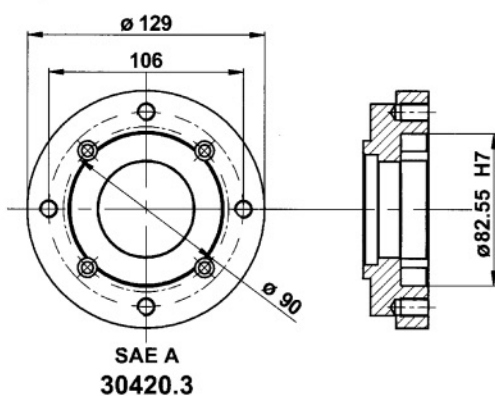
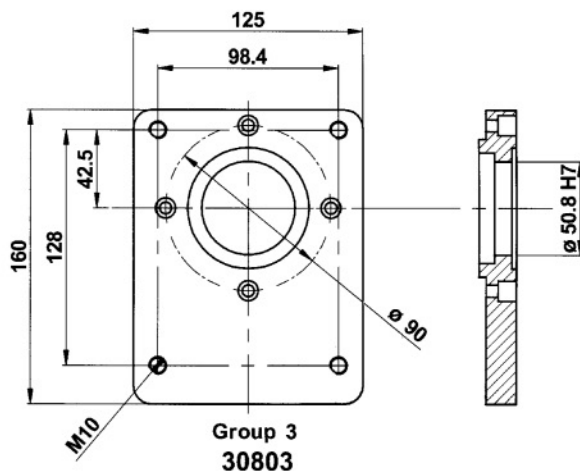
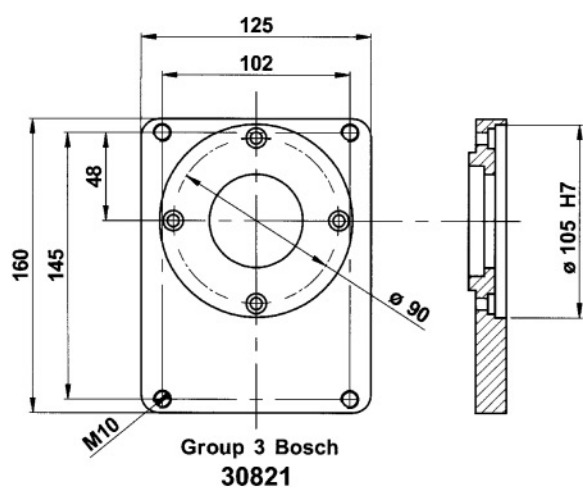
SERIES: 30903-1 24 Volt



Nominal torque	7,8 daNm	Connection time	25 m/sec			
Static torque	12,5 daNm	Disconnection time	40 m/sec			
Dynamic torque	8,5 daNm	at 500 rpm	Minimum time between two connection			
	7,0 daNm	at 1000 rpm				
	4,2 daNm	at 1500 rpm				
	3,5 daNm	at 2000 rpm	Max speed			
	2,7 daNm	at 2500 rpm		5000 rpm		
	2,5 daNm	at 3000 rpm	Weight	5,5 Kg		
Electric absorption	Resistance (Ω)		Current (A)		Power (W)	
	20° C	120° C	20° C	120° C	20° C	120° C
12 V DC	4,00	5,60	3,33	2,00	40,00	24,00
24 V DC	20,00	28,00	1,26	0,77	30,30	18,18
All technical data are at 20°C / at 120 °C the performance are less 20% All electromagneteic clutches are reversible.						

PART NO.	DESCRIPTION	PRICE
29 - 30901 - 1/7	Electromagnetic clutch 12V. 10 Kgm. FI.1/2 7 PLY RIBBED	£448.08
29 - 30903 - 1	Electromagnetic clutch 24V. 10 Kgm. FI.1/2	£448.08
29 - 30903 - 1/SA	Electromagnetic clutch 24V. 10 Kgm. FI. SAE A	£448.08
29 - 30909 - 1	Electromagnetic clutch 12V. 10 Kgm. FI.3	£448.08
29 - 30911 - 1	Electromagnetic clutch 24V. 10 Kgm. FI.3	£448.08
29 - 30917 - 1	Electromagnetic clutch 12V. 10 Kgm. FI. 2 Bosch	£448.08
29 - 30919 - 1	Electromagnetic clutch 24V. 10 Kgm. FI. 2 Bosch	£448.08
29 - 30925 - 1	Electromagnetic clutch 12V. 10 Kgm. FI. 3 Bosch	£448.08
29 - 30927 - 1	Electromagnetic clutch 24V. 10 Kgm. FI. 3 Bosch	£448.08

If the part number needed is not listed please ask the Flowfit Sales Team



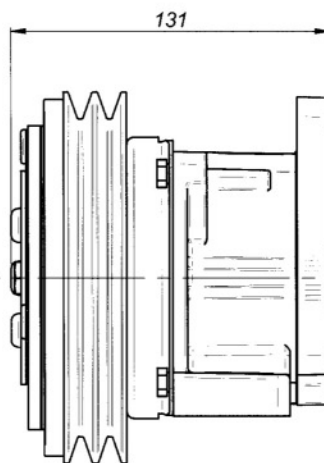
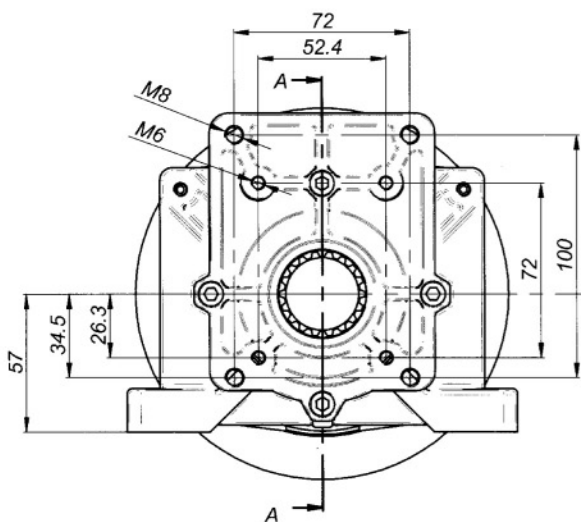
Electric absorption	CLUTCHES COMPLETE WITH ABOVE FLANGES				
	Gr.2 BOSCH	Gr.3	Gr. 3 BOSCH	SAE A	SAE B
12 Volt	30917-1	30909-1	30925-1	30901-1/SA	30901-1/SB
24 Volt	30919-1	30911-1	30927-1	30903-1/SA	30903-1/SB

# 14 daNm ELECTROMAGNETIC CLUTCHES

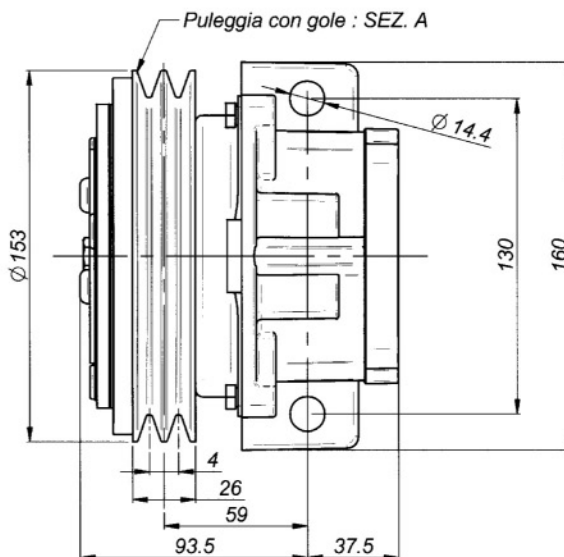
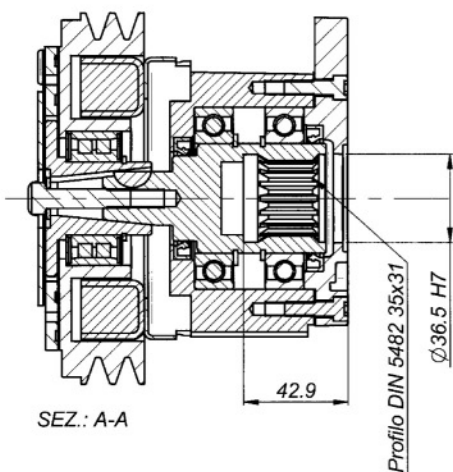
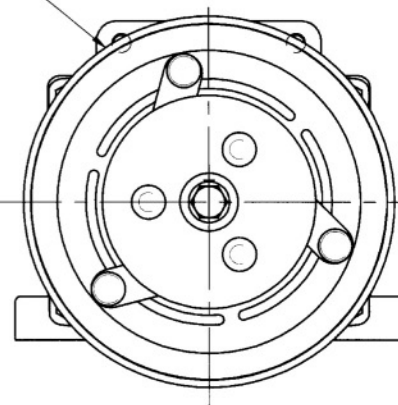


SERIE: 30929 12 Volt

SERIE: 30930 24 Volt



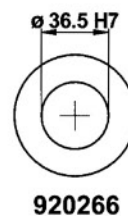
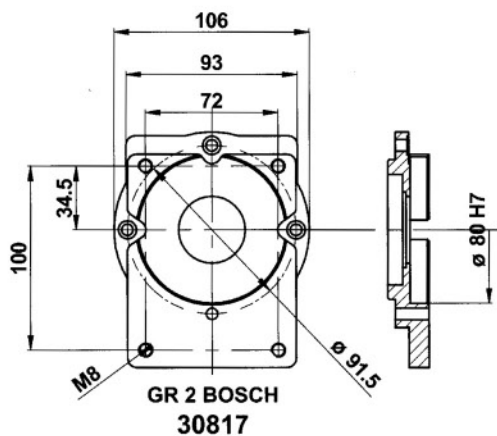
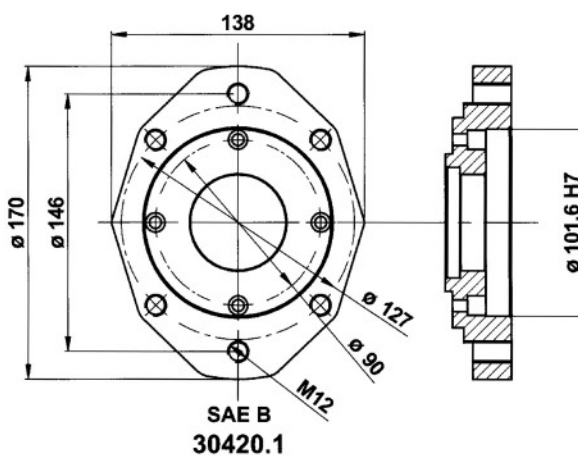
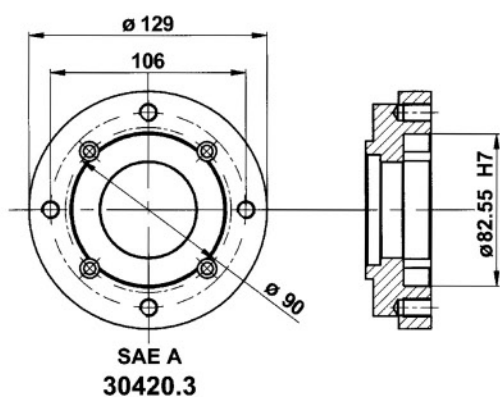
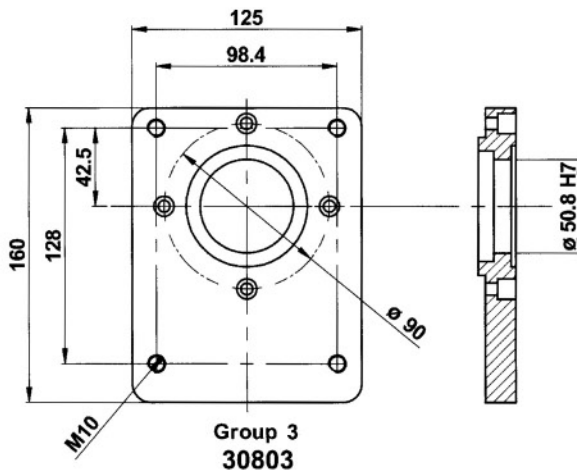
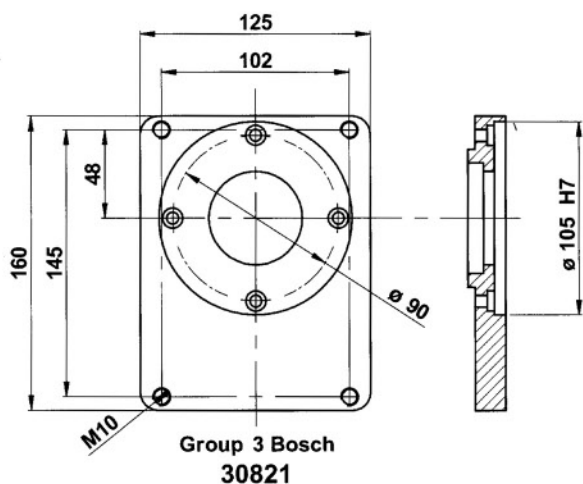
Cavo elettrico 2x2.5 per alimentazione dell'innesto elettromagnetico.  
Electromagnetic clutch 2x2.5 feeding cable



Nominal torque	11,8 daNm		Connection time	25 m/sec		
Static torque	14,0 daNm		Disconnection time	40 m/sec		
Dynamic torque	12,5 daNm	at 500 rpm	Minimum time between two connection	20 sec		
	11,0 daNm	at 1000 rpm				
	8,2 daNm	at 1500 rpm				
	7,5 daNm	at 2000 rpm	Max speed	5000 rpm		
	6,7 daNm	at 2500 rpm	Weight	5,5 Kg		
6,5 daNm	at 3000 rpm					
Electric absorption	Resistance (Ω)		Current (A)		Power (W)	
	20° C	120° C	20° C	120° C	20° C	120° C
12 V DC	4,00	5,60	3,33	2,00	40,00	24,00
24 V DC	20,00	28,00	1,26	0,77	30,30	18,18
All technical data are at 20°C / at 120 °C the performance are less 20% All electromagnetic clutches are reversible.						

PART NO.	DESCRIPTION	PRICE
29 - 30929	Electromagnetic clutch 12V. 14 Kgm. FI.1/2	£501.80
29 - 30929/SA	Electromagnetic clutch 12V. 14 Kgm. FI. SAE A	£543.73
29 - 30929/SB	Electromagnetic clutch 12V. 14 Kgm. FI. SAE B	£543.73
29 - 30930	Electromagnetic clutch 24V. 14 Kgm. FI.1/2	£501.80
29 - 30931	Electromagnetic clutch 12V. 14 Kgm. FI.3	£547.67
29 - 30932	Electromagnetic clutch 24V. 14 Kgm. FI.3	£547.67

If the part number needed is not listed please ask the Flowfit Sales Team

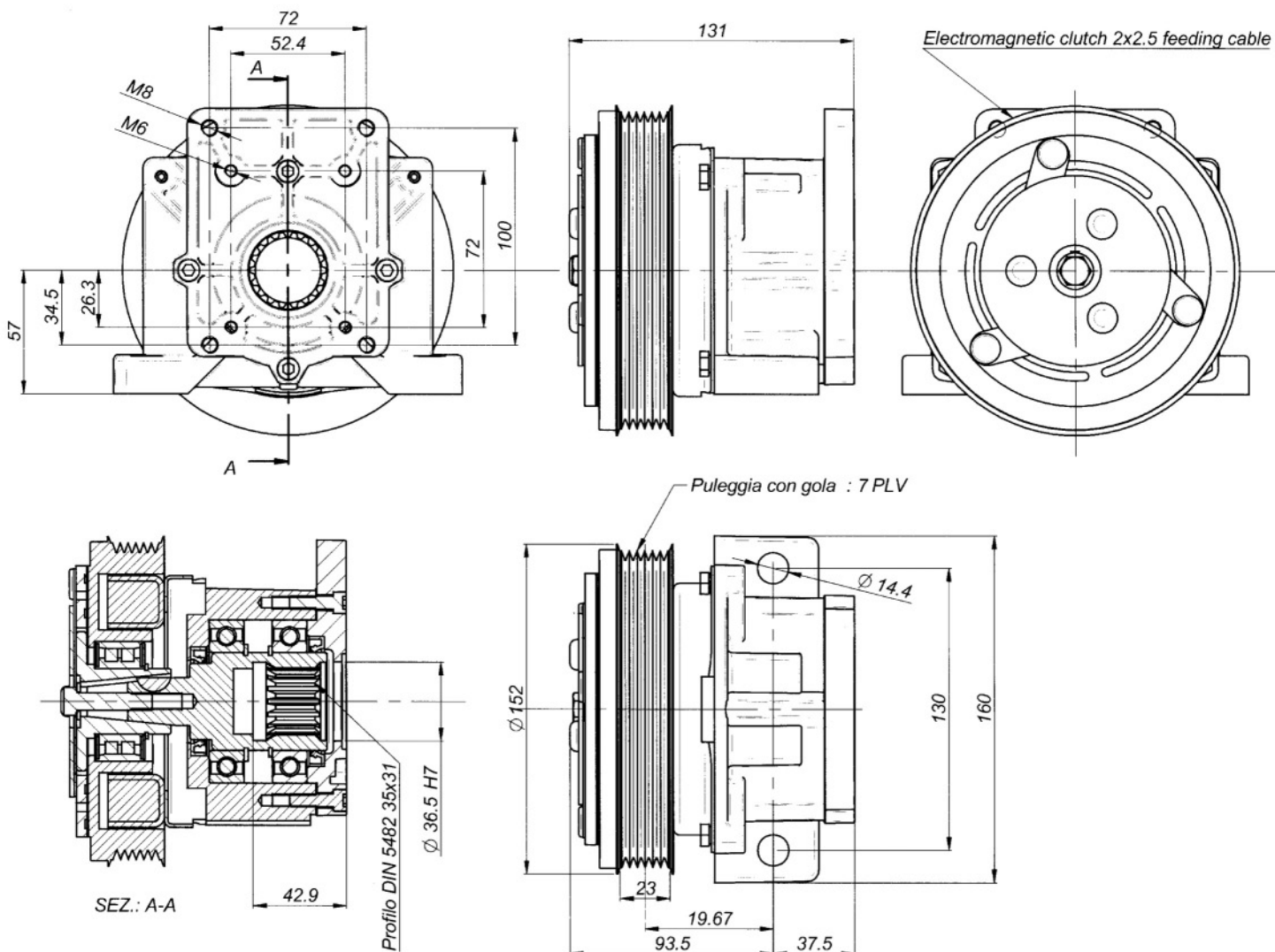


Electric absorption	CLUTCHES COMPLETE WITH ABOVE FLANGES				
	Gr.2 BOSCH	Gr.3	Gr. 3 BOSCH	SAE A	SAE B
12 Volt	30929/2B	30931	30931/3B	30929/SA	30929/SB
24 Volt	30930/2B	30932	30932/3B	30930/SA	30930/SB

# 14 daNm ELECTROMAGNETIC CLUTCHES

SERIES: 30929-1 12 Volt

SERIES: 30930-1 24 Volt

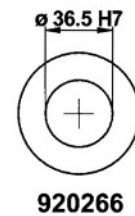
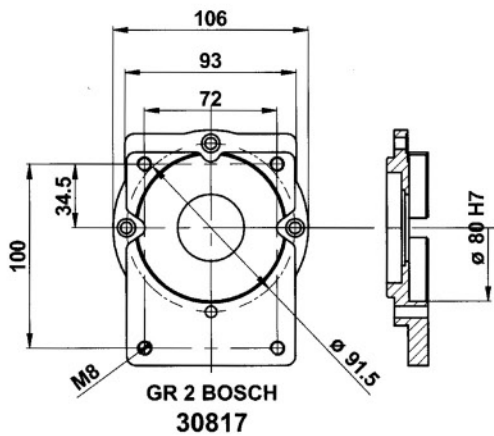
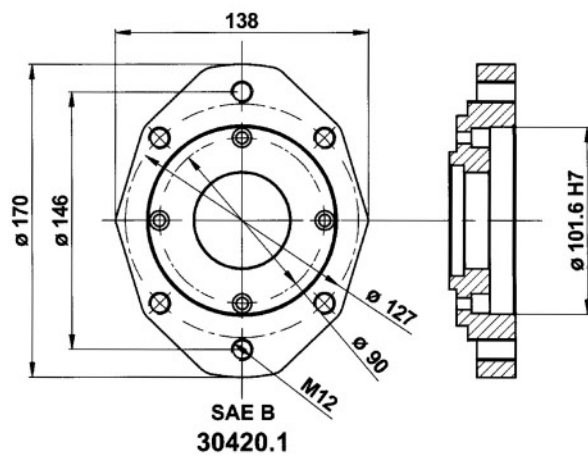
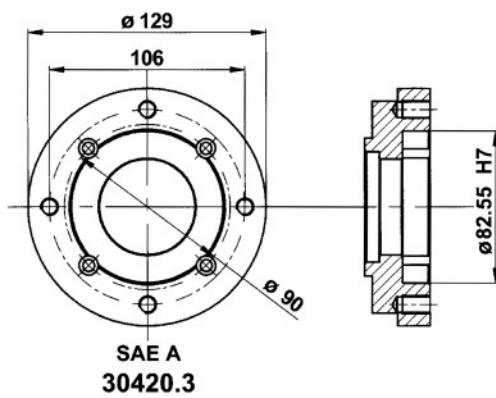
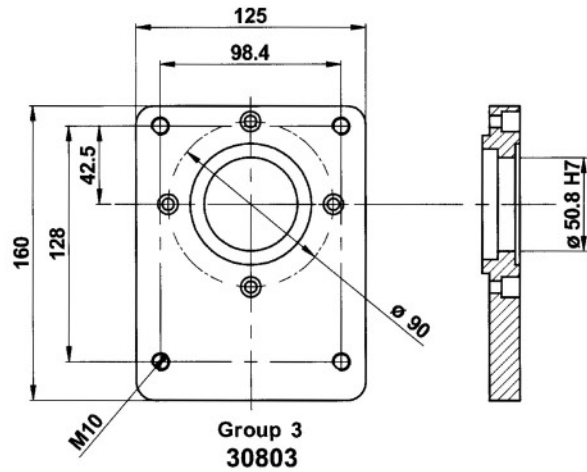
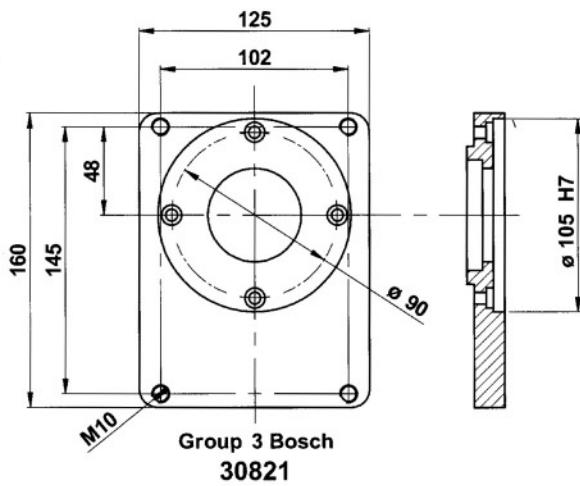


Nominal torque	11,8 daNm		Connection time	25 m/sec		
Static torque	14,0 daNm		Disconnection time	40 m/sec		
Dynamic torque	12,5 daNm	at 500 rpm	Minimum time between two connection	20 sec		
	11,0 daNm	at 1000 rpm				
	8,2 daNm	at 1500 rpm				
	7,5 daNm	at 2000 rpm	Max speed	5000 rpm		
	6,7 daNm	at 2500 rpm	Weight	5,5 Kg		
	6,5 daNm	at 3000 rpm				
Electric absorption	Resistance ( $\Omega$ )		Current (A)		Power (W)	
	20° C	120° C	20° C	120° C	20° C	120° C
12 V DC	4,00	5,60	3,33	2,00	40,00	24,00
24 V DC	20,00	28,00	1,26	0,77	30,30	18,18
All technical data are at 20°C / at 120 °C the performance are less 20% All electromagneteic clutches are reversible.						

PART NO.	DESCRIPTION	PRICE
29 - 30929 - 1/7	Electromagnetic clutch 12V. 14 Kgm. Fl.1/2 7 PLY RIBBED	£501.80
29 - 30929 - 1 /SA	Electromagnetic clutch 12V. 14 Kgm. Fl. SAE A	£543.70
29 - 30929 - 1 /SB	Electromagnetic clutch 12V. 14 Kgm. Fl. SAE B	£543.70
29 - 30930 - 1	Electromagnetic clutch 24V. 14 Kgm. Fl.1/2	£559.04
29 - 30931 - 1	Electromagnetic clutch 12V. 14 Kgm. Fl.3	£547.67
29 - 30932 - 1	Electromagnetic clutch 24V. 14 Kgm. Fl.3	£547.67

If the part number needed is not listed please ask the Flowfit Sales Team

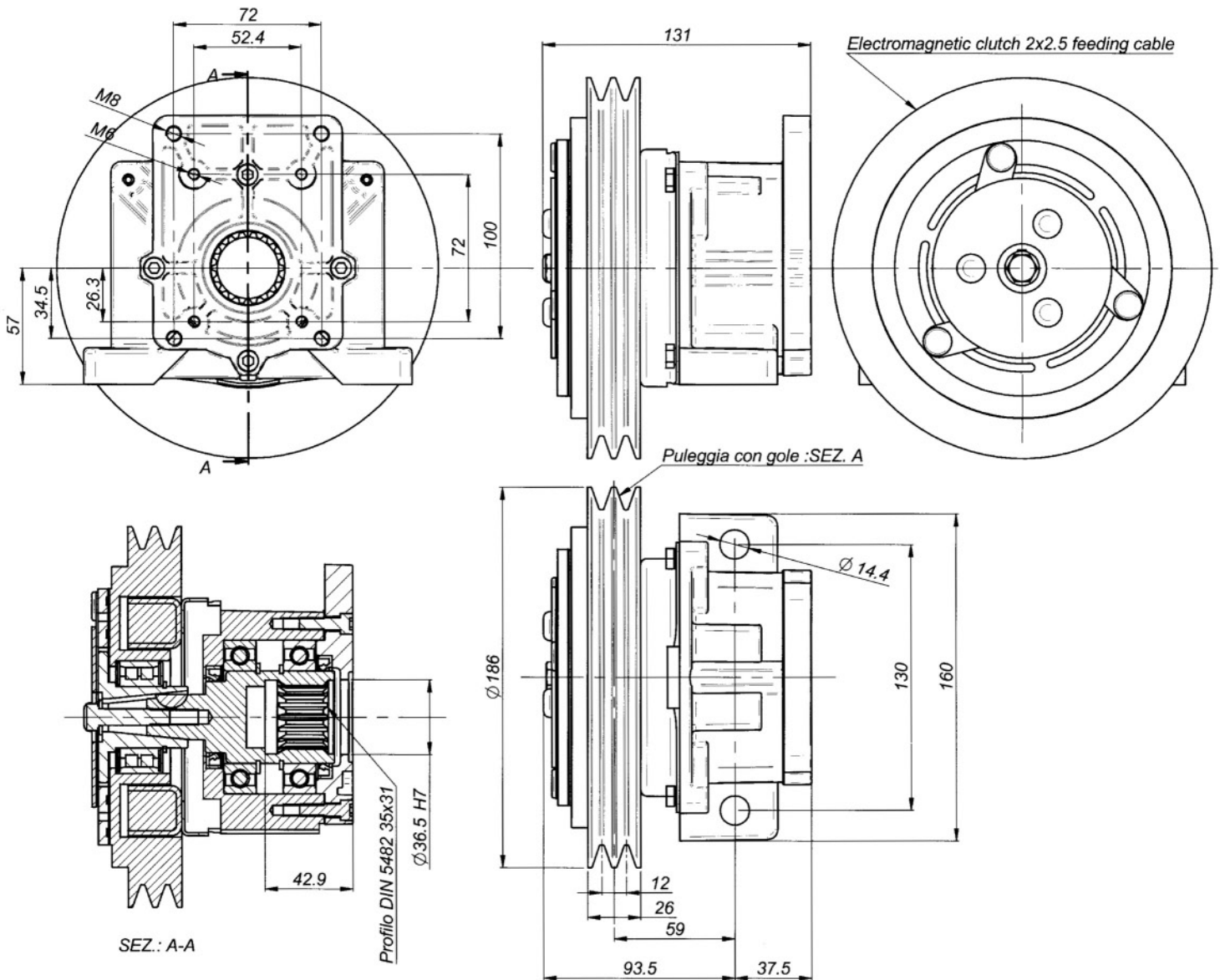




Electric absorption	CLUTCHES COMPLETE WITH ABOVE FLANGES				
	Gr.2 BOSCH	Gr.3	Gr. 3 BOSCH	SAE A	SAE B
12 Volt	30929/2B	30931	30931/3B	30929/SA	30929/SB
24 Volt	30930/2B	30932	30932/3B	30930/SA	30930/SB

# 21 daNm ELECTROMAGNETIC CLUTCHES

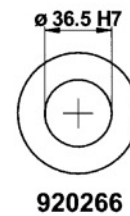
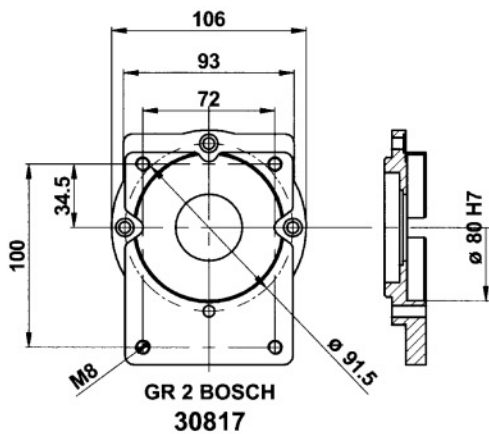
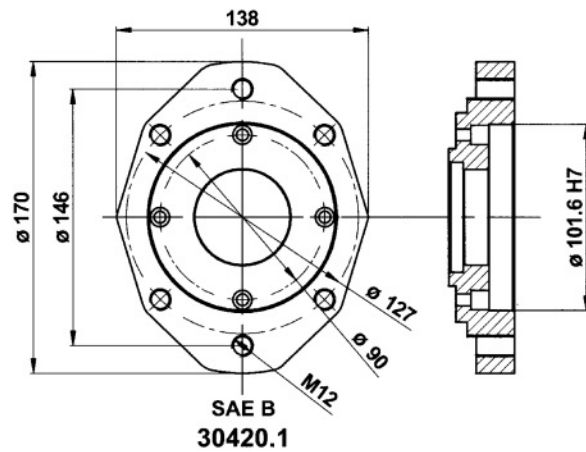
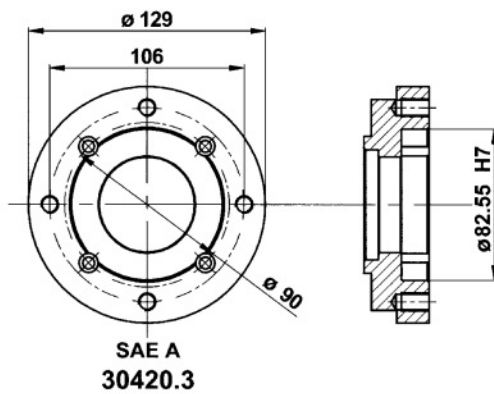
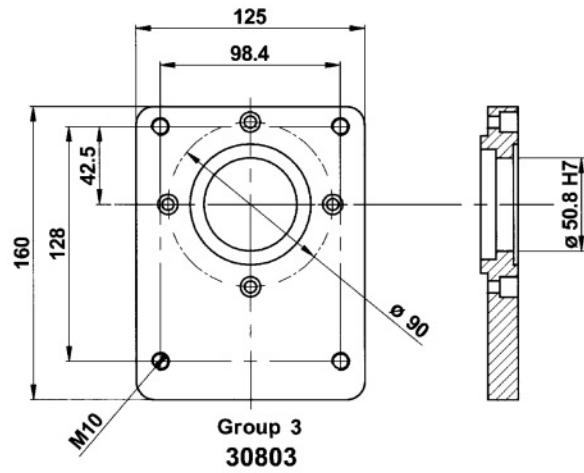
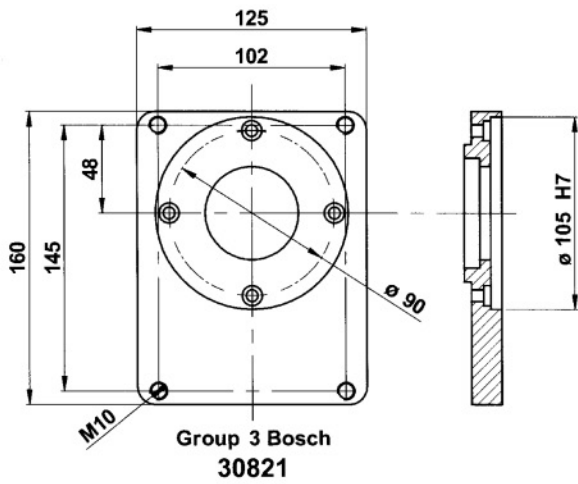
SERIES: 30990 12 Volt    SERIES: 30991 24 Volt



Nominal torque	16,0 daNm	Connection time	25 m/sec			
Static torque	21,0 daNm	Disconnection time	40 m/sec			
Dynamic torque	14,5 daNm	at 500 rpm	Minimum time between two connection			
	12,0 daNm	at 1000 rpm				
	9,5 daNm	at 1500 rpm	Max speed			
	8,8 daNm	at 2000 rpm				
	8,0 daNm	at 2500 rpm				
7,8 daNm	at 3000 rpm	Weight	8 Kg			
Electric absorption	Resistance (Ω)		Current (A)		Power (W)	
	20° C	120° C	20° C	120° C	20° C	120° C
12 V DC	2,96	3,97	4,05	2,71	48,70	32,50
24 V DC	12,30	16,60	1,95	1,31	47,00	30,70
All technical data are at 20°C / at 120 °C the performance are less 20%						
All electromagnetic clutches are reversible.						

PART NO.	DESCRIPTION	PRICE
29 - 30990	Electromagnetic clutch 12V. 21 Kgm. Fl.2	£863.42
29 - 30991	Electromagnetic clutch 24V. 21 Kgm. Fl.2	£863.42
29 - 30991/SB	Electromagnetic clutch 24V. 21 Kgm. Fl. SAE B	£904.05
29 - 30992	Electromagnetic clutch 12V. 21 Kgm. Fl.3	£890.95
29 - 30993	Electromagnetic clutch 24V. 21 Kgm. Fl.3	£890.95

If the part number needed is not listed please ask the Flowfit Sales Team



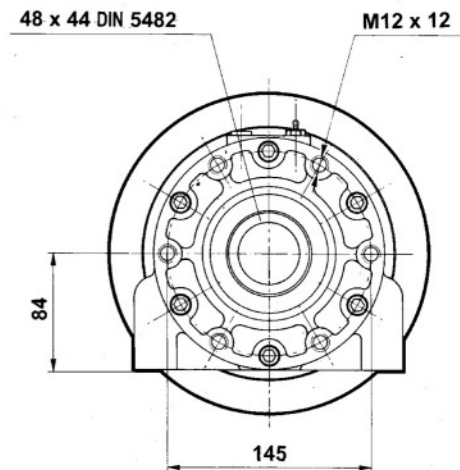
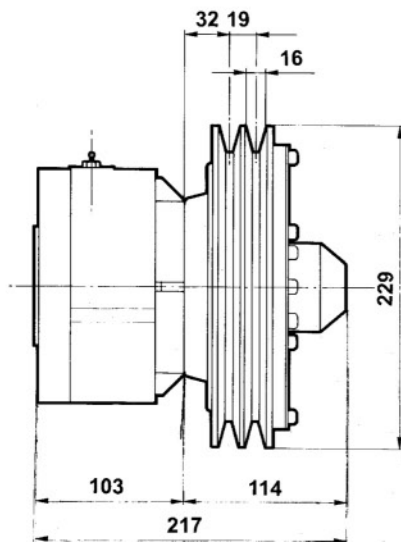
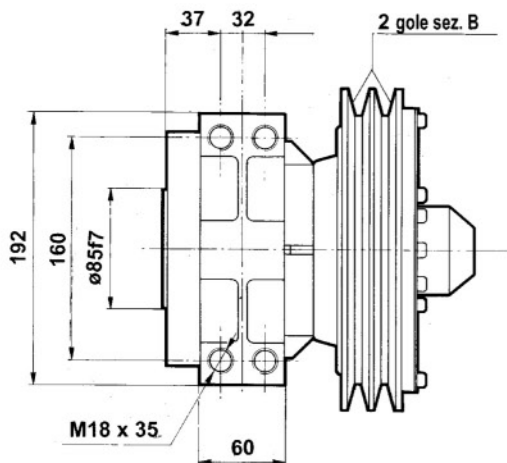
Electric absorption	CLUTCHES COMPLETE WITH ABOVE FLANGES				
	Gr.2 BOSCH	Gr.3	Gr. 3 BOSCH	SAE A	SAE B
12 Volt	30990/2B	30992	30992/3B	30990/SA	30990/SB
24 Volt	30991/2B	30993	30993/3B	30991/SA	30991/SB

# 50 daNm ELECTROMAGNETIC CLUTCHES



SERIES: 30940/SF 12 Volt

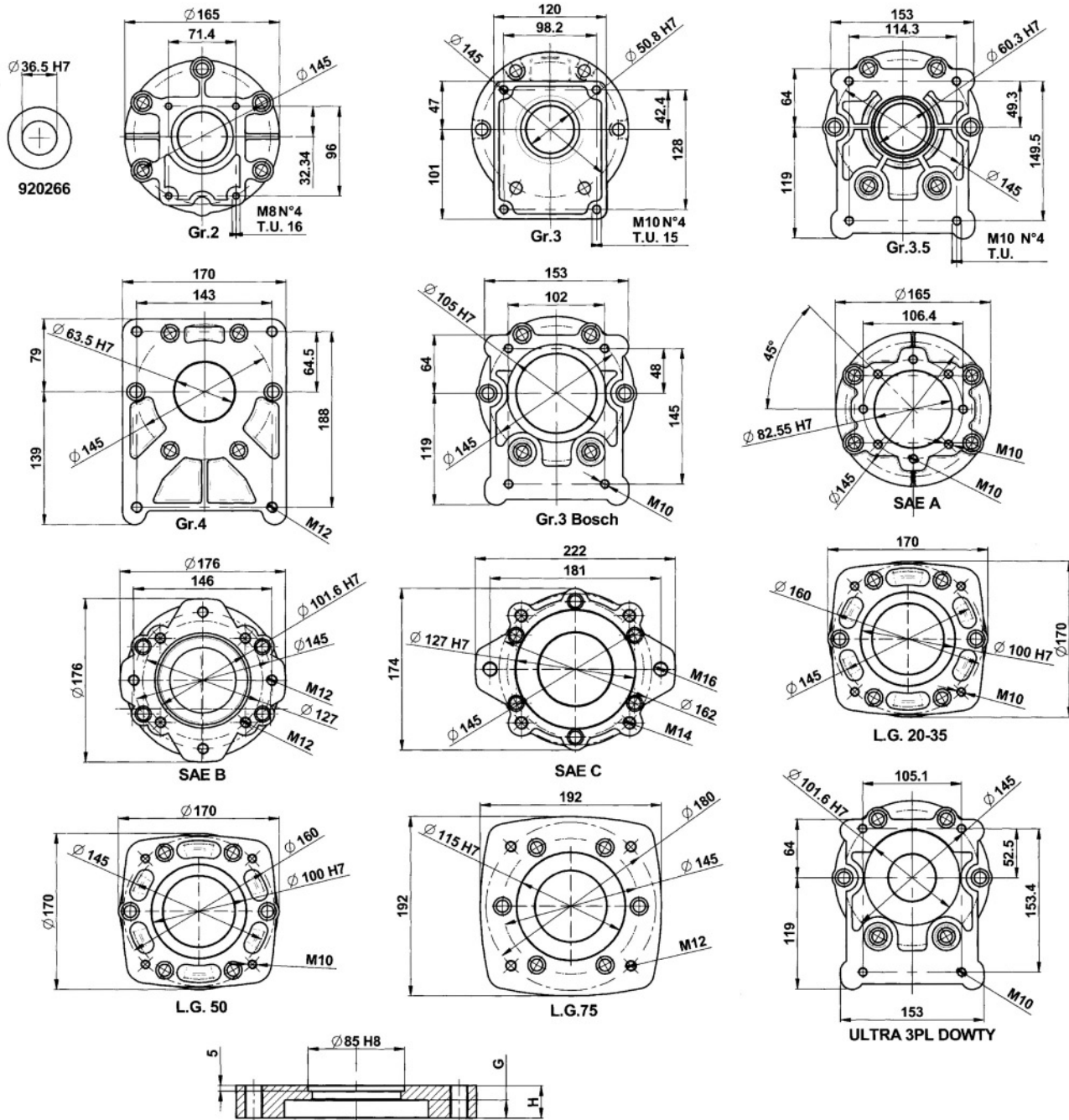
SERIES: 30941/SF 24 Volt



Nominal torque	38,0 daNm		Connection time	25 m/sec		
Static torque	50,0 daNm		Disconnection time	40 m/sec		
Dynamic torque	33,0 daNm	at 500 rpm	Minimum time between two connection	20 sec		
	31,5 daNm	at 1000 rpm				
	28,7 daNm	at 1500 rpm				
	28,0 daNm	at 2000 rpm	Max speed	5000 rpm		
	27,2 daNm	at 2500 rpm	Weight	20 Kg		
	27,0 daNm	at 3000 rpm				
Electric absorption	Resistance ( $\Omega$ )		Current (A)		Power (W)	
	20° C	120° C	20° C	120° C	20° C	120° C
12 V DC	1,81	2,60	6,60	4,62	80,00	56,00
24 V DC	7,40	10,50	3,25	2,30	78,00	54,60
All technical data are at 20°C / at 120 °C the performance are less 20% All electromagneteic clutches are reversible.						

PART NO.	DESCRIPTION	PRICE
29 - 30940	Electromagnetic clutch 12V. 30 Kgm. Fl.2	£2554.93
29 - 30941	Electromagnetic clutch 24V. 30 Kgm. Fl.2	£2554.93
29 - 30942	Electromagnetic clutch 12V. 30 Kgm. Fl.3	£2554.93

If the part number needed is not listed please ask the Flowfit Sales Team



FLANGE TYPE	Gr.2	Gr.3	Gr.3.5	Gr.4	Gr.3 BOSCH	SAE A	SAE B	SAE C	L.G. 20-35	L.G. 50	L.G.75	ULTRA 3PL DOWTY
H	21	23	24	23	19	25	25	28	34	41	41	24.5
G	17	21	11.5	16	12	21	12	16	25	32.5	33	10.5
FLANGE PART NO.	30400	30401	30402	30403	30417	30420	30422	30432	30461	30462	30463	30471

PART NO.	DESCRIPTION	PRICE
28 - 30400	Flange gr.2+socket capscrews	£103.50
28 - 30401	Flange gr.3+socket capscrews	£98.26
28 - 30402	Flange gr.3,5+socket capscrews	£93.02
28 - 30403	Flange gr.4+socket capscrews	£93.02
28 - 30417	Flange gr.3 Bosch+socket capscrews	£117.91
28 - 30420	Flange SAE A 2 holes+socket capscrews	£93.02
28 - 30421	Flange SAE B 2 holes+socket capscrews	£117.91
28 - 30422	Flange SAE B 4 holes+socket capscrews	£117.91
28 - 30431	Flange SAE C 2 holes+socket capscrews	£117.91
28 - 30432	Flange SAE C 4 holes+socket capscrews	£117.91
28 - 30461	Flange L.G. 20-35+socket capscrews	£117.91
28 - 30462	Flange L.G. 50+socket capscrews	£117.91
28 - 30463	Flange L.G. 75+socket capscrews	£117.91

If the part number needed is not listed please ask the Flowfit Sales Team

ABOVE ARE FLANGES ONLY AND DO NOT INCLUDE THE ELECTROMAGNETIC CLUTCH