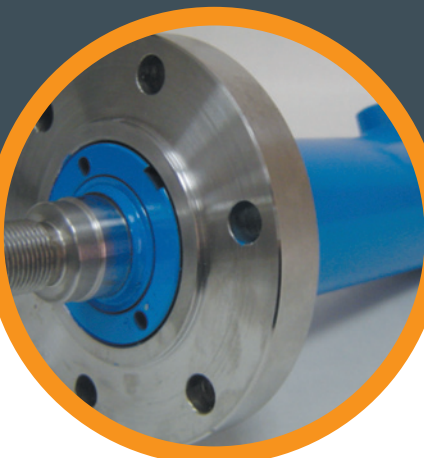


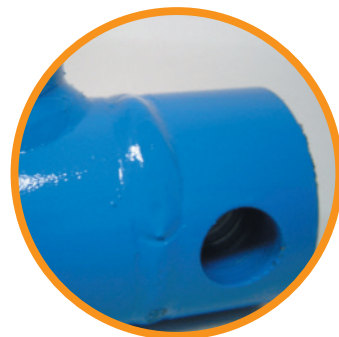
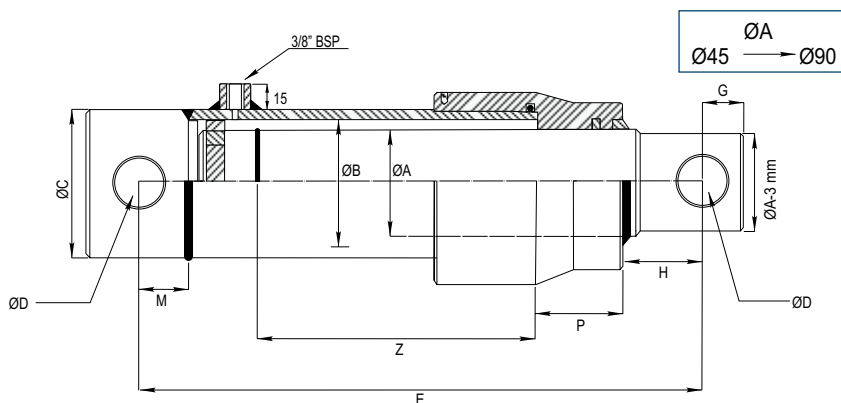
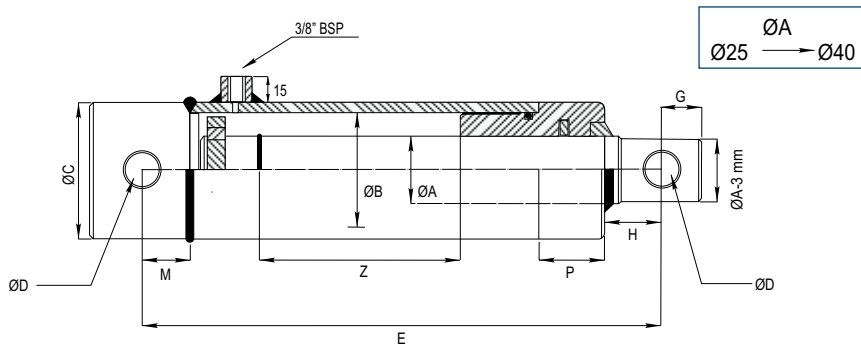
MANUFACTURING OF HYDRAULIC CYLINDERS

SERIES 100 - SINGLE ACTING HYDRAULIC CYLINDER.....	374	SERIES 640 - HYDRAULIC TOP LINK (ADJUSTABLE BALL JOINT)	388
SERIES 200 - DOUBLE ACTING HYDRAULIC CYLINDER	376	SERIES 650 - HYDRAULIC LEVELLING ARM.....	389
SERIES 300 - DOUBLE ACTING HYDRAULIC CYLINDER (NO ENDS) ..	378	SERIES 700 - BRAKE CYLINDER (SINGLE ACTING)	390
SERIES 400 - DOUBLE ACTING HYDRAULIC CYLINDER	380	SERIES 710 - BRAKE CYLINDER (SINGLE ACTING)	390
SERIES 500 - DOUBLE ACTING HYDRAULIC CYLINDER (FRONT FLANGE) ..	382	SERIES 800 - HYDRAULIC CRUTCH (SINGLE ACTING)	391
SERIES 590 - TURN-OVER PLOUGH CYLINDER	383	ATTACHMENTS	392
SERIES 600 - STANDARD HYDRAULIC TOP LINK	384	COMPONENTS	402
SERIES 610 - HYDRAULIC TOP LINK (FIXED)	385	HYDRAULIC VALVES	411
SERIES 620 - HYDRAULIC TOP LINK (RAPID HOOK)	386	OIL SEALS KITS	412
SERIES 630 - HYDRAULIC TOP LINK (RAPID HOOK)	387		



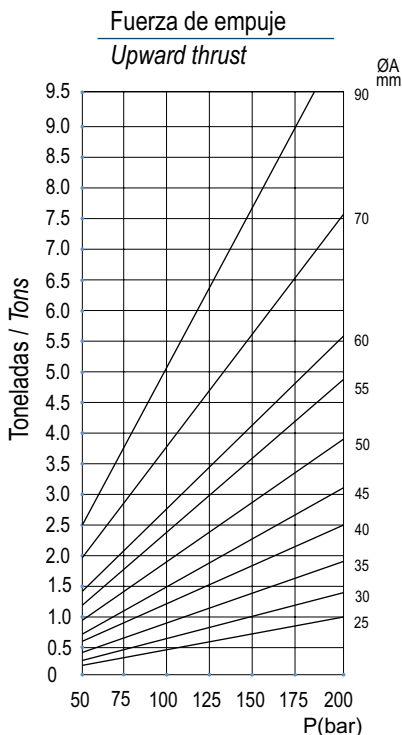
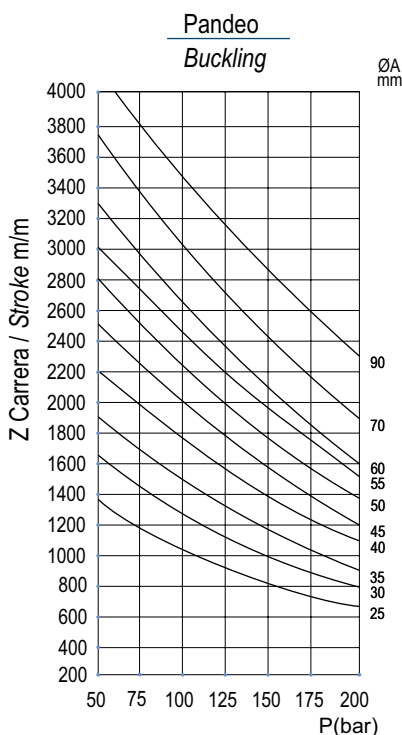
FLOWFIT

SERIES 100 - SINGLE ACTING HYDRAULIC CYLINDER FLOWFIT



Presión de trabajo: 180 bars.
 Velocidad: 0.5 m/s.
 Temperatura de trabajo: -25°C - +80°C
 Aceite: Aceite mineral
 Vástago: C45 f7 25 micras.
 Tubo: St52.3 Din2393 Iso H9

Working pressure: 180 bars.
 Speed: 0.5 m/s.
 Working temperature: -25°C - +80°C.
 Oil: Mineral oil.
 Rod: C45 f7 25 microns.
 Tube: St52.3 Din2393 Iso H9



1 bar= 14.21 psi

Cálculo de la fuerza de empuje

$$\text{Empuje} = \pi \times r^2 \times \text{presión}(\text{bar})$$

Ejemplo = Cilindro 40-50/60

$$3.14 \times 2.5^2 \times 150(\text{bar})$$

$$\text{Total} = 2.943,75 \text{ Kgs.}$$

Cálculo del volumen de un cilindro

$$\text{Volumen} = \pi \times r^2 \times h(\text{altura})$$

Ejemplo = Cilindro 40-50/60-2000(mm.)

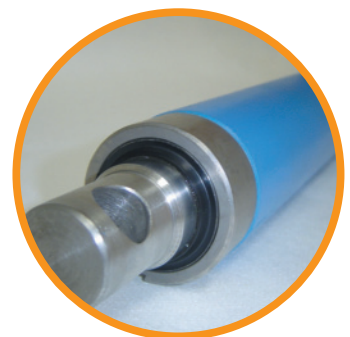
$$3.14 \times 2.5^2 \times 0,2$$

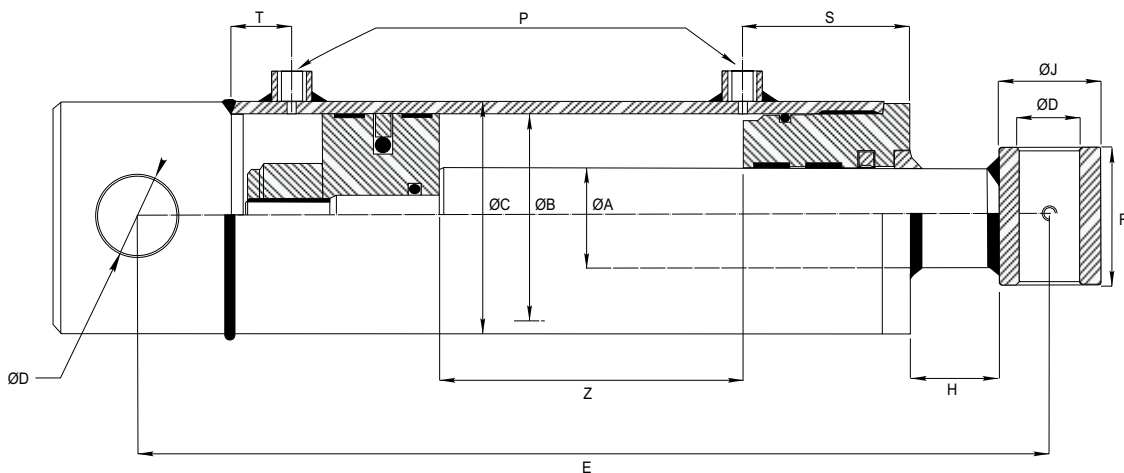
$$\text{Total} = 3,925 \text{ lts.}$$

SERIES 100 - SINGLE ACTING HYDRAULIC CYLINDER **FLOWFIT**

Order Code	ØA	B	Z Carrera Stroke	E	G	D	C	H	M	P	Vd. (litros) (liters)	Peso Weight Kgs.	Price
100/010	25	32	100	190	14	14.25	40	20	17	20	0.08	1.50	£110.12
100/020			200	290							0.16	2.30	£122.15
100/030			300	390							0.24	3.00	£133.98
101/020	30	40	200	300	15	16.25	50	22	22	22	0.25	3.60	£145.53
101/030			300	400							0.38	4.70	£160.90
101/040			400	500							0.50	6.00	£178.59
101/050			500	600							0.69	7.60	££194.08
101/070			700	800							0.88	9.40	£233.58
102/020	35	45	200	330	17	20.50	55	24	25	24	0.32	4.70	£154.55
102/030			300	430							0.48	6.10	£171.31
102/040			400	530							0.64	7.50	£188.10
102/050			500	630							0.87	9.60	£204.74
102/070			700	830							1.11	11.70	£238.14
103/020	40	50	200	330	17	20.50	60	32	25	32	0.39	6.00	£196.65
103/030			300	430							0.59	7.60	£218.84
103/040			400	530							0.79	9.30	£241.12
103/050			500	630							1.08	11.70	£263.28
103/070			700	830							1.37	14.20	£307.70
104/020	45	50	200	330	23	25.50	60	35	25	35	0.39	7.00	£248.62
104/030			300	430							0.59	8.90	£272.90
104/040			400	530							0.79	10.90	£297.16
104/050			500	630							1.08	13.70	£321.59
104/070			700	830							1.37	16.70	£370.14
105/020	50	55	200	360	23	25.50	65	35	25	44	0.48	8.90	£260.18
105/030			300	460							0.71	11.20	£288.18
105/040			400	560							0.95	13.50	£316.19
105/050			500	660							1.31	16.80	£344.17
105/070			700	860							1.66	20.40	£400.17
106/030	55	60	300	460	23	25.50	70	35	25	52	0.85	13.60	£415.94
106/050			500	660							1.56	19.30	£489.30
106/070			700	860							1.98	24.20	£562.66
107/020	60	65	200	360	25	30.50	75	40	29	67	0.66	12.60	£379.36
107/030			300	460							1.00	15.70	£416.01
107/040			400	560							1.33	18.70	£452.72
107/050			500	660							1.83	23.30	£489.37
107/070			700	860							2.32	28.40	£562.70
108/030	70	80	300	480	25	30.50	90	40	29	67	1.51	25.10	£467.41
108/040			400	580							2.02	29.60	£517.82
108/050			500	680							2.52	34.50	£564.32
108/070			700	880							3.53	43.40	£661.27
109/030	90		300	480	25	30.50	115	40	29	67	2.37	36.50	£POA
109/050			500	680							3.94	41.50	£POA
109/070			700	880							5.52	48.50	£POA

* Unidades en milímetros.
Units in millimeters.





Presión de trabajo: 180 bars.
 Velocidad: 0.5 m/s.
 Temperatura de trabajo: -25°C - +80°C
 Aceite: Aceite mineral
 Vástago: C45 f7 25 micras.
 Tubo: St52.3 Din2393 Iso H9

Working pressure: 180 bars.
 Speed: 0.5 m/s.
 Working temperature: -25°C - +80°C.
 Oil: Mineral oil.
 Rod: C45 f7 25 microns.
 Tube: St52.3 Din2393 Iso H9

Cálculo del volumen de un cilindro

Volumen = $\pi \times r^2 \times h$ (altura)
 Ejemplo = Cilindro 40-70/80-400(mm.)
 $3.14 \times 3.5^2 \times 0.04$ (mts.)
 Total = 1,5386 lts.

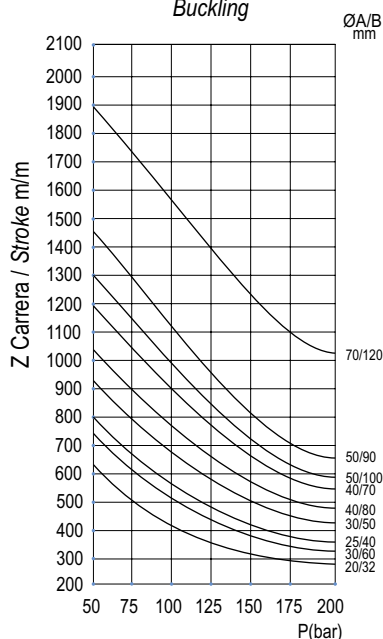
Cálculo de la fuerza de empuje

Empuje = $\pi \times r^2 \times presión$ (bar)
 Ejemplo = Cilindro 40-70/80
 $3.14 \times 3.5^2 \times 150$ (bar)
 Total = 5.769,75 Kgs.

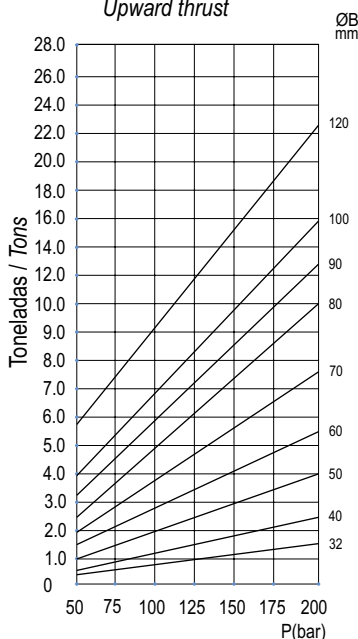
Cálculo de la fuerza de tracción

Empuje = $\pi \times r^2 \times presión$ (bar)
 Ejemplo = Cilindro 40-70/80
 Calcular área vástago: $3.14 \times 2.0^2 = 12.56$
 Calcular área tubo: $3.14 \times 3.5^2 = 38.465$
 Restar áreas: $38.465 - 12.56 = 25.905$
 Fuerza: 25.905×150 (bar) = 3.885,79 Kgs.

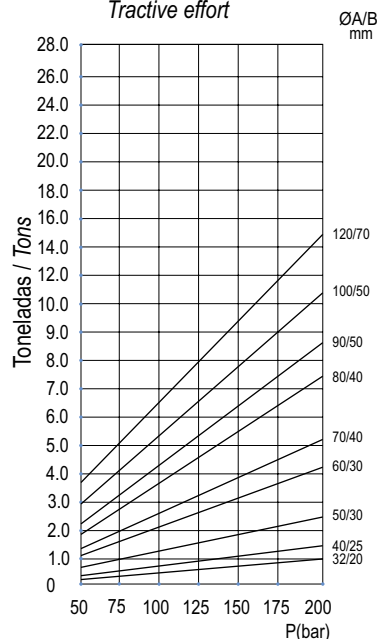
Pandeo Buckling



Fuerza de empuje Upward thrust



Fuerza de tracción Tractive effort



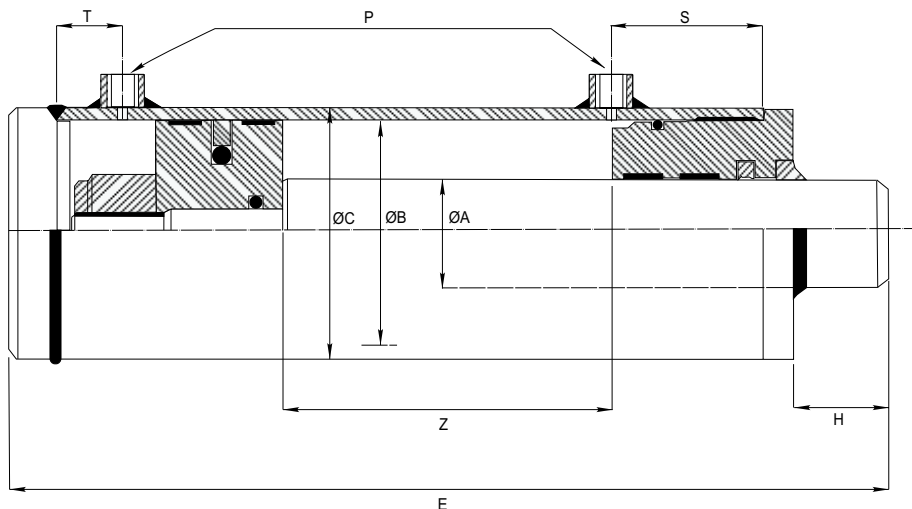
1 bar = 14.21 psi

SERIES 200 - DOUBLE ACTING HYDRAULIC CYLINDER **FLOWFIT**

Order Code	ØA	Z Carrera Stroke	E	B	C	D	H	T	J	R	S	P	Volume Litres	Weight Kgs	Price	
200/010	20	100	255	32	40	16.25	46	10	30	35	33	1/4"	0.10	2.00	£83.38	
200/020		200	355										0.17	2.60	£90.87	
200/030		300	455										0.25	3.20	£95.64	
201/020	25	200	370	40	50	20.50	30	16	35	40	42	3/8"	0.25	3.80	£98.59	
201/030		300	470										0.40	4.80	£106.20	
201/040		400	570										0.55	5.80	£113.82	
201/050		500	670										0.60	6.80	£121.47	
201/060		600	770										0.75	7.80	£129.04	
201/070		700	870										0.90	8.80	£136.69	
202/020	30	200	400	50	60	25.50	47	20	40	45	43	3/8"	0.39	5.84	£121.21	
202/030		300	500										0.59	7.06	£130.85	
202/040		400	600										0.79	8.28	£140.46	
202/050		500	700										0.98	9.50	£150.09	
202/060		600	800										1.18	10.72	£159.74	
202/070		700	900	1.37	11.94	£169.34										
203/020		30	200	400	60	70	25.50	46	20	40	45	47	3/8"	0.57	7.08	£138.20
203/030			300	500										0.85	8.46	£148.35
203/040			400	600										1.13	9.84	£158.52
203/050			500	700										1.41	11.22	£168.68
203/060	600		800	1.70										12.60	£178.81	
203/070	700		900	1.98										13.98	£188.92	
204/020	40	200	410	70	80	30.50	34	26	50	55	51	3/8"	0.77	10.39	£175.09	
204/030		300	510										1.15	12.22	£189.67	
204/040		400	610										1.54	14.05	£204.28	
204/050		500	710										1.92	15.88	£218.90	
204/060		600	810										2.31	17.71	£233.48	
204/070		700	910	2.69	19.54	£248.05										
205/020		40	200	410	80	90	30.50	21	26	50	55	56	3/8"	1.01	12.10	£216.56
205/030			300	510										1.51	14.10	£233.60
205/040			400	610										2.01	16.10	£250.68
205/050			500	710										2.51	18.10	£270.87
205/060	600		810	3.02										20.10	£284.72	
205/070	700		910	3.52										22.10	£301.74	
206/020	50	200	425	90	100	30.50	28	26	60	70	60	3/8"	1.27	15.15	£262.13	
206/030		300	525										1.91	18.15	£295.23	
206/040		400	625										2.54	21.15	£324.76	
206/050		500	725										3.17	24.15	£360.32	
206/060		600	825										3.80	27.15	£394.34	
206/070		700	925	4.43	30.15	£427.35										
207/030		50	300	525	100	115	30.50	25	26	60	70	67	1/2"	2.36	27.60	£336.53
207/040			400	625										3.14	30.80	£363.99
207/050			500	725										3.94	34.00	£391.34
207/060			600	825										4.74	37.20	£422.44
207/070	700		925	5.54										40.40	£446.20	
208/040	70		400	710										120	140	40.50
208/050		500	810	5.65	62.50	£POA										
208/060		600	910	7.07	70.00	£POA										
208/070		700	1010	8.49	77.50	£POA										

* Unidades en milímetros.
Units in millimeters.





Presión de trabajo: 180 bars.
 Velocidad: 0.5 m/s.
 Temperatura de trabajo: -25°C - +80°C
 Aceite: Aceite mineral
 Vástago: C45 f7 25 micras.
 Tubo: St52.3 Din2393 Iso H9

Working pressure: 180 bars.
 Speed: 0.5 m/s.
 Working temperature: -25°C - +80°C.
 Oil: Mineral oil.
 Rod: C45 f7 25 microns.
 Tube: St52.3 Din2393 Iso H9

Cálculo del volumen de un cilindro

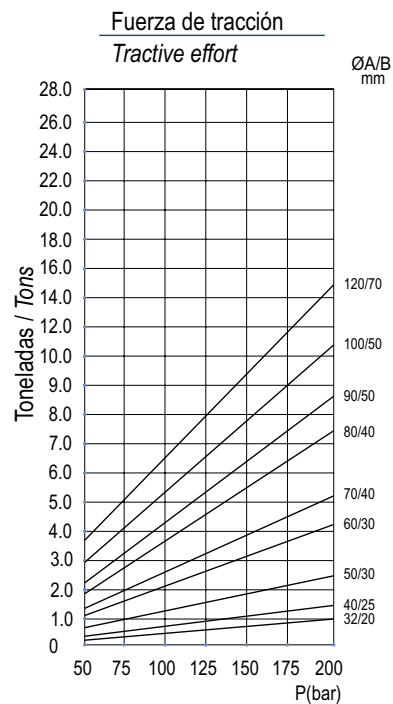
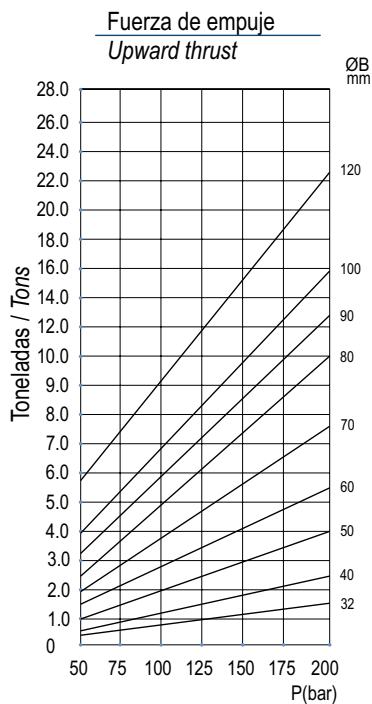
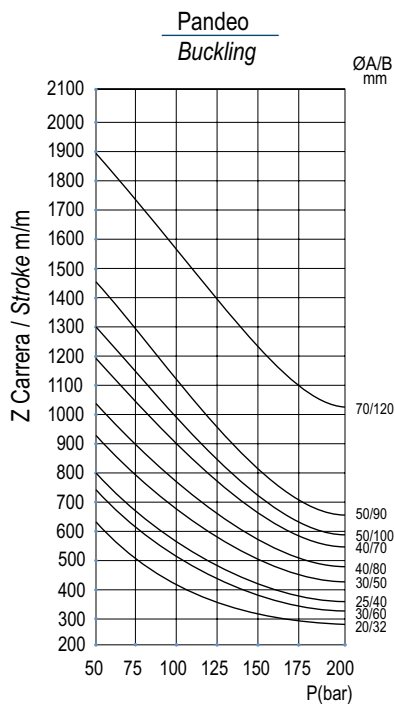
Volumen = $\pi \times r^2 \times h$ (altura)
 Ejemplo = Cilindro 40-70/80-400(mm.)
 $3.14 \times 3.5^2 \times 0.04$ (mts.)
 Total = 1,5386 lts.

Cálculo de la fuerza de empuje

Empuje = $\pi \times r^2 \times \text{presión}(\text{bar})$
 Ejemplo = Cilindro 40-70/80
 $3.14 \times 3.5^2 \times 150$ (bar)
 Total = 5.769,75 Kgs.

Cálculo de la fuerza de tracción

Empuje = $\pi \times r^2 \times \text{presión}(\text{bar})$
 Ejemplo = Cilindro 40-70/80
 Calcular área vástago: $3.14 \times 2.0^2 = 12,56$
 Calcular área tubo: $3.14 \times 3.5^2 = 38,465$
 Restar áreas: $38,465 - 12,56 = 25,905$
 Fuerza: $25,905 \times 150$ (bar) = 3.885,79 Kgs.



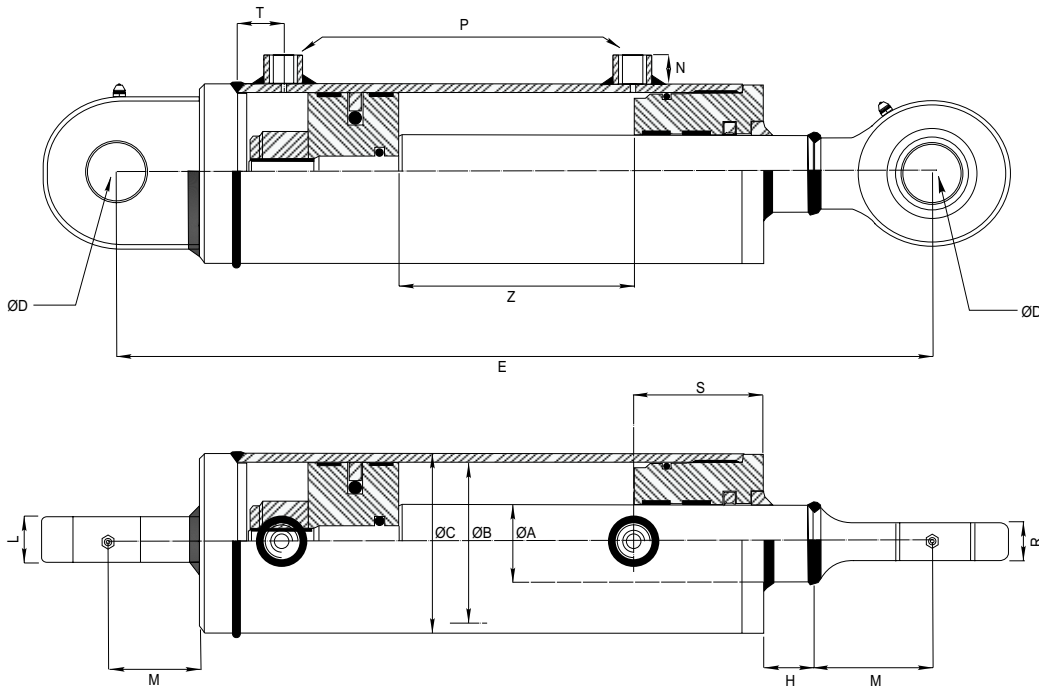
SERIES 300 - DOUBLE ACTING HYDRAULIC CYLINDER (NO ENDS)

Order Code	ØA	Z Carrera Stroke	E	B	C	H	T	S	P	Vol (litros) (liters)	Peso Weight Kgs.	Price		
300/010	20	100	233	32	40	46	10	33	1/4"	0.10	1.90	£61.13		
300/020		200	333							0.16	2.50	£66.88		
300/030		300	433							0.24	3.10	£72.59		
301/020	25	200	345	40	50	30	16	42	3/8"	0.25	3.50	£78.93		
301/030		300	445							0.38	4.50	£86.55		
301/040		400	545							0.50	5.50	£94.17		
301/050		500	645							0.69	6.50	£105.07		
301/060		600	745							0.76	7.50	£112.85		
301/070		700	845							0.88	8.50	£153.58		
302/020	30	200	370	50	60	47	20	43	3/8"	0.39	4.90	£94.69		
302/030		300	470							0.59	6.20	£107.73		
302/040		400	570							0.79	7.50	£113.88		
302/050		500	670							0.98	8.80	£128.22		
302/060		600	770							1.18	10.10	£138.52		
302/070		700	870	1.37	11.40	£155.69								
303/020		30	200	371	60	70		46	20	47	3/8"	0.57	6.20	£109.20
303/030			300	471								0.85	7.50	£119.37
303/040			400	571								1.13	8.90	£129.52
303/050			500	671								1.41	10.30	£139.70
303/060	600		771	1.70			11.60					£149.85		
303/070	700		871	1.98			13.00					£168.29		
304/020	40		200	371			70					80	34	26
304/030		300	471	1.15	10.60	£154.58								
304/040		400	571	1.54	12.60	£169.20								
304/050		500	671	1.92	14.50	£183.84								
304/060		600	771	2.31	16.40	£198.40								
304/070		700	871	2.69	18.30	£226.06								
305/020		40	200	371	80	90		21	26	56	3/8"			
305/030			300	471			1.51					13.80	£190.37	
305/040			400	571			2.01					16.10	£208.47	
305/050			500	671			2.51					18.40	£226.45	
305/060			600	771			3.02					20.60	£244.52	
305/070			700	871			3.52					22.90	£277.84	
306/020		50	200	382	90	100	28	26	60	3/8"	1.27	14.10	£219.05	
306/030			300	482							1.91	17.05	£251.44	
306/040	400		582	2.54							20.10	£282.87		
306/050	500		682	3.17							23.15	£314.81		
306/060	600		782	3.80							26.20	£346.73		
306/070	700		882	4.43	29.35	£378.66								
307/030	50		300	487	100	115	25		26	67	1/2"	2.36	23.90	£328.03
307/040			400	587								3.14	27.40	£362.59
307/050			500	687								3.94	30.90	£404.56
307/060			600	787								4.74	34.50	£452.17
307/070		700	887	5.54				38.00				£488.82		
308/040		70	400	655				120				140	39	30
308/050	500		755	5.65	57.25	£POA								
308/060	600		855	7.07	64.50	£POA								
308/070	700		955	8.49	71.80	£POA								

* Unidades en milímetros.
Units in millimeters.



SERIES 400 - DOUBLE ACTING HYDRAULIC CYLINDER FLOWFIT

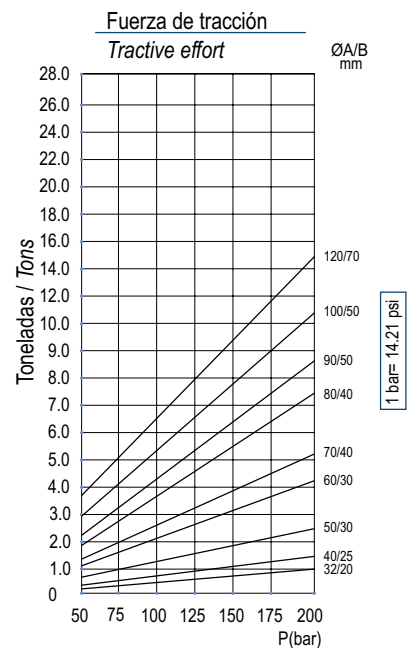
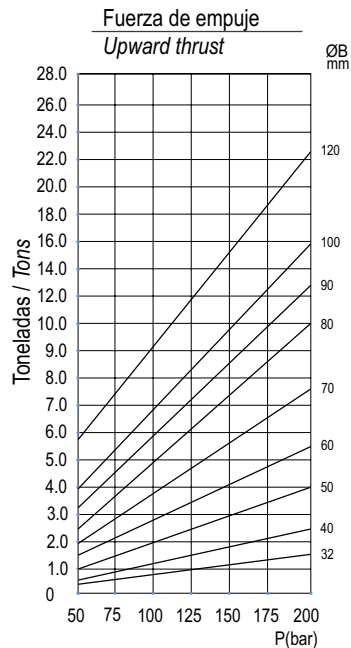
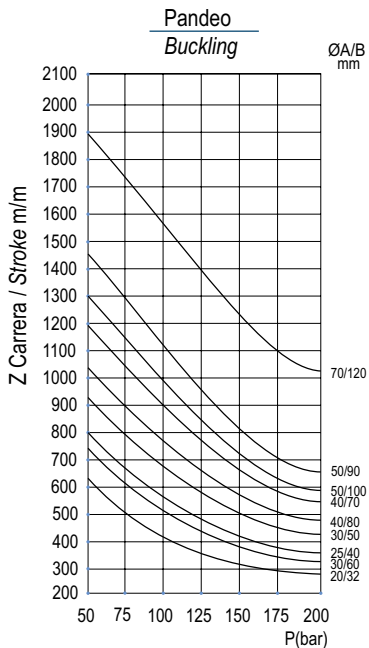


Presión de trabajo: 180 bars.
 Velocidad: 0.5 m/s.
 Temperatura de trabajo: -25°C - +80°C
 Aceite: Aceite mineral
 Vástago: C45 f7 25 micras.
 Tubo: St52.3 Din2393 Iso H9

Working pressure: 180 bars.
 Speed: 0.5 m/s.
 Working temperature: -25°C - +80°C.
 Oil: Mineral oil.
 Rod: C45 f7 25 microns.
 Tube: St52.3 Din2393 Iso H9

Opción: Kit válvula antirretorno doble pilotada (VADP008EX).
 Rótulas Serie TAC y TPN soldadas.

Option: Dual pilot operated check valve set. (VADP008EX).
 TAC and TPN series welded ball joints.



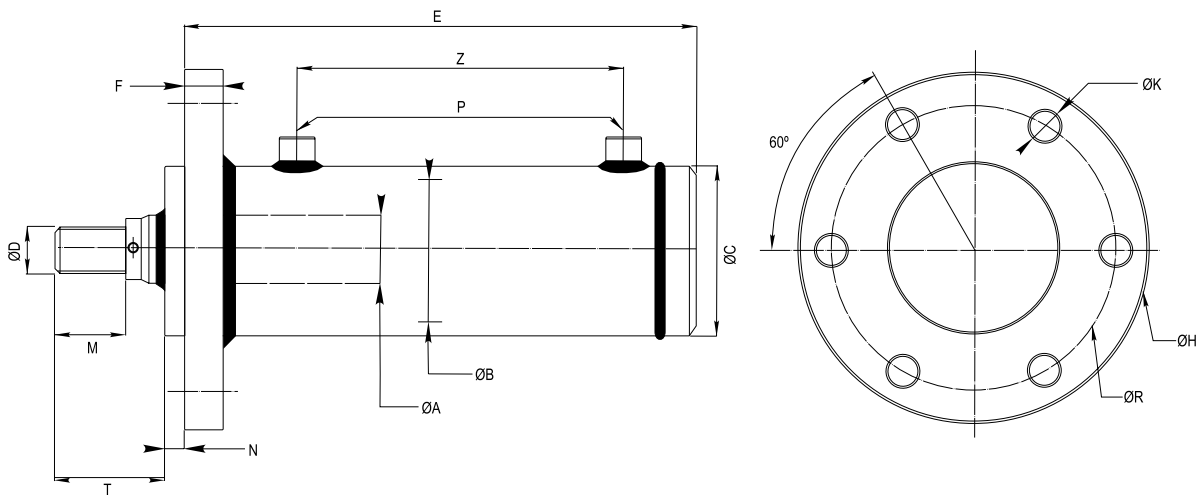
SERIES 400 - DOUBLE ACTING HYDRAULIC CYLINDER

Order Code	ØA	Z Carrera Stroke	E	B	C	D	H	T	N	L	S	M	R	P	Vdt (litros) (liters)	Peso Weight Kgs.	Price
400/010	20	100	280	32	40	20.00 ^{+0.02} _{-0.00}	14	10	16	19	33	38	16	1/4"	0.10	2.50	£106.15
400/020		200	380												0.16	3.10	£118.29
400/030		300	480												0.24	3.70	£130.38
401/020	25	200	410	40	50	20.00 ^{+0.02} _{-0.00}	19	16	16	19	42	38	16	3/8"	0.25	4.10	£154.30
401/030		300	510												0.38	5.10	£172.99
401/040		400	610												0.50	6.10	£196.97
401/050		500	710												0.69	7.10	£210.38
401/060		600	810												0.76	8.10	£229.08
401/070		700	910												0.88	9.10	£252.52
402/020	30	200	430	50	60	25.00 ^{+0.02} _{-0.00}	17	20	16	23	45	20	3/8"	0.39	5.90	£163.17	
402/030		300	530											0.59	7.20	£182.91	
402/040		400	630											0.79	8.50	£202.04	
402/050		500	730											0.98	9.80	£229.53	
402/060		600	830											1.18	11.10	£240.25	
402/070		700	930	1.37	12.40	£259.36											
403/020		30	200	430	60	70	25.00 ^{+0.02} _{-0.00}	15	20	16	23	45	20	3/8"	0.57	7.20	£179.25
403/030			300	530											0.85	8.50	£200.19
403/040			400	630											1.13	9.80	£221.25
403/050			500	730											1.41	11.10	£242.02
403/060	600		830	1.70											12.40	£262.95	
403/070	700		930	1.98											13.70	£283.93	
404/020	40		200	465											70	80	30.00 ^{+0.02} _{-0.00}
404/030		300	565	1.15	12.15	£274.72											
404/040		400	665	1.54	14.05	£302.97											
404/050		500	765	1.92	15.95	£328.89											
404/060		600	865	2.31	17.85	£359.38											
404/070		700	965	2.69	19.75	£387.60											
405/020		40	200	465	80	90	30.00 ^{+0.02} _{-0.00}	13	26	16	28	56	22	3/8"	1.01	13.15	£309.97
405/030			300	565											1.51	15.35	£342.90
405/040			400	665											2.01	17.55	£376.02
405/050			500	765											2.51	19.75	£409.01
405/060	600		865	3.02											21.95	£442.03	
405/070	700		965	3.52											24.15	£475.05	
406/020	50		200	510											90	100	40.00 ^{+0.02} _{-0.00}
406/030		300	610	1.91	20.75	£459.66											
406/040		400	710	2.54	23.70	£494.95											
406/050		500	810	3.17	26.65	£507.15											
406/060		600	910	3.80	29.60	£571.99											
406/070		700	1010	4.43	32.55	£626.96											
407/030		50	300	615	100	115	40.00 ^{+0.02} _{-0.00}	15	20	16	35	69	28	1/2"	2.36	27.60	£603.07
407/040			400	715											3.14	31.10	£653.99
407/050			500	815											3.94	34.60	£667.14
407/060			600	915											4.74	38.10	£743.64
407/070	700		1015	5.54											41.60	£814.59	
408/040	70	400	770	120	140	50.00 ^{+0.02} _{-0.00}	17	30	40	67	88	35	1/2"	4.23	57.00	£912.24	
408/050		500	870											5.65	64.15	£979.42	
408/060		600	970											7.07	71.30	£1,178.80	
408/070		700	1070											8.49	78.45	£1,412.85	

* Unidades en milímetros.
Units in millimeters.



SERIES 500 - DOUBLE ACTING HYDRAULIC CYLINDER (FRONT FLANGE) **FLOWFIT**

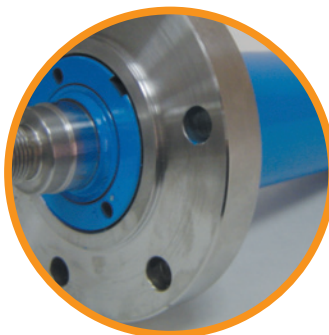


Opción: Para trabajos intensivos, es posible sustituir la estanqueidad, por juntas de baja fricción, y alta presión de trabajo.

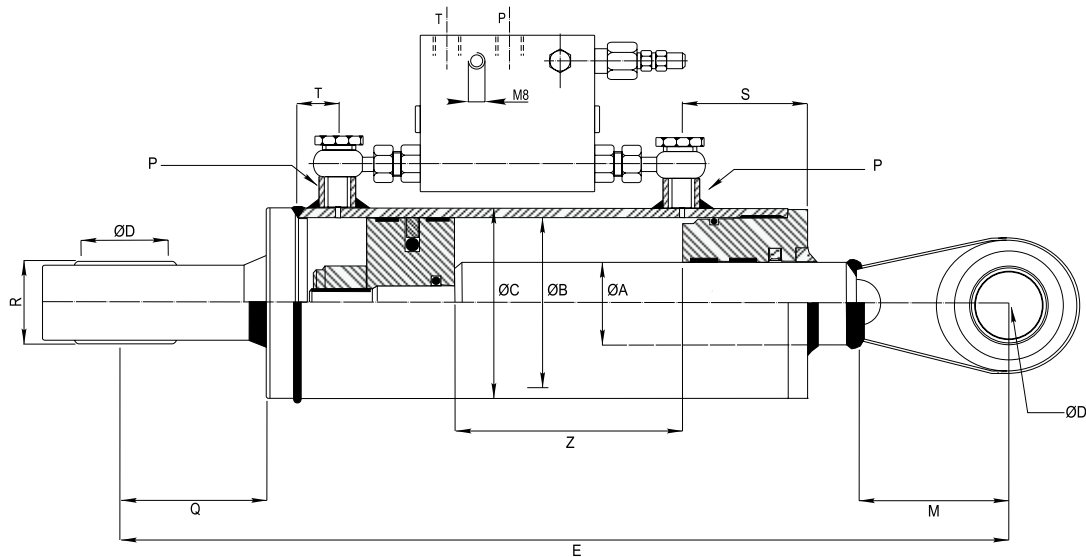
Option: For intensive work, leakage can be replaced by low friction joints and high pressure.

Order Code	ØA	Z Carrera Stroke	E	B	C	D	H	T	M	N	K	F	R	P	Price	
500/Z	20	50-2000	79+Z	32	40	M14X1.5	80	35	18	8	7	10	67	1/4"	£POA	
501/Z	20		108+Z	40	50	M16X1.5	100	40	22	7	9	12	82	3/8"	£POA	
502/Z	25		115+Z	50	60	M20X1.5	125	48	28	8	11	12	103	3/8"	£POA	
503/Z	25															
504/Z	30		117+Z	60	70	M27X2.0	145	58	36	8	13	12	120	3/8"	£POA	
505/Z	35															
506/Z	30		127+Z	70	80	M27X2.0	160	58	36	10	15	15	130	3/8"	£POA	
507/Z	35															
508/Z	40		140+Z	80	90	M33X2.0	170	68	45	10	15	15	142	3/8"	£POA	
509/Z	35															
510/Z	40		144+Z	90	100	M33X2.0	202	68	45	10	17	15	170	3/8"	£POA	
511/Z	45															
512/Z	50		147+Z	100	115	M42X2.0	202	85	56	15	17	15	170	1/2"	£POA	
513/Z	35															
514/Z	40		201+Z	120	140	M48X2.0	250	92	63	15	21	30	210	1/2"	£POA	
515/Z	45															
516/Z	50		201+Z	130	150	M64X2.0	280	120	85	15	21	30	230	3/4"	£POA	
517/Z	40															
518/Z	45															
519/Z	50															
520/Z	50															
521/Z	60															
522/Z	70															
523/Z	60															
524/Z	70															
525/Z	80															
526/Z	70															
527/Z	80															
528/Z	90															

* Unidades en milímetros.
Units in millimeters.



SERIES 590 - TURN-OVER PLOUGH CYLINDER FLOWFIT



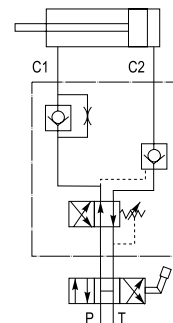
Esquema hidráulico válvula
Hydraulic valve diagram

Funcionamiento: Pueden ser montados en circuitos tanto de simple como de doble efecto. Están provistas de rótulas TAC y TPN para un montaje más sencillo.

Operation: Can be mounted on a circuit of single and double acting. It is equipped with TAC and TPN ball joints for easier mounting.

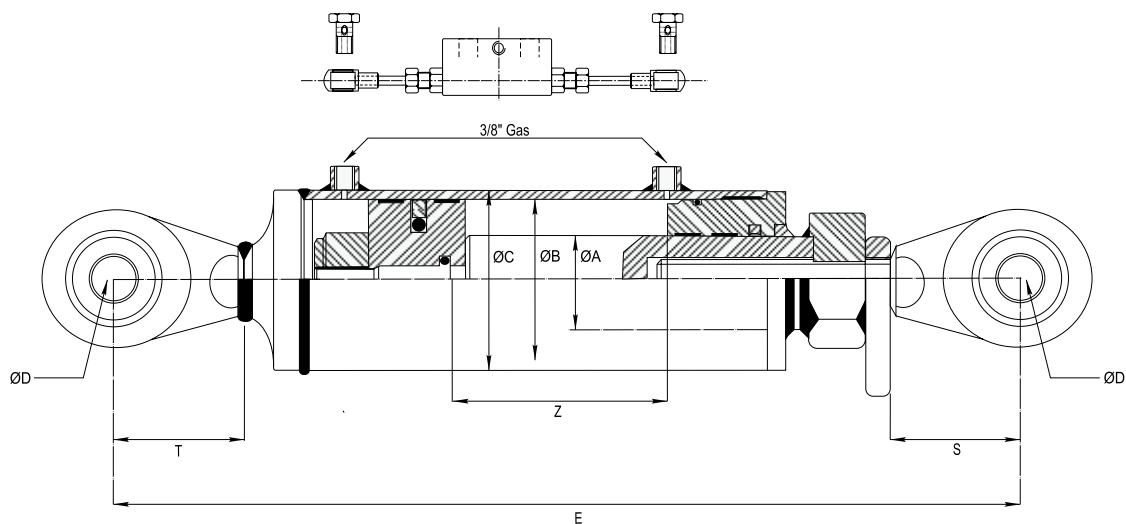
Referencia válvula volteo arado : VSEB03802. (Montaje en tubo Din2353).

Reference of the turn-over plough valve: VSEB03802. (Mounting in pipe Din2353).



Order Code	ØA	Z Carrera Stroke	E	B	C	D	Q	M	S	R	P	T	Vol (litros) (liters)	Peso Weight Kgs.	Price
591/016	30	160	400	50	60	30.2	51	51	43	28	3/8"	20	0.30	8.50	£740.42
592/016	40			70	80		51	51	51	28	3/8"	26	0.60	11.80	£793.54
593/016	40			80	90		56	0.85	13.20	£805.91					

* Unidades en milímetros.
Units in millimeters.



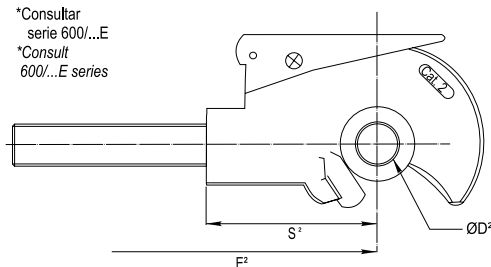
Opción 1ª: Kit válvula antirretorno doble pilotada (VADP008EX). Longitud entre centros ajustable.

Opción 2ª: Posibilidad de cambiar la rótula agrícola estándar del vástago por enganche rápido. (Cat.2).

Option 1st: Dual pilot operated check valve set. (VADP008EX). Adjustable length between centers.

Option 2nd: Ability to change the standard ball joint for rapid hook in the rod. (Cat.2).

*Consultar serie 600/...E
*Consult 600/...E series

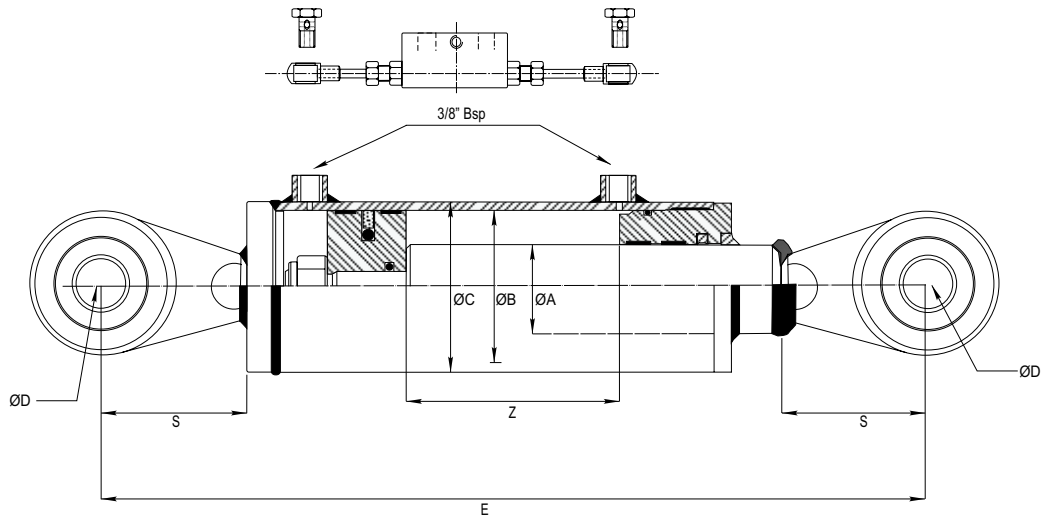


Presión de trabajo: 180 bars.
Velocidad: 0.5 m/s.
Temperatura de trabajo: -25°C - +80°C
Aceite: Aceite mineral
Vástago: C45 f7 25 micras.
Tubo: St52.3 Din2393 Iso H9

Working pressure: 180 bars.
Speed: 0.5 m/s.
Working temperature: -25°C - +80°C.
Oil: Mineral oil.
Rod: C45 f7 25 microns.
Tube: St52.3 Din2393 Iso H9

Order Code	ØA	Z Carrera Stroke	E	E²	B	C	D	D²	S	S²	T	Vd (litros) (liters)	Peso Weight Kgs.	Price
600/020	40	200	510		60	70	25.40			55	65	0.60	11.50	£236.13
600/025		250	560									0.75	12.50	£249.74
600/030		300	610									0.90	13.50	£263.35
601/020	45	200	530		70	80				105	70	0.80	14.00	£269.32
601/025		250	580									1.05	15.00	£289.91
601/030		300	630									1.25	16.00	£320.97
600/020E	40	200		560	60	70		19.30			65	0.60	13.50	£341.62
600/025E		610		22.40				0.75				14.50	£352.26	
600/030E		660		25.40				0.90				15.50	£373.90	
601/020E	45	200		580	70	80		30.40			70	0.80	16.00	£382.38
601/025E		630		28.40				1.05				17.00	£420.76	
601/030E		680		32.40				1.25				18.00	£451.75	

* Unidades en milímetros.
Units in millimeters.



Presión de trabajo: 180 bars.
 Velocidad: 0.5 m/s.
 Temperatura de trabajo: -25°C - +80°C
 Aceite: Aceite mineral
 Vástago: C45 f7 25 micras.
 Tubo: St52.3 Din2393 Iso H9

Working pressure: 180 bars.
 Speed: 0.5 m/s.
 Working temperature: -25°C - +80°C.
 Oil: Mineral oil.
 Rod: C45 f7 25 microns.
 Tube: St52.3 Din2393 Iso H9

Opción : Kit válvula antirretorno doble pilotada (VADP008EX).
 Rótulas soldadas.

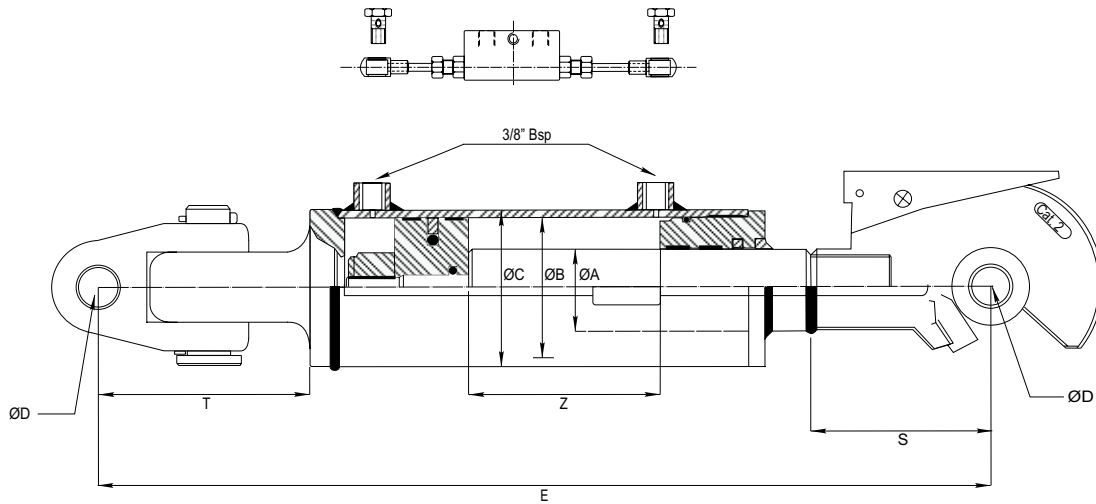
Option : Dual pilot operated check valve set. (VADP008EX).
 Ball joints welded.

Order Code	ØA	Z Carrera Stroke	E	B	C	ØD	S	Vol. (litros) (liters)	Peso Weight Kgs.	Price			
610/016	30	160	416	50	60	19.30	60	0.32	5.60	£160.52			
610/021		210	466			19.30		0.42	6.20	£170.47			
610/028		280	536			19.30		0.56	7.10	£185.16			
610/040		400	656			19.30		0.80	8.50	£215.47			
610/016A		160	426			60	70	25.40	65	0.32	6.30	£160.52	
610/021A		210	476					25.40		0.42	6.90	£170.47	
610/028A		280	546					25.40		0.56	7.90	£185.16	
610/040A		400	666					25.40		0.80	9.20	£215.47	
611/016	35	160	440	60	70			25.40		70	0.48	7.80	£181.27
611/021		210	490					25.40			0.63	8.60	£193.88
611/028		280	560					25.40			0.84	9.60	£211.64
611/040		400	680					25.40			1.20	15.60	£242.02
612/016	40	160	461	80	90	25.40	70	0.90	12.50	£237.71			
612/021		210	511			25.40		1.20	13.70	£254.14			
612/028		280	581			25.40		1.60	15.20	£280.36			
612/040		400	701			25.40		2.20	18.00	£293.06			

* Unidades en milímetros.
 Units in millimeters.



SERIES 620 - HYDRAULIC TOP LINK (RAPID HOOK)



Presión de trabajo: 180 bars.
 Velocidad: 0.5 m/s.
 Temperatura de trabajo: -25°C - +80°C
 Aceite: Aceite mineral
 Vástago: C45 f7 25 micras.
 Tubo: St52.3 Din2393 Iso H9

Working pressure: 180 bars.
 Speed: 0.5 m/s.
 Working temperature: -25°C - +80°C.
 Oil: Mineral oil.
 Rod: C45 f7 25 microns.
 Tube: St52.3 Din2393 Iso H9

Opción : Kit válvula antirretorno doble pilotada (VADP008EX).
 Rótulas soldadas.

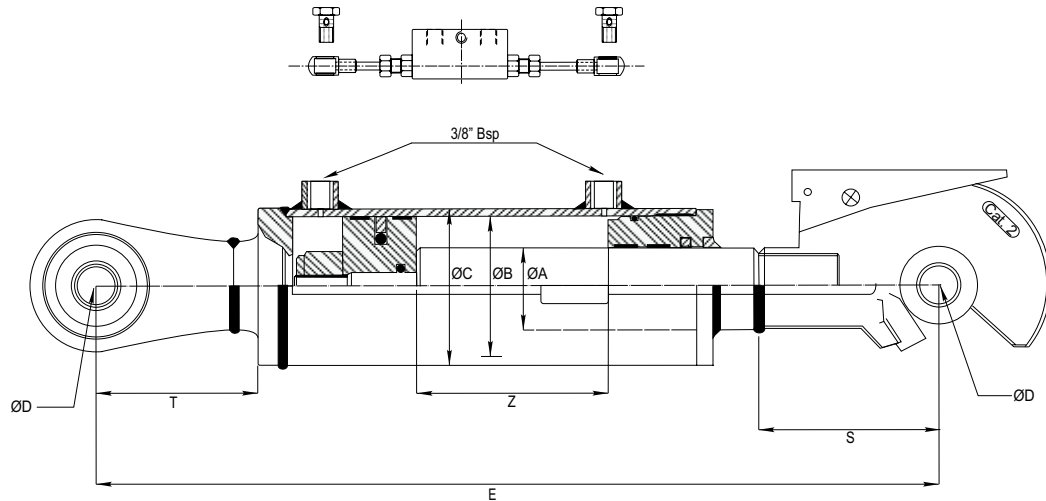
Option : Dual pilot operated check valve set. (VADP008EX).
 Ball joints welded.

Order Code	ØA	Z Carrera Stroke	E	B	C	ØD	S	Categoría Range	T	Vol. (Litros) (Liters)	Peso Weight Kgs.	Price
620/020	35	200	550	60	70	19.40	105	Cat.2	95	0.55	12.50	£350.66
620/025		250	600							0.70	13.50	£366.36
621/020		200	550	70	80					0.95	14.00	£393.28
621/025		250	600							1.15	15.50	£383.62
622/020	40	200	600	80	95	25.40	132	Cat.3		1.10	18.00	£513.86
622/025		250	650							1.35	20.00	£523.46
623/020		200	600	90	105					1.30	19.50	£538.43
623/025		250	650							1.65	22.00	£551.93
624/020	45	200	600	100	115	32.40			1.55	22.50	£590.85	
624/025		250	650						1.90	25.50	£615.33	

* Unidades en milímetros.
 Units in millimeters.



SERIES 630 - HYDRAULIC TOP LINK (RAPID HOOK) FLOWFIT



Presión de trabajo: 180 bars.
 Velocidad: 0.5 m/s.
 Temperatura de trabajo: -25°C - +80°C
 Aceite: Aceite mineral
 Vástago: C45 f7 25 micras.
 Tubo: St52.3 Din2393 Iso H9

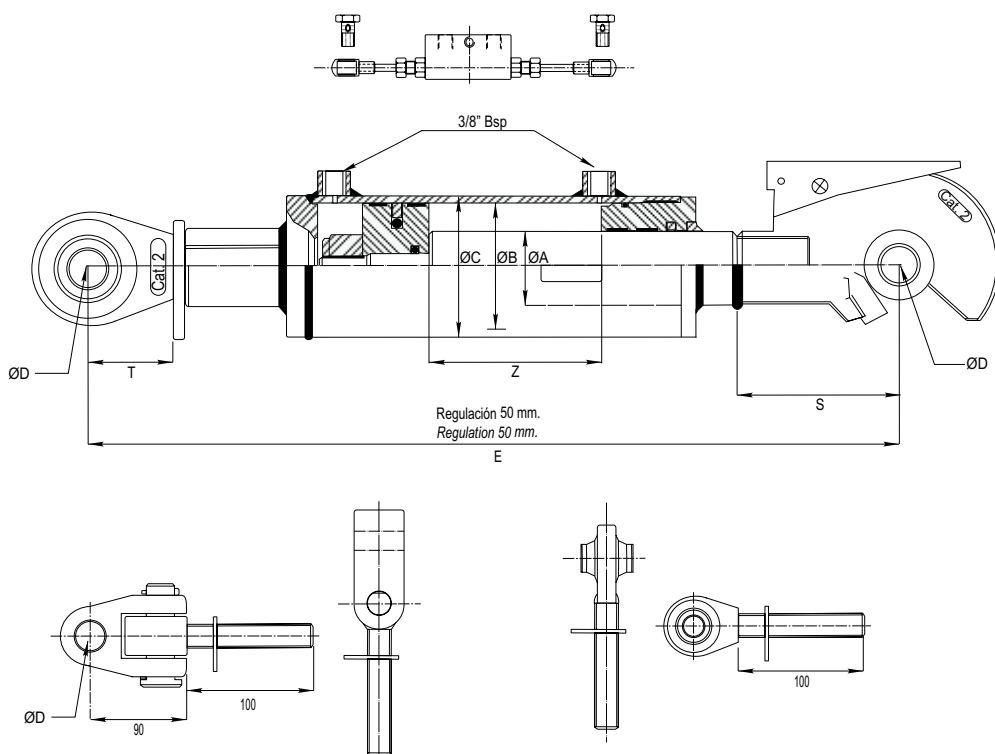
Working pressure: 180 bars.
 Speed: 0.5 m/s.
 Working temperature: -25°C - +80°C.
 Oil: Mineral oil.
 Rod: C45 f7 25 microns.
 Tube: St52.3 Din2393 Iso H9

Opción : Kit válvula antirretorno doble pilotada (VADP008EX).
 Rótulas y engache rápido soldados.

Option : Dual pilot operated check valve set. (VADP008EX).
 Ball joints and rapid hook welded.

Order Code	ØA	Z Carrera Stroke	E	B	C	D	S	Categoría Range	T	Vd. (Litros) (Liters)	Peso Weight Kgs.	Price
630/020	35	200	550	60	70	19.40	105	Cat.2	95	1.00	10.00	£321.60
630/025		250	600							1.00	10.00	£333.40
631/020		200	550	70	80	20.40				1.00	10.00	£339.96
631/025		250	600							1.00	10.00	£354.23
632/020	40	200	600	80	95	25.40	132	Cat.3		1.00	10.00	£467.85
632/025		250	650							28.40	1.00	10.00
633/020		200	600	90	105	30.40				1.00	10.00	£492.17
633/025		250	650							1.00	10.00	£511.68
634/020	45	200	600	100	115	32.40			1.00	10.01	£543.22	
634/025		250	650						1.00	10.01	£567.53	

* Unidades en milímetros.
 * Units in millimeters.



Opción 1ª : Cruceta articulada.
Option 1st : Articulated yoke.

Opción 2ª : Rótula articulada.
Option 2nd : Ball joint.

Presión de trabajo: 180 bars.
Velocidad: 0.5 m/s.
Temperatura de trabajo: -25°C - +80°C
Aceite: Aceite mineral
Vástago: C45 f7 25 micras.
Tubo: St52.3 Din2393 Iso H9

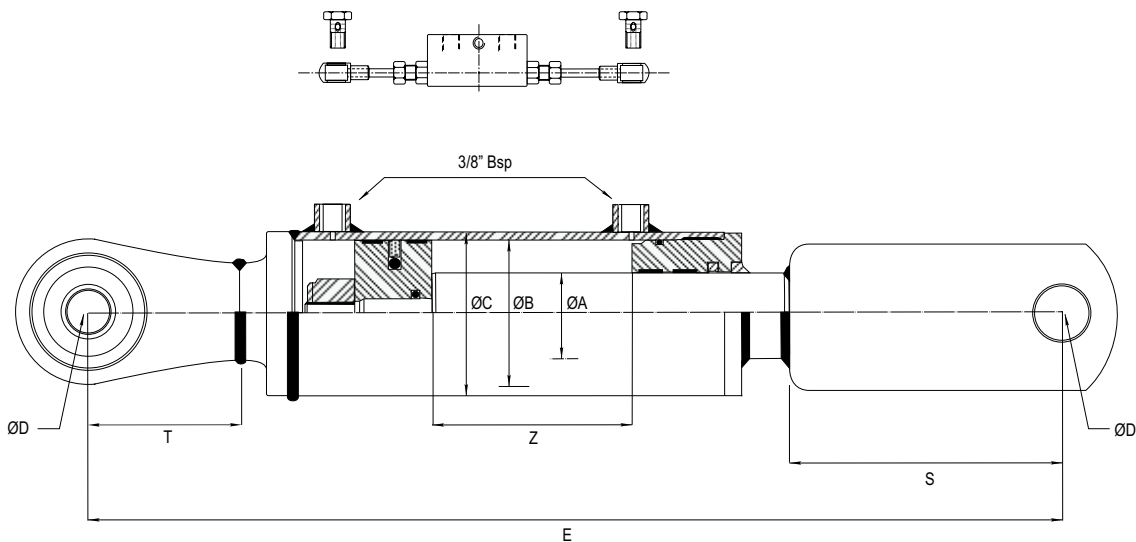
Working pressure: 180 bars.
Speed: 0.5 m/s.
Working temperature: -25°C - +80°C.
Oil: Mineral oil.
Rod: C45 f7 25 microns.
Tube: St52.3 Din2393 Iso H9

Opción : Kit válvula antirretorno doble pilotada (VADP008EX).
Enganche rápido soldado y rótula ajustable trasera / cruceta.

Option : Dual pilot operated check valve set. (VADP008EX).
Rapid hook welded and adjustable ball joint / articulated yoke.

Order Code	ØA	Z Carrera Stroke	E	B	C	D	S	Categoría Range	T	Vd. (Litros) (Liters)	Peso Weight Kgs.	Price
640/021	30	210	610	50	60	19.40	105	Cat.2	100	1.00	10.00	£POA
641/021	35		610	60	70	22.40	105	Cat.2		1.00	10.00	£POA
642/021	40		665	80	95	25.40	132	Cat.3		1.00	10.00	£POA
640/021C	30		645	50	60	30.40	105	Cat.2		1.00	10.00	£POA
641/021C	35		645	60	70	28.40	105	Cat.2		1.00	10.00	£POA
642/021C	40		700	80	95	32.40	132	Cat.3		1.00	10.00	£POA

* Unidades en milímetros.
Units in millimeters.



Presión de trabajo: 180 bars.
 Velocidad: 0.5 m/s.
 Temperatura de trabajo: -25°C - +80°C
 Aceite: Aceite mineral
 Vástago: C45 f7 25 micras.
 Tubo: St52.3 Din2393 Iso H9

Working pressure: 180 bars.
 Speed: 0.5 m/s.
 Working temperature: -25°C - +80°C.
 Oil: Mineral oil.
 Rod: C45 f7 25 microns.
 Tube: St52.3 Din2393 Iso H9

Opción : Kit válvula antirretorno doble pilotada (VADP008EX).
 Option : Dual pilot operated check valve set. (VADP008EX).

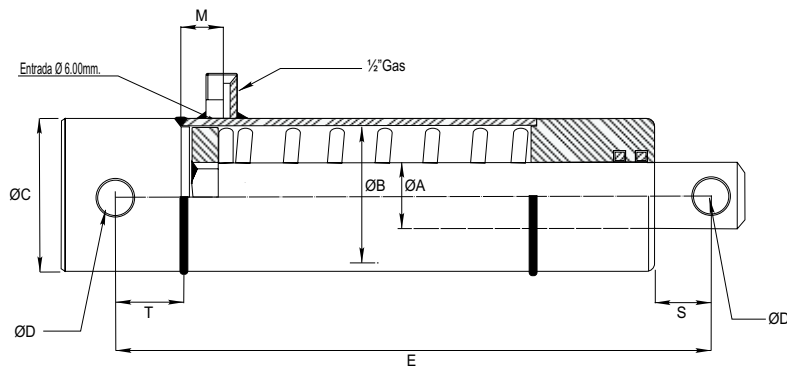
Aplicación : John deere 36.50 - 40.50 - 40.55 - 42.50.
 Aplicacion : John deere 36.50 - 40.50 - 40.55 - 42.50.

Order Code	ØA	Z Carrera Stroke	E	B	C	D	S	T	Vol. (Litros) (Liters)	Peso Weight Kgs.	Price
650/018	30	180	560	60	70	16.40	95	65	1.00	10.00	£POA
651/019	35	190	660	70	80	25.40	95	70	1.00	10.00	£POA
652/026	45	260	720	90	105	25.40	120	70	1.00	10.00	£POA

* Unidades en milímetros.
 Units in millimeters.

SERIES 700 - BRAKE CYLINDER (SINGLE ACTING)

Standard Brake Cylinder

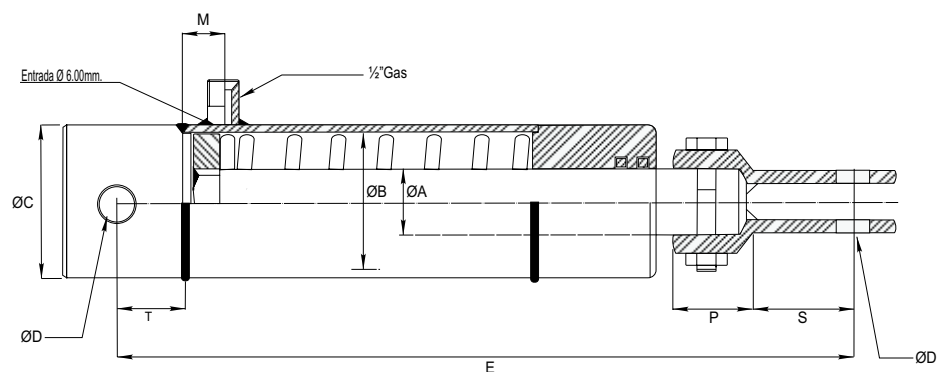


Order Code	ØA	Z Carrera Stroke	E	B	C	D	S	T	M	Vol. (Litros) (Liters)	Peso Weight Kgs.	Price
700/010	25	100	240	35	45	12.25	17	15	25	0.12	2.50	£58.15

* Unidades en milímetros.
Units in millimeters.

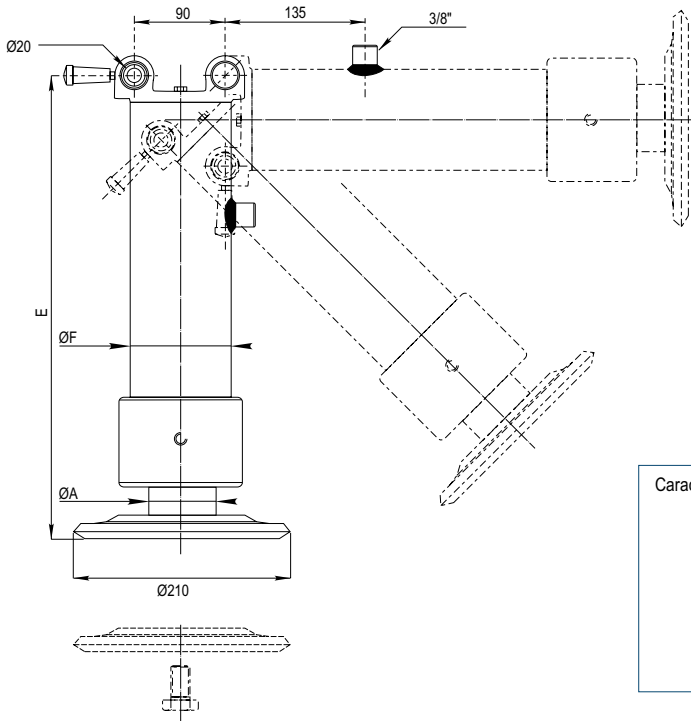
SERIES 710 - BRAKE CYLINDER (SINGLE ACTING)

Brake Cylinder (Boggie Type)



Order Code	ØA	Z Carrera Stroke	E	B	C	D	S	T	P	M	Vol. (Litros) (Liters)	Peso Weight Kgs.	Price
710/010	25	100	300	35	45	12.25	35	15	15	25	0.12	2.30	£POA

* Unidades en milímetros.
Units in millimeters.



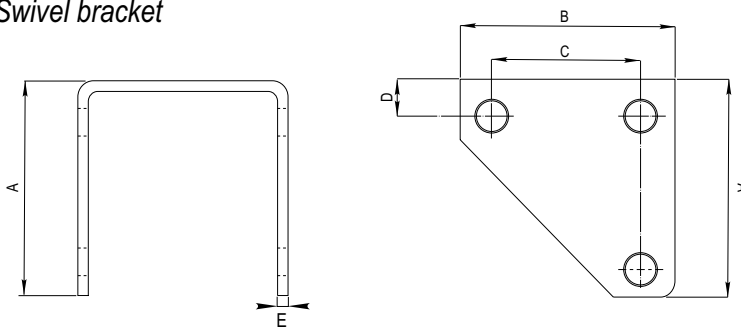
- Características / Features:**
- * Cilindro escamoteable / *Retractable cylinder.*
 - * Retroceso por muelle / *Spring return.*
 - * Presión de trabajo: 180 bars / *Working pressure: 180 bars.*
 - * Fácil desmontaje / *Easy disassembly.*
 - * Gran robustez / *Robust design.*

- * Capacidad de elevación: (180bars).
- * *Lifting capacity: (180bars).*
- Serie 801 = 7 tons.
- Serie 802 = 12 tons.

Order Code	ØA	Z Carrera Stroke	E	F	Vol. (Litros) (Liters)	Peso Weight Kgs.	Price
801/020	65	200	520	80	0.30	9.50	£POA
802/025	80	250	570	100	0.65	11.70	£POA

* Unidades en milímetros.
Units in millimeters.

Soporte basculante Swivel bracket



- *Chapa tratada mediante zinc trivalente o similar.
- *Acero en St52.3.

- *Plate treated with trivalent zinc or similar.
- *Steel St52.3.

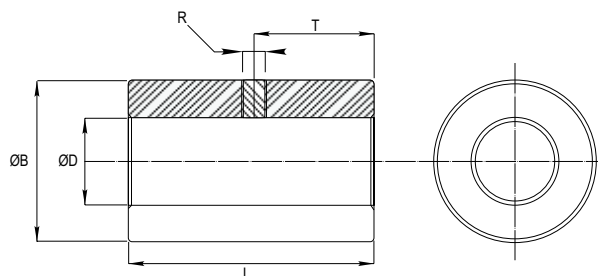
Order Code	A	B	C	D	E	Peso Weight Kgs.	Price
SPH142	142	140	90	40	7	2.65	£POA

* Unidades en milímetros.
Units in millimeters.

Standard bush

Order Code	ØD	ØB	T	L	ØR	Peso Weight Kgs.	Price
CRA0216	16	30	17.50	35	5.00	0.15	£3.33
CRA0220	20	35	20.00	40	7.00	0.20	£5.14
CRA0225	25	40	22.50	45	7.00	0.30	£7.49
CRA0230	30	50	27.50	55	7.00	0.55	£14.70
CRA0240	30	60	30.00	70	7.00	1.15	£21.30
CRA0250	40	80	40.00	80	8.50	2.35	£54.80
CRA0260	40	90	50.00	100	8.50	3.25	£88.84

* Unidades en milímetros.
Units in millimeters.

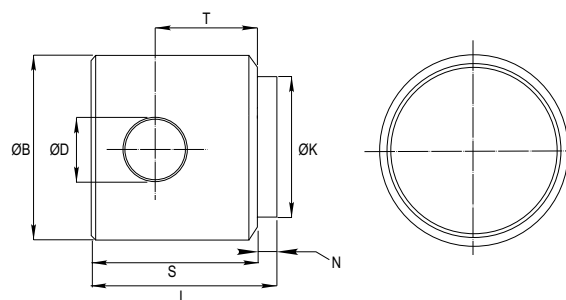


Material en St52.3 / Material in St52.3.
Otras medidas bajo pedido / Others measures on request.

End-plug With Hole

Order Code	ØD	ØB	ØK	L	T	S	N	Peso Weight Kgs.	Price
FT0114	14.25	40	32	35	17	32	3	0.45	£5.04
FT0116	16.25	40	32	35	17	32	3	0.40	£5.04
FT0216	16.25	50	40	44	22	41	3	0.85	£10.30
FT0220	20.50	50	40	44	22	41	3	0.75	£10.30
FT0320	20.50	55	45	44	22	41	3	1.05	£11.71
FT0420	20.50	60	50	50	25	47	3	1.35	£15.54
FT0425	25.50	60	50	50	25	47	3	1.20	£15.54
FT0525	25.50	65	55	50	25	47	3	1.40	£13.63
FT0625	25.50	70	60	50	25	47	3	1.65	£19.51
FT0725	25.50	75	65	58	29	55	3	2.05	£22.42
FT0830	30.50	80	70	58	29	55	3	2.40	£33.69
FT0930	30.50	90	80	58	29	55	3	3.10	£46.01
FT1030	30.50	95	80	58	29	55	3	3.80	£51.24
FT1130	30.50	100	90	60	29	57	3	3.90	£57.40
FT1230	30.50	105	90	60	29	57	3	4.80	£64.64
FT1330	30.50	115	100	66	29	60	6	5.60	£65.56
FT1440	40.50	140	120	82	35	76	6	9.40	£84.05
FT1560	60.50	150	130	108	50	100	8	13.50	£110.20

* Unidades en milímetros.
Units in millimeters.

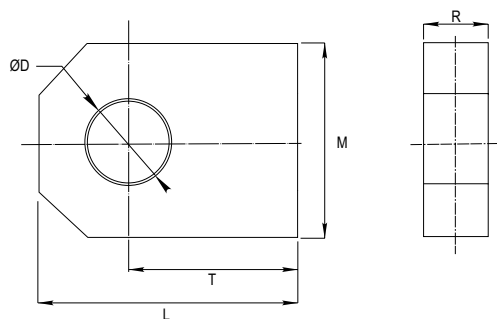


Material en St52.3 / Material in St52.3.
Otras medidas bajo pedido / Others measures on request.

Male Clevis

Order Code	ØD	M	T	L	R	Peso Weight Kgs.	Price
CRB0216	16	35	25	42	16	0.15	£POA
CRB0220	20	35	25	42	20	0.20	£POA
CRB0225	25	50	35	60	25	0.30	£POA
CRB0230	30	60	40	70	30	0.55	£POA
CRB0240	30	70	45	80	35	1.15	£POA
CRB0250	40	80	55	95	40	2.35	£POA

* Unidades en milímetros.
Units in millimeters.

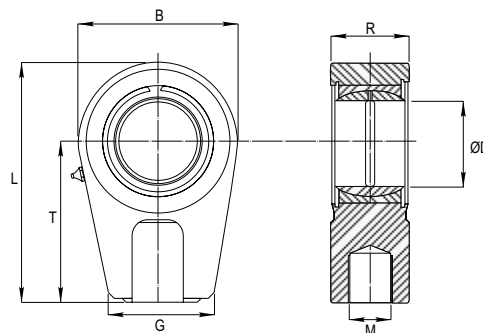


*Material en St52.3 / Material in St52.3.
/ Others measures on request.

Ball Joint TPR/N Din 648

Order Code	ØD	B	G	L	T	M	R	Peso Weight Kgs.	Price
TPR220N	20	56	41	78	50	M16X1.5	19	0.43	£POA
TPR225N	25	56	41	78	50	M16X1.5	23	0.48	£POA
TPR230N	30	64	46	92	60	M22X1.5	28	0.74	£POA
TPR235N	35	78	58	109	70	M28X1.5	30	1.20	£POA
TPR240N	40	94	66	132	85	M35X1.5	35	2.00	£POA
TPR250N	50	116	88	163	105	M45X1.5	40	3.80	£POA

* Unidades en milímetros.
Units in millimeters.

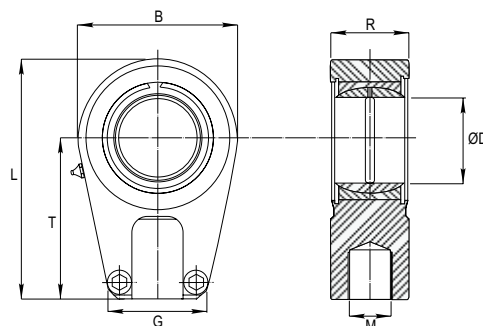


Superficie de contacto: acero/acero - Contact surface: steel/steel.
Equivalente / Equivalent INA GIHR...DO
Equivalente / Equivalent SKF SIRD...ES

Ball Joint TPR/U Din 648

Order Code	ØD	B	G	L	T	M	R	Peso Weight Kgs.	Price
TPR220U	20	56	41	78	50	M16X1.5	19	0.43	£POA
TPR225U	25	56	41	78	50	M16X1.5	23	0.48	£POA
TPR230U	30	64	46	92	60	M22X1.5	28	0.74	£POA
TPR235U	35	78	58	109	70	M28X1.5	30	1.20	£POA
TPR240U	40	94	66	132	85	M35X1.5	35	2.00	£POA
TPR250U	50	116	88	163	105	M45X1.5	40	3.80	£POA

* Unidades en milímetros.
Units in millimeters.

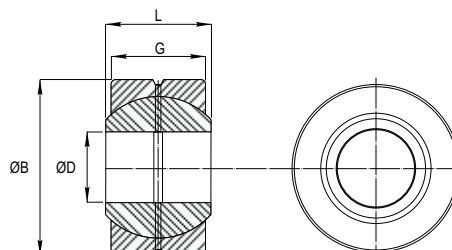


Superficie de contacto: acero/acero - Contact surface: steel/steel.
Equivalente / Equivalent INA GIHR-K...DO
Equivalente / Equivalent SKF SIR...ES

Radial Ball Joint GE

Order Code	ØD	ØB	G	L	Peso Weight Kgs.	Price
GE215X	15	26	11	13	0.03	£POA
GE220X	20	32	14	16	0.05	£POA
GE225X	25	42	18	21	0.12	£POA
GE230X	30	50	23	27	0.23	£POA
GE235X	35	55	26	30	0.30	£POA
GE240X	40	62	28	33	0.38	£POA
GE245X	45	72	31	36	0.60	£POA
GE250X	50	80	36	42	0.87	£POA

* Unidades en milímetros.
Units in millimeters.

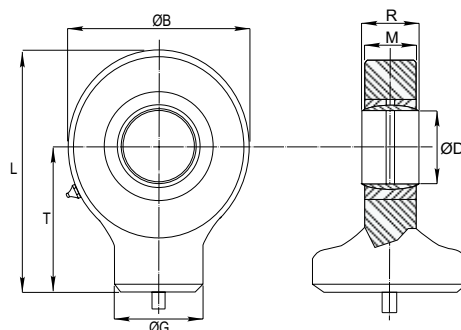


Superficie de contacto: acero/acero - Contact surface: steel/steel.
Equivalente / Equivalent INA GE...DO
Equivalente / Equivalent SKF GE...ES

Weldable Ball Joint Din648

Order Code	ØD	ØB	ØG	L	T	M	R	Peso Weight Kgs.	Price
TAC0215	15	40	21	51	31	10	12	0.12	£12.17
TAC0220	20	53	28	65	38	13	16	0.23	£12.13
TAC0225	25	64	34	77	45	17	20	0.43	£17.19
TAC0230	30	73	40	88	51	19	22	0.64	£22.93
TAC0235	35	82	47	102	61	21	25	0.96	£27.53
TAC0240	40	92	52	115	69	23	28	1.30	£37.11
TAC0245	45	102	58	128	77	27	32	1.80	£46.40
TAC0250	50	112	62	144	88	30	35	2.50	£59.30

* Unidades en milímetros.
Units in millimeters.

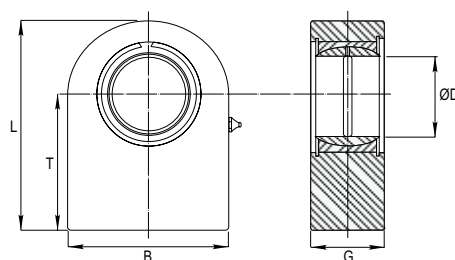


Superficie de contacto: acero/acero - Contact surface: steel/steel.
Equivalente / Equivalent INA GK...DO
Equivalente / Equivalent SKF SC...ES

Spheric Ball Joint TPN Din648

Order Code	ØD	B	G	L	T	Peso Weight Kgs.	Price
TPN320	20	50	20	63	38	0.35	£11.00
TPN325	25	55	24	73	45	0.55	£15.33
TPN330	30	65	29	83	51	0.90	£20.66
TPN335	35	83	31	102	61	1.50	£25.39
TPN340	40	100	36	119	69	2.40	£47.95
TPN345	45	110	41	132	77	3.40	£64.38
TPN350	50	123	41	150	88	4.40	£77.46

* Unidades en milímetros.
Units in millimeters.

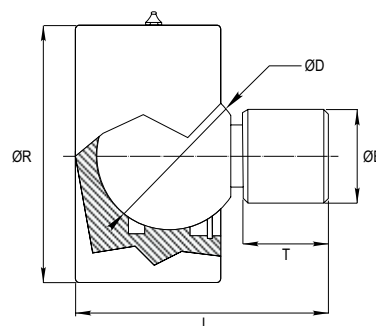


Superficie de contacto: acero/acero - Contact surface: steel/steel.
Equivalente / Equivalent INA GF...DO
Equivalente / Equivalent SKF SCF...DO

Swinging End

Order Code	ØD	ØB	T	L	ØR	Peso Weight Kgs.	Price
BSK085	50	40	20	82	85	2.20	£159.36
BSK098	60	50	25	100	98	3.40	£233.72
BSK105	70	60	30	115	105	4.82	£277.93

* Unidades en milímetros.
Units in millimeters.

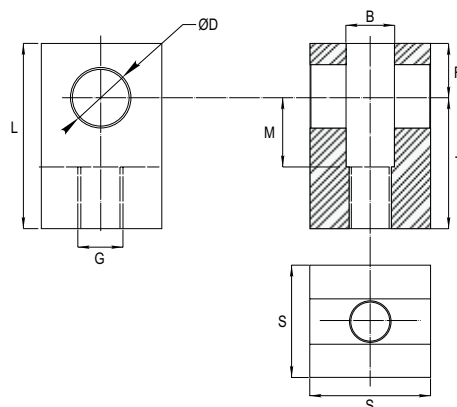


Base oscilante soldable / Weldable swinging end.
Roscada bajo pedido / On request threaded.

Machining Fork (threaded)

Order Code	ØD	G	B	L	T	M	R	S	Peso Weight Kgs.	Price
FR0216	16.20	M16x1.5	16	55	39	24	16	35	0.12	£POA
FR0220	20.25	M20x1.5	20	65	45	30	20	40	0.23	£POA
FR0225	25.25	M24x2.0	25	70	50	30	20	50	0.43	£POA
FR0230	30.25	M30x2.0	30	90	65	35	25	60	0.64	£POA
FR0235	35.25	M33x2.0	35	105	75	40	30	70	0.96	£POA

* Unidades en milímetros.
Units in millimeters.

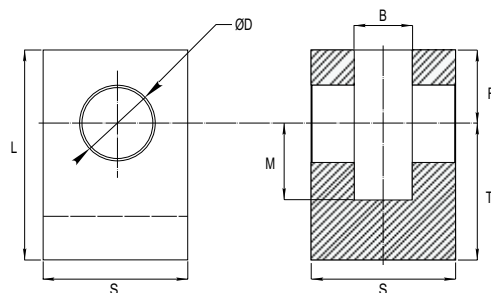


Material en St52.3 / Material in St52.3.
Roscada / Threaded.

Machining Fork (weldable)

Order Code	ØD	B	L	T	M	R	S	Peso Weight Kgs.	Price
FS0216	16.20	16	55	39	24	16	35	0.12	£POA
FS0220	20.25	20	65	45	30	20	40	0.23	£POA
FS0225	25.25	25	70	50	30	20	50	0.43	£POA
FS0230	30.25	30	90	65	35	25	60	0.64	£POA
FS0235	35.25	35	105	75	40	30	70	0.96	£POA

* Unidades en milímetros.
Units in millimeters.

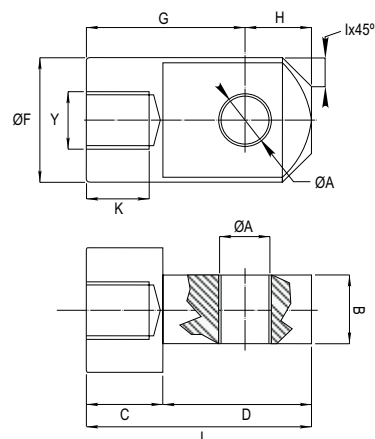


Material en St52.3 / Material in St52.3.
Soldable / Weldable.

Plain Rod Eye

Order Code	Y	ØA	B	C	D	K	F	G	H	I	J	Peso Weight Kgs.	Price
FK032	M12x1.25	12	16	16	31	18	26	34	13	6	47	2.20	£POA
FK040	M16x1.50	16	20	24	41	22	32	49	16	8	65	3.40	£POA
FK050	M20x1.50	20	25	28	48	26	40	56	20	10	76	4.82	£POA
FK060	M27x2.00	25	32	35	57	33	50	67	25	15	92	2.20	£POA
FK070	M27x2.00	25	32	35	57	33	50	67	25	15	92	3.40	£POA
FK080	M33x2.00	32	40	44	77	42	65	89	32	17	121	4.82	£POA
FK090	M33x2.00	32	40	44	77	42	65	89	32	17	121	3.40	£POA
FK100	M42x2.00	40	50	54	95	52	80	109	40	20	149	4.82	£POA

* Unidades en milímetros.
Units in millimeters.

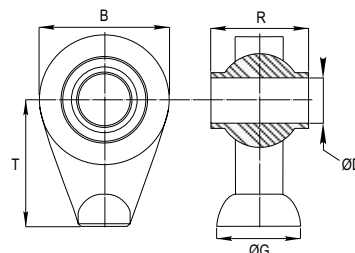


Superficie pavonada / Blued surface.
Casquillo interior en bronce / Inside bush in bronze.

Weldable Ball Joint

Order Code	ØD	B	ØG	T	R	Peso Weight Kgs.	Price
TNC0115	19.30	62	34	60	44	0.62	£POA
TNC0116	20.20	62	34	60	44	0.61	£POA
TNC0120	25.40	75	38	65	51	0.95	£POA
TNC0124	25.40	85	48	75	51	1.65	£POA
TNC0128	30.20	85	48	75	51	1.55	£POA
TNC0132	35.20	85	50	65	55	1.30	£POA
TNC0134	40.20	108	60	85	75	3.45	£POA
TNC0138	45.20	108	60	85	75	3.25	£POA
TNC0142	50.20	108	60	85	75	3.05	£POA

* Unidades en milímetros.
Units in millimeters.

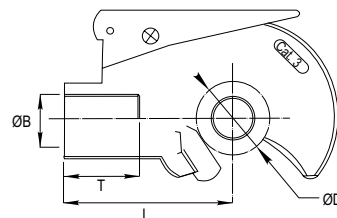


Superficie de contacto: acero-acero / Contact surface : steel-steel.
Tratamiento zinc trivalente / Zinc trivalent treatment.

Rapid Hook (female)

Order Code	Cat.	ØD	ØB	T	L	Peso Weight Kgs.	Price
EPS2050	2	50	M30X2.0	35	102	2.30	£109.89
EPS3060	3	60	M36X2.0	40	132	4.04	£129.81

* Unidades en milímetros.
Units in millimeters.



Superficie de contacto: acero-acero / Contact surface : steel-steel.
Tratamiento zinc trivalente / Zinc trivalent treatment.
El enganche rápido se suministra sin bola / Rapid hook is supplied without ball.

Rapid Hook (male)

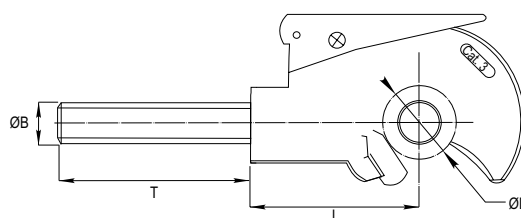
Order Code	Cat.	ØD	ØB	T	L	Peso Weight Kgs.	Price
EPM2050	2	50	M30X3.0	180	102	3.40	£109.89
EPM3060	3	60	M36X3.0	180	132	5.78	£129.81

* Unidades en milímetros.
Units in millimeters.

Cadena enganche rápido
Rapid hook chain

Order Code	Longitud Length	Peso Weight Kgs.	Price
CH0150	1.500	0.00	£9.46
CH0200	2.000	0.00	£12.61

* Unidades en milímetros.
Units in millimeters.

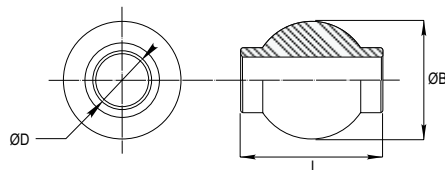


Superficie de contacto: acero-acero / Contact surface : steel-steel.
Tratamiento zinc trivalente / Zinc trivalent treatment.
El enganche rápido se suministra sin bola / Rapid hook is supplied without ball.

Rapid Hook Ball

Order Code	ØB	ØD	L	Peso Weight Kgs.	Price
GA216X	50	19	44	0.34	£6.72
GA220X	50	19	51	0.42	£6.93
GA225X	50	22	51	0.47	£7.69
GA230X	50	25	44	0.34	£6.18
GA235X	50	25	51	0.35	£6.35
GA240X	50	30	51	0.44	£6.18
GA245X	60	25	51	0.64	£10.24
GA250X	60	28	51	0.59	£9.93
GA255X	60	32	51	0.56	£9.41

* Unidades en milímetros.
Units in millimeters.

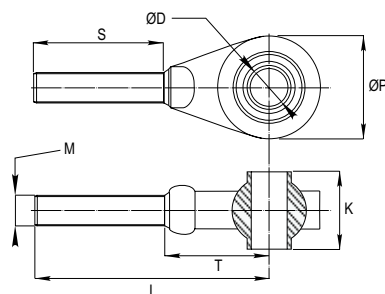


Bola para enganche rápido EPS y EPM (página 24).
Ball for rapid hook EPS and EPM (page 24).
Tratamiento zinc trivalente.
Zinc trivalent treatment.

Threaded Ball Joint

Order Code	Cat.	ØD	M	ØP	S	L	T	K	Peso Weight Kgs.	Price
RPS3355	1	19	M30X2.0	62	175	225	55	44	1.36	£POA
RPS4400	2	25	M30X2.0	75	165	220	55	51	1.62	£POA

* Unidades en milímetros.
Units in millimeters.

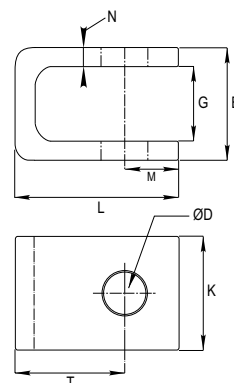


Rótula roscada para cilindro tercer punto Serie 600 (página 14).
Ball for hydraulic top link 600 series (page 14).
Tratamiento zinc trivalente.
Zinc trivalent treatment.

Standard Fork (folded)

Order Code	ØD	B	G	L	T	M	K	N	Peso Weight Kgs.	Price
KX0216	16	32	16	47	33	14	35	8	0.43	£17.80
KX0220	20	36	20	51	35	16	40	8	0.48	£20.15
KX0225	25	45	25	62	40	22	45	10	0.74	£24.79
KX0230	30	60	30	75	50	25	60	15	1.20	£29.05
KX0235	35	65	35	85	55	30	70	15	2.00	£32.87
KX0240	40	80	40	95	60	35	80	20	3.80	£47.81

* Unidades en milímetros.
Units in millimeters.

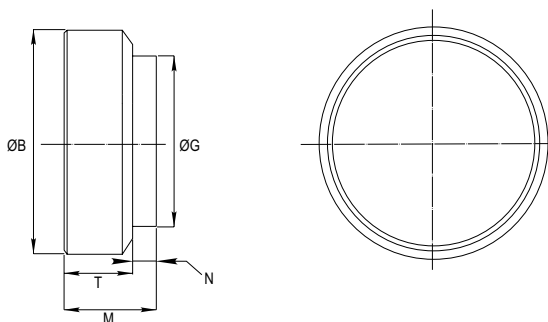


Material en S152.3 / Material in S152.3.
Otras medidas bajo pedido / Other measures on request.

Standard End-plug

Order Code	ØB	ØG	T	M	N	Peso Weight Kgs.	Price
FE0116	40	32	10	13	3	0.40	£2.26
FE0220	50	40	15	18	3	0.75	£2.78
FE0320	55	45	15	18	3	1.05	£4.58
FE0425	60	50	15	18	3	1.20	£6.11
FE0525	65	55	15	18	3	1.40	£14.03
FE0625	70	60	15	18	3	1.65	£6.67
FE0725	75	65	15	18	3	2.05	£7.57
FE0830	80	70	15	18	3	2.40	£10.12
FE0930	90	80	15	18	3	3.10	£13.55
FE1030	95	80	15	18	3	3.80	£15.14
FE1130	100	90	15	18	3	3.90	£16.43
FE1230	105	90	15	18	3	4.80	£19.81
FE1330	115	100	20	26	6	5.60	£20.91
FE1440	140	120	20	26	6	9.40	£27.08
FE1560	150	130	20	28	8	13.50	£31.37

* Unidades en milímetros.
Units in millimeters.



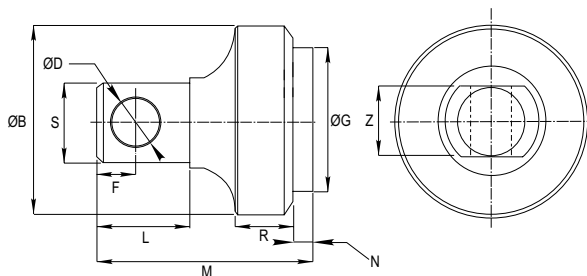
Material en St52.3 / Material in St52.3.
Otras medidas bajo pedido / Other measures on request.

End-plug XR

Order Code	ØB	ØG	ØD	L	R	S	F	M	N	Z	Peso Weight Kgs.	Price
XR0800	80	70	28.20	52	15	60	25	76	3.0	40	3.15	£POA
XR0950	95	80	28.20	52	15	60	25	76	3.0	40	4.40	£POA
XR1050	105	90	28.20	52	15	60	25	76	3.0	40	5.40	£POA
XR1150	115	100	28.20	52	15	60	25	79	6.0	40	6.60	£POA

* Unidades en milímetros.
Units in millimeters.

Fondo diseñado para articulación americana ATP (página 28).
End design for ATP articulated yoke (page 28).



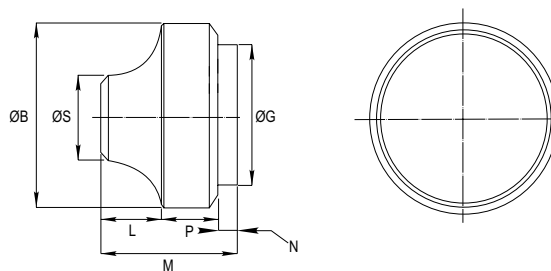
Material en St52.3 / Material in St52.3.
Otras medidas bajo pedido / Other measures on request.

End-plug XS

Order Code	ØB	ØG	ØS	L	P	M	N	Peso Weight Kgs.	Price
XS0600	60	50	30.00	15	5	23	3.0	0.70	£POA
XS0700	70	60	40.00	20	15	38	3.0	1.25	£POA
XS0800	80	70	50.00	20	15	38	3.0	1.65	£POA
XS0900	90	80	50.00	20	15	38	6.0	2.30	£POA
XS0950	95	80	50.00	20	15	38	3.0	2.45	£POA
XS1050	105	90	50.00	22	15	40	3.0	3.25	£POA
XS1150	115	100	50.00	22	15	43	6.0	3.75	£POA

* Unidades en milímetros.
Units in millimeters.

Fondo diseñado para rótulas TNC (página 24).
End design for TNC ball joint (page 24).
Material en St52.3 / Material in St52.3.

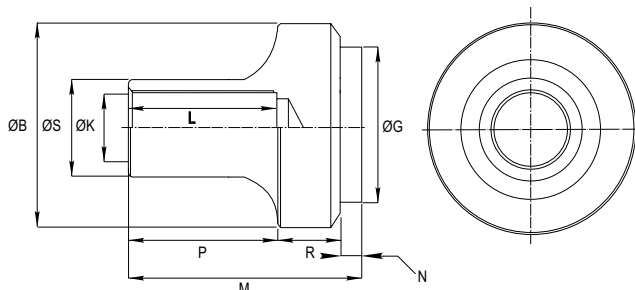


End-plug XT

Order Code	ØB	ØG	ØK	ØS	L	R	P	M	N	Peso Weight Kgs.	Price
XT0800	80	70	M30x3	50	100	15	100	118	3.0	2.15	£POA
XT0950	90	80	M36x3	50	100	15	100	118	3.0	2.80	£POA
XT1050	95	80	M36x3	60	100	15	100	118	3.0	3.15	£POA
XT1150	105	90	M36x3	60	100	15	100	121	6.0	3.65	£POA

* Unidades en milímetros.
Units in millimeters.

Fondo diseñado para rótulas RPS y articulaciones ATP (ajustable).
End design for ball joints RPS and articulated yokes ATP (adjustable).

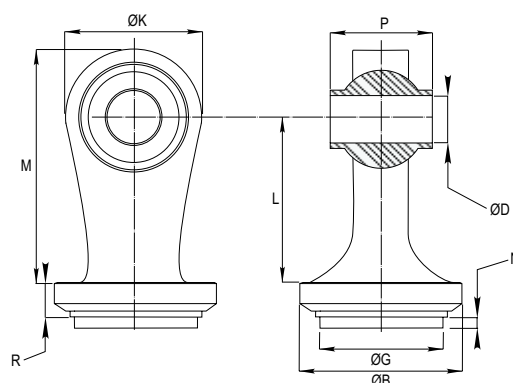


Weld-on Ball End SW

Order Code	ØB	ØG	ØK	ØD	L	R	P	M	N	Peso Weight Kgs.	Price
SW0700	70	60	85	25.40	105	10	51	150	2.0	2.00	£POA
SW0800	80	70	85	25.40	105	10	51	150	2.0	2.30	£POA
SW0950	95	80	85	25.40	105	10	51	150	2.0	2.65	£POA
SW0960	95	80	85	32.20	108	10	51	150	2.0	2.55	£POA
SW1050	105	90	85	25.40	108	10	51	150	2.0	3.05	£POA

* Unidades en milímetros.
Units in millimeters.

Material en St52.3 / Material in St52.3.
Superficie protegida contra la corrosión / Protected surface against corrosion.

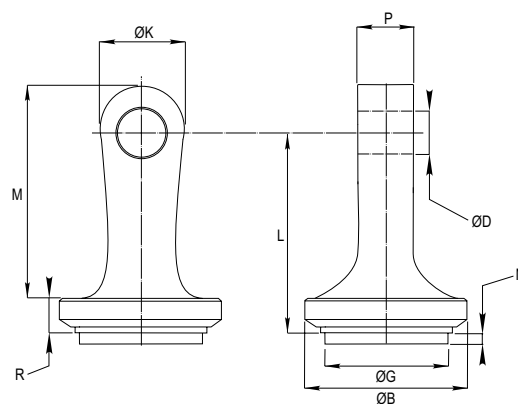


Forged End SZ

Order Code	ØB	ØG	ØK	ØD	L	R	P	M	N	Peso Weight Kgs.	Price
SZ0850	80	70	50	28.20	90	18	39	100	4.5	2.50	£35.68
SZ0900	90	80	50	28.20	90	18	39	100	4.5	2.55	£35.68
SZ1050	105	90	50	28.20	88	18	39	102	4.5	2.65	£35.09

* Unidades en milímetros.
Units in millimeters.

Material en St52.3 / Material in St52.3.
Superficie protegida contra la corrosión / Protected surface against corrosion.

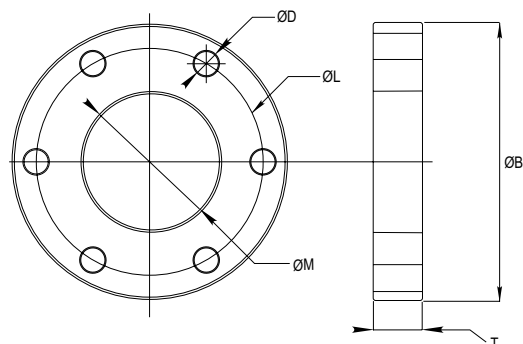


Standard Flange BR

Order Code	ØB	ØM	T	ØL	ØD	Peso Weight Kgs.	Price
BRL0400	80	39	10.00	67	7.00	0.15	£21.16
BRL0500	100	49	12.00	82	9.00	0.20	£22.41
BRL0600	125	59	12.00	103	11.00	0.30	£27.22
BRL0700	145	69	12.00	120	13.00	7.00	£40.63
BRL0800	170	79	15.00	142	15.00	7.00	£48.30
BRL0900	170	89	15.00	142	15.00	7.00	£45.32
BRL1000	202	99	15.00	170	17.00	0.15	£75.19
BRP0750	145	74	24.00	120	13.00	0.20	£69.58
BRP0850	170	84	24.00	142	15.00	0.30	£84.32
BRP0950	170	94	24.00	142	15.00	7.00	£83.67
BRP1050	202	104	24.00	170	17.00	7.00	£50.23
BRP1150	202	114	28.00	170	17.00	7.00	£132.52
BRP1400	250	138	30.00	210	21.00	7.00	£137.05
BRP1500	280	148	30.00	230	21.00	7.00	£146.52

* Unidades en milímetros.
Units in millimeters.

BRL Brida Serie ligera / Light flange series.
BRP Brida Serie pesada / Heavy duty flange series.

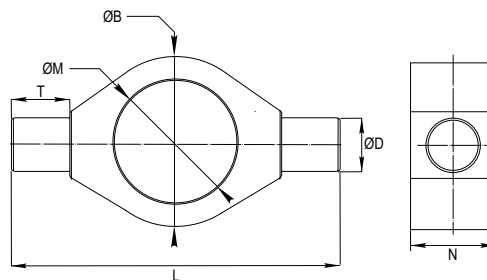


*Material en St52.3 / Material in St52.3.

Weld on Trunnion MS

Order Code	ØD	ØB	T	L	M	N	Peso Weight Kgs.	Price
MS0500	25	65	15	95	50	29	0.15	£POA
MS0600	30	75	20	115	60	34	0.20	£POA
MS0700	30	90	20	130	70	34	0.30	£POA
MS0800	40	105	30	165	80	54	7.00	£POA
MS0850	40	105	30	165	85	54	7.00	£POA
MS0900	45	120	35	190	90	58	7.00	£POA
MS0950	45	120	35	190	95	58	0.30	£POA
MS1000	45	130	35	200	100	58	7.00	£POA
MS1050	45	130	35	200	105	58	7.00	£POA
MS1150	50	145	40	225	115	68	7.00	£POA

* Unidades en milímetros.
Units in millimeters.

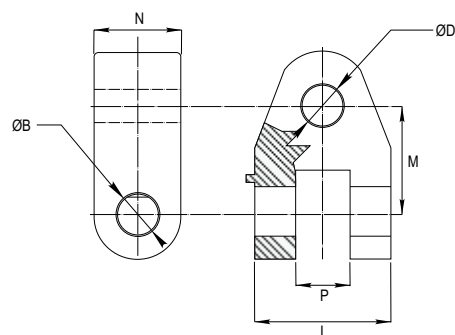


*Material en St52.3 / Material in St52.3.

Articulated Yoke ATP

Order Code	ØD	ØB	M	L	P	N	Peso Weight Kgs.	Price
ATP0219	19.40	28.20	63	87	40	50	2.15	£34.74
ATP0220	20.40	28.20	63	87	40	50	2.12	£34.74
ATP0222	22.40	28.20	63	87	40	50	2.10	£34.35
ATP0225	25.40	28.20	63	87	40	50	2.05	£34.35
ATP0228	28.40	28.20	63	87	40	50	1.98	£33.61
ATP0230	30.40	28.20	63	87	40	50	1.95	£33.61
ATP0232	32.40	28.20	63	87	40	50	1.90	£33.22

* Unidades en milímetros.
Units in millimeters.

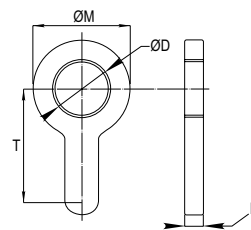


*Tratamiento zinc trivalente / Zinc trivalent treatment.

Top Link Locking Collars PS

Order Code	ØD	ØM	T	L	Peso Weight Kgs.	Price
PS0205	M30x3	45	60.00	6.0	0.15	£POA
PS0210	M36x3	60	88.00	10.0	0.20	£POA

* Unidades en milímetros.
Units in millimeters.

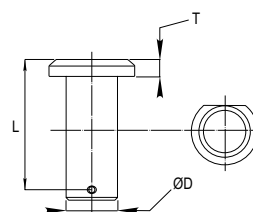


* Tratamiento zinc trivalente / Zinc trivalent treatment.

ATP Pin Articulated Yoke

Order Code	ØD	T	L	Peso Weight Kgs.	Price
PA0120	28	5.0	90	0.15	£POA

* Unidades en milímetros.
Units in millimeters.

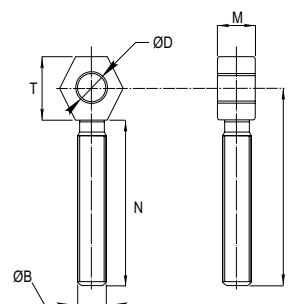


* Incluye pasador.
Elastic pin included.

Threaded Pin Articulated Yoke PR

Order Code	ØD	ØB	T	L	M	N	Peso Weight Kgs.	Price
PR0300	28	M30x3	55	220	40	190	0.15	£POA

* Unidades en milímetros.
Units in millimeters.



* Tratamiento zinc trivalente / Zinc trivalent treatment.

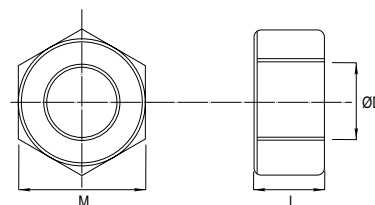
Hexagonal Nut TEX

Order Code	D	L	M	Peso Weight Kgs.	Price
TEX0030	M30x3	35	55	0.15	£POA

* Unidades en milímetros.
Units in millimeters.

**Tuerca soldable para tercer punto Serie 600.
Calidad material : St52.3.

**Lock nuts for Series 600 hydraulik top link.
Material grade: St52.3.



*Material : Acero St52.3 / Material : St52.3 steel.

Head Bush CGSE

Order Code	ØA	ØB	ØC	ØM	L	N	Peso Weight Kgs.	Price
CGSE032025	25	32	32	37x1.5	33	8	0.45	£POA
CGSE040030	30	40	40	45x2.0	42	7	0.60	£POA
CGSE045035	35	45	45	45x2.0	42	7	0.85	£POA
CGSE050040	40	50	50	55x2.0	44	8	1.35	£POA
CGSE050045	45	50	50	55x2.0	44	8	1.25	£POA
CGSE055050	50	55	55	55x2.0	44	8	1.20	£POA
CGSE060055	55	60	60	65x2.0	47	8	1.95	£POA
CGSE065060	60	65	65	65x2.0	47	8	1.85	£POA
CGSE080070	70	80	80	65x2.0	47	8	1.70	£POA
CGSE100090	90	100	100	65x2.0	47	8	1.55	£POA

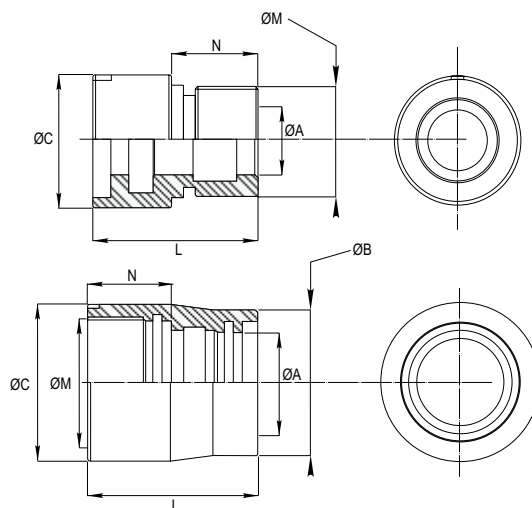
* Unidades en milímetros.
Units in millimeters.

Características:

- * Material en DIN C45.
- * Cabeza guiada.
- * Posibilidad de intercambiar guías:
Resistencia al esfuerzo radial:
Resina acetal 30N/mm².
Resina fenólica 300N/mm².
- * Collarín: Labios asimétricos 90 shores.
- * Rascador metálico
- * Junta tórica 90 shores.

Technical data:

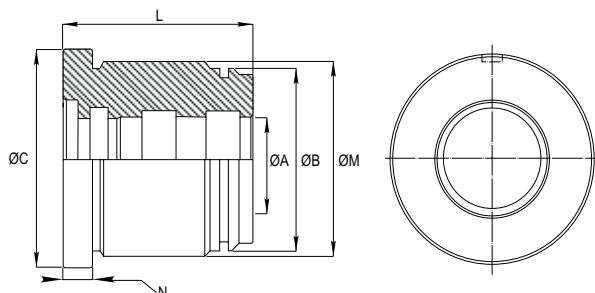
- * Material in DIN C45.
- * Guided head.
- * Ability of change guides:
Radial stress resistance:
Acetal resine 30N/mm².
Phenolic resine 300N/mm².
- * Rod seal : 90 shores asymmetrical lips.
- * Metal wiper
- * O-ring : 90 shores.



Head Bush CGDE

Order Code	ØA	ØB	ØC	ØM	L	N	Peso Weight Kgs.	Price
CGDE032020	20	32	40	37x1.5	33	8	0.45	£POA
CGDE040020	20	40	50	45x2.0	42	7	0.60	£17.92
CGDE040025	25	40	50	45x2.0	42	7	0.85	£POA
CGDE050025	25	50	60	55x2.0	44	8	1.35	£22.32
CGDE050030	30	50	60	55x2.0	44	8	1.25	£POA
CGDE050035	35	50	60	55x2.0	44	8	1.20	£POA
CGDE060025	25	60	70	65x2.0	47	8	1.95	£14.54
CGDE060030	30	60	70	65x2.0	47	8	1.85	£14.54
CGDE060035	35	60	70	65x2.0	47	8	1.70	£14.54
CGDE060040	40	60	70	65x2.0	47	8	1.55	£POA
CGDE070035	35	70	80	75x2.0	51	10	2.85	£21.60
CGDE070040	40	70	80	75x2.0	51	10	2.45	£21.55
CGDE070045	45	70	80	75x2.0	51	10	2.25	£POA
CGDE070050	50	70	80	75x2.0	51	10	2.00	£POA
CGDE080035	35	80	90	85x2.0	56	10	0.30	£29.38
CGDE080040	40	80	90	85x2.0	56	10	7.00	£29.38
CGDE080045	45	80	90	85x2.0	56	10	7.00	£29.38
CGDE080050	50	80	90	85x2.0	56	10	7.00	£42.42
CGDE090040	40	90	100	95x2.0	60	10	0.15	£42.52
CGDE090045	45	90	100	95x2.0	60	10	0.20	£42.52
CGDE090050	50	90	100	95x2.0	60	10	0.20	£42.42
CGDE090060	60	90	100	95x2.0	60	10	0.30	£POA
CGDE100050	50	100	115	106x2.0	66	15	7.00	£59.70
CGDE100060	60	100	115	106x2.0	66	15	7.00	£POA

* Unidades en milímetros.
Units in millimeters.



Características:

- * Material en DIN C45.
- * Cabeza guiada.
- * Posibilidad de intercambiar guías :
Resistencia al esfuerzo radial:
Resina acetal 30N/mm².
Resina fenólica 300N/mm².
- * Collarín: Doble labio compacto 93 shores.
- * Rascador metálico
- * Junta tórica 90 shores.

Technical data:

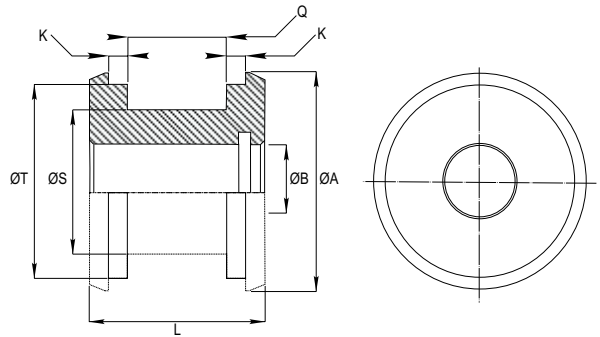
- * Material in DIN C45.
- * Guided head.
- * Ability of change guides :
Radial stress resistance:
Acetal resine 30N/mm².
Phenolic resine 300N/mm².
- * Rod seal: Compact double lip 93 shores.
- * Metal wiper
- * O-ring : 90 shores.

Order Code	ØA	ØB	ØC	ØM	L	N	Peso Weight Kgs.	Price
CGDE100070	70	100	115	106x2.0	66	15	7.00	£POA
CGDE120060	60	120	140	126x2.0	68	15	0.60	£POA
CGDE120070	70	120	140	126x2.0	68	15	0.85	£POA
CGDE120080	80	120	140	126x2.0	68	15	1.35	£POA
CGDE130070	70	130	150	136x2.0	75	15	1.25	£POA
CGDE130080	80	130	150	136x2.0	75	15	1.20	£POA
CGDE130090	90	130	150	136x2.0	75	15	1.95	£POA

Standard Piston OTD

Order Code	ØA	ØB	ØS	ØT	K	Q	L	Peso Weight Kgs.	Price
OTD032016	32	16	24	28.00	3.20	15.50	25	0.45	£3.48
OTD040016	40	16	32	36.00	3.20	15.50	35	0.60	£5.72
OTD040022	40	22	32	36.00	3.20	15.50	35	0.85	£17.94
OTD050022	50	22	38	46.00	4.20	20.50	35	1.35	£6.97
OTD050026	50	26	38	46.00	4.20	20.50	35	1.25	£6.97
OTD060022	60	22	48	56.00	4.20	20.50	35	1.20	£8.81
OTD060026	60	26	48	56.00	4.20	20.50	35	1.95	£9.75
OTD070026	70	26	58	66.00	4.20	20.50	36	1.85	£11.78
OTD070032	70	32	58	66.00	4.20	20.50	36	1.70	£11.78
OTD080026	80	26	66	86.00	5.20	22.50	44	1.55	£16.99
OTD080032	80	32	66	86.00	5.20	22.50	44	2.85	£16.99
OTD090032	90	32	76	96.00	5.20	22.50	44	2.45	£22.50
OTD100040	100	40	86	96.00	5.20	22.50	47	1.85	£35.14
OTD120040	120	40	106	116.00	5.20	22.50	47	1.70	£46.81
OTD130060	130	60	105	122.60	9.52	25.40	60	1.55	£POA

* Unidades en milímetros.
Units in millimeters.

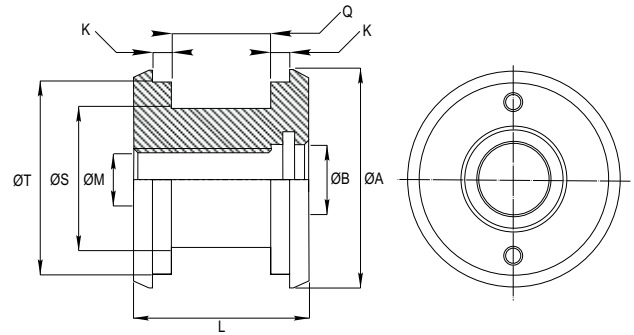


Material en DIN C45 / Material in DIN C45.
Montaje pistón modo : DPS (3 piezas) y DAS (5 piezas).
Mounting mode : DPS (3 pieces) and DAS (5 pieces).

Threaded Piston OTR

Order Code	ØA	ØB	ØS	ØT	ØM	K	Q	L	Peso Weight Kgs.	Price
OTR032012	32	16	24	28.00	M12x1.5	3.20	15.50	25	0.45	£POA
OTR040016	40	20	32	36.00	M16x1.5	3.20	15.50	35	0.60	£POA
OTR050020	50	25	38	46.00	M20x1.5	4.20	20.50	35	0.85	£POA
OTR060020	60	25	48	56.00	M20x1.5	4.20	20.50	35	1.35	£POA
OTR070030	70	35	58	66.00	M30x2.0	4.20	20.50	36	1.25	£POA
OTR080030	80	35	66	76.00	M30x2.0	5.20	22.50	44	1.20	£POA
OTR090030	90	35	76	86.00	M30x2.0	5.20	22.50	44	1.95	£POA
OTR100030	100	35	86	96.00	M30x2.0	5.20	22.50	47	1.85	£POA
OTR120040	120	45	106	116.00	M40x2.0	5.20	22.50	47	1.70	£POA
OTR130040	130	45	105	122.60	M40x2.0	9.52	25.40	60	1.55	£POA

* Unidades en milímetros.
Units in millimeters.

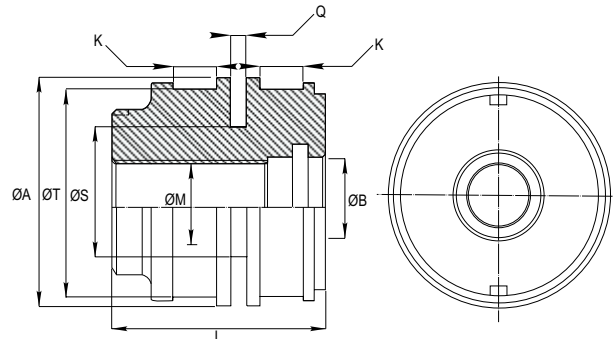


Material en DIN C45 / Material in DIN C45.
Montaje pistón modo : DPS (3 piezas) y DAS (5 piezas).
Mounting mode : DPS (3 pieces) and DAS (5 pieces).

Piston OTX

Order Code	ØA	ØB	ØS	ØT	ØM	K	Q	L	Peso Weight Kgs.	Price
OTX070030	70	35	54.50	65.00	M30x2.0	9.65	6.30	57	0.45	£POA
OTX080030	80	35	64.50	75.00	M30x2.0	9.65	6.30	57	0.60	£POA
OTX090040	90	45	74.50	85.00	M40x2.0	9.65	6.30	65	0.85	£POA
OTX100040	100	45	79.00	95.00	M40x2.0	9.65	8.10	65	1.35	£POA
OTX120050	120	55	99.00	115.00	M50x2.0	15.00	8.10	85	1.25	£POA
OTX130050	130	55	109.00	125.00	M50x2.0	15.00	8.10	85	1.20	£POA

* Unidades en milímetros.
Units in millimeters.

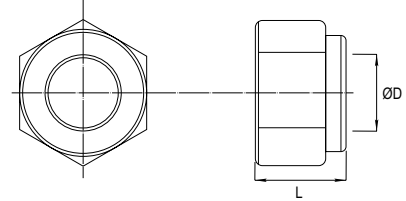


Material en DIN C45 / Material in DIN C45.
Montaje pistón modo : Wynseal (Poliuretano). - Glydring Tf+Bz
Mounting mode : Wynseal (Polyurethane). - Glydring Tf+Bz

Nylon Lock Nut Din985

Order Code	ØD	L	Metrica Metric	Peso Weight Kgs.	Price
TAB014150	14	14	1.50	0.00	£POA
TAB020150	20	20	1.50	0.00	£POA
TAB024200	24	24	2.00	0.00	£POA
TAB030200	30	30	2.00	0.00	£POA
TAB039300	39	39	3.00	0.00	£POA

* Unidades en milímetros.
Units in millimeters.

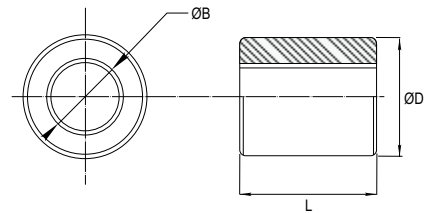


Normativa Din985 / Norm Din985.
Tratamiento zinc-plata / Zinc trivalent treatment.
Acero 8.8 / Steel 8.8.

Threaded Port (female)

Order Code	ØD	ØB	L	Peso Weight Kgs.	Price
RSH02016	20	1/8"	16	0.00	£POA
RSH04016	20	1/4"	16	0.00	£POA
RSH04035	20	1/4"	35	0.00	£POA
RSH08016	25	3/8"	16	0.00	£POA
RSH08040	25	3/8"	40	0.00	£POA
RSH10020	30	1/2"	20	0.00	£POA
RSH10045	30	1/2"	45	0.00	£POA
RSH12020	38	3/4"	20	0.00	£POA

* Unidades en milímetros.
Units in millimeters.

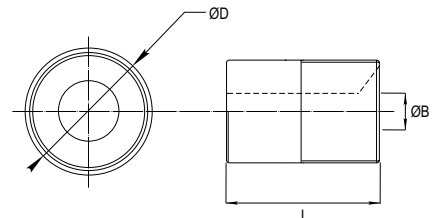


Acero C15 / Steel C15.
Buena soldabilidad / Good weldability.

Threaded Port (male)

Order Code	ØD	ØB	L	Peso Weight Kgs.	Price
RSM02020	1/8"	4.0	20	0.00	£POA
RSM04024	1/4"	6.0	24	0.00	£POA
RSM06024	3/8"	8.0	24	0.00	£POA
RSM08030	1/2"	11.0	30	0.00	£POA
RSM10035	3/4"	14.0	35	0.00	£POA

* Unidades en milímetros.
Units in millimeters.

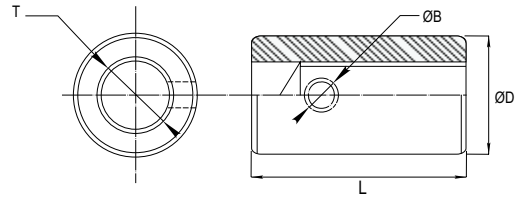


Acero C15 / Steel C15.
Buena soldabilidad / Good weldability.

Threaded Port for Pipe

Order Code	ØD	ØB	T	L	Peso Weight Kgs.	Price
RTH02050	25	12	1/4	50	0.00	£POA
RTH04050	25	12	3/8	50	0.00	£POA
RTH06055	30	15	1/2	55	0.00	£POA

* Unidades en milímetros.
Units in millimeters.

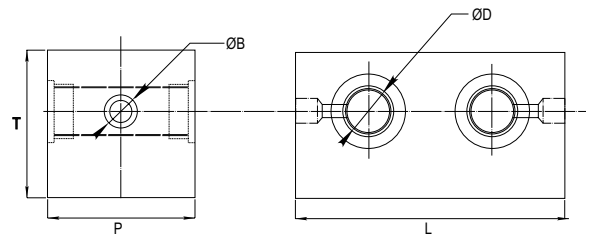


Acero C15 / Steel C15.
Buena soldabilidad / Good weldability.

Double Threaded Port

Order Code	ØD	ØB	T	L	P	Peso Weight Kgs.	Price
RTX02015	1/4"	12	50.00	70	30.00	0.00	£POA
RTX04016	3/8"	14	50.00	80	30.00	0.00	£POA
RTX06016	1/2"	15	60.00	90	40.00	0.00	£POA

* Unidades en milímetros.
Units in millimeters.

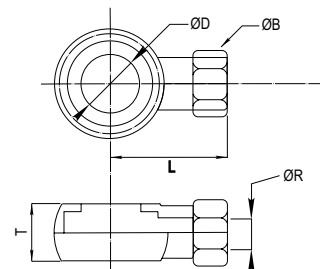


Acero C15 / Steel C15.
Buena soldabilidad / Good weldability.

Standard Banjo

Order Code	ØD	ØB	T	L	ØR	Peso Weight Kgs.	Price
RR02015	1/4"	22	14.50	44	12.00	0.07	£POA
RR04016	3/8"	22	17.00	39	12.00	0.07	£POA
RR06016	1/2"	27	22.00	45	15.00	0.14	£POA

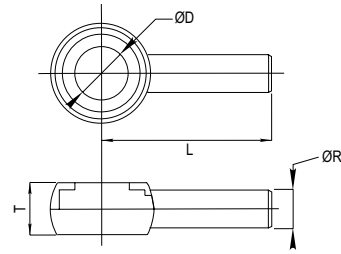
* Unidades en milímetros.
Units in millimeters.
Se suministra con tuerca y bicono / Supplied with nut and bicone.
Acero C15 / Steel C15.



Short Pressing Banjo

Order Code	ØD	ØB	T	L	ØR	Peso Weight Kgs.	Price
RC02015	1/4"	22	14.50	44	12.00	0.04	£POA
RC04016	3/8"	22	17.00	39	12.00	0.05	£POA
RC06016	1/2"	27	22.00	45	15.00	0.09	£POA

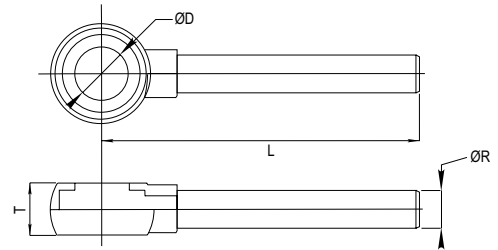
* Unidades en milímetros.
Units in millimeters.



Medium Pressing Banjo

Order Code	ØD	ØB	T	L	ØR	Peso Weight Kgs.	Price
RM02015	1/4"	22	14.50	112	12.00	0.08	£POA
RM04016	3/8"	22	17.00	106	12.00	0.08	£POA
RM06016	1/2"	27	22.00	109	15.00	0.13	£POA

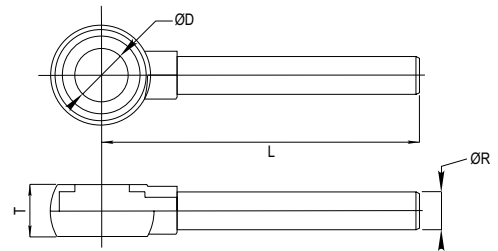
* Unidades en milímetros.
Units in millimeters.



Long Pressing Banjo

Order Code	ØD	ØB	T	L	ØR	Peso Weight Kgs.	Price
RL02015	1/4"	22	14.50	205	12.00	0.11	£POA
RL04016	3/8"	22	17.00	199	12.00	0.11	£POA
RL06016	1/2"	27	22.00	202	15.00	0.18	£POA

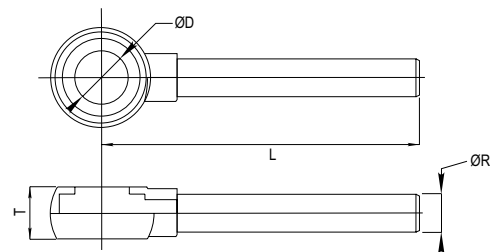
* Unidades en milímetros.
Units in millimeters.



Extra-long Pressing Banjo

Order Code	ØD	ØB	T	L	ØR	Peso Weight Kgs.	Price
RE02015	1/4"	22	14.50	305	12.00	0.15	£POA
RE02020	1/4"	22	14.50	405	12.00	0.19	£POA
RE04016	1/4"	22	14.50	505	12.00	0.23	£POA
RE04020	3/8"	22	17.00	300	12.00	0.15	£POA
RE06016	3/8"	27	17.00	400	12.00	0.18	£POA
RE06020	3/8"	27	17.00	500	12.00	0.22	£POA

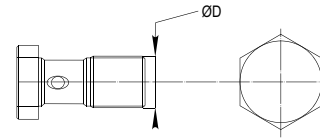
* Unidades en milímetros.
Units in millimeters.



Simple Screw

Order Code	ØD	Peso Weight Kgs.	Price
RK02015	1/4"	0.04	£POA
RK04016	3/8"	0.05	£POA
RK06016	1/2"	0.09	£POA

* Unidades en milímetros.
Units in millimeters.

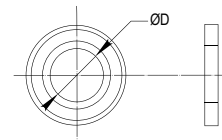


Acero C15 / Steel C15.
Tornillo simple / Single screw.

Metalbuna Washer

Order Code	ØD	Peso Weight Kgs.	Price
RW02015	1/4"	0.08	£POA
RW04016	3/8"	0.08	£POA
RW06016	1/2"	0.13	£POA

* Unidades en milímetros.
Units in millimeters.

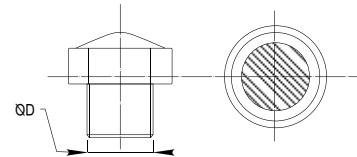


Arandela metalbuna / Metalbuna washer.
Otras medidas bajo pedido / Other measures on request.

Silencer Plug

Order Code	ØD	Peso Weight Kgs.	Price
RD02015	1/4"	0.11	£POA
RD04016	3/8"	0.11	£POA
RD06016	1/2"	0.18	£POA

* Unidades en milímetros.
Units in millimeters.

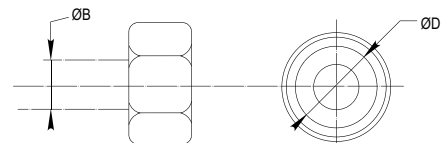


Silenciador de bronce / Bronze silencer plug.
Otras medidas bajo pedido / Other measures on request.

DL Nut Type

Order Code	ØD	ØB	Peso Weight Kgs.	Price
RZ02015	1/4"	10	0.15	£POA
RZ02020	3/8"	12	0.19	£POA
RZ04016	1/2"	22	0.23	£POA

* Unidades en milímetros.
Units in millimeters.



Tuerca tipo DL / DL nut type.
Otras medidas bajo pedido / Other measures on request.

Chrome Bar Ck45

* Unidades en milímetros.
Units in millimeters.

Order Code	Ø	Peso Weight Kg/m	Price
01-000016	16	1.58	£POA
01-000020	20	2.47	£POA
01-000025	25	3.85	£POA
01-000030	30	5.55	£POA
01-000035	35	7.55	£POA
01-000040	40	9.86	£POA
01-000045	45	12.50	£POA
01-000050	50	15.40	£POA
01-000055	55	17.27	£POA
01-000060	60	22.20	£POA
01-000065	65	26.00	£POA
01-000070	70	30.20	£POA
01-000075	75	34.70	£POA

Order Code	Ø	Peso Weight Kg/m	Price
01-000080	80	39.50	£POA
01-000085	85	52.40	£POA
01-000090	90	49.91	£POA
01-000095	95	55.61	£POA
01-000100	100	61.62	£POA
01-000110	110	74.60	£POA
01-000115	115	81.54	£POA
01-000120	120	88.60	£POA
01-000125	125	96.30	£POA
01-000127	127	96.75	£POA
01-000130	130	104.00	£POA
01-000140	140	121.00	£POA
01-000150	150	139.00	£POA

Características técnicas:

*Tolerancia sobre diámetro ISO f7 / h7.
*Espesor de cromo 20 - 25 µ.
*Resistencia a la corrosión:
- 120 h según norma ASTM B117.
*Rugosidad (Ra) 0,2 µ.
*Grado de material Ck45.

Características mecánicas:

*Carga de rotura: 600-700 N/mm².
*Limite elástico: >340 N/mm².
*Alargamiento: 17%.
*Dureza Min. 207 HB.

Technical data :

*Tolerance on diameter ISO f7 / h7.
*Chrome thickness 20 - 25 µ.
*Corrosion resistance:
120 h according to norm ASTM B117.
*Rugosity (Ra) 0,2 µ.
*Material Ck45.

Mechanical characteristics :

*Breaking load: 600-700 N/mm².
*Elastic limit: >340 N/mm².
*Elongation: 17%.
*Hardness Min. 207 HB.

Chrome Bar 42CrMo4

* Unidades en milímetros.
Units in millimeters.

Order Code	Ø	Peso Weight Kg/m	Price
02-000016	16	1.58	£POA
02-000020	20	2.47	£POA
02-000025	25	3.85	£POA
02-000030	30	5.55	£POA
02-000035	35	7.55	£POA
02-000040	40	9.86	£POA
02-000045	45	12.50	£POA
02-000050	50	15.40	£POA
02-000055	55	17.27	£POA
02-000060	60	22.20	£POA
02-000065	65	26.00	£POA
02-000070	70	30.20	£POA
02-000075	75	34.70	£POA

Order Code	Ø	Peso Weight Kg/m	Price
02-000080	80	39.50	£POA
02-000085	85	52.40	£POA
02-000090	90	49.91	£POA
02-000095	95	55.61	£POA
02-000100	100	61.62	£POA
02-000110	110	74.60	£POA
02-000115	115	81.54	£POA
02-000120	120	88.60	£POA
02-000125	125	96.30	£POA
02-000127	127	96.75	£POA
02-000130	130	104.00	£POA
02-000140	140	121.00	£POA
02-000150	150	139.00	£POA

Características técnicas:

*Tolerancia sobre diámetro ISO f7 / h7.
*Espesor de cromo 20 - 25 µ.
*Resistencia a la corrosión:
- 120 h según norma ASTM B117.
*Rugosidad (Ra) 0,2 µ.
*Grado de material 42CrMo4.

Características mecánicas:

*Carga de rotura: 900-1200 N/mm².
*Limite elástico: >650 N/mm².
*Alargamiento: 12%.
*Dureza Min. 241 HB.

Technical data :

*Tolerance on diameter ISO f7 / h7.
*Chrome thickness 20 - 25 µ.
*Corrosion resistance:
120 h according to norm ASTM B117.
*Rugosity (Ra) 0,2 µ.
*Material : 42CrMo4.

Mechanical characteristics :

*Breaking load : 900-1200 N/mm².
*Elastic limit: >650 N/mm².
*Elongation: 12%.
*Hardness Min. 241 HB.

Feed Pipe

* Unidades en milímetros.
Units in millimeters.

Order Code	Ø Exterior Outside	Espesor Thickness mm.	Peso Weight Kg/m	Price
10-100015	10	1.5	0.32	£POA
10-100020	10	2.0	0.40	£POA
10-100025	10	2.5	0.47	£POA
10-120020	12	2.0	0.50	£POA
10-120025	12	2.5	0.59	£POA
10-120030	12	3.0	0.67	£POA
10-140020	14	2.0	0.60	£POA
10-140025	14	2.5	0.71	£POA
10-140030	14	3.0	0.82	£POA

Order Code	Ø Exterior Outside	Espesor Thickness mm.	Peso Weight Kg/m	Price
10-150020	15	2.0	0.65	£POA
10-150025	15	2.5	0.78	£POA
10-150030	15	3.0	0.89	£POA
10-160020	16	2.0	0.70	£POA
10-160025	16	2.5	0.84	£POA
10-160030	16	3.0	0.97	£POA
10-180020	18	2.0	0.79	£POA
10-180025	18	2.5	0.96	£POA
10-180030	18	3.0	1.11	£POA

Características técnicas:

*Calidad de acero St52.
*Acabado BK.
*Según Norma :
DIN2393.

Características mecánicas:

*Carga de rotura : 600-700 N/mm².
*Limite elástico: >650 N/mm².
*Alargamiento: 4%.

Technical data:

*Steel St52.
*Finished BK.
*According to norm :
DIN2391.

Mechanical characteristics:

*Breaking load: 600-700 N/mm².
*Elastic load : >650 N/mm².
*Elongation: 4%.

Seamless Cold-Drawn Tube H8

* Unidades en milímetros.
Units in millimeters.

Order Code	Ø Int.	Ø Ext.	Espesor mm.	Peso Weight Kg/m	Price
11-040050	40	50	5.0	5.55	£POA
11-050060	50	60	5.0	6.78	£POA
11-050065	50	65	7.5	10.65	£POA
11-060070	60	70	5.0	8.05	£POA
11-060075	60	75	7.5	12.48	£POA
11-070080	70	80	5.0	9.25	£POA
11-070085	70	85	7.5	14.35	£POA
11-080090	80	90	5.0	10.50	£POA
11-080095	80	95	7.5	16.18	£POA
11-090100	90	100	5.0	11.71	£POA
11-090105	90	105	7.5	18.05	£POA
11-090110	90	110	10.0	24.70	£POA
11-100115	100	115	7.5	19.88	£POA

Order Code	Ø Int.	Ø Ext.	Espesor mm.	Peso Weight Kg/m	Price
11-120140	120	140	10.0	32.10	£POA
11-130150	130	150	10.0	34.55	£POA
11-130160	130	160	15.0	53.65	£POA
11-140160	140	160	10.0	37.00	£POA
11-140170	140	170	15.0	57.35	£POA
11-150170	150	170	10.0	39.50	£POA
11-150180	150	180	15.0	61.05	£POA
11-160180	160	180	10.0	41.95	£POA
11-160190	160	190	15.0	64.75	£POA
11-180200	180	200	10.0	46.90	£POA
11-180210	180	210	15.0	74.15	£POA
11-200220	200	230	15.0	79.55	£POA
11-250300	250	300	25.0	169.55	£POA

Características técnicas: *Material St52. Tol. h8. *Acabado BK+S. *Según Norma : DIN2391 / EN10305-1.	Características mecánicas: *Carga de rotura : >570 N/mm ² . *Limite elástico : >470 N/mm ² . *Alargamiento: 14%. *Rugosidad (Ra) 0.2 µ.
--	--

Technical data: *Steel St52. Tol. h8. *Finished BK+S. *According to norm : DIN2391 / EN10305-1.	Mechanical characteristics: *Breaking load : >570 N/mm ² . *Elastic load : >470 N/mm ² . *Elongation: 14%. *Rugosity (Ra) 0.2 µ.
--	---

Welded Cold-Drawn Tube H9

* Unidades en milímetros.
Units in millimeters.

Order Code	Ø Int.	Ø Ext.	Espesor mm.	Peso Weight Kg/m	Price
12-032040	32	40	4.0	3.55	£POA
12-035045	35	45	5.0	4.95	£POA
12-040050	40	50	5.0	5.55	£POA
12-045055	45	55	5.0	6.17	£POA
12-050060	50	60	5.0	6.78	£POA
12-055065	55	65	5.0	7.40	£POA
12-060070	60	70	5.0	8.01	£POA
12-060075	60	75	7.5	12.50	£POA
12-065075	65	75	5.0	8.63	£POA
12-070080	70	80	5.0	9.25	£POA
12-070085	70	85	7.5	14.30	£POA
12-080090	80	90	5.0	10.50	£POA
12-080095	80	95	7.5	16.20	£POA

Order Code	Ø Int.	Ø Ext.	Espesor mm.	Peso Weight Kg/m	Price
12-032040	32	40	4.0	3.55	£POA
12-035045	35	45	5.0	4.95	£POA
12-040050	40	50	5.0	5.55	£POA
12-045055	45	55	5.0	6.17	£POA
12-050060	50	60	5.0	6.78	£POA
12-055065	55	65	5.0	7.40	£POA
12-060070	60	70	5.0	8.01	£POA
12-060075	60	75	7.5	12.50	£POA
12-065075	65	75	5.0	8.63	£POA
12-070080	70	80	5.0	9.25	£POA
12-070085	70	85	7.5	14.30	£POA
12-080090	80	90	5.0	10.50	£POA
12-080095	80	95	7.5	16.20	£POA

Características técnicas: *Material St52. Tol. h9. *Acabado BK. *Según Norma : DIN2393.	Características mecánicas: *Carga de rotura : >630 N/mm ² . *Limite elástico : >540 N/mm ² . *Alargamiento: 7%. *Rugosidad (Ra) 0.4 - 0.6 µ.
--	---

Technical data: *Steel St52. Tol. h9. *Finished BK. *According to norm : DIN2393.	Mechanical characteristics: *Breaking load : >630 N/mm ² . *Elastic load : >540 N/mm ² . *Elongation: 7%. *Rugosity (Ra) 0.4 - 0.6 µ.
--	--

Chromed Cold-Drawn Tube H9

* Unidades en milímetros.
Units in millimeters.

Order Code	Ø Int.	Ø Ext.	Espesor mm.	Peso Weight Kg/m	Price
13-032040	32	40	4.0	3.55	£POA
13-035045	35	45	5.0	4.95	£POA
13-040050	40	50	5.0	5.55	£POA
13-045055	45	55	5.0	6.17	£POA
13-050060	50	60	5.0	6.78	£POA
13-055065	55	65	5.0	7.40	£POA
13-060070	60	70	5.0	8.01	£POA
13-060075	60	75	7.5	12.50	£POA
13-065075	65	75	5.0	8.63	£POA

Order Code	Ø Int.	Ø Ext.	Espesor mm.	Peso Weight Kg/m	Price
13-032040	32	40	4.0	3.55	£POA
13-035045	35	45	5.0	4.95	£POA
13-040050	40	50	5.0	5.55	£POA
13-045055	45	55	5.0	6.17	£POA
13-050060	50	60	5.0	6.78	£POA
13-055065	55	65	5.0	7.40	£POA
13-060070	60	70	5.0	8.01	£POA
13-060075	60	75	7.5	12.50	£POA
13-065075	65	75	5.0	8.63	£POA

Características técnicas: *Material St52. Tol. h9. *Acabado BK. *Según Norma : DIN2393.	Características mecánicas: *Carga de rotura : >630 N/mm ² . *Limite elástico : >540 N/mm ² . *Alargamiento: 7%. *Cromado 25 - 30 micras.
--	---

Technical data: *Steel St52. Tol. h9. *Finished BK. *According to norm : DIN2393.	Mechanical characteristics: *Breaking load : >630 N/mm ² . *Elastic load : >540 N/mm ² . *Elongation: 7%. *Chromed 25 - 30 microns.
--	--

Operated Check Valve

Order Code	D	B	T	L	Peso Weight Kg	Price
VADP004EX	1/4"	64	36.00	134	0.65	£POA
VADP008EX	3/8"	64	36.00	134	0.63	£38.16

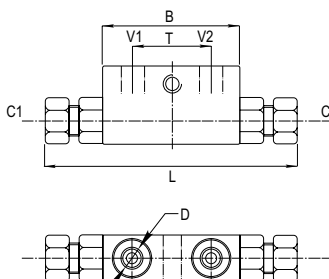
Presión máxima / Max. pressure : 350 bar.

Aplicación :

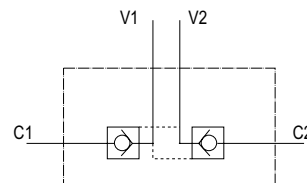
Las válvulas VADP son usadas para bloquear cilindros de doble efecto.

Application :

VADP valves are used to lock double acting hydraulic cylinders.



Esquema hidráulico
Hydraulic diagram



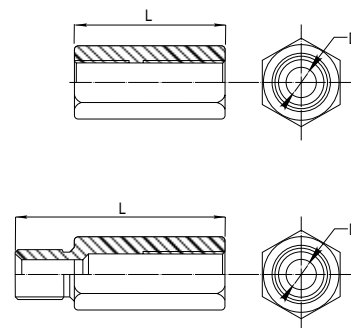
Cuerpo : Acero bicromatado
Body : Zinc plated steel.
Apertura muelle : 4.0 bar.
Open spring: 4.0 bar.

VP Valve Adapter

Order Code	ØD	L	Peso Weight Kg	Price
RVP004	1/4"	50	0.15	£POA
RVP006	3/8"	59	0.20	£POA
RVP008	1/2"	65	0.30	£POA

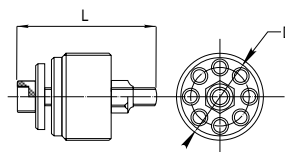
Order Code	ØD	L	Peso Weight Kg	Price
RVS004	1/4"	50	0.15	£POA
RVS006	3/8"	59	0.20	£POA
RVS008	1/2"	65	0.30	£POA

Cuerpo : Acero bicromatado
Body : Zinc plated steel.

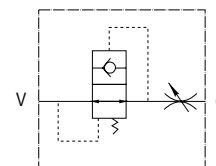


Burst Valve

Order Code	ØD	L	Peso Weight Kg	Price
VP004	1/4	23	0.15	£POA
VP006	3/8	23	0.20	£POA
VP008	1/2	34	0.30	£POA



Esquema hidráulico
Hydraulic diagram



Cuerpo : Acero pavonado.
Body : Blued steel.

Plough Overturning Valve

Order Code	D	P	T	L	C1 / C2 Ø	Peso Weight Kg	Price
VSEB03800	30	3/8"	3/8"	142	12.00	1.99	£278.88
VSEB03802	30	3/8"	3/8"	142	12.00	1.99	£316.15

Presión máxima / Max. pressure : 400 bar.

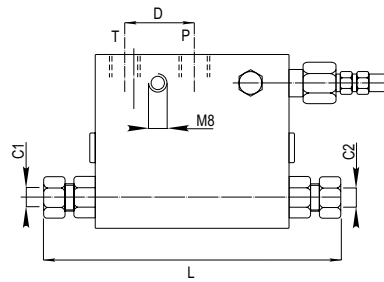
Aplicación :

Las válvulas VSEB son usadas para voltear cilindros de simple y doble efecto.

Application :

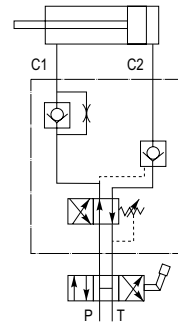
VSEB valves are used to turning plough in double and single acting cylinders.

Inversión a / Inversion to : 140 bar.



Cuerpo : Acero bicromatado
Body : Zinc plated steel.

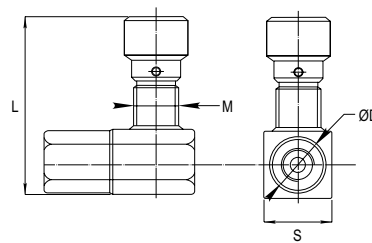
Esquema hidráulico
Hydraulic diagram



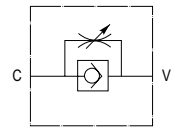
90° Flow Regulator Valve

Order Code	ØD	S	M	L	Caudal máx. Max. flow Lt./min.	Presión máx. Max. pressure Bar	Peso Weight Kg	Price
VRU04002	1/4"	25	M22x1.5	82	15.0	350	0.37	£77.22
VRU04004	3/8"	25	M22x1.5	82	30.0	350	0.36	£78.71
VRU04006	1/2"	30	M22x1.5	87	50.0	350	0.47	£95.21
VRU04008	3/4"	40	M35x1.5	108	80.0	280	1.10	£169.31
VRU04010	1"	40	M35x1.5	129	80.0	250	1.00	£POA

* Regulación: Unidireccional.
Regulation: One way.



Esquema hidráulico
Hydraulic diagram

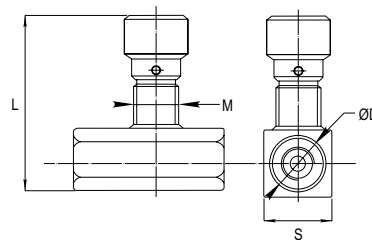


Cuerpo : Acero bicromatado
Body : Zinc plated steel.

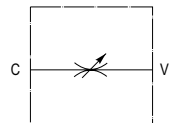
90° Flow Regulator Valve

Order Code	ØD	S	M	L	Caudal máx. Max. flow Lt./min.	Presión máx. Max. pressure Bar	Peso Weight Kg	Price
VRB04002	1/4"	25	M22x1.5	82	15.0	350	0.42	£69.51
VRB04004	3/8"	25	M22x1.5	82	30.0	350	0.42	£70.98
VRB04006	1/2"	30	M22x1.5	87	50.0	350	0.59	£83.92
VRB04008	3/4"	40	M35x1.5	108	80.0	280	1.36	£158.42
VRB04010	1"	40	M35x1.5	129	80.0	250	1.39	£POA

* Regulación: Bidireccional.
Regulation: Two ways.



Esquema hidráulico
Hydraulic diagram



Cuerpo : Acero bicromatado
Body : Zinc plated steel.

*Apertura: 0.5 bar.
Cracking pressure: 0.5 bar.

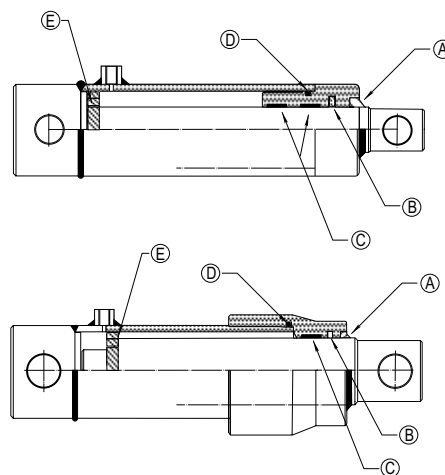
100 Series Seals Kit

Order Code	Ø Vástago Ø Rod	Ø Tubo Ø Tube	Price
KJSE032040025	25	32/40	£POA
KJSE040050030	30	40/50	£POA
KJSE045055035	35	45/55	£POA
KJSE050060040	40	50/60	£POA
KJSE050060045	45	50/60	£POA
KJSE055065050	50	55/65	£POA
KJSE060070055	55	60/70	£POA
KJSE065075060	60	65/75	£POA
KJSE065075060	60	65/75	£POA
KJSE080090070	70	80/90	£POA
KJSE100115090	90	100/115	£POA

* Otras medidas bajo consulta.
Other measures on request.

Kit de juntas / Oil seal kit

- A Rascador metálico / Metal wiper.
- B Collarín poliuretano / Polyurethane rod seal.
- C Guías resina acetil / Acetal resin guides.
- D Junta tórica 90 shores / O-ring 90 shores.
- E Tuerca KM / KM nut.

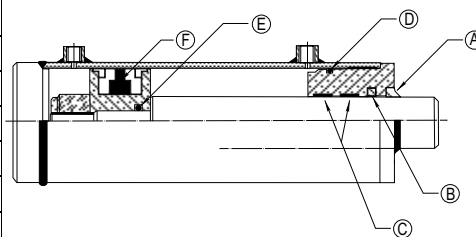


200 Series Seals Kit

Order Code	Ø Vástago Ø Rod	Ø Tubo Ø Tube	Price
KJDE032040020	20	32/40	£15.93
KJDE040050020	20	40/50	£20.52
KJDE040050025	25	40/50	£20.64
KJDE050060025	25	50/60	£21.15
KJDE050060030	30	50/60	£26.24
KJDE050060035	35	50/60	£POA
KJDE060070030	30	60/70	£28.75
KJDE060070035	35	60/70	£27.71
KJDE060070040	40	60/70	£24.32
KJDE070080035	35	70/80	£POA
KJDE070080040	40	70/80	£26.17
KJDE070080045	45	70/80	£27.75
KJDE070080050	50	70/80	£28.28
KJDE080090035	35	80/90	£33.04
KJDE080090040	40	80/90	£29.61

* Otras medidas bajo consulta.
Other measures on request.

Order Code	Ø Vástago Ø Rod	Ø Tubo Ø Tube	Price
KJDE080090045	45	80/90	£30.23
KJDE080090050	50	80/90	£31.83
KJDE090100040	40	90/100	£37.38
KJDE090100045	45	90/100	£39.22
KJDE090100050	50	90/100	£45.32
KJDE090100060	60	90/100	£POA
KJDE100115050	50	100/115	£42.06
KJDE100115060	60	100/115	£45.90
KJDE100115070	70	100/115	£47.11
KJDE120140060	60	120/140	£POA
KJDE120140070	70	120/140	£48.37
KJDE120140080	80	120/140	£56.73
KJDE130150070	70	130/150	£POA
KJDE130150080	80	130/150	£60.92
KJDE130150090	90	130/150	£POA



Kit de juntas / Oil seal kit

- A Rascador metálico / Metal wiper.
- B Collarín poliuretano / Polyurethane rod seal.
- C Guías resina acetil / Acetal resin guides.
- D Junta tórica 90 shores / O-ring 90 shores.
- E Junta tórica 90 shores / O-ring 90 shores.
- F Junta Pistón DBM / DBM piston seal.