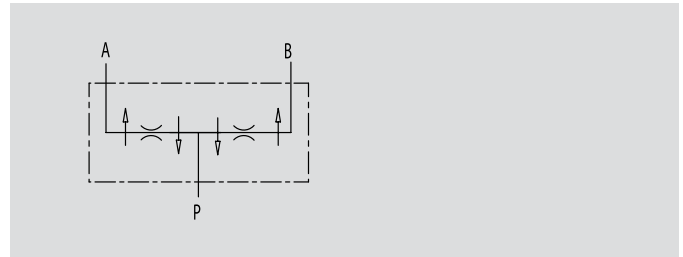


2 Ways Steel Flow Divider

TIPO / TYPE
DFL

SCHEMA IDRAULICO
HYDRAULIC DIAGRAM



2 WAYS STEEL FLOW DIVIDER

USE AND OPERATION:

These valves allow the division of inlet flow into two equal parts (50/50) and they unify it in the reverse direction irrespective of any pressure differences and flow. These valves are used when two equal actuators, that are not mechanically coupled, supplied by the same pump and controlled by a single distributor, must move simultaneously both at input and output.

MATERIALS AND FEATURES:

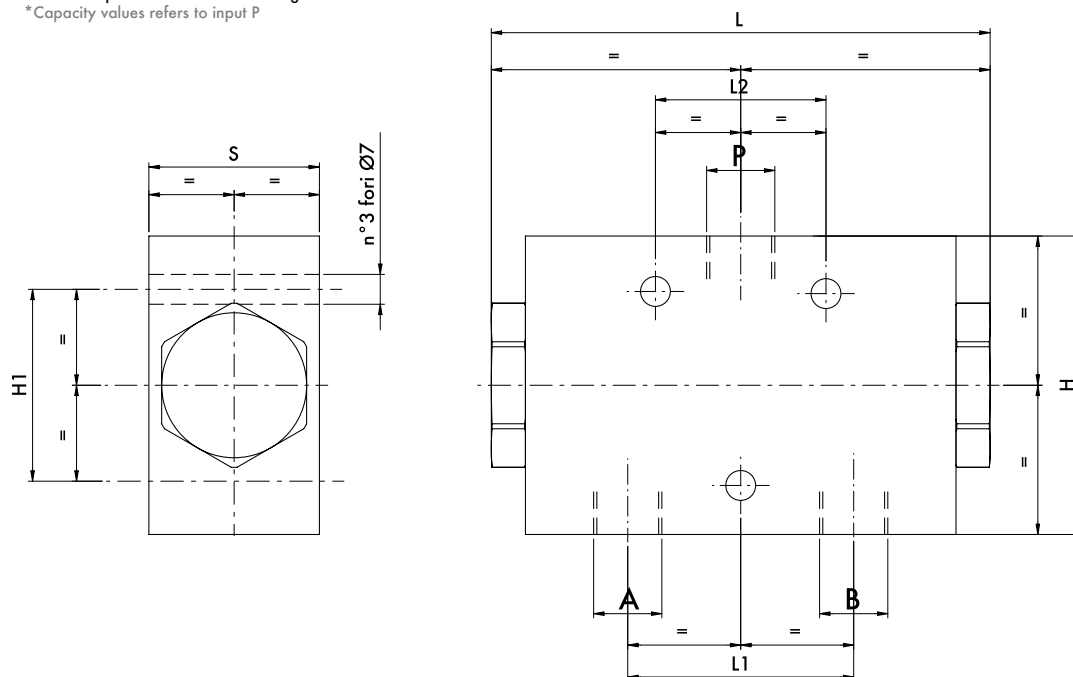
Body: zinc-plated steel
Internal parts: hardened and ground steel
Seals: BUNA N standard and Teflon
Tightness: by diameter combination. Minor leakage
Cylinder stroke error tolerance of $\pm 3\%$ Any synchronisation differences are compensated by the terminal position of the stroke.

APPLICATIONS:

Connect P to pressure flow and A and B to the actuators.

CODICE CODE	SIGLA TYPE	PORTATA MIN* MIN FLOW Lt. / min	PORTATA MAX* MAX FLOW Lt. / min	PRESS. ESERCIZIO WORKING PRESSURE Bar	PICCO DI PRESSIONE PEAK PRESSURE Bar
SFD0610	DFL 6 - 10	6	10	250	300
SFD0620	DFL 10 - 20	10	20	250	300
SFD0840	DFL 25 - 40	25	40	250	300
SFD0860	DFL 40 - 60	40	60	250	300

*I valori di portata si riferiscono all'ingresso P
*Capacity values refers to input P



CODICE CODE	SIGLA TYPE	P GAS	A - B GAS	L mm	L1 mm	L2 mm	H mm	H1 mm	S mm	PESO WEIGHT Kg.
SFD0610	DFL 6 - 10	G 3/8"	G 3/8"	117	53	40	70	45	40	2,000
SFD0620	DFL 10 - 20	G 3/8"	G 3/8"	117	53	40	70	45	40	2,000
SFD0840	DFL 25 - 40	G 1/2"	G 3/8"	117	53	40	70	45	40	2,000
SFD0860	DFL 40 - 60	G 1/2"	G 3/8"	117	53	40	70	45	40	2,000