

RACCORDI VARI PER MONTAGGIO VARIOUS VALVE MOUNTING FITTINGS

TIPO / TYPE
VF



TIPO / TYPE
NDO



TIPO / TYPE
ND



TIPO / TYPE
NDG



IMPIEGO:

Raccordi per il montaggio delle valvole.

MATERIALI E CARATTERISTICHE:

Materiale: acciaio zincato

USE AND OPERATION:

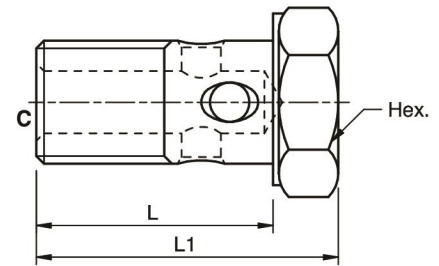
Fittings for valve mounting.

MATERIALS AND FEATURES:

Material: zinc-plated steel

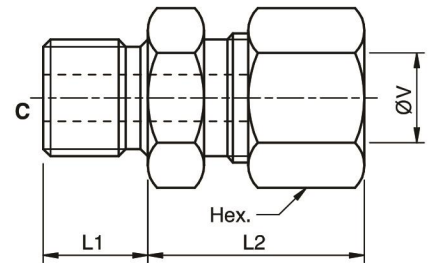
VITE FORATA - HOLED SCREW

CODICE CODE	SIGLA TYPE	COPPIA DI SERRAGGIO CLOSING COUPLE		L mm	L1 mm	HEX mm	PESO WEIGHT Kg.
		Nm	C GAS-MET				
R1350	VF 1/4"	45	G 1/4"	28	34	19	0,04
R1360	VF 3/8"	70	G 3/8"	31	39	22	0,05
R1370	VF 1/2"	85	G 1/2"	38	46	27	0,08
R1380	VF 18	75	M18X1,5	36	44	24	0,06



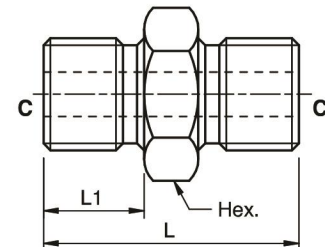
NIPPLO CON DADO E OGIVA - NIPPLE WITH NUT AND OLIVE

CODICE CODE	SIGLA TYPE	C GAS	ØV mm	L1 mm	L2 mm	HEX mm	PESO WEIGHT Kg.
R1110	NDO 3/8"X12L	G3/8"	12	13	28	22	0,06
R1130	NDO 1/2"X12L	G1/2"	12	13	32	22	0,10
R1140	NDO 1/2"X15L	G1/2"	15	13	34	27	0,12



NIPPLO DOPPIO - DOUBLE NIPPLE

CODICE CODE	SIGLA TYPE	C GAS	L mm	L1 mm	HEX mm	PESO WEIGHT Kg.
R1115	ND 3/8"X 3/8	G3/8"	33	13	22	0,05
R1135	ND 1/2"X 1/2	G1/2"	38	15	27	0,07



NIPPLO CON DADO A GIRELLO - NIPPLE WITH ROTARY NUT

CODICE CODE	SIGLA TYPE	CV GAS	L1 mm	L2 mm	HEX mm	PESO WEIGHT Kg.
R1144	NDG 1/2"	G 1/2"	14	37	27	0,07
R1146	NDG 3/4"	G 3/4"	16	52	32	0,11

