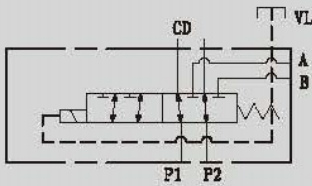


SDV.06.6

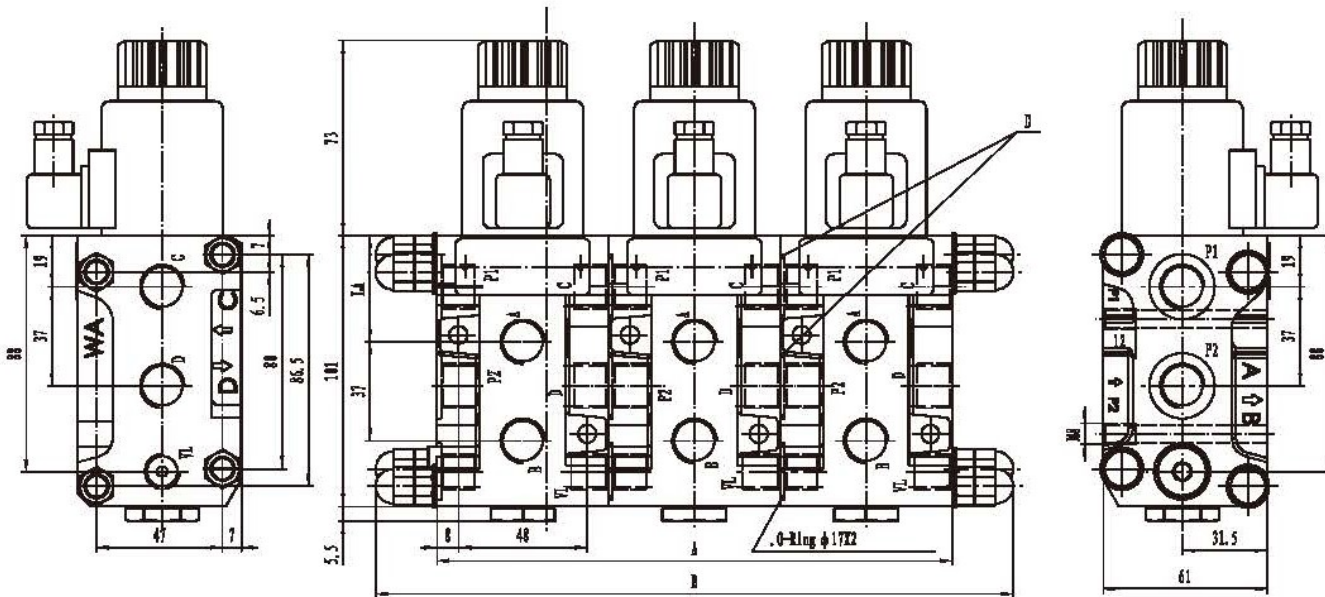
SDV.06.6 FLOW DIVERTERS

The stackable circuit selector valves, type MOP.06.6, allows one single drive of 6 users with 5 elements connected in series. As they are moved from high performances solenoids they don't need the external drainage.

This valves can manage high hydraulic powers with a minimal pressure drop.



Model	SDV.06.6
Max Flow rate (L/min)	50
Max operating pressure (BAR)	250



LA=39.5(G3/8,M18X1.5)
38.5(SAE8)
37.5(G1/2,M22X1.5)

/ D.O-Ring: M18X1.5/
G3/8=Φ21X2 M22X1.5/
G1/2=Φ23.5X2 SAE8=Φ
26X2

elements	way	A	B
↑ No. of		(mm) Lengths (mm)	
1	6	64	-
2	8	128	174
3	10	192	238
4	12	256	302
5	14	320	366

