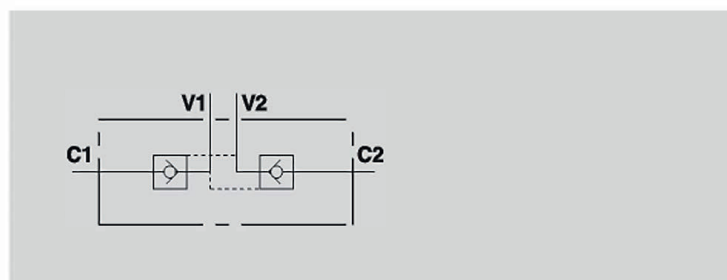
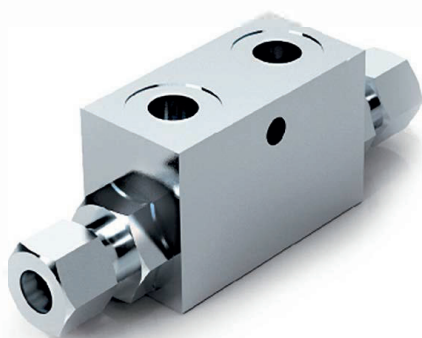


VALVOLE DI BLOCCO PILOTATE A DOPPIO EFFETTO CON 2 CARTUCCE EXTRACORTE (DIN 2353) DOUBLE PILOT OPERATED CHECK VALVES FOR 12mm PIPE MOUNTING (DIN 2353)

TIPO / TYPE
VBPDE 2 CEXC

SCHEMA IDRAULICO
HYDRAULIC DIAGRAM



IMPIEGO:

Valvola utilizzata per bloccare in posizione un cilindro in entrambi i sensi, consentendo il flusso in una direzione ed impedendolo in senso contrario fino a quando non viene applicata la pressione di pilotaggio. Questa valvola risulta particolarmente adatta per il montaggio su cilindro. A richiesta si fornisce kit di raccordi a misura per il montaggio ad interasse definito.

MATERIALI E CARATTERISTICHE:

Corpo: acciaio zincato.
Componenti interni: acciaio temprato termicamente e rettificato.
Guarnizioni: BUNA N standard.
Tenuta: a cono guidato. Trafilamento trascurabile.

MONTAGGIO:

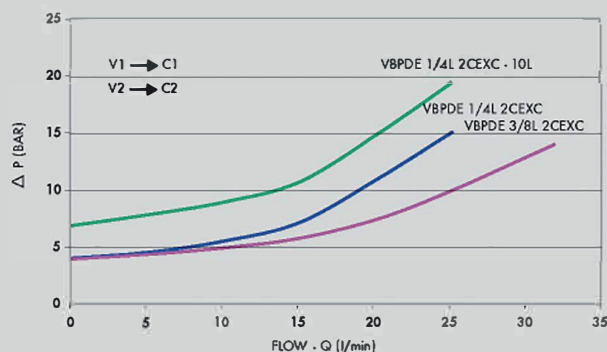
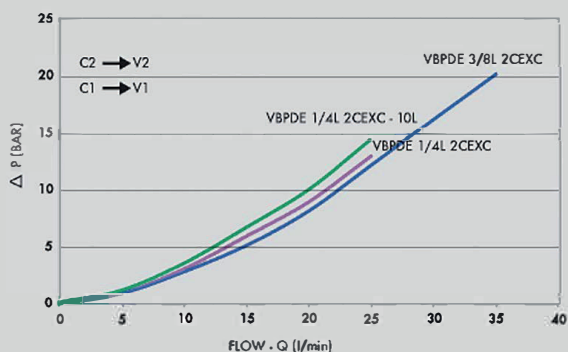
Collegare V1 e V2 all'alimentazione e C1 e C2 all'attuatore attraverso appositi raccordi a occhio.

A RICHIESTA

- senza guarnizione OR sul pilota
- molla 1 Bar
- molla 8 Bar

PERDITE DI CARICO

PRESSURE DROP CURVE



USE AND OPERATION:

Pilot check valves are used to block the actuator in both directions. Flow is free in one direction and blocked in the reverse direction until pilot pressure is applied. They are easily assembled on a cylinder. We supply on request fitting kits for mounting on cylinders with a specific centre distance.

MATERIALS AND FEATURES:

Body: zinc-plated steel.
Internal parts: hardened and ground steel.
Seals: BUNA N standard.
Leakage: Guided poppet - negligible leakage

CONNECTIONS:

Connect V1 and V2 to the supply and C1 and C2 to the actuator with the pipe.

ON REQUEST

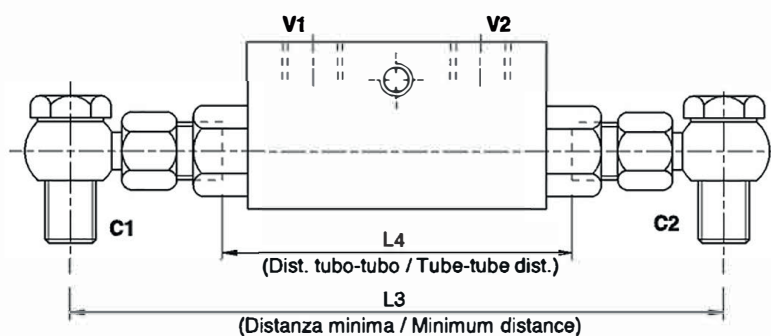
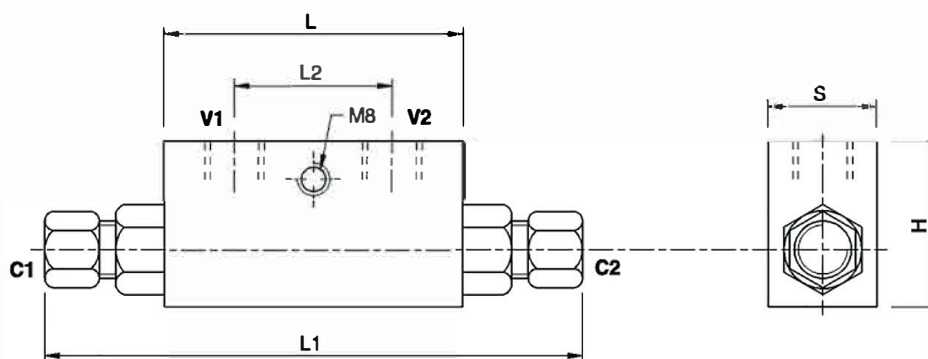
- without seal on pilot piston
- 1 Bar spring
- 8 Bar spring

Temperatura olio: 50°C - Viscosità olio: 30 cSt

Oil temperature: 50°C - Oil viscosity: 30 cSt



CODICE CODE	SIGLA TYPE	RAPP. PILOT PILOT RATIO	PORTATA MAX MAX FLOW l. / min	PRESSIONE MAX MAX PRESSURE Bar	PRESSIONE APERTURA CRACKING PRESSURE Bar
V0091	VBPDE 1/4" L 2 CEXC - 10L	1:5,5	20	350	7
V0090	VBPDE 1/4" L 2 CEXC	1:5,5	20	350	4
V0110	VBPDE 3/8" L 2 CEXC	1:5,5	30	350	4



CODICE CODE	SIGLA TYPE	V1 - V2 GAS	C1 - C2 mm	L mm	L1 mm	L2 mm	L3 mm	L4 mm	H mm	S kg	PESO WEIGHT kg
V0091	VBPDE 1/4" L 2 CEXC - 10L	G 1/4"	10L	64	125	36	160	82	40	30	0,644
V0090	VBPDE 1/4" L 2 CEXC	G 1/4"	12L	64	130	36	160	84	40	30	0,648
V0110	VBPDE 3/8" L 2 CEXC	G 3/8"	12L	64	130	36	166	84	40	30	0,630

Attacchi DIN 2353 Fittings to DIN 2353