



Vertical Engines

Single Cylinder/V-Twin

PROFESSIONAL COMPLETE POWER PRODUCT

Loncin is the only manufacturer that is able to provide full range of engines with horizontal shaft and vertical shaft in China, of which the vertical shaft power products cover 140-803cc.. It provides global customers with comprehensive general power solutions and serves as a supplier of professional low-carbon complete power product and service.

FIRST CHOICE OF GENERAL PURPOSE ENGINE

Loncin has provided world-renowned brands-GGP, E-Mark, Toro and Rover with millions of excellent power products continuously. They are widely used for hand-push lawn mower, lawn vehicle, generator, high voltage cleaning machine, mini-tiller and other machinery.

LARGE VERTICAL SHAFT SERIES

Optimized balance system enables more stable operation. Polar oil filter system lubricates engine sufficiently and extends the engine service life. Cast iron cylinder sleeves, metal cams, forged crankshafts make the engine more durable.

LC1P70F-3

Output : 5.3hp / 5kW

LC1P92F-15

Output : 14hp / 9.5kW

LC2P80F5

Output : 19.3hp / 14.4kW

AFTER-SALE QUALITY ASSURANCE

The products are easy to be started, powerful, durable and reliable, meeting environmental standards and provided with comprehensive after-sales service.

SMALL VERTICAL SHAFT SERIES

Loncin is excellent supplier of precise spare parts. This series product is featured with easy to be started, simple operation, strong power and compliance with environmental standards.

DOUBLE-CYLINDER VERTICAL SHAFT

The balanced design of dynamic crankshaft reduces vibration. Press-type machine oil pump can improve the engine lubrication to extend engine service life; fan with high flow can reduce the engine temperature. The cobalt alloy surfacing technology is used for hard alloy intake and exhaust valves to make the engine more wear-resisting.



LC1P70F-3

- 5.3 / 4.0 @ 2500 r/min
- 196 cc
- L384 x W341 x H250 mm
- 12.8 kg net weight



LC1P92F-15

- 14 / 9.5 @ 2600 r/min
- 452 cc
- L432 x W388 x H300 mm
- 31 kg net weight

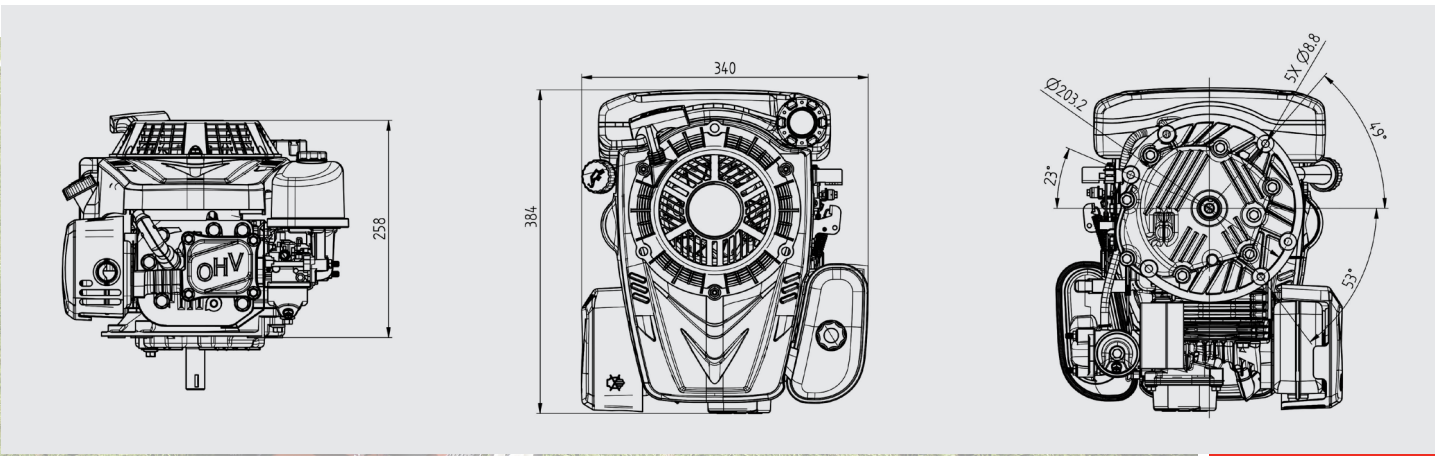


LC2P80F5

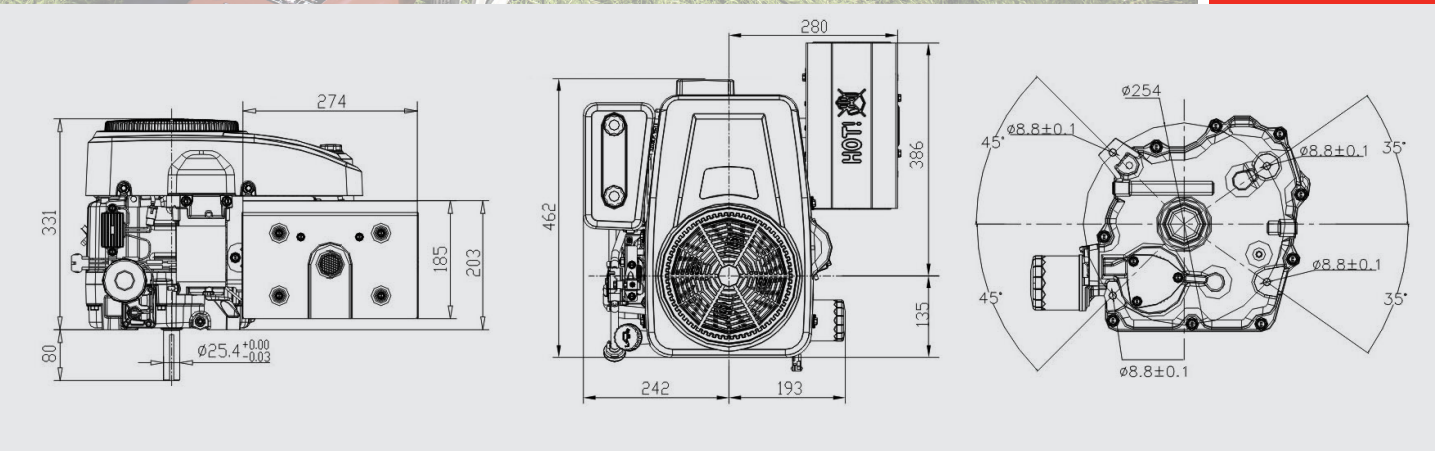
- 19.3 / 14.4 @ 3600 r/min
- 764 cc
- L466 x W480 x H356 mm
- 42 kg net weight

Engine Model	LC1P70F-3	LC1P92F-15	LC2P80F5
Engine Type	Single cylinder, 4-stroke, OHV, forced air cooling		V-Twin, 4-stroke, OHV, forced air cooling
Net Power (hp / kW)	5.3 / 4.0 @ 2500 r/min	14 / 9.5 @ 2600 r/min	19.3 / 14.4 @ 2400 r/min
Gross Power (hp / kW)	? / ? @ 2500 r/min	? / ? @ 63600 r/min	? / ? @ 2400 r/min
Net Torque (Nm)	12 @ 2500 r/min	27 @ 2800 r/min	52 @ 2400 r/min
Bore x Stroke (mm)	70 x 50.84	92 x 68	80 x 76
Displacement (cc)	196	452	764
Oil Capacity (L)	0.5	1.2	2.4
Starting System	Recoil / Electric	Electric	Electric
Dimensions (L x W x H mm)	384 x 341 x 258	432 x 388 x 300	466 x 480 x 356
Net Weight (kg)	12.8	31	42
Shaft Options	All shaft options on page 29		

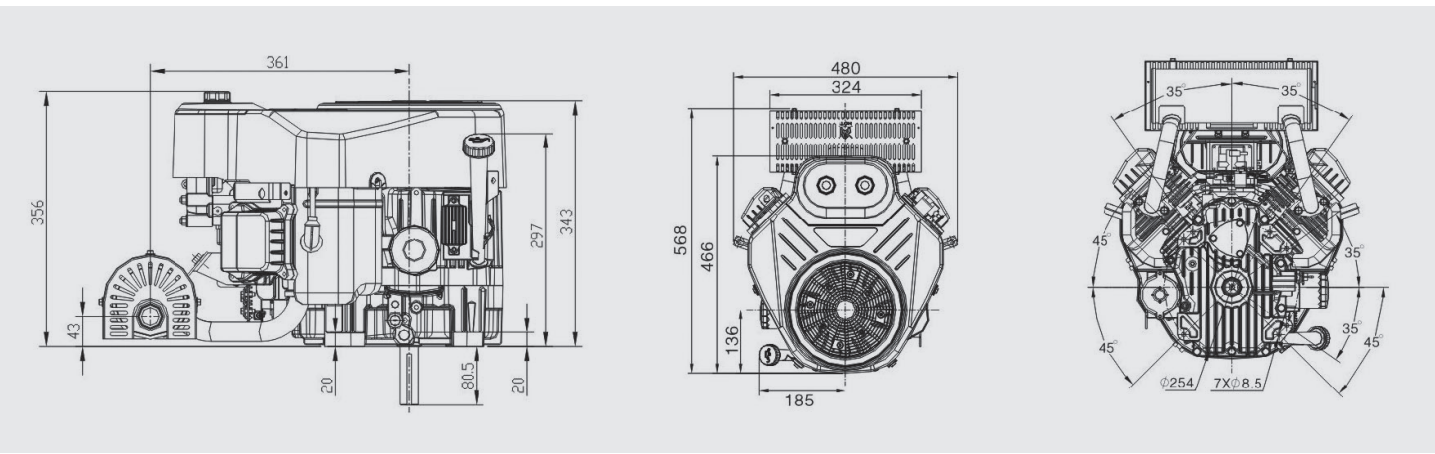
LC1P70F-3



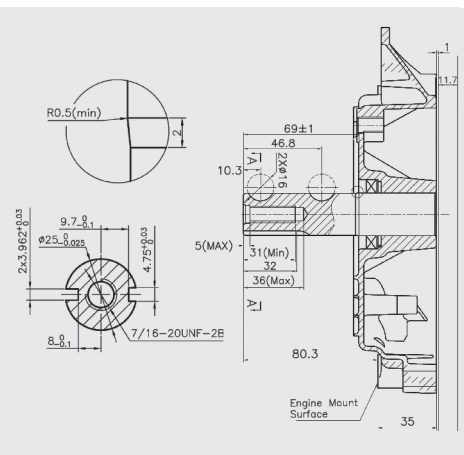
LC1P92F-15



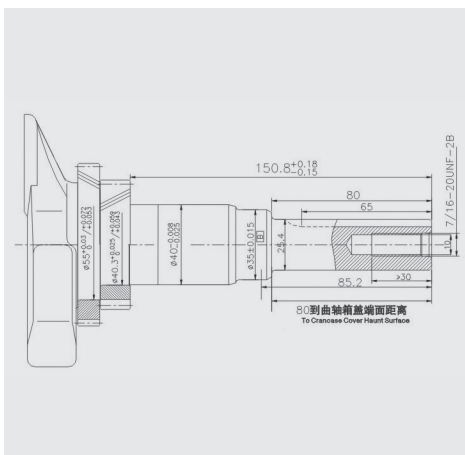
LC2P80F5



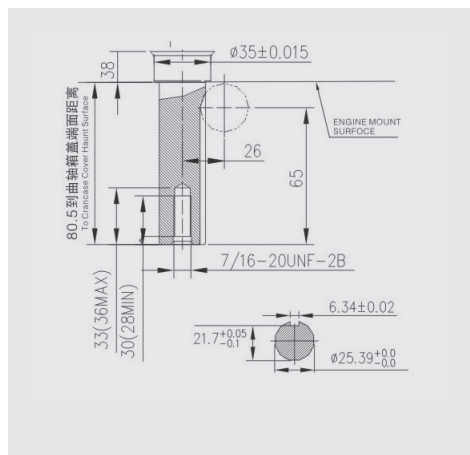
LC1P70F-3



LC1P92F-15



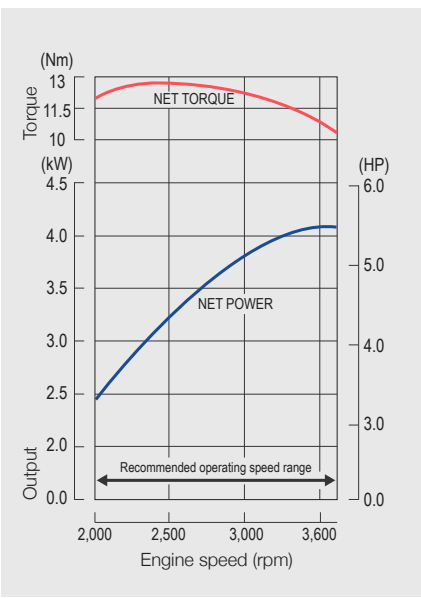
LC2P80F5



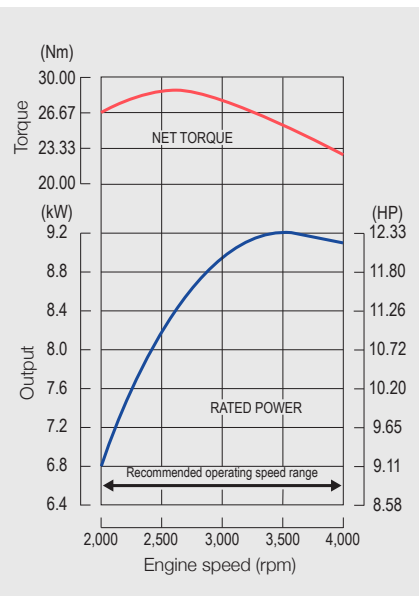
Vertical Engines

Curves / Dimensions / Shafts

LC1P70F-3



LC1P92F-15



LC2P80F5

