



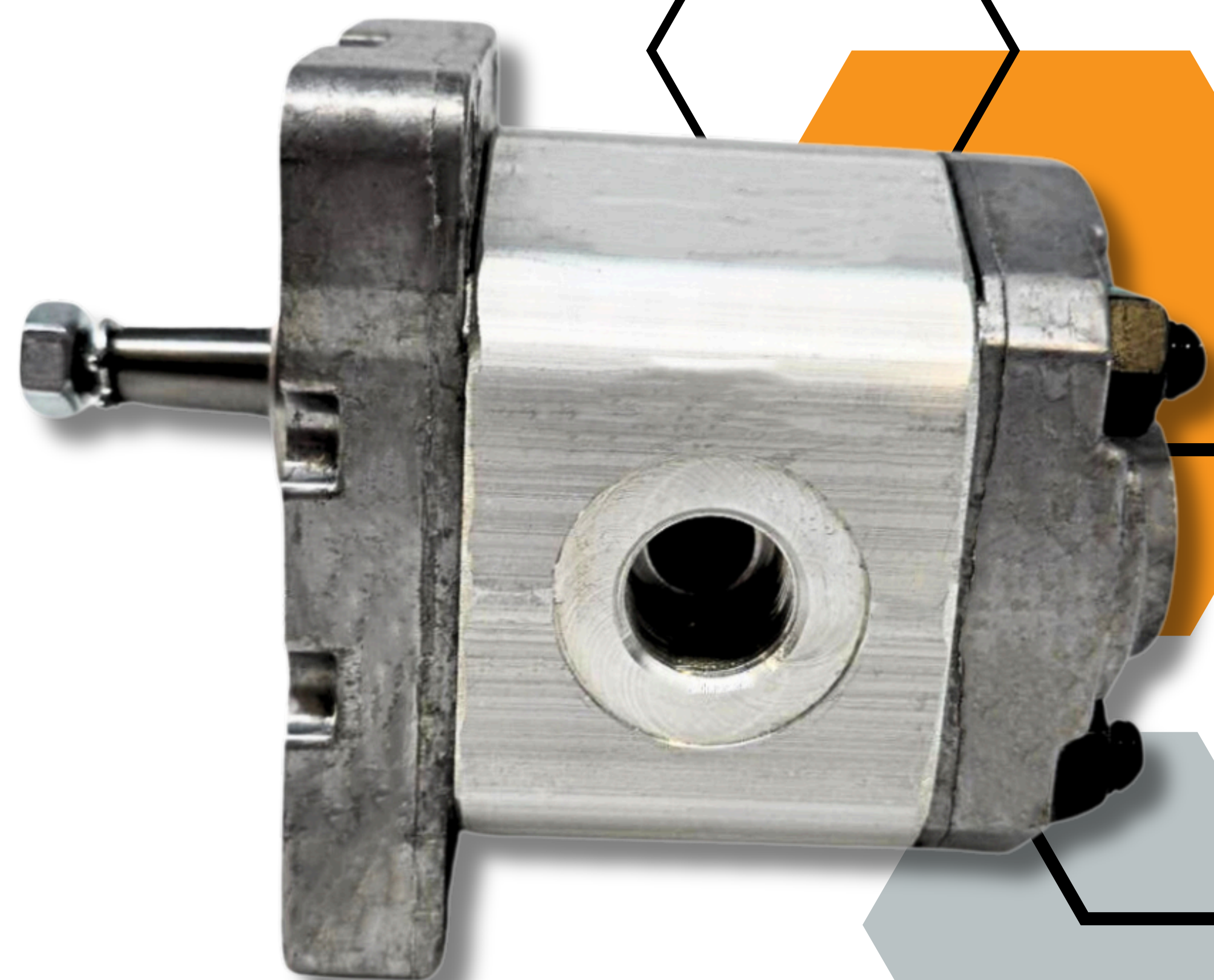
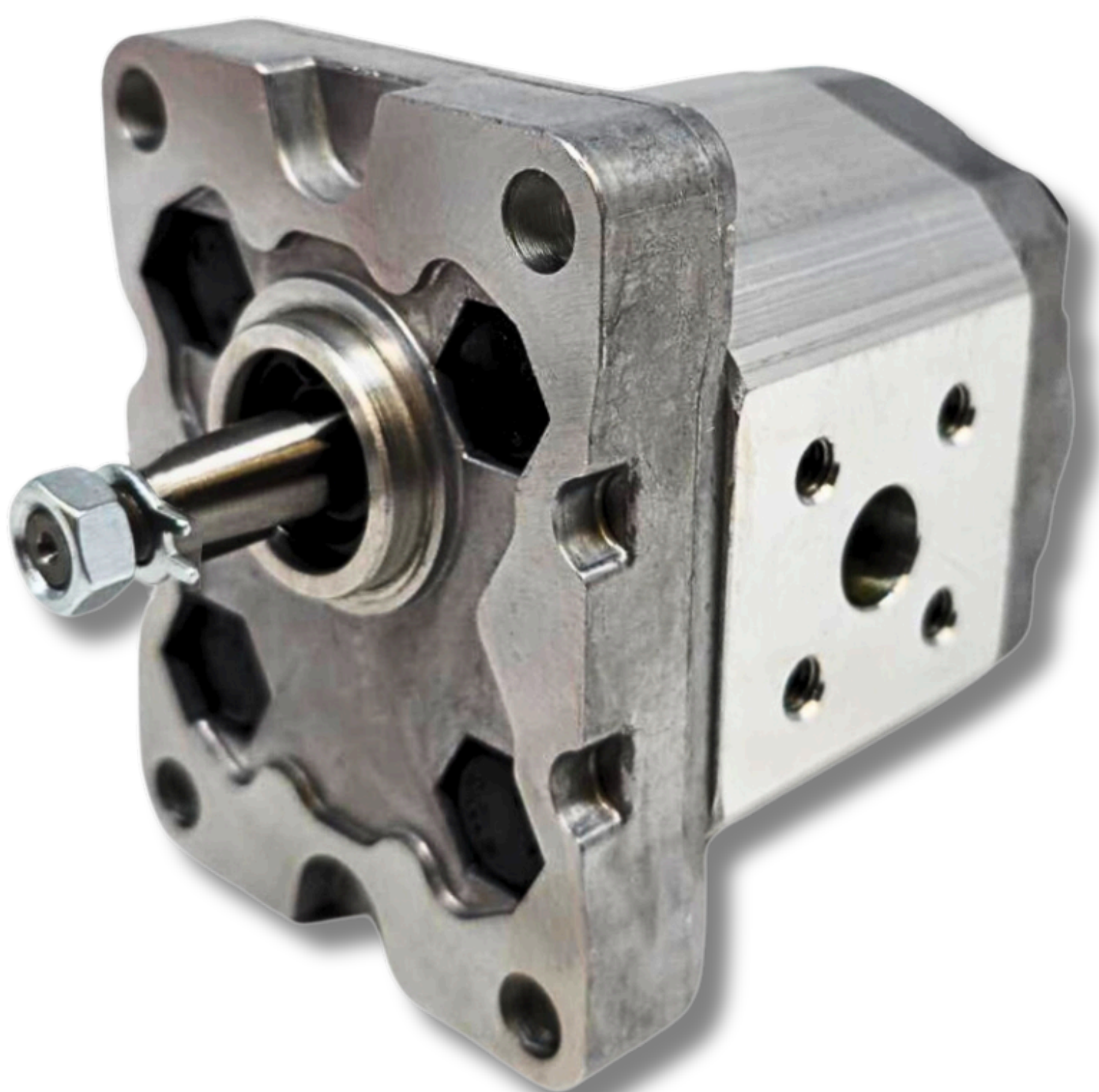
FLOWFIT®

GROUP 1 GEAR PUMPS

Group 1 Hydraulic Gear Pumps are compact, lightweight, and efficient hydraulic pumps designed for low to medium flow rates and pressure applications. They are a part of the categorization system used in hydraulics to define gear pumps by size and capacity. These pumps are often used in systems where space is limited but reliable performance is essential.

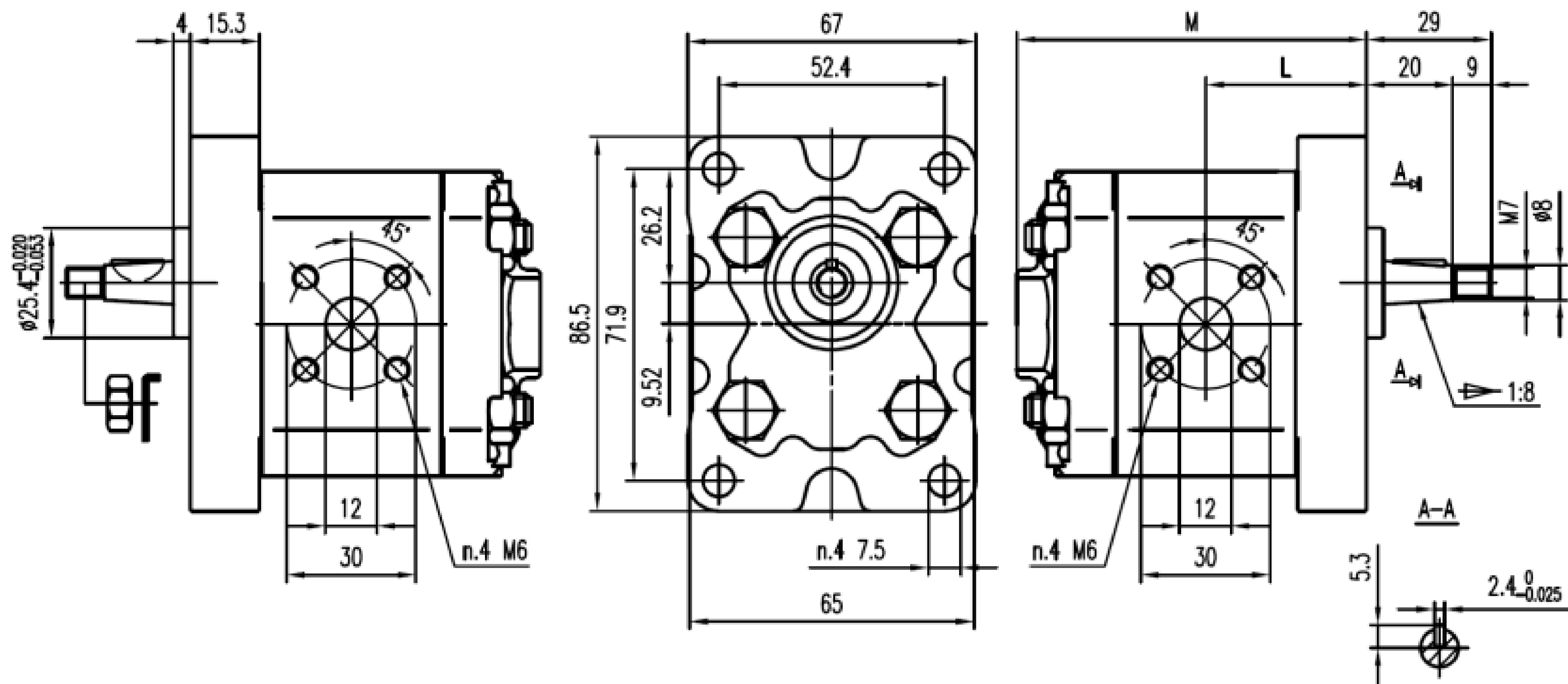
Key Features:

- Compact Design: Ideal for equipment with space constraints.
- Operating Pressure: Supports up to 250 bar
- Porting Options: Available in threaded, or elbow ported.
- Versatility: Commonly used in agricultural machinery, compact construction equipment, and mobile hydraulics.
- Rotation Options: Can be supplied in clockwise or counter clockwise rotation depending on system requirements.



GROUP ONE HYDRAULIC GEAR PUMP

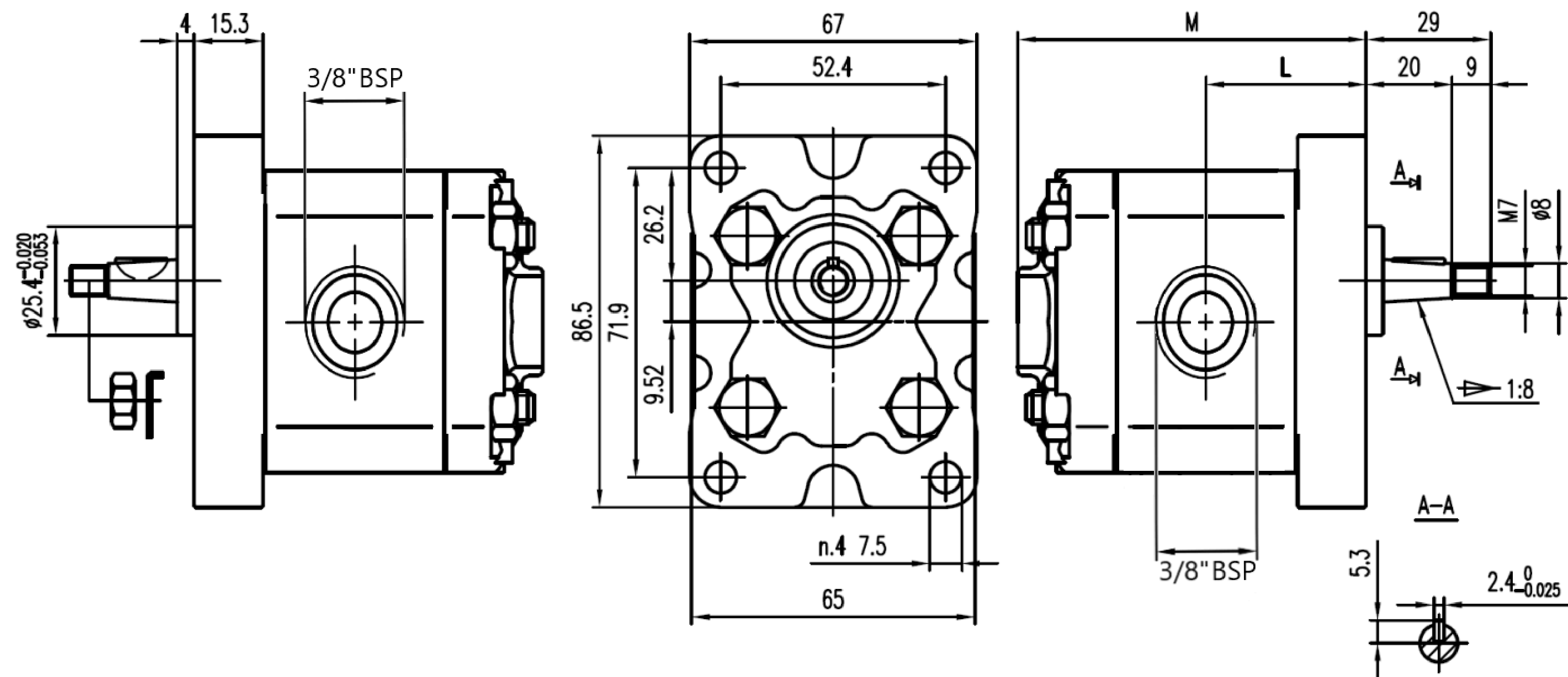
EURO 4 BOLT, 1/8 TAPER, ELBOW PORTS



Displacement	Max Pressure			Max Speed	Min Speed	Dimensions	
						M	L
cm3 /rev	P1	P2	P3	r/min	r/min	mm	mm
0.8	250	270	290	6000	1000	73.5	32.8
1.1	250	270	290	6000	1000	74	33
1.3	250	270	290	6000	1000	75	33.5
1.6	250	270	290	6000	1000	76	34
1.8	250	270	290	6000	1000	77	34.5
2.1	250	270	290	6000	1000	78	35
2.7	250	270	290	6000	800	80	36
3.2	250	270	290	5000	800	82	37
3.7	250	270	290	4500	800	84	38
4.2	250	270	290	4000	800	86	39
4.8	230	250	270	3500	600	88	40
5.8	230	250	270	3000	600	92	42
7	210	230	250	2500	600	96	44
8	180	200	230	2100	600	100	46
9.8	150	170	190	2100	600	104	48

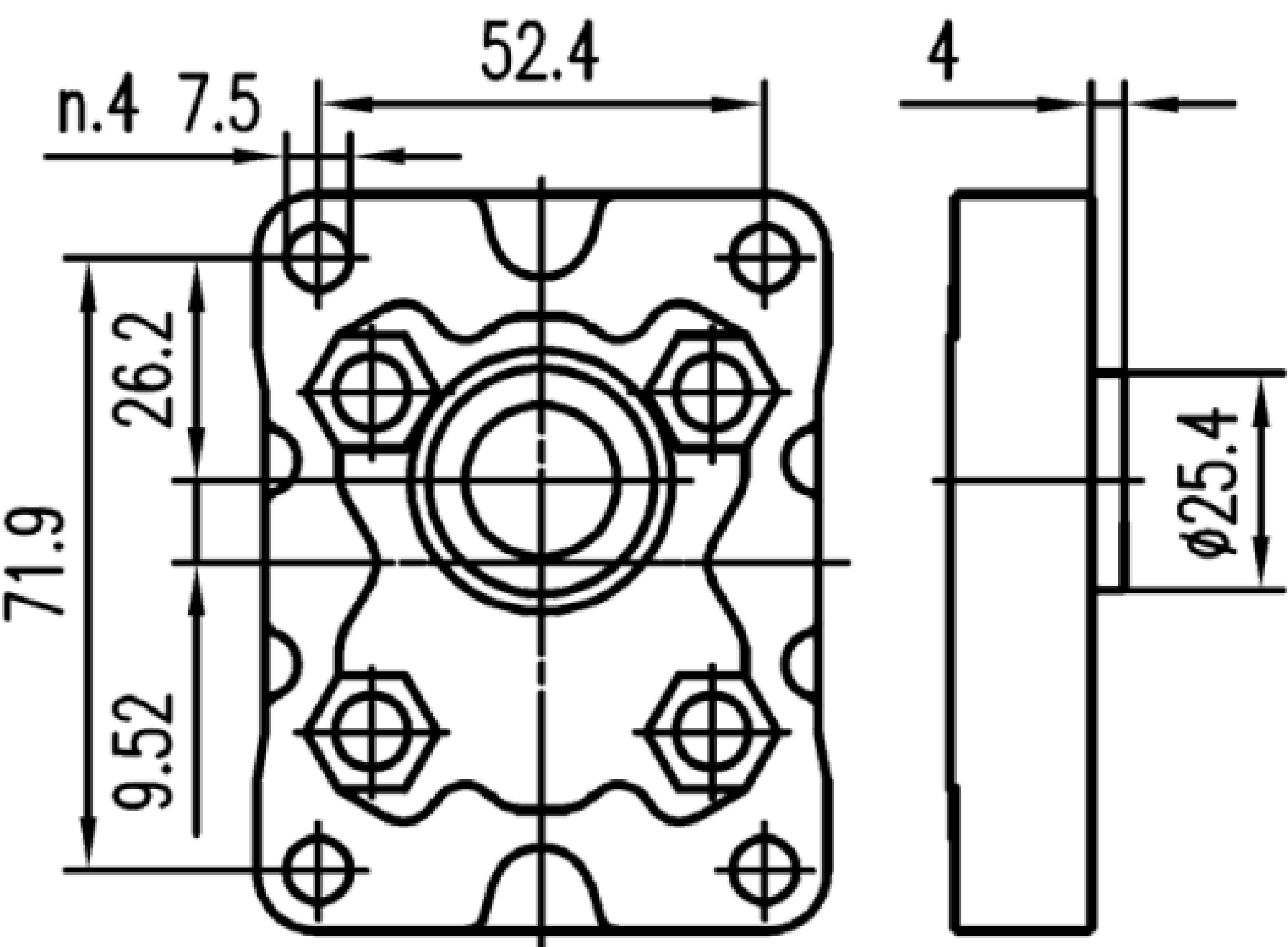
GROUP ONE HYDRAULIC GEAR PUMP

EURO 4 BOLT, 1/8 TAPER, BSP PORTS

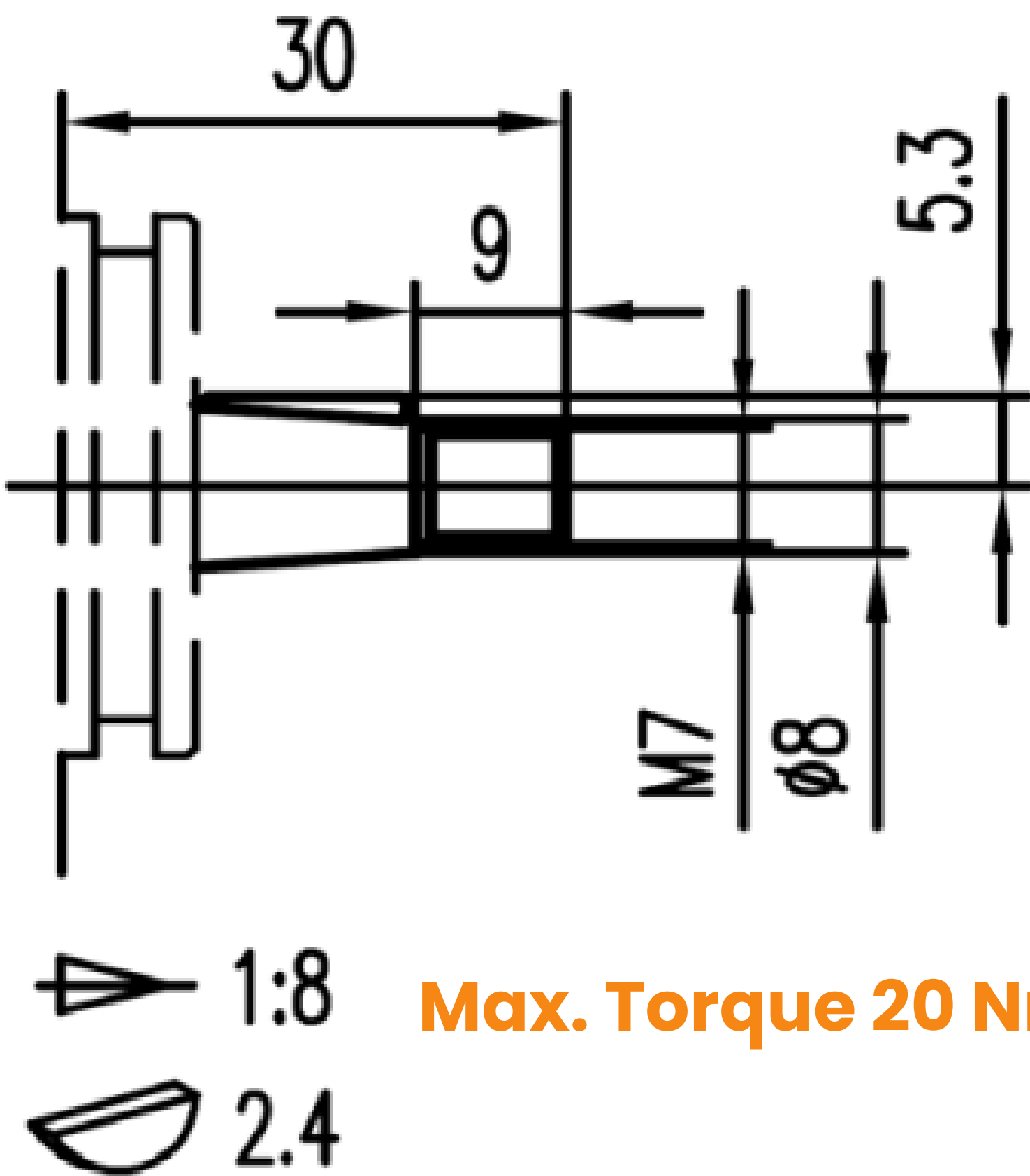


Displacement	Max Pressure			Max Speed	Min Speed	Dimensions	
						M	L
cm3 /rev	P1	P2	P3	r/min	r/min	mm	mm
0.8	250	270	290	6000	1000	73.5	32.8
1.1	250	270	290	6000	1000	74	33
1.3	250	270	290	6000	1000	75	33.5
1.6	250	270	290	6000	1000	76	34
1.8	250	270	290	6000	1000	77	34.5
2.1	250	270	290	6000	1000	78	35
2.7	250	270	290	6000	800	80	36
3.2	250	270	290	5000	800	82	37
3.7	250	270	290	4500	800	84	38
4.2	250	270	290	4000	800	86	39
4.8	230	250	270	3500	600	88	40
5.8	230	250	270	3000	600	92	42
7	210	230	250	2500	600	96	44
8	180	200	230	2100	600	100	46
9.8	150	170	190	2100	600	104	48

FRONT COVER

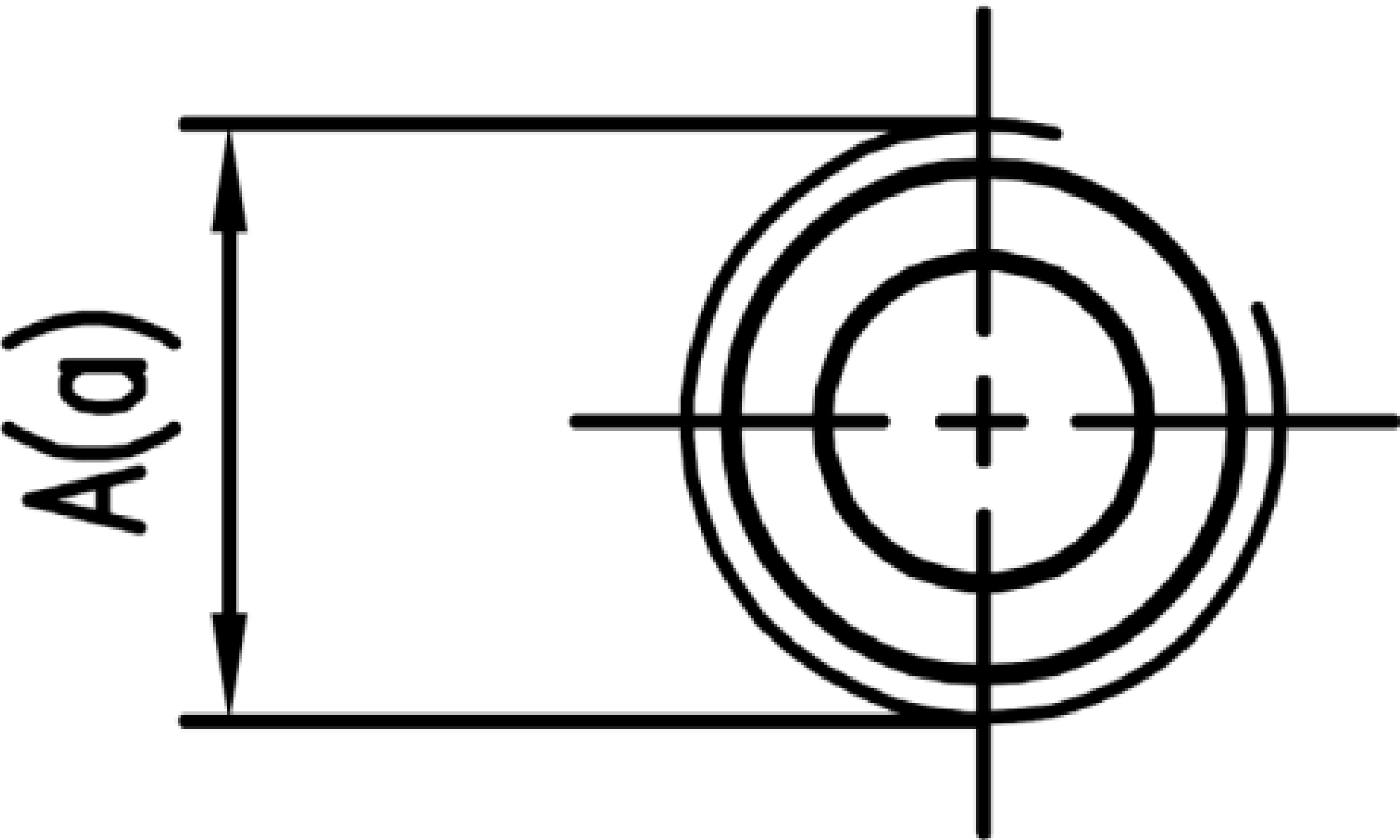


SHAFT

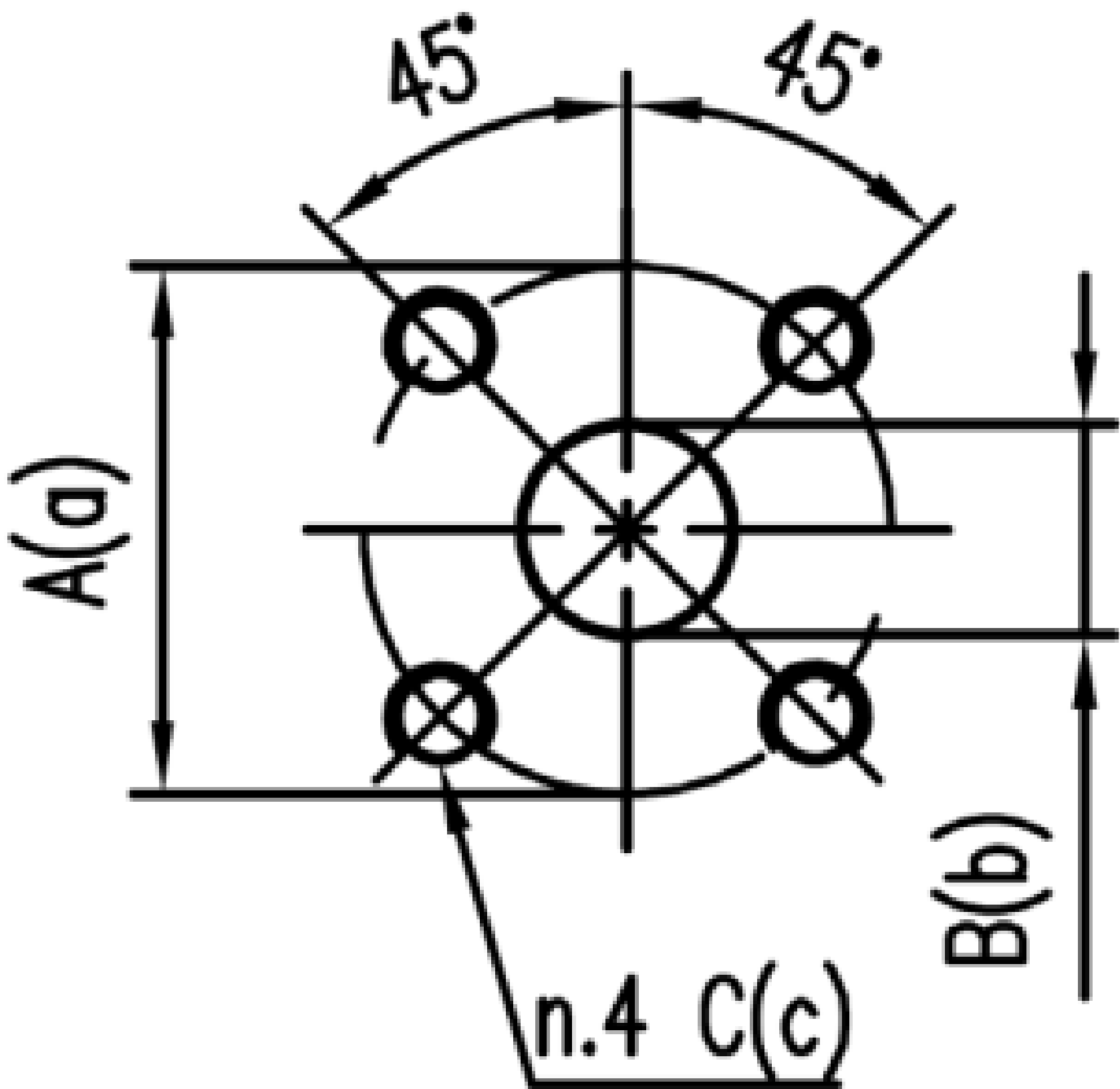


Max. Torque 20 Nm

PORTS



INLET	OUTLET
A	a
G3/8	G3/8



INLET			OUTLET		
A	B	C	a	b	c
30	12	M6	30	12	M6