

## LOG SPLITTER AUTO KICK OUT VALVE

- Constructed of high tensile strength gray cast iron
- Built-in adjustable relief valve
- Hard chrome plated spool

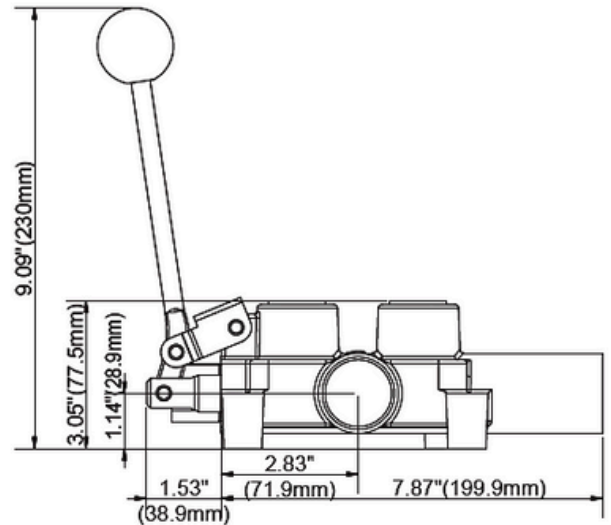
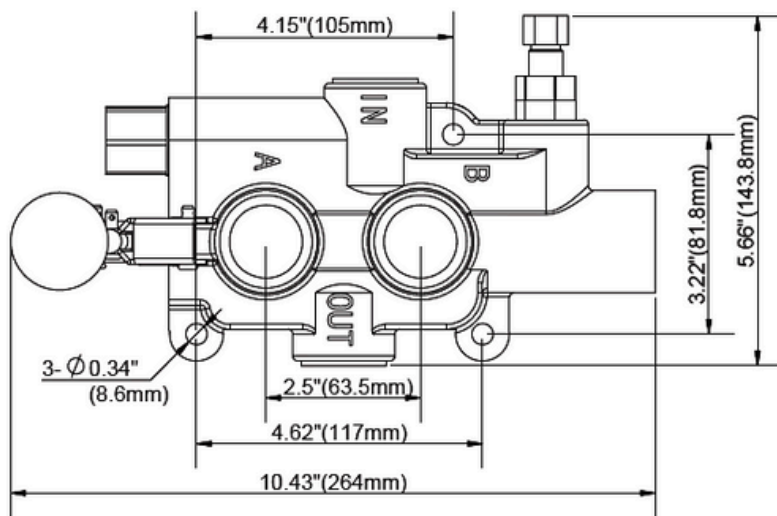
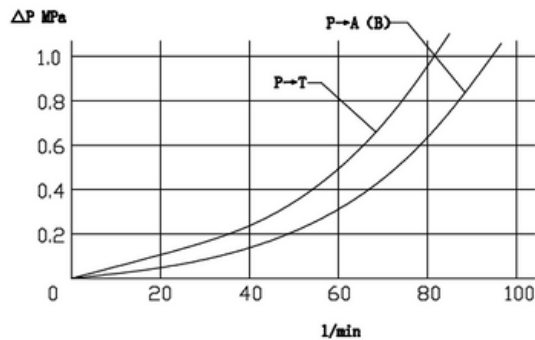
### RECOMMENDED HYDRAULIC SYSTEM

- Maximum tank pressure: 500 PSI (35 BAR)
- Maximum operating temperature: 180°F
- Recommended system filtration: 10 micron

### STANDARD FEATURES

- Maximum LPM: 113
- Maximum operating pressure : 3,500 PSI (241 BAR)
- Built-in relief valve preset at 2,250 PSI (155 BAR)
- Kick-off pressure adjustable from 1000-2600 psi (179 BAR), at 1400 psi (96 BAR)
- Automatically kicks back to neutral when cylinder completes stroke
- Handle can be installed in "up" or "down" position

#### Pressure Drop



### CLASSIC



PART NUMBER	INLET/OUTLET PORTS	WORKING PORTS	MAX FLOW (LPM)	MAX PRESSURE (PSI)	RELIEF VALVE	KICK OFF PRESSURE	WEIGHT
LS255BBA43	3/4" BSP	1/2" BSP	113	2750 (189 BAR)	Adjustable, preset at 2,250 PSI (155 BAR)	Adjustable from 1000-2600 PSI (179 BAR), preset at 1400 PSI (96 BAR)	4.5Kg