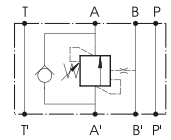
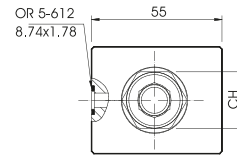
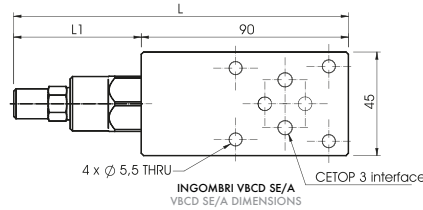


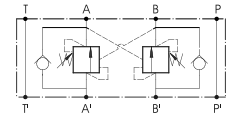
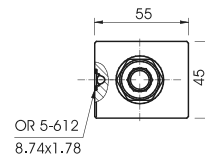
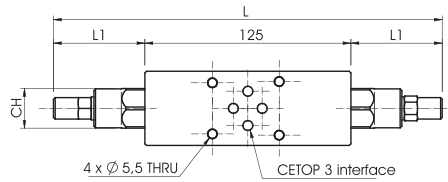


## VALVOLE DI BLOCCO E CONTROLLO DISCESA A SEMPLICE E DOPPIO EFFETTO MODULARE CETOP 3 STACKABLE CETOP 3 SINGLE AND DOUBLE OVERCENTRE VALVE



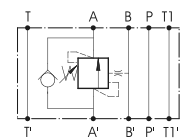
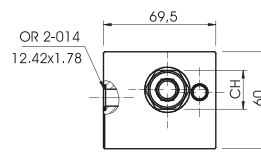
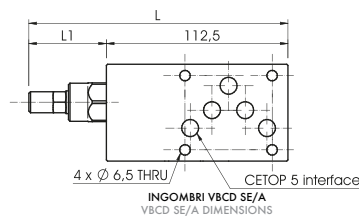
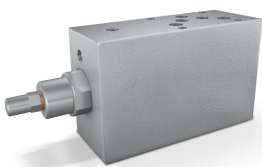
SCHEMA VBCD SE/A  
VBCD SE/A DIAGRAM

CODICE CODE	SIGLA TYPE	RAPP. PILOT PILOT RATIO	PORTATA MAX MAX FLOW	PRESSIONE MAX MAX PRESSURE	L mm	L1 mm
<b>V1411</b>	VBCD SE/A NG6 CETOP 3	1:4.5	40	350	145	55
<b>V1412</b>	VBCD SE/B NG6 CETOP 3	1:4.5	40	350	145	55

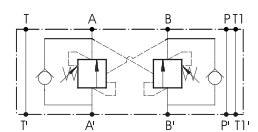
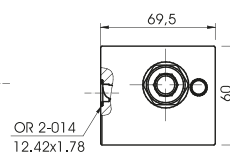
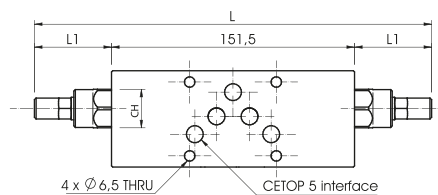
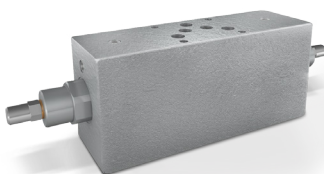


<b>V1421</b>	VBCD DE NG6 CETOP 3	1:4.5	40	350	236	55,5
--------------	---------------------	-------	----	-----	-----	------

## VALVOLE DI BLOCCO E CONTROLLO DISCESA A SEMPLICE E DOPPIO EFFETTO MODULARE CETOP 5 STACKABLE CETOP 5 SINGLE AND DOUBLE OVERCENTRE VALVE



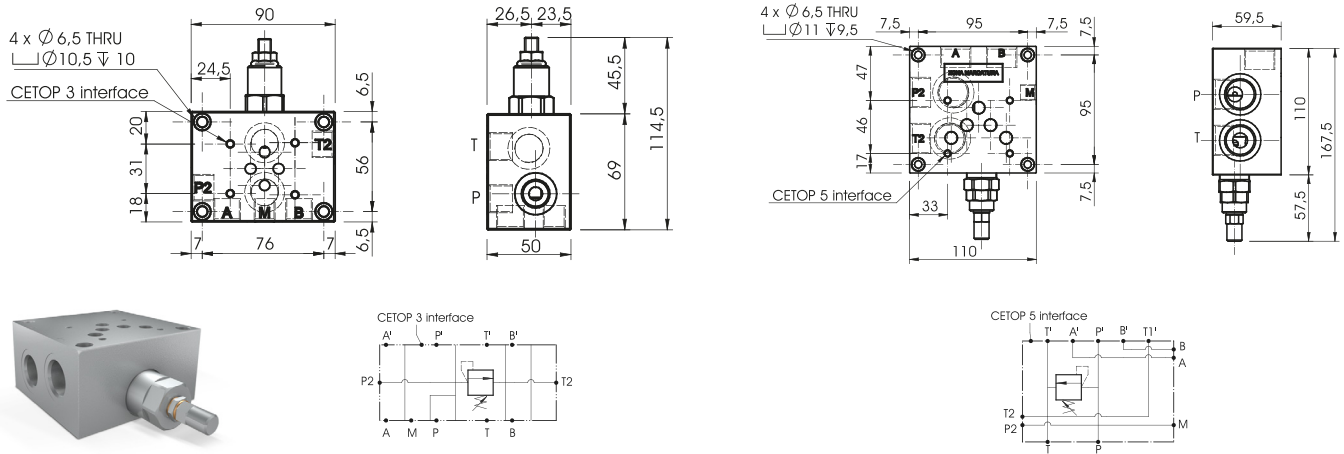
CODICE CODE	SIGLA TYPE	RAPP. PILOT PILOT RATIO	PORTATA MAX MAX FLOW	PRESSIONE MAX MAX PRESSURE	L mm	L1 mm
<b>V1431</b>	VBCD SE/A NG10 CETOP 5	1:4.5	80	350	160,5	48
<b>V1432</b>	VBCD SE/B NG10 CETOP 5	1:4.5	80	350	160,5	48
<b>V1436</b>	VBCD SE/A NG10 CETOP 5 CC*	1:4.5	80	350	177,5	65
<b>V1437</b>	VBCD SE/B NG10 CETOP 5 CC*	1:4.5	80	350	177,5	65



<b>V1441</b>	VBCD DE NG10 CETOP 5	1:4.5	80	350	247,5	48
<b>V1447</b>	VBCD DE NG10 CETOP 5 CC*	1:4.5	80	350	281,5	65

\* CC= CENTRO CHIUSO / CLOSED CENTRE

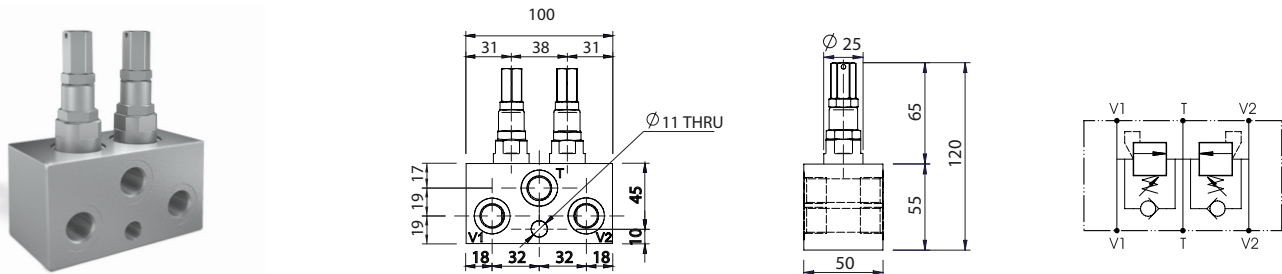
**BASETTA CON VALVOLA DI MASSIMA CETOP 3 E CETOP 5**  
**CETOP 3 AND CETOP 5 RELIEF SUBPLATE**



CODICE CODE	SIGLA TYPE	PORTATA MAX MAX FLOW	PRESSIONE MAX MAX PRESSURE	ABPT GAS	M GAS	MAT
<b>BS030</b>	VMP NG6 CETOP 3	40	300	G 3/8"	G 1/4"	STEEL
<b>BS050</b>	VMP NG10 CETOP 5	80	300	G 3/4"	G 1/4"	ALU

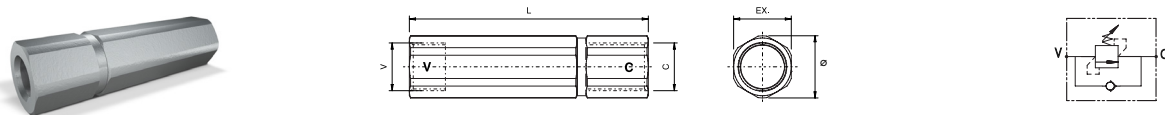
PRESSURE RANGE BS030: 10 - 70 BAR, 20 - 220 BAR, 80 - 300 BAR  
 PRESSURE RANGE BS050: 10 - 120 BAR, 50 - 300 BAR

**VALVOLE ANTIURTO CON ANTICAVITAZIONE**  
**DUAL CROSS RELIEF VALVES WITH ANTI-CAVITATION**



CODICE CODE	SIGLA TYPE	PORTATA MAX MAX FLOW	PRESSIONE MAX MAX PRESSURE	V1 - V2 - T GAS
<b>V0507</b>	VAUAC 3/8"	45	160	G 3/8"

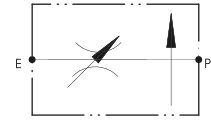
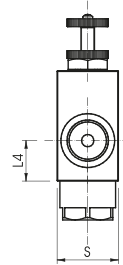
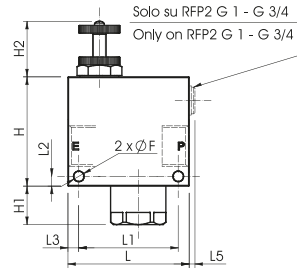
**VALVOLE DI SEQUENZA DIRETTA IN LINEA COMPATTA**  
**DIRECT ACTING SEQUENCE VALVE, COMPACT TYPE**



CODICE CODE	SIGLA TYPE	PORTATA MAX MAX FLOW	PRESSIONE MAX MAX PRESSURE	C - V GAS	L mm	EX mm	Ø mm
<b>V0646</b>	VSQL 3/8"	30	350	3/8"	99	24	26,5
<b>V0643</b>	VSQL 1/2"	60	350	1/2"	124,5	32	34,5
<b>V0645</b>	VSQL 3/4"	80	350	3/4"	132,5	32	34,5

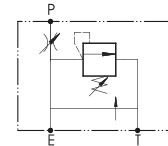
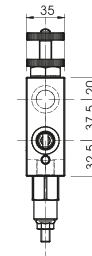
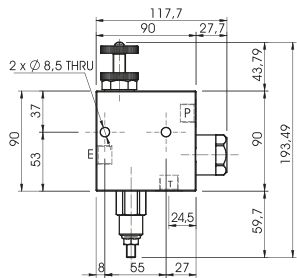
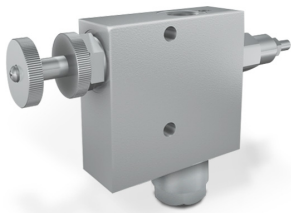
PRESSURE RANGE VSQL 3/8": 20 - 120 BAR  
 PRESSURE RANGE VSQL 1/2" - 3/4": 20 - 230 BAR, 230 - 350 BAR

**VALVOLE REGOLATRICI DI FLUSSO PRIORITARIO A 2 VIE COMPENSATO**  
**2 PORT FLOW CONTROL COMPENSATED VALVE**



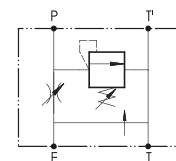
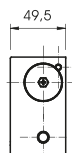
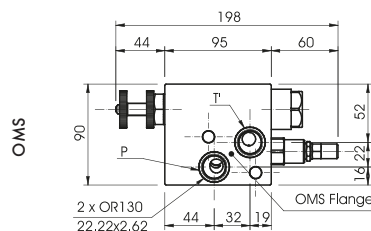
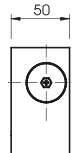
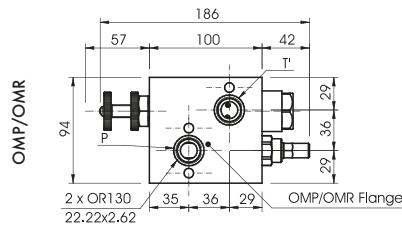
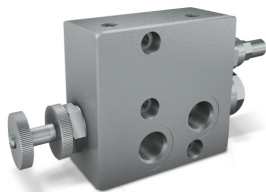
CODICE CODE	SIGLA TYPE	PORTATA MAX MAX FLOW	PRESSIONE MAX MAX PRESSURE	E - P GAS	L mm	L1 mm	L2 mm	L3 mm	L4 mm	L5 mm	F mm	H mm	H1 mm	H2 mm	S mm
<b>V1115</b>	RFP2 3/8"	30	350	G 3/8"	80	64	8	8	26	0	6,5	69	8	44	30
<b>V1125</b>	RFP2 1/2"	50	350	G 1/2"	80	64	8	8	26	0	6,5	69	8	44	30
<b>V1135</b>	RFP2 3/4"	90	350	G 3/4"	80	64	5,5	8	24,5	4	6,5	75	28	46	40
<b>V1145</b>	RFP2 1"	160	350	G 1"	100	82	8	9	33	5	8,5	90	32	46	50

**REGOLATORE DI FLUSSO PRIORITARIO CON VALVOLA DI MASSIMA PRESSIONE**  
**FLOW CONTROL VALVE EXCESS TO TANK WITH RELIEF VALVE**



CODICE CODE	SIGLA TYPE	PORTATA MAX ENTRANTE MAX INLET FLOW	PORTATA MAX REGOLATA MAX ADJUSTED FLOW	PRESSIONE MAX MAX PRESSURE	P - E - T GAS
<b>V1110/VMP</b>	RFP3 3/8" c/VMP	60	50	350	G 3/8"
<b>V1120/VMP</b>	RFP3 1/2" c/VMP	80	60	350	G 1/2"

**REGOLATORE DI FLUSSO PRIORITARIO A 3 VIE FLANGIABILE PER MOTORI DANFOSS CON VALVOLA DI MASSIMA PRESSIONE SUL PRIORITARIO**  
**FLOW CONTROL VALVE EXCESS TO TANK FLANGEABLE ON DANFOSS MOTORS WITH RELIEF VALVE ON PRIORITY LINE**



CODICE CODE	SIGLA TYPE	PORTATA MAX ENTRANTE MAX INLET FLOW	PORTATA MAX REGOLATA MAX ADJUSTED FLOW	PRESSIONE MAX MAX PRESSURE
<b>V1121/VMP</b>	RFP3 1/2" OMP/OMR c/VMP	80	60	350
<b>V1122/VMP</b>	RFP3 1/2" OMS c/VMP	80	60	350

