



COMPANY WITH
QUALITY SYSTEM
CERTIFIED BY DNV GL
= ISO 9001 =

COLLETORE OLIO
OIL MANIFOLD
ÖLVERTEILERBLOCK

CODICE/CODE/COE

CMA0135-AZ-0 **-OL**

N° STAZIONI
NO. OF STATIONS
ANZAHL STATIONEN

- * **A**- alluminio (standard)
- S**- acciaio (su richiesta)
- X**- acciaio inox (su richiesta)
- * **A**- aluminium (standard)
- S**- steel (on request)
- X**- stainless steel (on request)
- * **A**- aluminium (standard)
- S**- stahl (auf Anfrage)
- X**- edelstahl (auf Anfrage)

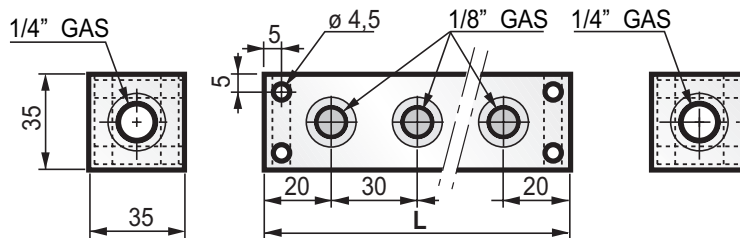
| N° (N° STAZIONI) (No. OF STATIONS) (ANZAHL STATIONEN) | L | PESO WEIGHT GEWICHT kg |
|--|-----|---------------------------------|
| 2 | 70 | 0,2 |
| 3 | 100 | 0,29 |
| 4 | 130 | 0,38 |
| 5 | 160 | 0,47 |
| - | - | - |
| - | - | - |
| - | - | - |
| - | - | - |

COLLETORE SCHEMA PARALLELO
PARALLEL SCHEME MANIFOLD
VERTEILERBLOCK MIT PARALLELSCHEMA



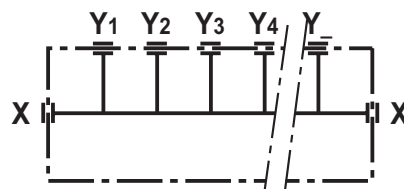
FOTO/PICTURE/FOTO

CMA0135-AZ-05-OL



MASSIMA PRESSIONE DI LAVORO: 250 BAR (LEGA DI ALUMINIO)
MAXIMUM OPERATING PRESSURE: 250 BAR (ALUMINIUM ALLOY)
MAXIMALER BETRIEBSDRUCK: 250 BAR (ALUMINIUMLEGIERUNG)
TRATTAMENTO SUPERFICIALE ALLUMINIO: ANODIZZAZIONE NEUTRA SATINATA
ALUMINIUM SURFACE TREATMENT: NEUTRAL SATIN ANODIZING
OBERFLÄCHENBEHANDLUNG ALUMINIUM : NEUTRAL SATIN ANODISIERUNG

SCHEMA - DIAGRAM - SCHEMA



via S. Quirico, 201/H
50013 Campi Bisenzio - FI
www.oleorama.it
oleorama@oleorama.it
export@oleorama.it