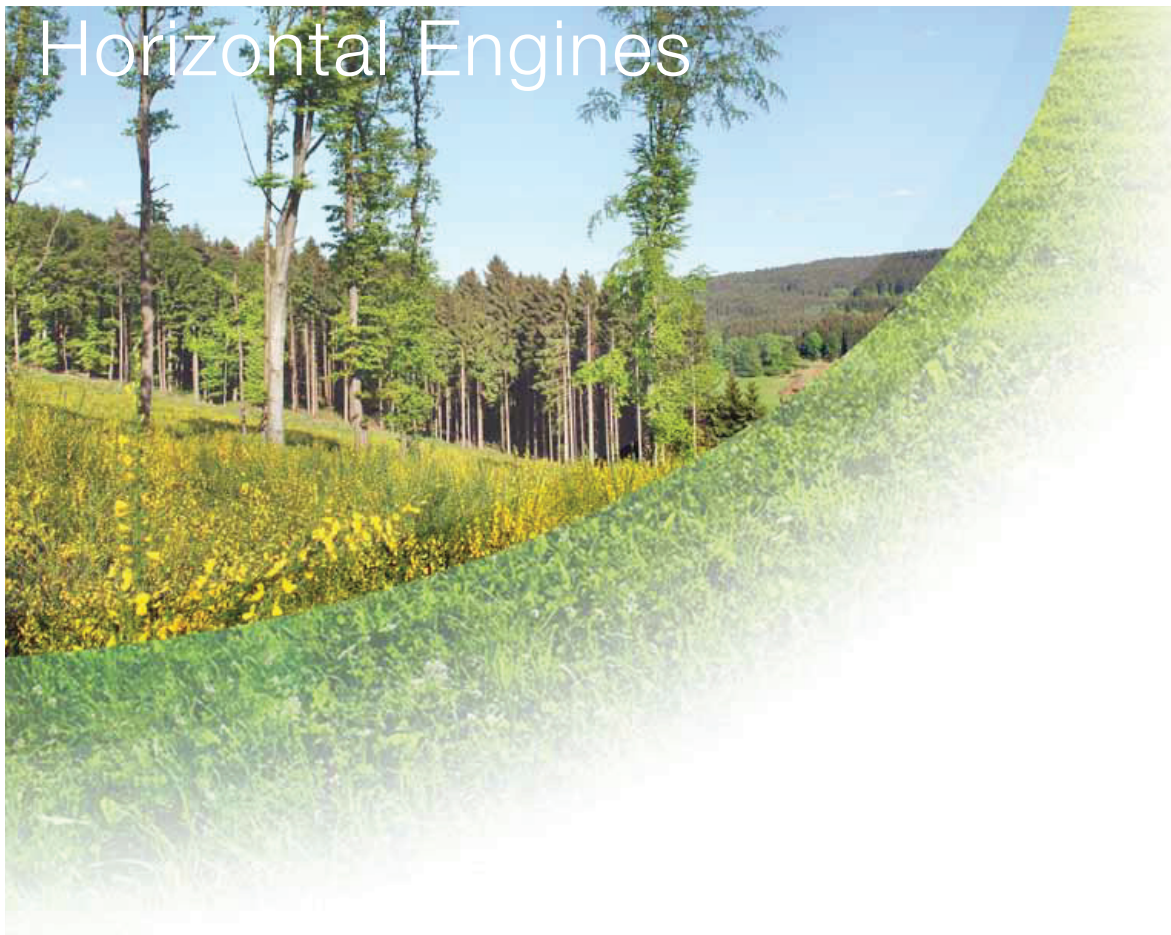


## Horizontal Engines



### 1.8hp LC152F

| LC152F                    |                 |
|---------------------------|-----------------|
| Engine Type               | SV              |
| Net Power (hp @ r/min)    | 1.8 @ 3600      |
| Net Power (kW @ r/min)    | 1.35 @ 3600     |
| Net Torque (Nm @ r/min)   | 3.3 @ 3000      |
| Bore x Stroke (mm)        | 52 x 46         |
| Displacement (cc)         | 97              |
| Compression Ratio         | 5.6 : 1         |
| Oil Capacity              | 0.45            |
| Fuel Consumption          | ≤ 450 g/kw h    |
| Oil Consumption           | ≤ 6.8 g/kw h    |
| Idle Speed                | 1700 ± 150      |
| Starting System           | Recoil          |
| Noise (≤ 7m)              | 70dBA           |
| Dimensions (L x W x H mm) | 270 x 270 x 345 |
| Net Weight (kg)           | 9               |



### 2.1hp LC154F

| LC154F                    |  |
|---------------------------|--|
| Engine Type               | Single cylinder, 4-stroke, OHV, forced air cooling |
| Net Power (hp @ r/min)    | 2.1 @ 3600   |
| Net Power (kW @ r/min)    | 1.6 @ 3600   |
| Net Torque (Nm @ r/min)   | 4.5 @ 3000   |
| Bore x Stroke (mm)        | 54 x 38  |
| Displacement (cc)         | 87   |
| Compression Ratio         | 8.0 : 1  |
| Oil Capacity              | 0.35   |
| Fuel Consumption          | ≤ 450 g/kw h                                       |
| Oil Consumption           | ≤ 6.8 g/kw h                                       |
| Idle Speed                | 1800 ± 150   |
| Starting System           | Recoil   |
| Noise (≤ 7m)              | 70dBA  |
| Dimensions (L x W x H mm) | 310 x 260 x 305                                    |
| Net Weight (kg)           | 10.5   |



## 3.5hp G120F

| Model                     | G120F  |
|---------------------------|--|
| Engine Type               | Single cylinder, 4-stroke, OHV, forced air cooling |
| Net Power (hp @ r/min)    | 3.5 @ 3600   |
| Net Power (kW @ r/min)    | 2.6 @ 3600   |
| Net Torque (Nm @ r/min)   | 7.3 @ 2500   |
| Bore x Stroke (mm)        | 60 x 42  |
| Displacement (cc)         | 118  |
| Compression Ratio         | 8.5 : 1  |
| Oil Capacity              | 0.6  |
| Fuel Consumption          | ≤ 395 g/kw h                                       |
| Oil Consumption           | ≤ 6.8 g/kw h                                       |
| Idle Speed                | 1450 ± 150   |
| Starting System           | Recoil / Electric start                            |
| Noise (≤ 7m)              | 70dBA  |
| Dimensions (L x W x H mm) | 341 x 305 x 318                                    |
| Net Weight (kg)           | 13   |



## 4.8hp G160F

| Model                     | G160F  |
|---------------------------|--|
| Engine Type               | Single cylinder, 4-stroke, OHV, forced air cooling |
| Net Power (hp @ r/min)    | 4.8 @ 3600   |
| Net Power (kW @ r/min)    | 3.6 @ 3600   |
| Net Torque (Nm @ r/min)   | 10.3 @ 2500  |
| Bore x Stroke (mm)        | 68 x 45  |
| Displacement (cc)         | 163  |
| Compression Ratio         | 8.5 : 1  |
| Oil Capacity              | 0.6  |
| Fuel Consumption          | ≤ 395 g/kw h                                       |
| Oil Consumption           | ≤ 6.8 g/kw h                                       |
| Idle Speed                | 1450 ± 150   |
| Starting System           | Recoil / Electric start                            |
| Noise (≤ 7m)              | 70dBA  |
| Dimensions (L x W x H mm) | 362 x 312 x 335                                    |
| Net Weight (kg)           | 15   |



## 5.5hp G200F

| Model                     | G200F  |
|---------------------------|--|
| Engine Type               | Single cylinder, 4-stroke, OHV, forced air cooling |
| Net Power (hp @ r/min)    | 5.5 @ 3600   |
| Net Power (kW @ r/min)    | 4.1 @ 3600   |
| Net Torque (Nm @ r/min)   | 12.4 @ 2500  |
| Bore x Stroke (mm)        | 68 x 54  |
| Displacement (cc)         | 196  |
| Compression Ratio         | 8.5 : 1  |
| Oil Capacity              | 0.6  |
| Fuel Consumption          | ≤ 395 g/kw h                                       |
| Oil Consumption           | ≤ 6.8 g/kw h                                       |
| Idle Speed                | 1450 ± 150   |
| Starting System           | Recoil / Electric start                            |
| Noise (≤ 7m)              | 70dBA  |
| Dimensions (L x W x H mm) | 376 x 312 x 335                                    |
| Net Weight (kg)           | 16   |



## 7hp G240F

| Model                     | G240F  |
|---------------------------|--|
| Engine Type               | Single cylinder, 4-stroke, OHV, forced air cooling |
| Net Power (hp @ r/min)    | 7.0 @ 3600   |
| Net Power (kW @ r/min)    | 5.2 @ 3600   |
| Net Torque (Nm @ r/min)   | 15.1 @ 2500  |
| Bore x Stroke (mm)        | 73 x 58  |
| Displacement (cc)         | 242  |
| Compression Ratio         | 8.2 : 1  |
| Oil Capacity              | 0.95   |
| Fuel Consumption          | ≤ 374 g/kw h                                       |
| Oil Consumption           | ≤ 6.8 g/kw h                                       |
| Idle Speed                | 1450 ± 150   |
| Starting System           | Recoil / Electric start                            |
| Noise (≤ 7m)              | 70dBA  |
| Dimensions (L x W x H mm) | 430 x 380 x 410                                    |
| Net Weight (kg)           | 24.5   |



## 9.5hp G340F

| G340F                     |  |
|---------------------------|--|
| Engine Type               | Single cylinder, 4-stroke, OHV, forced air cooling |
| Net Power (hp @ r/min)    | 9.5 @ 3600   |
| Net Power (kW @ r/min)    | 7.1 @ 3600   |
| Net Torque (Nm @ r/min)   | 21.6 @ 2500  |
| Bore x Stroke (mm)        | 82 x 64  |
| Displacement (cc)         | 337  |
| Compression Ratio         | 8 : 1  |
| Oil Capacity              | 1.1  |
| Fuel Consumption          | ≤ 374 g/kw h                                       |
| Oil Consumption           | ≤ 6.8 g/kw h                                       |
| Idle Speed                | 1450 ± 150   |
| Starting System           | Recoil / Electric start                            |
| Noise (≤ 7m)              | 70dBA  |
| Dimensions (L x W x H mm) | 450 x 405 x 443                                    |
| Net Weight (kg)           | 31   |



## 12hp G390F

| G390                      |  |
|---------------------------|--|
| Engine Type               | Single cylinder, 4-stroke, OHV, forced air cooling |
| Net Power (hp @ r/min)    | 12 @ 3600  |
| Net Power (kW @ r/min)    | 9 @ 3600   |
| Net Torque (Nm @ r/min)   | 26.5 @ 2500  |
| Bore x Stroke (mm)        | 90 x 66  |
| Displacement (cc)         | 420  |
| Compression Ratio         | 8.3 : 1  |
| Oil Capacity              | 1.1  |
| Fuel Consumption          | ≤ 374 g/kw h                                       |
| Oil Consumption           | ≤ 6.8 g/kw h                                       |
| Idle Speed                | 1450 ± 150   |
| Starting System           | Recoil / Electric start                            |
| Noise (≤ 7m)              | 70dBA  |
| Dimensions (L x W x H mm) | 450 x 405 x 443                                    |
| Net Weight (kg)           | 31   |



## 12hp G420F

| G420                      |  |
|---------------------------|--|
| Engine Type               | Single cylinder, 4-stroke, OHV, forced air cooling |
| Net Power (hp @ r/min)    | 12 @ 3600  |
| Net Power (kW @ r/min)    | 9 @ 3600   |
| Net Torque (Nm @ r/min)   | 26.5 @ 2500  |
| Bore x Stroke (mm)        | 90 x 66  |
| Displacement (cc)         | 420  |
| Compression Ratio         | 8.3 : 1  |
| Oil Capacity              | 1.1  |
| Fuel Consumption          | ≤ 374 g/kw h                                       |
| Oil Consumption           | ≤ 6.8 g/kw h                                       |
| Idle Speed                | 1450 ± 150   |
| Starting System           | Recoil / Electric start                            |
| Noise (≤ 7m)              | 70dBA  |
| Dimensions (L x W x H mm) | 450 x 405 x 443                                    |
| Net Weight (kg)           | 31   |



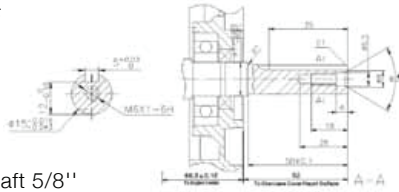
## 19.7 hp V-Twin

| LC2V78FD-1                |   |
|---------------------------|---|
| Engine Type               | V-Twin, 4-stroke, OHV, forced air cooling |
| Net Power (hp @ r/min)    | 19.7 @ 3600                               |
| Net Power (kW @ r/min)    | 14.7 @ 3600                               |
| Net Torque (Nm @ r/min)   | 43.5 @ 2500                               |
| Bore x Stroke (mm)        | 78 x 71                                   |
| Displacement (cc)         | 678                                       |
| Compression Ratio         | 8.5 : 1                                   |
| Fuel Consumption          | ≤ 360 g/kw h                              |
| Idle Speed                | 1500 ± 150                                |
| Speed Fluctuate Ratio     | ≤ 10%                                     |
| Starting Mode             | Electric                                  |
| Dimensions (L x W x H mm) | 510 x 400 x 450                           |
| Net Weight (kg)           | 43  |



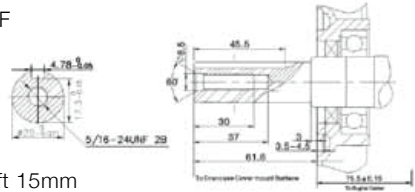
# Repower Engines - Shaft Drawings

LC152F



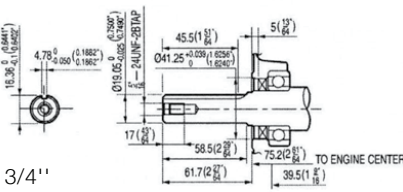
STD-Shaft 5/8"

LC152F



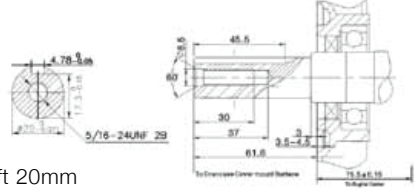
M-Shaft 15mm

G120F



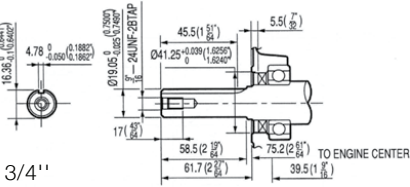
P-Shaft 3/4"

G120F



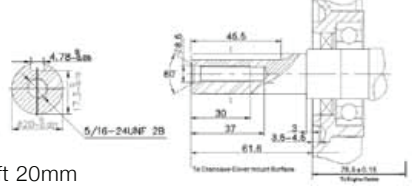
M-Shaft 20mm

G160F



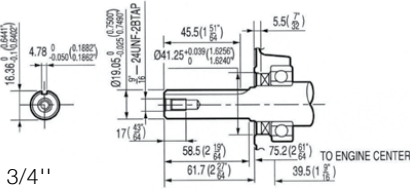
P-Shaft 3/4"

G160F



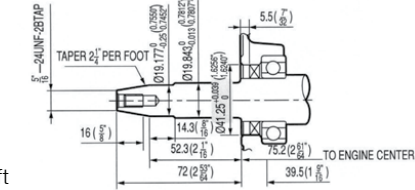
M-Shaft 20mm

G200F



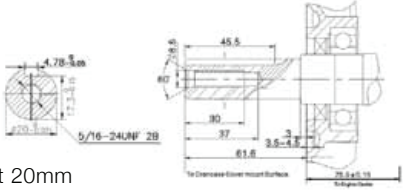
P-Shaft 3/4"

G200F



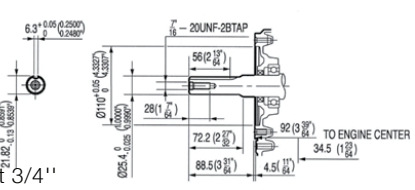
G-Shaft

G200F



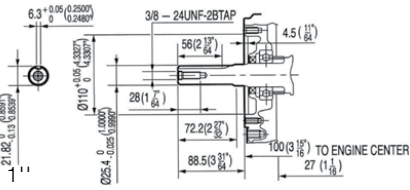
M-Shaft 20mm

G240F



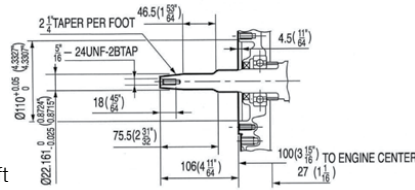
P-Shaft 3/4"

G340F



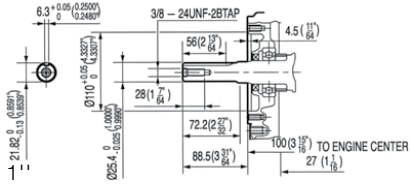
P-Shaft 1"

G340F



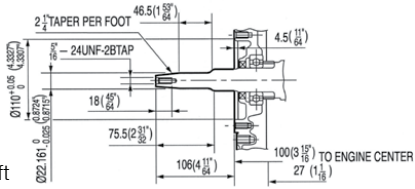
G-Shaft

G390F



P-Shaft 1"

G390F



G-Shaft