

Workshop Hose Crimpers

FF25

Compact, Precise, Simple and easy to use hose crimping machine.

Simple and economy hose crimping machine with high precision and perfect geometry results. This machine is compact, reliable, robust and easy to use and handle thanks to its low weight (65 kgs).

The use of this machine is ideally recommended for service hose assembly up to 1" 4-Wire spiral and 1 1/2" 2-Wire and can also be used to crimp small tubes and cables.

We recommend the use of this machine for an intermittent use of approximately 30 to 50 hose assemblies per day

Crimps up to 1 1/2" Hose



Optional

PRODUCT FEATURES

- **COMPACT & LIGHT, EASY TO HANDLE**
- **SIMPLE TO USE**
- **FRONT RACKINGS FOR DIE**
- **HIGH PRECISION**

TECHNICAL SPECIFICATION

Maximum Capacity For an intermittent use in high pressure hose assembling	2-SN: 1 1/2" (DN32; -20) 4-SP: 1" (DN25, -20) 6-SP ou Interlock: 3/4" (DN19, -12)
Motor	2.2 kW 400V 3-PH 50Hz (NK25E.1) 2.2 kW 230V 3-PH 50Hz (NK25E.2) Other electric voltages available : 230V 3-PH 60Hz, 230V 1-PH 60Hz, 110V 1-PH 60Hz
Radial Press Force	120 Tons
Opening with Dies	Ø Die + 18mm
Opening without Dies	59 mm
Length of master die shoe	65mm
Net Weight	62 KGs (with oil, w/o dies)
Transport Packing Details	Each machine on wood crate (NIMP15 conform) Packing dimensions : 58x70x75cms, 85 KGs

PRICE FOR MACHINE

NO DIE INCLUDED
SELECT DIES FROM TABLE BELOW

PART NO.	DIE SIZE Ø	HOSE SIZE	NETT. PRICE	
			£ STERLING	€ EUROS
FF25-DIE-06*	6	*BY MAN		
FF25-DIE-08*	8	*BY MAN		
FF25-DIE-10	10	*BY MAN		
FF25-DIE-12	12	*BY MAN		
FF25-DIE-15	15	*BY MAN		
FF25-DIE-18	18	**1/4"		
FF25-DIE-21	21	**3/8"		
FF25-DIE-24	24	**1/2"		
FF25-DIE-27	27	**5/8"		
FF25-DIE-30	30	**3/4"		
FF25-DIE-33	33	*BY MAN		
FF25-DIE-39	39	**1"		
FF25-DIE-45	45	*BY MAN		
FF25-DIE-48*	48	*BY MAN		
FF25-DIE-51*	51	**1 1/4"		
FF25-DIE-57*	57	**1 1/2"	£231.05	

*Available upon request

**The hose sizes stating hose size in table above are for use with Flowfits Vincke Hydraulic Hose!

*BY MAN = By Manufacturer, Hose size determined by hose manufacturers crimping data- Please check with YOUR hose supplier!

FF-30

Electric Hose Crimping Machine Max 1 1/2" 2-SN (DN38, -24)

Enlarged opening for elbows, Minimum space requirement.

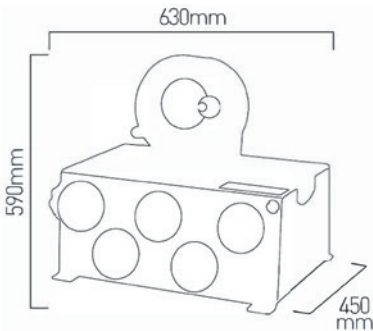
Head protected by foam inserts.

This machine is compact, reliable, robust and easy to use and handle thanks to its low weight (65 kgs).

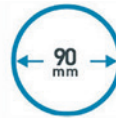
Included : 2 x Side Protection Panels

Optional : Front Die Holders (PDR)
Quick Change Tool (QCT), Support Bench (ST)

Crimps up to 1 1/2" Hose



Optional



PRODUCT FEATURES

- COMPACT, EASY TO USE
- ECONOMICAL HOSE CRIMPER
- FRONT RACKINGS FOR DIE
- HIGH PRECISION

PRICE FOR MACHINE

NO DIE INCLUDED
SELECT DIES FROM TABLE BELOW

PART NO.	DIE SIZE Ø	HOSE SIZE	NETT. PRICE	
			£ STERLING	€ EUROS
FF25-DIE-06	6	*BY MAN		
FF25-DIE-08	8	*BY MAN		
FF25-DIE-10	10	*BY MAN		
FF25-DIE-12	12	*BY MAN		
FF25-DIE-15	15	*BY MAN		
FF25-DIE-18	18	**1/4"		
FF25-DIE-21	21	**3/8"		
FF25-DIE-24	24	**1/2"		
FF25-DIE-27	27	**5/8"		
FF25-DIE-30	30	**3/4"		
FF25-DIE-33	33	*BY MAN		
FF25-DIE-39	39	**1"		
FF25-DIE-48	48	*BY MAN		
FF25-DIE-51	51	**1 1/4"		
FF25-DIE-57	57	**1 1/2"		

TECHNICAL SPECIFICATION

Indicative Hose Capacity	2-SN: 1 1/2" [DN38; -24] 4-SP: 1 1/4" [DN32; -20] R13/R15/Interlock: 1" [DN25; -16] Max. size for assembly with 2 x 90° elbows: max. 3/4" [ON 19]
Motor/Electrics	2.2 kW -400V3-PH + Earth+ Neutral 50Hz 2.2 kW - 230V 1-PH 60Hz 1.5 kW - 11 0V 1-PH 60Hz 2 kW-12 VDC [NK30-DC12]
Radial Press Force	130 Tons
Opening	Ø Die + 28mm [Press Path + 12mm]
Opening without dies	98mm
Master Die Shoe Length	75mm
Nett Weight	68 KG
Packing	Wooden crate conform to ISPM15 Crate size : 58x70x75cms Gross weight [with 5 sets of dies]: 105 kgs
Noise Level	< 70 dB[A]

**The hose sizes stating hose size in table above are for use with Flowfits Vincke Hydraulic Hose!

*BY MAN = By Manufacturer, Hose size determined by hose manufacturers crimping data- Please check with YOUR hose supplier!

FF30-PRO

Service Workshop Hose Crimper, Max 1 1/2" 2-SN (DN38, -24)

Multipurpose and Universal Workshop crimper

The use of this machine is ideally recommended for service hose assembly up to 1 1/2" 2-Wire spiral.

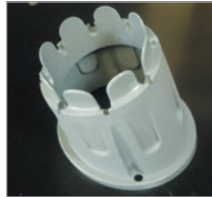
The capacity of this machine covers the most widely used hoses on the market and thanks to its large opening you can pass 2 x 90 deg. elbows with BSP nut up to 1 1/4".

We recommend the use of this machine for an intermittent use of approximately 50 to 100 hose assemblies per day

Crimps up to 1 1/2" Hose



Option : QCT-NLS



Option : PDR-1



Option : WP-12PDR

TECHNICAL SPECIFICATION

Maximum capacity : For an intermittent use in high pressure hose assembling	2-SN: 1 1/2" (DN32; -20) 4-SP: 1 1/4" (DN32, -20) 6-SP or Interlock: 1" (DN25, -16)
Motor	3KW 400V 50HZ 3-PH 2.2KW 230V 50HZ 1-PH
Radial Press Force	135 Tons
Opening with Dies	Ø Die + 28mm (Press path : +12mm)
Opening without Dies	98mm
Length of Master Die Shoes	75mm
Dimensions of the Machine	Width : 800mm x Depth : 440mm x Height : 670mm
Options Available	<ul style="list-style-type: none"> • Quick Change Tool (QCT-NLS) • Individual Die Storage Rack (PDR-1) • Die Storage Panel (WP-12PDR) • Foot Switch (FS)
Net Weight	70 kgs (with oil, w/o dies)
Transport Packing Details	Each machine on wood crate (NIMP15 conform) Packing dimensions : 58x70x75cms, 105 kgs (with 8 sets of dies)

PRICE FOR MACHINE

NO DIE INCLUDED			
SELECT DIES FROM TABLE BELOW			
PART NO.	DIE SIZE Ø	HOSE SIZE	NETT. PRICE
		£ STERLING	€ EUROS
FF25-DIE-06	6	*BY MAN	
FF25-DIE-08	8	*BY MAN	
FF25-DIE-10	10	*BY MAN	
FF25-DIE-12	12	*BY MAN	
FF25-DIE-15	15	*BY MAN	
FF25-DIE-18	18	**1/4"	
FF25-DIE-21	21	**3/8"	
FF25-DIE-24	24	**1/2"	
FF25-DIE-27	27	**5/8"	
FF25-DIE-30	30	**3/4"	
FF25-DIE-33	33	*BY MAN	
FF25-DIE-39	39	**1"	
FF25-DIE-45	45	*BY MAN	
FF25-DIE-48	48	*BY MAN	
FF25-DIE-51	51	**1 1/4"	
FF25-DIE-57	57	**1 1/2"	

**The hose sizes stating hose size in table above are for use with Flowfits Vincke Hydraulic Hose!

*BY MAN = By Manufacturer, Hose size determined by hose manufacturers crimping data- Please check with YOUR hose supplier!