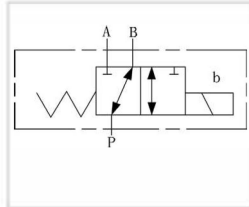


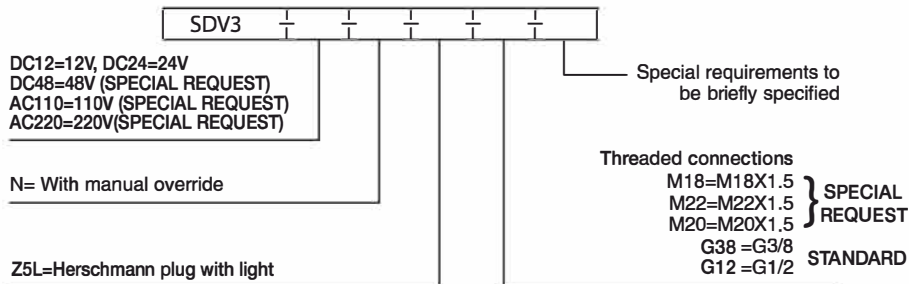
SOLENOID DIVERTER VALVES

SDV3 3 WAY SOLENOID DIVERTERS MAX FLOW 80L/MIN

www.flowfitonline.com
TECH. DATA SHEET
SDV01



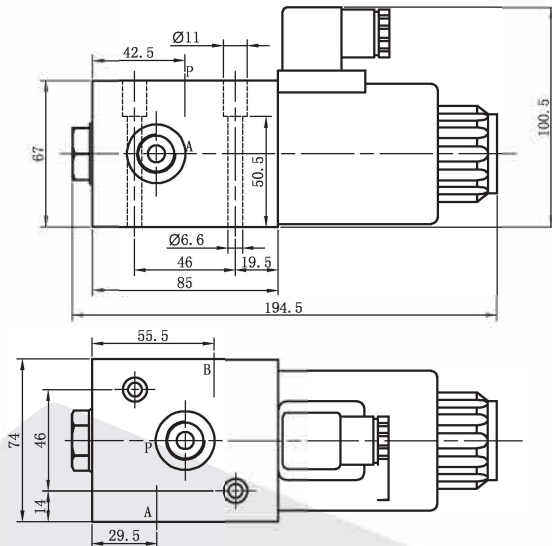
Diverters are used to add an extra facility to the directional control valve when it is needed for a sequence of operations such as a safety operation or to control a selected hydraulic cylinder. No drainline required.



Technical Data

Type Model	SDV3
Max Operating pressure (bar)	210
Max Flow rate (L/min)	80

SDV3 Installation Dimensions



- COMPACT
- EASY TO INSTALL
- EXCELLENT PRICE
- OEM TOP DEMANDED FLOWFIT PRODUCT



- MANUAL OVERRIDE STANDARD

PART NUMBER	VOLTAGE	PORT SIZE BSP	FLOW RATE L/MIN	MAX PRESSURE BAR	COIL SIZE	WEIGHT (KG)
SDV3DC12NZ5LG38	12 VDC	3/8"	80	210	NG10	4.23
SDV3DC24NZ5LG38	24 VDC	3/8"	80	210	NG10	4.23
SDV3DC12NZ5LG12	12 VDC	1/2"	80	210	NG10	4.23
SDV3DC24NZ5LG12	24 VDC	1/2"	80	210	NG10	4.23