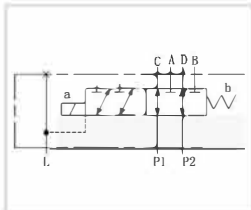


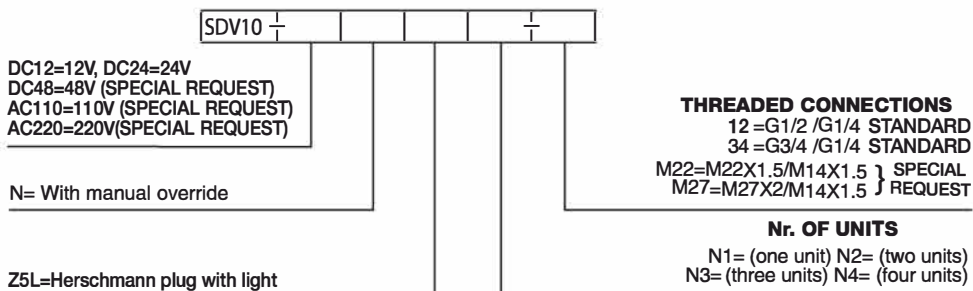
SDV10 6 WAY SOLENOID DIVERTERS MAX FLOW 80L/MIN. 315 BAR RATED

www.flowfitonline.com
TECH. DATA SHEET
SDV03



Diverters are used to add an extra facility to the directional control valve when it is needed for a sequence of operations such as a safety operation or to control a selected hydraulic cylinder.

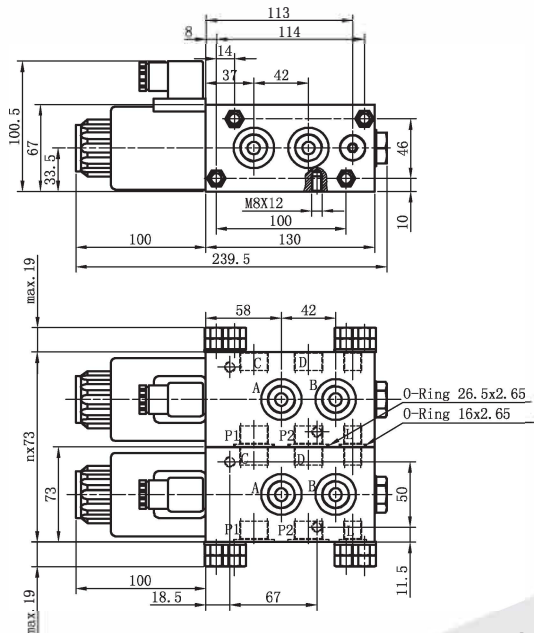
Please note drainline must be connected back to tank at all times.



Technical Data

Type Model	SDV10
Max Operating pressure (bar)	315
Max Flow rate (L/min)	80

SDV10 Installation Dimensions



- COMPACT
- EASY TO INSTALL
- EXCELLENT PRICE
- OEM TOP DEMANDED FLOWFIT PRODUCT



- MANUAL OVERRIDE STANDARD

PART NUMBER	VOLTAGE	PORT SIZE BSP	FLOW RATE L/MIN	MAX PRESSURE BAR	COIL SIZE	WEIGHT (KG)
SDV10DC12NZ5LN112	12 VDC	1/2"	80	315	NG10	5.14
SDV10DC24NZ5LN112	24 VDC	1/2"	80	315	NG10	5.14
SDV10DC12NZ5LN134	12 VDC	3/4"	80	315	NG10	5.14
SDV10DC24NZ5LN134	24 VDC	3/4"	80	315	NG10	5.14