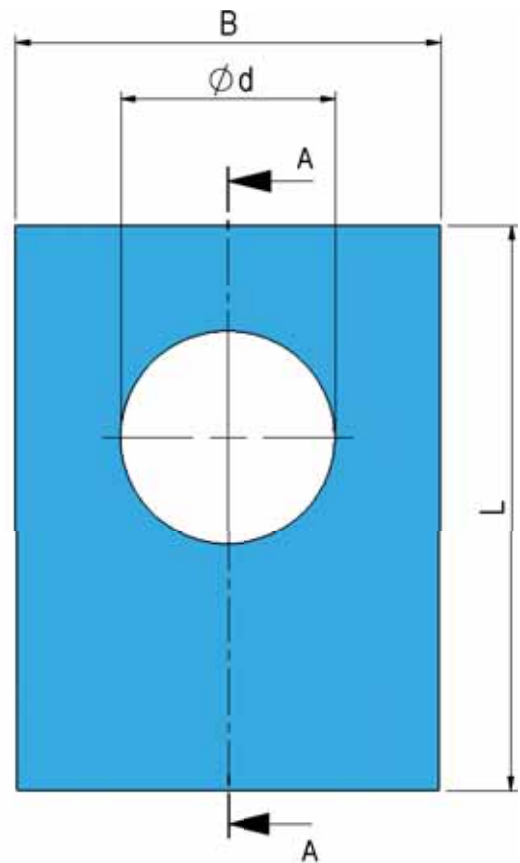
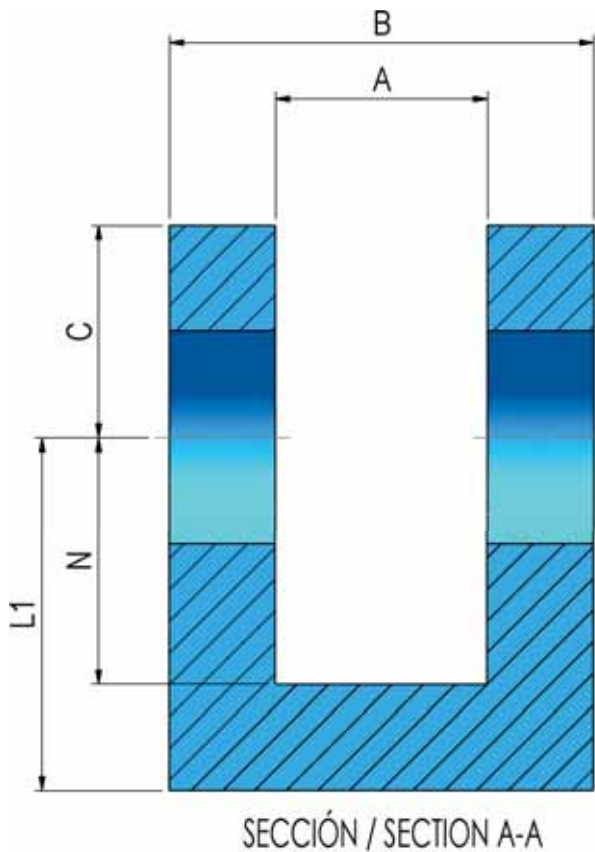




# HORQUILLA para SOLDAR Modelo FS

## WELDABLE FORK Type FS

### FOURCHES à SOUDER Type FS



REF CODE	A	B	Ød	L	L1	N	C	Peso (kg) Weight Poids
FS1710	16	35	16,20	50	34	24	16	0,27
FS1712	20	40	20,25	60	40	30	20	0,39
FS1714	25	50	25,25	65	45	30	20	0,68
FS1716	30	60	30,25	75	50	35	25	1,10
FS1720	35	70	35,25	85	55	40	35	1,64

MAT.: C40