

SPEED REDUCTION GEARBOXES

95000 SERIES ALUMINIUM SPEED REDUCTION GEARBOXES	489
96000 SERIES ALUMINIUM SPEED REDUCTION GEARBOXES	491
97500 SERIES CAST IRON SPEED REDUCTION GEARBOXES	493
97003 CAST IRON SPEED REDUCTION GEARBOX	495
97001 CAST IRON SPEED REDUCTION GEARBOX	496
97001/13 – 97001/15 CAST IRON SPEED REDUCTION GEARBOX	497

The Speed Reduction Gearboxes are used for installing hydraulic motors onto self propelled farm machinery, earth moving machines, marine machines and horse walking applications.

The reduced outspeed is 200 rpm therefore the working speed of the hydraulic motors is to be adjusted accordingly, provided that the input speed does not exceed 3000 rpm.

Gearboxes are made of aluminum and cast iron construction with very high mechanical resistance.

Gears

Manufactured in compliance with ISO/DIN 3990-80 standards. Made in steel UNI, involute gears are shaved and case hardened.

Shafts

Case hardened made in steel and key-coupled with gears.

Torques

Torques mentioned in our technical charts for speed reduction gearboxes refer to continuous duty cycles.

Torques under intermittent duty cycles can be increased by 20%

Lubrication

SAE 90 gear oil must be put in the speed reduction gearbox prior to use- please note we do not supply the gear oil and will not accept responsibility for customers not doing putting oil in.

Change the oil after the first 100 hours and then every 12 months or 1500 hours which ever falls first.

Maintenance

Please check the oil level via the special oil window every 50 hours. Working temperatures should not exceed 120 degrees celcius under continuous duty cycle.

Specify the correct speed reduction gearbox.

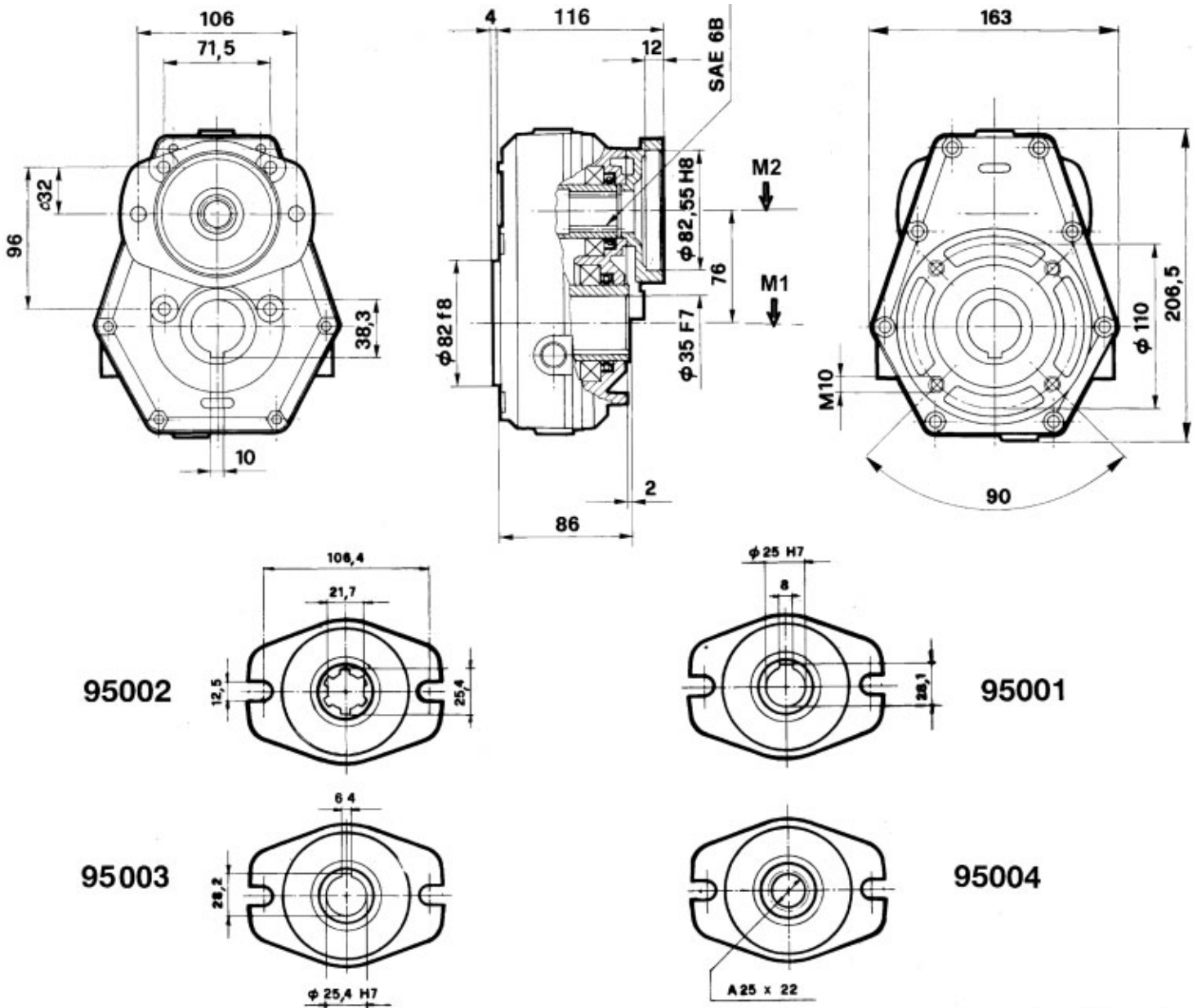
Please check with the Technical Sales Office if you are not sure which speed reduction gearbox to use.



95000 SERIES ALUMINIUM SPEED REDUCTION GEARBOXES



GROUP 2 • SAE 'A' • 10KW



MAX OIL LEVEL 0.22 LITRE

M1 MAXIMUM CONTINUOUS TORQUE OF THE SPEED INCREASER (Input side daNm)	M2 MAXIMUM TORQUE OF THE SPEED INCREASER (Output side daNm)	N1 OUTPUT SPEED AFTER REDUCTION RPM	N2 INPUT SPEED BEFORE REDUCTION RPM	I RATIO OF SPEED REDUCTION ON N2 = N1	MAX TRANSMITTABLE POWER KW	WEIGHT KG
19,6	13,1	200	300	1,5	10	5
17,6	8,8	200	400	2	10	5
19,2	7,7	200	500	2,5	10	5
20,1	6,7	200	600	3	10	5
21,4	6,3	200	700	3,5	10	5
18,6	4,9	200	760	3,8	10	5

FACTORY PREFIX
38

SPEED REDUCTION GEARBOX
95001
95002
95003
95004

RATIO AVAILABLE
1,5
2
2,5
3
3,5
3,8

95001 SPEED REDUCTION GEARBOX



PART NO.	DESCRIPTION OF REDUCTION GEARBOX
38 - 95001-1	Reduction gear gr.2 SAE A dia.25 R.1:1,5
38 - 95001-2	Reduction gear gr.2 SAE A dia.25 R.1:2
38 - 95001-2/30	Reduction gear gr.2 SAE A dia.25 R.1:2 female through-shaft
38 - 95001-3	Reduction gear gr.2 SAE A dia.25 R.1:2,5
38 - 95001-4	Reduction gear gr.2 SAE A dia.25 R.1:3
38 - 95001-4/1	Reduction gear gr.2 SAE A dia.25 R.1:3 female through-shaft
38 - 95001-5	Reduction gear gr.2 SAE A dia.25 R.1:3,5
38 - 95001-5/1	Reduction gear gr.2 SAE A dia.25 R.1:3,5 female through-shaft
38 - 95001-5/2	Reduction gear gr.2 SAE A dia.25 R.1:3,5 female through-shaft
38 - 95001-6	Reduction gear gr.2 SAE A dia.25 R.1:3,8
38 - 95001-6/3	Reduction gear gr.2 SAE A dia.25 R.1:3,8 female through-shaft

95002 SPEED REDUCTION GEARBOX



PART NO.	DESCRIPTION OF REDUCTION GEARBOX
38 - 95002-1	Reduction gear gr.2 SAE A-SAE 6B R.1:1,5
38 - 95002-2	Reduction gear gr.2 SAE A-SAE 6B R.1:2
38 - 95002-3	Reduction gear gr.2 SAE A-SAE 6B R.1:2,5
38 - 95002-3/1	Reduction gear gr.2 SAE A-SAE 6B R.1:2,5 female through-shaft
38 - 95002-3/2	Reduction gear gr.2 SAE A-SAE 6B R.1:2,5 female through-shaft
38 - 95002-3/3	Reduction gear gr.2 SAE A-SAE 6B R.1:2,5 female through-shaft
38 - 95002-4	Reduction gear gr.2 SAE A-SAE 6B R.1:3
38 - 95002-4/1	Reduction gear gr.2 SAE A-SAE 6B R.1:3 female through-shaft
38 - 95002-4/30	Reduction gear gr.2 SAE A-SAE 6B R.1:3 female through-shaft
38 - 95002-5	Reduction gear gr.2 SAE A-SAE 6B R.1:3,5
38 - 95002-6	Reduction gear gr.2 SAE A-SAE 6B R.1:3,8

95003 SPEED REDUCTION GEARBOX



PART NO.	DESCRIPTION OF REDUCTION GEARBOX
38 - 95003-1	Reduction gear gr.2 SAE A dia.25,4 R.1:1,5
38 - 95003-2	Reduction gear gr.2 SAE A dia.25,4 R.1:2
38 - 95003-3	Reduction gear gr.2 SAE A dia.25,4 R.1:2,5
38 - 95003-4	Reduction gear gr.2 SAE A dia.25,4 R.1:3
38 - 95003-5	Reduction gear gr.2 SAE A dia.25,4 R.1:3,5
38 - 95003-6	Reduction gear gr.2 SAE A dia.25,4 R.1:3,8

95004 SPEED REDUCTION GEARBOX



PART NO.	DESCRIPTION OF REDUCTION GEARBOX
38 - 95004-1	Reduction gear gr.2 SAE A 25X22 R.1:1,5
38 - 95004-2	Reduction gear gr.2 SAE A 25X22 R.1:2
38 - 95004-3	Reduction gear gr.2 SAE A 25X22 R.1:2,5
38 - 95004-4	Reduction gear gr.2 SAE A 25X22 R.1:3
38 - 95004-5	Reduction gear gr.2 SAE A 25X22 R.1:3,5
38 - 95004-6	Reduction gear gr.2 SAE A 25X22 R.1:3,8

FACTORY PREFIX
39

SPEED REDUCTION GEARBOX
96001
96002
96004
96005

RATIO AVAILABLE
1,5
2
2,5
3
3,5
3,8

96001 SPEED REDUCTION GEARBOX



PART NO.	DESCRIPTION OF REDUCTION GEARBOX
39 - 96001-1	Reduction gear gr.3 SAE A dia.25 R.1:1,5
39 - 96001-2	Reduction gear gr.3 SAE A dia.25 R.1:2
39 - 96001-3	Reduction gear gr.3 SAE A dia.25 R.1:2,5
39 - 96001-4	Reduction gear gr.3 SAE A dia.25 R.1:3
39 - 96001-4/32P	Reduction gear gr.3 SAE A dia.32 R.1:3 female through-shaft
39 - 96001-5	Reduction gear gr.3 SAE A dia.25 R.1:3,5
39 - 96001-6	Reduction gear gr.3 SAE A dia.25 R.1:3,8
39 - 96001-6/1	Reduction gear gr.3 SAE A dia.25 R.1:3,8 female through-shaft
39 - 96001-6/27	Reduction gear gr.3 SAE A dia.25 R.1:3,8 female through-shaft

96002 SPEED REDUCTION GEARBOX



PART NO.	DESCRIPTION OF REDUCTION GEARBOX
39 - 96002-1	Reduction gear gr.3 SAE A-SAE 6B R.1:1,5
39 - 96002-2	Reduction gear gr.3 SAE A-SAE 6B R.1:2
39 - 96002-3	Reduction gear gr.3 SAE A-SAE 6B R.1:2,5
39 - 96002-4	Reduction gear gr.3 SAE A-SAE 6B R.1:3
39 - 96002-5	Reduction gear gr.3 SAE A-SAE 6B R.1:3,5
39 - 96002-6	Reduction gear gr.3 SAE A-SAE 6B R.1:3,8

96003 SPEED REDUCTION GEARBOX



PART NO.	DESCRIPTION OF REDUCTION GEARBOX
39 - 96003-1	Reduction gear gr.3 SAE A dia.25,4 R.1:1,5
39 - 96003-2	Reduction gear gr.3 SAE A dia.25,4 R.1:2
39 - 96003-3	Reduction gear gr.3 SAE A dia.25,4 R.1:2,5
39 - 96003-4	Reduction gear gr.3 SAE A dia.25,4 R.1:3
39 - 96003-5	Reduction gear gr.3 SAE A dia.25,4 R.1:3,5
39 - 96003-6	Reduction gear gr.3 SAE A dia.25,4 R.1:3,8

96004 SPEED REDUCTION GEARBOX



PART NO.	DESCRIPTION OF REDUCTION GEARBOX
39 - 96004-1	Reduction gear gr.3 SAE A 35X31 R.1:1,5
39 - 96004-2	Reduction gear gr.3 SAE A 35X31 R.1:2
39 - 96004-3	Reduction gear gr.3 SAE A 35X31 R.1:2,5
39 - 96004-4	Reduction gear gr.3 SAE A 35X31 R.1:3
39 - 96004-5	Reduction gear gr.3 SAE A 35X31 R.1:3,5
39 - 96004-6	Reduction gear gr.3 SAE A 35X31 R.1:3,8

96005 SPEED REDUCTION GEARBOX

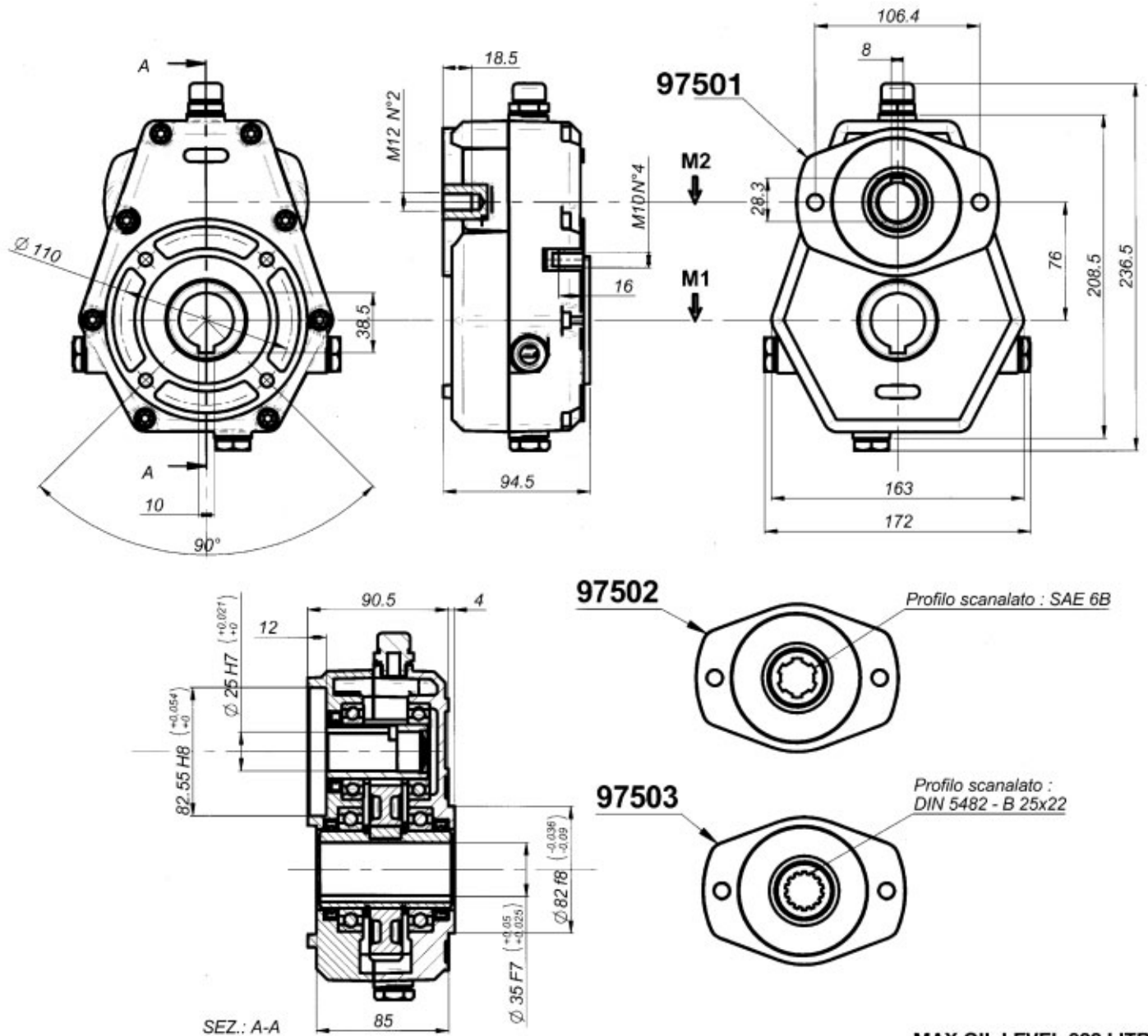


PART NO.	DESCRIPTION OF REDUCTION GEARBOX
39 - 96005-1	Reduction gear gr.3 SAE B 35X31 R.1:1,5
39 - 96005-2	Reduction gear gr.3 SAE B 35X31 R.1:2
39 - 96005-3	Reduction gear gr.3 SAE B 35X31 R.1:2,5
39 - 96005-4	Reduction gear gr.3 SAE B 35X31 R.1:3
39 - 96005-5	Reduction gear gr.3 SAE B 35X31 R.1:3,5
39 - 96005-6	Reduction gear gr.3 SAE B 35X31 R.1:3,8

97500 SERIES CAST IRON SPEED REDUCTION GEARBOXES

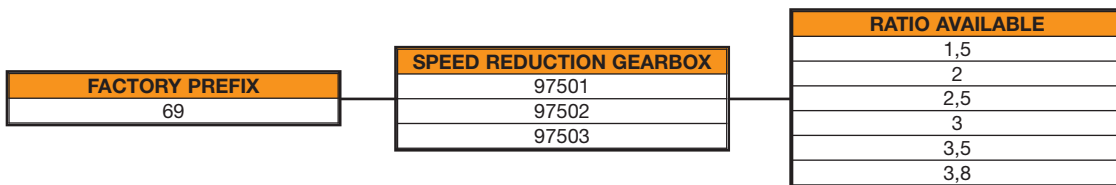


GROUP 2 • SAE 'A' • 18KW



MAX OIL LEVEL 022 LITRE

M1 MAXIMUM CONTINUOUS TORQUE OF THE SPEED INCREASER (Input side daNm)	M2 MAXIMUM TORQUE OF THE SPEED INCREASER (Output side daNm)	N1 OUTPUT SPEED AFTER REDUCTION RPM	N2 INPUT SPEED BEFORE REDUCTION RPM	I RATIO OF SPEED REDUCTION ON N2 = N1	MAX TRANSMITTABLE POWER KW	WEIGHT KG
24,7	16,5	200	300	1,5	18	10
32,4	16,2	200	400	2	18	10
38,7	15,5	200	500	2,5	18	10
24,0	8,0	200	600	3	18	10
25,5	7,5	200	680	3,5	18	10
26,6	7,0	200	760	3,8	18	10



97501 SPEED REDUCTION GEARBOX



PART NO.	DESCRIPTION OF REDUCTION GEARBOX
69 - 97501-1	Reduction gear gr.2 cast iron SAE A R.1:1,5
69 - 97501-3	Reduction gear gr.2 cast iron SAE A R.1:2,5
69 - 97501-4	Reduction gear gr.2 cast iron SAE A R.1:3

97502 SPEED REDUCTION GEARBOX



PART NO.	DESCRIPTION OF REDUCTION GEARBOX
69 - 97502-1	Reduction gear gr.2 cast iron SAE A-6B R.1:1,5
69 - 97502-2	Reduction gear gr.2 cast iron SAE A-6B R.1:2
69 - 97502-3	Reduction gear gr.2 cast iron SAE A-6B R.1:2,5
69 - 97502-4	Reduction gear gr.2 cast iron SAE A-6B R.1:3
69 - 97502-4/1	Reduction gear gr.2 cast iron SAE A-6B R.1:3 female through shaft
69 - 97502-5	Reduction gear gr.2 cast iron SAE A-6B R.1:3,5
69 - 97502-6	Reduction gear gr.2 cast iron SAE A-6B R.1:3,8

97503 SPEED REDUCTION GEARBOX

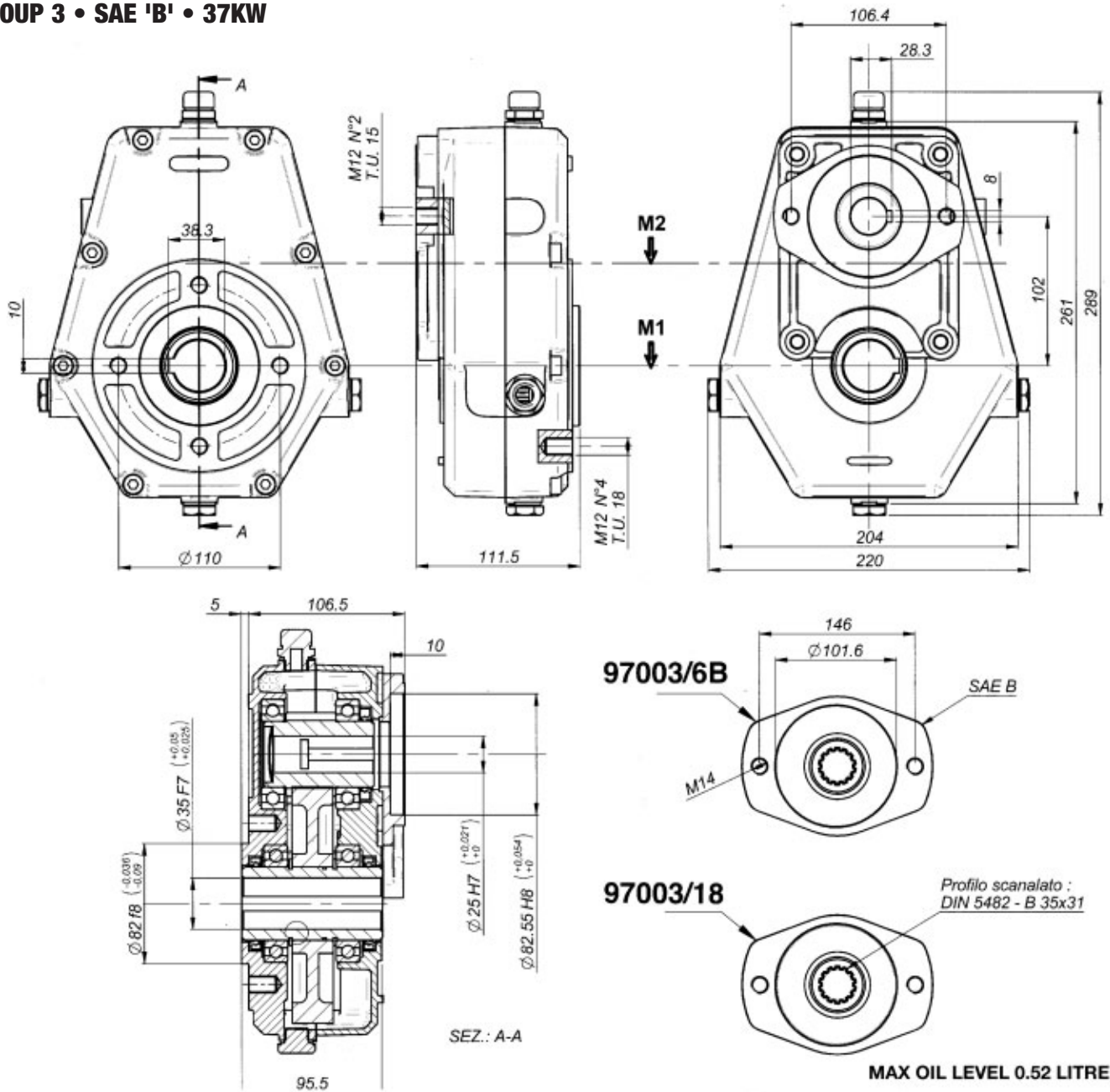


PART NO.	DESCRIPTION OF REDUCTION GEARBOX
69 - 97503-1	Reduction gear gr.2 cast iron SAE A T14 R.1:1,5
69 - 97503-2	Reduction gear gr.2 cast iron SAE A T14 R.1:2
69 - 97503-3	Reduction gear gr.2 cast iron SAE A T14 R.1:2,5
69 - 97503-4	Reduction gear gr.2 cast iron SAE A T14 R.1:3
69 - 97503-5	Reduction gear gr.2 cast iron SAE A T14 R.1:3,5
69 - 97503-6	Reduction gear gr.2 cast iron SAE A T14 R.1:3,8

97003 CAST IRON SPEED REDUCTION GEARBOX



GROUP 3 • SAE 'B' • 37KW



M1 MAXIMUM CONTINUOUS TORQUE OF THE SPEED INCREASER (Input side daNm)	M2 MAXIMUM TORQUE OF THE SPEED INCREASER (Output side daNm)	N1 OUTPUT SPEED AFTER REDUCTION RPM	N2 INPUT SPEED BEFORE REDUCTION RPM	I RATIO OF SPEED REDUCTION ON N2 = N1	MAX TRANSMITTABLE POWER KW	WEIGHT KG
66	66	540	540	1	37	14.5
66	44	540	810	1.5	37	14.5
66	33	540	1080	2	37	14.5
66	26.4	540	1408	2.5	37	14.5
66	22	540	1620	3	37	14.5
66	18	540	1836	3.5	35	14.5
66	16.6	540	2057	3.8	35	14.5

FACTORY PREFIX
40

SPEED REDUCTION GEARBOX
97003/18
97003/6B

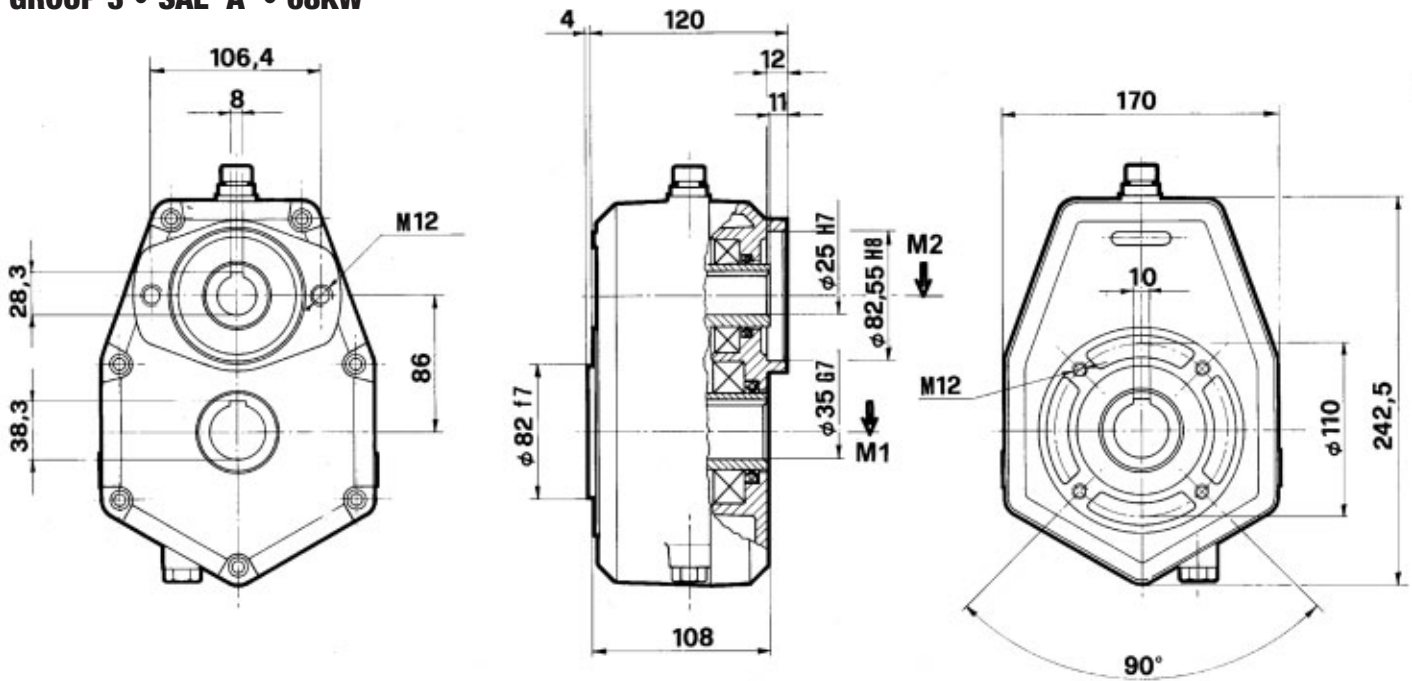
RATIO AVAILABLE
1
1,5
2
2,5
3
3,5
3,8

PART NO.	DESCRIPTION OF REDUCTION GEARBOX
40-97003/6B	CAST IRON SPEED REDUCTION GEARBOX
40-97003/18	CAST IRON SPEED REDUCTION GEARBOX

97001 CAST IRON SPEED REDUCTION GEARBOX



GROUP 3 • SAE 'A' • 68KW



MAX OIL LEVEL 0.30 LITRE

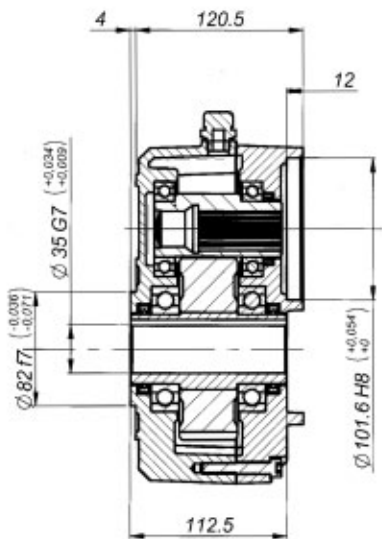
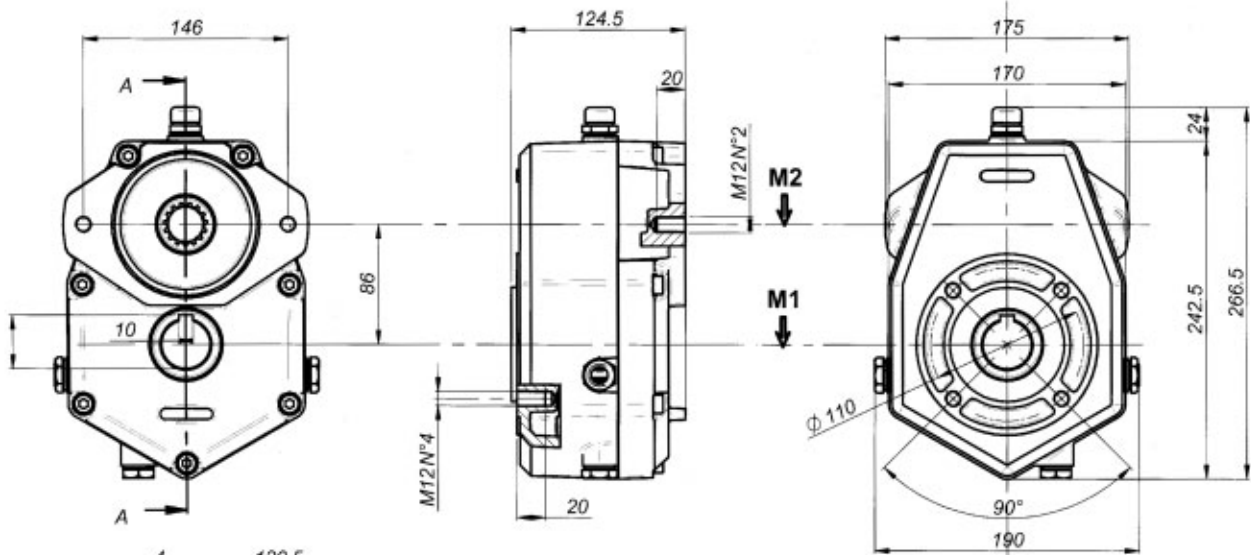
M1 MAXIMUM CONTINUOUS TORQUE OF THE SPEED INCREASER (Input side daNm)	M2 MAXIMUM TORQUE OF THE SPEED INCREASER (Output side daNm)	N1 OUTPUT SPEED AFTER REDUCTION RPM	N2 INPUT SPEED BEFORE REDUCTION RPM	I RATIO OF SPEED REDUCTION ON N2 = N1	MAX TRANSMITTABLE POWER KW	WEIGHT KG
58	58	200	200	1	68	16
82.5	55	200	300	1.5	68	16
98	49	200	400	2	68	16
112.5	45	200	500	2.5	68	16
132	44	200	600	3	68	16
122.5	35	200	680	3.5	68	16
110.2	29	200	760	3.8	68	16



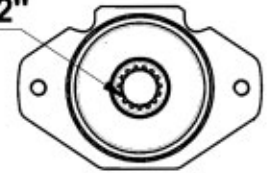
PART NO.	DESCRIPTION OF REDUCTION GEARBOX
97001/13	CAST IRON SPEED REDUCTION GEARBOX
97001/15	CAST IRON SPEED REDUCTION GEARBOX

97001/13 – 97001/15 CAST IRON SPEED REDUCTION GEARBOX FLOWFIT

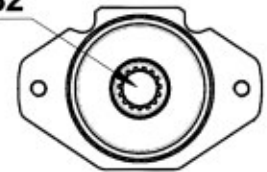
GROUP 3 • SAE 'B' • 68KW



97001/13
Profilo : Z 13 SAE 16/32"



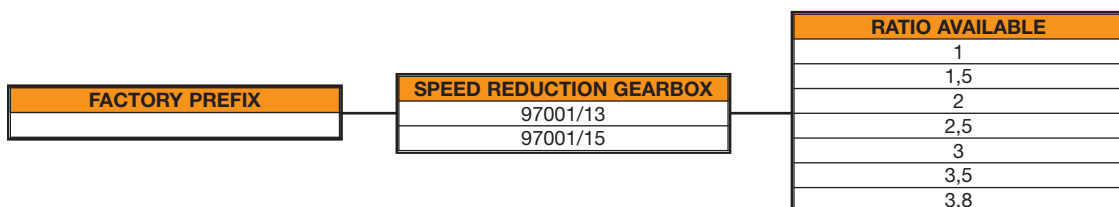
97001/15
Profilo : Z 15 SAE 16/32"



SEZ.: A-A

MAX OIL LEVEL 0.3 LITRE

M1 MAXIMUM CONTINUOUS TORQUE OF THE SPEED INCREASER (Input side daNm)	M2 MAXIMUM TORQUE OF THE SPEED INCREASER (Output side daNm)	N1 OUTPUT SPEED AFTER REDUCTION RPM	N2 INPUT SPEED BEFORE REDUCTION RPM	I RATIO OF SPEED REDUCTION ON N2 = N1	MAX TRANSMITTABLE POWER KW	WEIGHT KG
58	58	200	200	1	68	16
82.5	55	200	300	1.5	68	16
98	49	200	400	2	68	16
112.5	45	200	500	2.5	68	16
132	44	200	600	3	68	16
122.5	35	200	680	3.5	68	16
110.2	29	200	760	3.8	68	16



PART NO.	DESCRIPTION OF REDUCTION GEARBOX
97001/13	CAST IRON SPEED REDUCTION GEARBOX
97001/15	CAST IRON SPEED REDUCTION GEARBOX